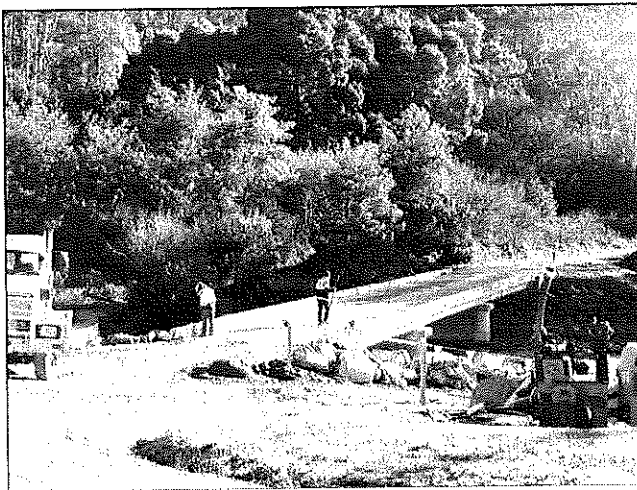


THE VALLEY AND EAST COAST VOICE INC.

Established 1968

50.05 June 29, 2017

Deadline for 50.06 is 5pm July 10, 2017



New bridge at Upper Scamander,
photo by Dale Matheson of Scamander



Rocks viewed from Sloop Rock Cove jetty,
photo by Toni Smith

Hub4Health Walking Group p10

John Graham Cameron of St Helens was awarded an Order of Australia on June 12, 2017

Graham was awarded Break O'Day Council Citizen of the Year 2016 for his contribution to our community, as well as his work with Legacy and the local RSL Branch.

Graham was employed by Break O'Day Council until 2010, when he retired.

Graham was a well-respected employee of Council, as well as a well-respected community member.

Whilst in the employ of Council, Graham updated our cemetery records – the hours of work that

he put into this project was phenomenal.

The work he has done in relation to the Honour Roll for all Tasmanians who fought in World War I and II at the Memorial Park located in St Helens is a credit to his researching expertise.

Graham is to be commended for the work that he has done in allowing those people are interested in tracking down information about their

relatives who fought for Australia to see their names in honour.



Photo by Jayne Richardson,
courtesy of the Examiner

24 hour fuel now available in St Marys!

See p11 for details

Editor: Wendy Dawson
wdawson@valleyvoice.com.au
0403 430 452

website: valleyvoice.com.au
facebook.com/ValleyEastCoastVoice
POB 230 St Marys Tasmania 7215
For all account queries please contact

Advertising rates 2017

Business card size	½ page ads \$40
ads \$15	Full page ads \$65
Intermediate ads \$18	Permanent classified ads
¼ page ads \$25	\$20 p.a.

Valley and East Coast Voice Inc. Advertising rates for all community groups

Regular articles i.e. news of current activities / events and general information will, at the discretion of the Editor, be carried free of charge.

Any community group requiring a full page will be charged 50% of the commercial rate, after proof of eligibility.

The decision regarding whether or not an article attracts advertising fees is the Editor's. Groups will be advised of any cost before going to print.

Private community announcements / private classifieds are free for two issues.

Annual posted subscriptions are \$69 and annual online subscriptions are \$20.

Articles for publication may be left at the St Marys Pharmacy, posted or emailed.

We do not accept responsibility for the accuracy of information provided by contributors.

Visit our website valleyvoice.com.au and look back over ten years of archival content, galleries and stories, in addition to each new issue. Leave a comment / suggestion on what you would like to see included.

24h Emergency services numbers

Abuse & Assault Services	1800 737 732
Ambulance, Fire & Police	000
Crime stoppers	1800 333 000
Digital mobile Phone emergency service	112
Poisons Information	13 1126
SES Flood & storm emergencies	13 2500
TasNetworks	13 2004
TasWater	13 6992

The Valley and East Coast Voice Inc. Guidelines

Opinions in any letters published are not necessarily those of the Editor and committee, or volunteer staff.

Our pages remain open to fair and honest criticism so that on all questions both sides may be presented, but any submissions containing personal attacks / libel / slander will not be accepted.

Kindly do not attack the editor, the paper or the authors of previous articles.

All articles for submission must bear the author's name, town of residence, address and phone number. The address and phone number will not be published but are for verification purposes only.

Letter writers will be given the chance to respond over a suitable period of time. Subjects may be closed at the editor's discretion. Please make sure of your facts. Do not write submissions just to let off steam. Articles most commonly published are those relating to current community issues.

Keep articles short, simple and to the point. Letters are restricted to 300 words or fewer.

The editor reserves the right to edit any submission for grammar, spelling or reduction in size where necessary.

All letters/emails must include your full name, address and contact phone number.

The Valley and East Coast Voice Inc. reserves the right at all times, without notice, to update, change or amend our guidelines.

All information is correct at time of printing.

Whilst we value and welcome community input, the Valley and East Coast Voice Inc. does not provide specific feedback regarding any decision made not to publish a submission.

For Sale

I may be old and feeble, but I'm still selling moo poo.
Norm 6372 2380

Large round hay bales, not rain effected. \$55.
Alan 0407 944 158

Meals on Wheels 0488 384 344

June 29	Judy Duckett
30	Drew Adam
July 3	Karl Balzer
4	Lundy Vosper
5	Valmai Spencer
6	Heather Griffiths
7	Drew Adam
10	Ruth Aulich
11	Karl Balzer
12	Louise Keady

Community Notices

Rossarden Progress Association:
Annual General Meeting with a General Meeting to follow is Monday August 14, 2017
3pm at the Fire Station.
All welcome
Mary Knowles, Secretary, Gipps Creek. 6385 2002

GET meeting dates for 2017
August 14 AGM, October 9, November 24 and December 4. 7pm at the Fingal Valley Neighbourhood House **Mary Knowles 6385 2002**
gippscreek@skymesh.com.au

ROSSARDEN Fire training and BBQ dates are: July 1, August 5, September 2, October 7, November 4 and December 2.
Fire Brigade training is 10am prior to each BBQ.
Mike Prewer, Rossarden. 6385 2184

Greater Esk Tourism **Annual General Meeting** will be August 14, followed by a General Meeting. 7pm at the Fingal Valley Neighbourhood House, Fingal
Mary Knowles, Gipps Creek

The next AVOCA Market will be in the Hall on September 9. Thank you to everyone who has supported the market. Mary Knowles, Gipps Creek.

Wanted to rent in St Helens area:
lock up garage space for small car.
Contact Derek 03) 6357 2271 / 0423 778 414



Dart Calcutta
WINNER TAKES ALL
Union Hotel, Avoca
Friday July 14 at 7pm
Competition entry \$5
RSVP to Helen on 6484 2101 by July 12

Letter to the Editor

Dear Editor

Reon and I read with regret that the St Marys Lions Club has taken its final curtain call. On behalf of both of us and I am sure we speak for all who have been the recipients of all their good work. We say thank you, to the many members who have made a sizeable contribution to this worthwhile organisation.

You will be missed!

Wendy Brennan, St Marys

Fingal Valley Neighbourhood House Inc.

Talbot St Fingal
6374 2344 / admin@fvnh.org.au



Facebook We have a new Facebook page which is our main communication tool for what is happening at the FVNH. Like our page to keep up to date.

<https://www.facebook.com/fingalvalleyneighbourhoodhouse/>

Play Centre is now operating on Mondays from 9.30am to 2.30pm. We are still taking enrolments for 2017.

Eating with Friends Christmas in July Luncheon is on Friday July 28. Cost: \$10 p/p. Time: 12 noon for 12.30 pm. Book before Friday July 21 to avoid disappointment.

Morning Tea is now on every Wednesday morning at 10am. Come in and have a cuppa, snack and chat, or if you wish bring a plate to share.

Nils With support of Aurora Energy and State Government, Nils will offer subsidies and loans for the purchase of selected energy efficient items. Be quick as funds are limited. Contact the Office for more information or book for an appointment with our trained staff.

Some Up and Coming Events Spring Bride Saturday September 16 at FVNH. Blooming Tasmania Flower and Garden Festival Saturday September 23, Launceston. Bloomin' Tulips Festival Day Saturday October 14, Wynyard. Tasmanian Craft Fair Saturday November 4, Deloraine. These are a few of many trips being organised.

School Holiday Activities Information will be out soon.

Op Shop has moved into the library. Call in and have a look at the new space and pick up a bargain.

Library This is now in the FVNH.

Contact us or call into the Office 9am - 3pm Monday to Friday for more information.
The Fingal Valley Neighbourhood House Inc. is funded by the Crown through the Department of Health and Human Services



gone rustic studio + gallery
OPEN 10-4, TUES - SAT
eco fashions, art quilts, fibre + textile
jewellery, handmade gifts + cards etc.
COMING SOON - BAGDAD QUILTING
SUPPLIES WITH JUDY DUCKETT
0417027424 - 37 main street st marys tas 7215

The Say, by Cagerattler

By chance I came across an interesting article the other day about the mineral and resources wealth of our country. It referred to the massive resources at our disposal - gold, bauxite, ore, aluminium, coal, natural gas and several more minerals that Australia has in abundance. It's in the tens of trillions of dollars.

In natural gas alone we have vast amounts. We far outstrip both the USA and the Russian Federation in such things and most if not all of these other commodities.

Two questions arise for me on this though. The first one is why are we not demanding more for these resources, or at least far better outcomes for these so called wonderful Free Trade Agreements with trading partners that seem to come out better off than us.

This makes me angry. We are strong and powerful enough to demand better outcomes, because in lots of ways they need us more than we need them.

This brings me to a second point. Why do we keep giving up on downstream processing of our own resources?

Over the past 20 -30 years you'd be gobsmacked most likely if you knew how many manufacturing industries we've lost. The steel industry, building resources, textiles, food and lots more. Not only that, but the bulk of existing manufacturing companies are actually overseas owned. This is ridiculous, and various governments of all persuasions should hang their heads in shame for allowing this to happen.

Why don't we demand better? One day when our resources (being sold off for not too much in return) are gone, we will be left out in the cold.

Foreign ownership laws and much tougher demands for value added deals with FTAs are of paramount importance, given the massive wealth this country has.

There is no logical reason why future governments can't look at encouraging using our own skills in re-introducing manufacturing at a good level, and campaigning for Australians to look first at buying Australian owned and made items.

I'd rather see a slight reduction on GST for locally made to help consumers consider such things, and government assistance packages to help existing Australian companies improve infrastructure if a good enough business case shows that this will increase productivity.

For a country with such incredible resources we can and should look after our own backyard a whole lot better than presently.

What do you think?

Rodney McGiveron, St Marys

Hilly's IGA St Marys

Open 7 days a week



'think Hilly's, think convenience'

Pizzas made wholly in house,
ready to cook.

Large range of salads
made fresh in-store.

Succulent BBQ Chickens
cooked to perfection.

Cookies fried chicken

and hot chips available 7 days.



Hilly's IGA St Marys and St Helens

'we stand for fresh'

Labor commits \$1m to back St Helens Mountain Bike tourism

Rebecca White MP Labor Leader

16 June 2017

A Labor Government would spend \$1m in Government to back premier mountain biking tourism in St Helens.

Labor Leader Rebecca White said this commitment would establish a coastal mountain biking experience mirroring the Derby success at the St Helens MTB Track Network, focused on the recreational mountain biking market, including families.

"The vision is to eventually establish mountain biking network in Tasmania the equal to any in the world," Ms White said.

"We want to draw visitors to the East Coast from overseas, interstate and from other parts of Tasmania."

She said a Labor Government would work in tandem with the Tourism Industry Council Tasmania to deliver a regional infrastructure program to protect and preserve the state's reputation as a premier international tourist destination.

"By 2020, our state will be in a position to welcome 1.5m visitors and we need to ensure our key attractions are ready for that inevitability," Ms White said.

"It is also important that there are attraction in places like St Helens to ensure that tourists who visit Tasmania spend their money outside major population centres.

"The growth in tourism numbers will place incredible pressure on our existing and ageing tourism infrastructure but only Labor is working with the industry to plan for the future.

"These initiatives will deliver new jobs for regional Tasmania in places like St Helens and ensure our state stays ahead of the game in a very competitive global tourism market."

More information: Luke Edmunds 0499 990 232



Expressions of interest for the volunteer position of editor of the Valley and East Coast Voice Inc. are invited. Full details provided in response to genuine enquiries.

Contact W Dawson on 0403 430 452 wdawson@valleyvoice.com.au

Out of the Woodwork

The Guild is open everyday except Friday, Saturday and Sunday (depending on volunteers) and other times by appointment

Facebook.com/pages/Break-oday-Woodcraft-Guild-Mens-Shed

Firstly, the committee have asked me to send a tribute to the St Marys Lions

club for all their valuable work and contribution over the years for our community.

Many thanks to Chris Ogden who braved the chilly weather and was an enormous help to Reon and I at the St Marys Car Show in selling our haute cuisine chilli and frankfurts, not to forget Andrew Atherton our trusty chemist for allowing us to set up shop on his back lawn area.

Our humble stall was given much recognition when we were visited and allowed to photograph Christine (a colonial stroller) in her beautiful hand-made Victorian attire!

Finally, many thanks to all who questioned me about the absence of Out of the Woodwork in the last Valley Voice. I was too exhausted to put hand to keys after our busy but enjoyable day. It was nice to be missed!

Photos by Wendy Brennan and Chandra Schwenn

Wendy Brennan, Secretary, St Marys



Christine in all her beautiful finery



Chris, Wendy and Reon

Road closures Mathinna Area JULY 8

The Third Round of the Tasmanian Rally Series will be conducted in the Mathinna area on July 8, with permission from Forestry Tasmania and Tasmania Police

The following roads will be closed from 7am to 7pm:

- Tower Hill
- Tower Road
- Cox Road
- Malahide Road (top end)

Saddleback

- Eton Road
- Coombes Road
- Rayner Road
- Harrow Link

Weise Road

- Upper Esk
- Cokers Road
- Tylers Road



For further information, please contact
rallies@500carclub.com.au or phone Graham
on 0438 728 910

"NOTICE OF CLOSURE"

TASMANIA POLICE

CLOSURE OF PUBLIC STREETS

BREAK O'DAY COUNCIL

ORDER UNDER SECTION 56A OF THE VEHICLE AND TRAFFIC ACT 1999

in exercise of the powers conferred upon me under the provisions of Section 56A of the Vehicle and Traffic Act 1999, I hereby order that the following public streets within the Break O'Day Municipality be closed on the following days and between the times:-

Saturday 8th July 2017 8.30am to 7.00pm

Description of the Roads to be Closed

Eton Road	Weisse Road
Coombes Road	Tylers Road
Griffen Road	Cokers Road
Rayner Road	Tower Hill Road
Harrow Link	Cox Road

for the purpose of facilitating traffic control for the event of the Motor Sports Club of Tasmania 2017 LWR Mountain Stages Rally.

Inspector WILLIAMS

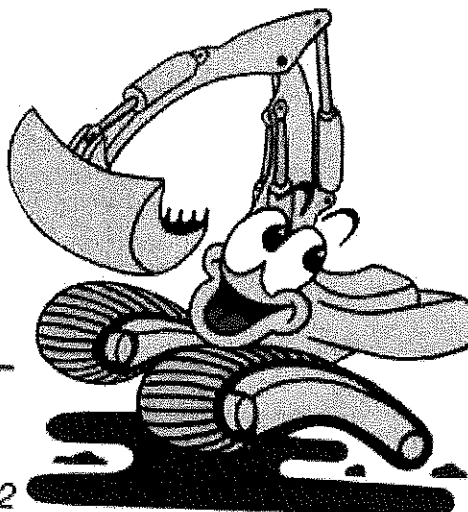
Dated this 26 day of June 2017

C & D EXCAVATIONS

For all your earthmoving requirements

- Road gravel.
- Top soil, screened topsoil.
- Sand and rocks.
- On sight screener 20mm -75mm.
- 20 tonne excavators with tilt bucket, ripper, rock and log grabber and quick hitch.
- D65 Komatsu dozer with ripper and tilt blade.
- 10 yard tipper.
- Compaction roller.
- Wheel loader.

Dams, roads, firebreaks,
land clearing, house sites,
drainage, bridge construction
and much, much more ...



LOCAL OWNER/OPERATOR WITH
OVER 25 YEARS EXPERIENCE

Call Dana or Craig: 6372 2033/0439 722 032

Feed The Dragon

Open 7Days - 11am to 8:30pm

- 1 Satay Prawns with Mixed Veggies \$15
- 2 Oyster Prawns with Mixed Veggies \$15
- 3 Garlic Prawns \$15
- 4 Prawn with Eggs \$15
- 5 Sizzling beef with Veggies \$13
- 6 Black Bean Beef with Veggies \$13
- 7 Oyster Beef with Mixed Veggies \$13
- 8 Satay Lamb with Veg \$13
- 9 Lamb with Veg in Oyster sauce \$13
- 10 Sweet and Sour Pork \$15
- 11 Pork sliced with Veggies \$13
- 12 Pickle Veggies with choice of Meat \$13
- 13 Cashew Nut Chicken \$13
- 14 Satay Chicken with Veggies \$13
- 15 Lemon Chicken \$15
- 16 Garlic Mixed Vegetables \$12
- 17 Home Style Tofu \$15
- 18 Mapo hot Tofu \$13
- 19 Chef special Chicken \$13
- 20 Yun Ton Noodles \$10
- 21 Special Cucumber \$12 Chili Sour Potato strip \$12
- Stir Fry Noodles OR Special Fried Rice \$8
- Meat Spring Roll OR Vegetarian Spring Roll \$1.50

Dumpling \$1.20 Steam Rice \$3 OR a combination from bain marie \$10 OR a Banquet (minimum four persons) for \$20 including 2 Spring Rolls, 2 Dumplings, a Main Dish and Dessert to follow.

**Jun 0411 186 573 or
Feng 0401 189 749**



'The Great War in Broad Outlines'

is a pictorial display sponsored by the Belgian Government, promoting public awareness of Australia's involvement in Belgium during the 1st World War.

This display can only be seen at two venues in Tasmania - Hobart and St Helens.

The St Helens Veterans' Information and Support Centre will be hosting this display in the **Portland Hall** from

- Monday July 3 to Friday July 21
- Monday to Friday 10am - 3pm and
- Saturdays 10am to 2pm.
- Free entry. Open to the general public
- School groups welcomed

Minister Guy Barnett has been invited to open the display on July 3

Any enquiries phone Graham Cameron on 6376 2324 (Thursdays) or Gary Graham on 6372 5727



St Marys Sports Centre Inc.

Presents

**Christmas in July on
Saturday July 22, 2017
commencing 5.30pm**

Cost \$25 per adult, \$15 per child,
maximum \$75 per family

Includes 2 course Christmas meal
Specialty prizes for children
Lucky door and lucky seat prizes
A visit from Santa and much more!

Limited seating available

For bookings (by Saturday 15)
please contact

Jacqui on 0439 978 156 or
Tamatha on 0427 332 085

prospectus
stage

St Helens/St Marys
Community Bank® Project

Share Offer Extended.

Don't miss out, buy your shares now. For as little as \$200 or as much as \$30,000 you can own shares in our community company.

Prospectus available from:

**Break O'Day Council Office
Bendigo Bank agency, Cecilia Street
Gone Rustic, St Marys**

For further information, please contact:

Andrew MacGregor 0419 894 072

Roger Harlow 0417 684 463

1 **pledge**

2 **feasibility**

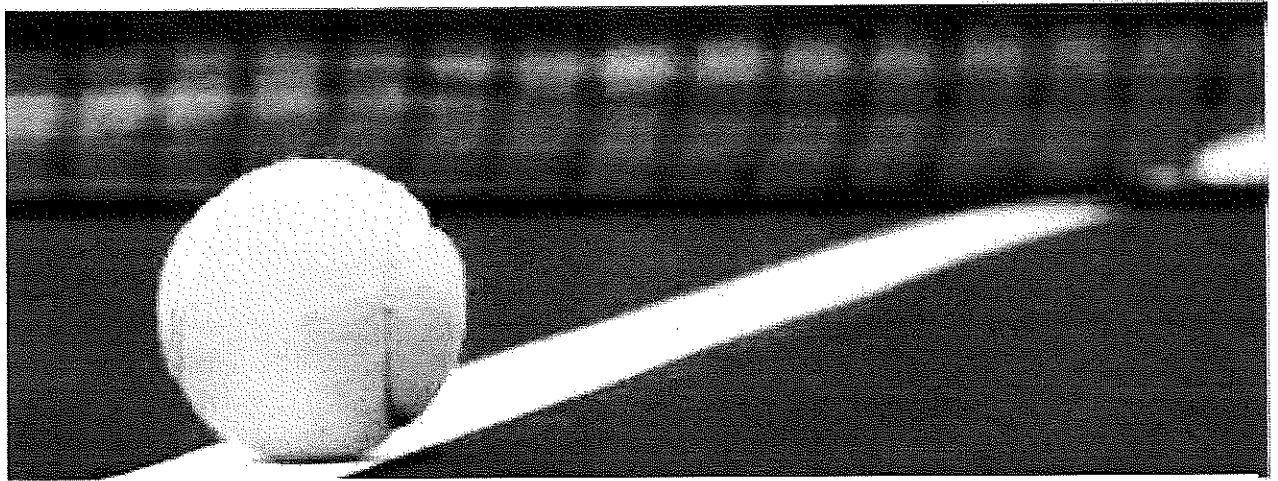
3 **prospectus**

 **Bendigo Bank**
Bigger than a bank.

Bendigo and Adelaide Bank Limited ABN 11 068 049 178
AFSL/Australian Credit Licence 237879. (A241700) (05/17)

bendigobank.com.au



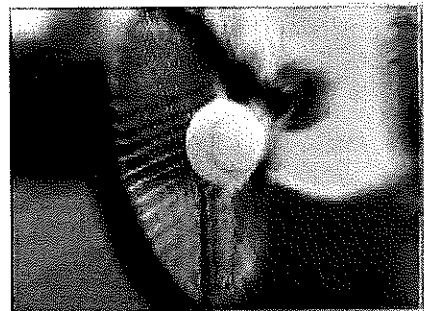


Ladies Tennis St Marys

JOIN OUR ROSTER

**ROSTER STARTS ON THE 26TH JULY
FINISHES 6TH DEC**

When: Wednesday's
Where: St Marys Tennis Club
Time: 9:30am to 1:30pm



Let us know if you would like to join our roster
or be on our fill in list.

*Tennis racquets supplied if needed
Child friendly*

ALL SKILL LEVELS WELCOME
(Beginner to Experienced)

For more information:

Trudy Barnes - 6372 5716
Karon Brown - 0419 722 390
Or find us on Facebook:

[https://www.facebook.com/
ladiestennisstmarys/](https://www.facebook.com/ladiestennisstmarys/)



Facebook page: <https://www.facebook.com/ladiestennisstmarys/>

facebook

Hub4Health Walking Group

Taylor's Beach to Sloop Rock via Sloop Rock Jetty Cove - Leader Brian Elliott

It was a beautiful sunny day. Nine people turned up at the car park at Taylors beach. We walked along the beach to the south end and took a track through the bush and intersected with the old tramway track. We walked around to where the old jetty was once, and Revel gave us a little bit of information about its history. From there we took a rough track south connecting to the Sloop Point track near the car park. We rested for a while out on the end of Sloop Point - what a beautiful view!

We returned along Sloop Point Road, cutting through to the tramway track crossing Gardens Road to where the tram would have changed direction heading north. We walked back down Gardens Road to the car park.
Contributor: Brian Elliott

Fingal Rivulet Walk May 21 - Leader Bryan Edhouse

See photo at right.

Airport to Jocks Lagoon - Leader Alex Buchanan
A group of 14 gathered at the Airport car park on a bright sunny day with a slight NW breeze, making it an ideal opportunity to enjoy the wonderful bushland surrounding St Helens and George's Bay.

The walking was easy on white sandy tracks with a stream crossing and mirror image pools encountered. The wildflowers had started to flower - brilliant golden wattles were abundant - birds could be heard and seen throughout the walk. We reached an elevated plateau where the vista was stunning; St Helens Island in the background and coastal lagoons easily seen in the foreground.



Fingal Town Weir photo by Toni Smith



On the track - mirror image photo by Wayne Fulford

New members are most welcome.
Please call Hub4Health:6376 2971 or
Bryan Edhouse:0414 987 435.

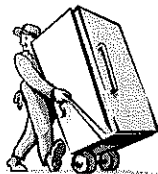
Come join up soon!

Wayne Fulford, Publicity Officer, H4H Walking Group

Ransley's Appliance Service

POB 136 Scamander Tasmania 7215

*Washing machine noisy?
Refrigerator runs too long?
Clothes dryer blows cold air?*

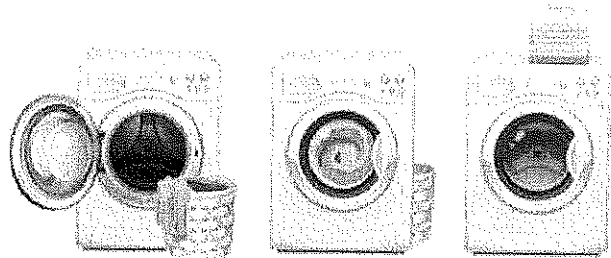


then you need the services of our technicians
6372 5307 / 0428 761 811

The group broke into two; the smaller staying on the plateau with the larger group walking down and along a lagoon's foreshore; meeting up together some 15 minutes later near the rock monument. After a comfortable walk skirting the runway, we arrived back at the cars reinvigorated.
Contributor Wayne Fulford

CLEAN CRACK LAUNDROMAT

32 Main Street St Marys



**Coin operated washers
and dryers
6.30am - 8pm**

24 hour fuel now available in St Marys!

Unleaded, Premium 95 unleaded and Diesel is now available from all five pumps 24 hours a day 7 days a week from Caltex St Marys, using the outside POS (point of sale) terminal.

Most fuel transactions will now need to be carried out using the POS terminal.

Driveway service and cash transactions are still available.

CUSTOMERS WITH EXISTING 30 DAY ACCOUNTS PLEASE NOTE:
in the interests of greater efficiency and lower fuel prices through reduced administration costs, almost all credit facilities will be phased out at the end of June 2017.

Procedures for using the POS terminal:

(NOTE! Pumps will not operate until card has been inserted and processed!)

Read instructions on screen;

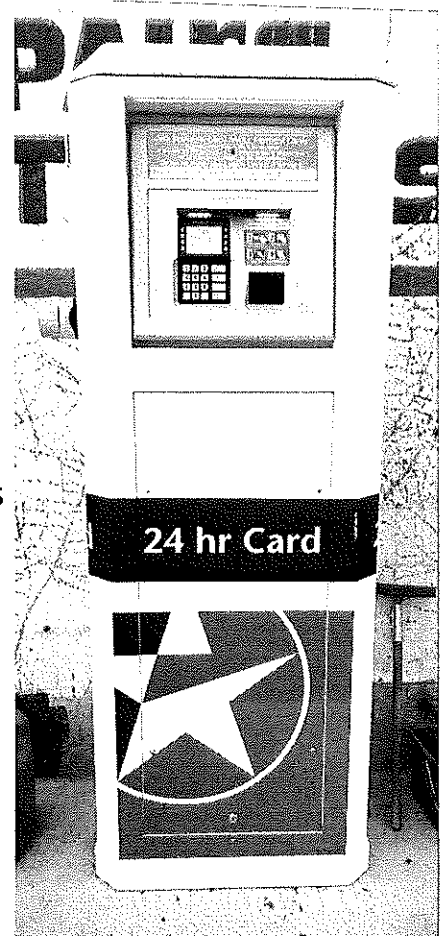
1. Insert card with chip facing up and towards terminal or paywave tap, do not remove card until requested
2. Select pump number and enter, pumps are numbered 1 to 5 starting from closest to building
3. Select credit, savings or cheque
4. Select preset amount or key in amount and enter
5. If using credit, select cancel or accept
6. Enter PIN, wait for authorization

Of course, staff are available to assist.

Note! If pre selected amount option is used, pump will most likely stop before amount is reached, this is a safety measure to eliminate the risk of going over preset amount and maybe overdrawing an account. If you would like an exact amount simply key in any amount greater and stop when desired amount is reached.

Pump can also be stopped at any time before preset amount is reached, but remember: **WHAT IS ON THE PUMP IS WHAT YOU PAY FOR!** regardless of amount selected.

For technical help, call 1800 633 566



Over the years

2007 * 2007 * 2007 * 2007 * 2007 * 2007 * 2007



Jeff Morris and his Skippy



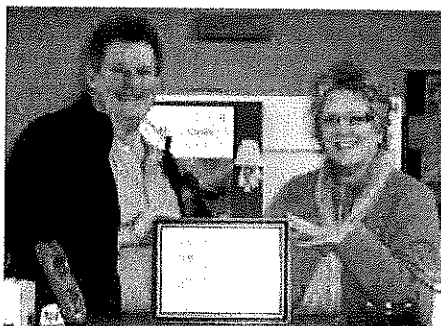
Young fellow riding his Clydesdale down the main street, as you do.



Hannah Rubenach, Grand Champion of the Great St Marys Bakeoff



Karen Wedge and David Belman open Second Hand Rose



Harry and Kerry Veldum's Certificate of Excellence, for their efforts towards the St Marys and surrounding communities during the 2006 fires



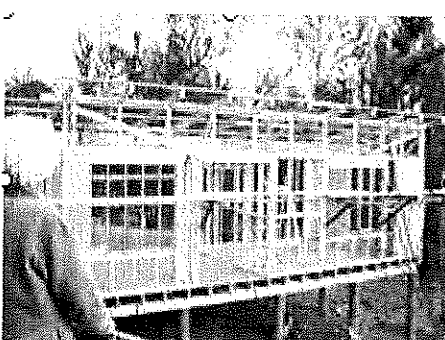
Martin Hornibrook and his blue barn full of old goods



Fingal Council Chambers



Old Seamander Hotel



Betty Sumner admiring her new out-building after the 2006 fires destroyed her garden and sheds

Wind might be the final curtain for Todds Hall

By Peter Thompson

SEVEN YEARS after the fire that destroyed the iconic St Marys landmark building, the Todds Hall, a fire might be the final curtain for the building.

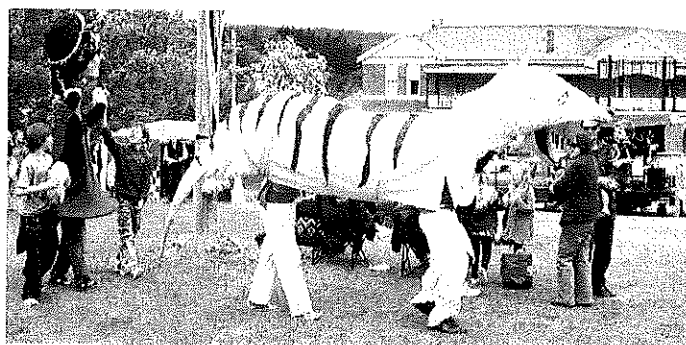
A fire in a shed had been lit in the building, after reports of a fire in the shed. The fire spread to the main building, which was destroyed. The fire was caused by a gas cylinder that had been used for the fire. The fire was caused by a gas cylinder that had been used for the fire.

The fire killed by Marys and the wider fire in the building. The fire was caused by a gas cylinder that had been used for the fire. The fire was caused by a gas cylinder that had been used for the fire.



WIND DAMAGE Const. Simon Triffitt at St Marys, showing damage to the building.

As diverse as the Association of Chamber of Commerce and Commerce, the building was destroyed. The fire was caused by a gas cylinder that had been used for the fire. The fire was caused by a gas cylinder that had been used for the fire.



Maypole Day organised by Grassy Bottom Regional Arts

Page 5.

3 May, 1968.

VALLEY VOICE ADS

WANTED TO BUY

WANTED TO SELL

HELP USE FILL THESE SPACES

ANDREWS

Health

Salts

79c

65c

AT: ST. MARYS PHARMACY

FINGAL GARAGE, SERVICE STATION
AND TAXI

Phone 15 (Pat. Cowie, Prop).

Depot for all brands of B.P.

Petrol and Oils.

4

E.B.L. DAWSON PTY. LTD.

SUPER MARKET

St. Marys Phones 27 & 41

OUR GOOD SERVICE GROCERY
DEPARTMENT ESTABLISHED 66 YEARS
SPECIALISED SERVICE
FOR YOU.

COME AND INSPECT OUR NEW AND
EXCITING RANGE OF WINTER

CLOTHING

WONDERFUL VALUE IN OUR
HARDWARE DEPT.

THE IVY LEAF CAFE

FOR GRILLS, FISH & CHIPS,

HAMBURGERS PIES AND PASTIES

CHICKO ROLLS MILK SHAKES

SWEETS CIGARETTES

RICK COWIE

GENERAL CONTRACTOR

CONTRACTOR

Phone

Fingal

15

DON'T FORGET THE WALK-A-THON

SUNDAY 5TH MAY

BE AT PARISH HALL AT 1.00 p.m.

SENSIBLE SHOES PLEASE!!!

Mt Elephant and Beyond Book Group June review

The Book Group read *The Finkler Question* by Howard Jacobson last month. It won the Man Booker prize in 2010 and is an intriguing exploration of what it is to be Jewish in the modern UK. Howard Jacobson is one of the leading British Jewish voices of today. The novel, which is darkly funny and full of irony centres on three male characters: Julian Treslove, Sam Finkler and Libor Sevcik. Julian is the character from whose point of view the story is told. He is a bland, 49 year old, disconnected man who makes his living (significantly) as a look-alike, attending events and paid to impersonate celebrities like Brad Pitt. He indulges in melancholic operatic fantasies of death and loss and envies Sam, a successful Jewish pop psychologist and the much older Czech Jew, Libor, once their history teacher more than 30 years ago, who later became a well known showbiz journalist.

One night after dining with Sam and Libor, both recently widowed, Julian is mugged and believes that his attacker mistakenly thought he was Jewish. From here on Julian becomes obsessed with "becoming" Jewish and the rest of the novel is concerned with the question of what it is to be Jewish in modern day Britain. Julian is seeking an identity rather than a religion, a culture which he idealises and longs to be a part of. The comedy of the satire comes from the contradictions and confusions of this man's mind as he seeks to make himself into someone always just beyond his grasp.

In this search the author explores the varieties of Jewishness. Sam Finkler has always taken his culture for granted and in fact he rejects it by joining the so-called ASHamed Jews, a group who are protesting the behaviour of Israel against Palestine. To continue the irony, his wife, Tyler, had converted from Catholicism and made a point of studying Hebrew and the teachings of the faith, raising her children as Jews. Libor is a worldly Jew who loves Englishness and shops at Fortnam and Masons yet maintains his connection with his Jewish culture. Julian falls in love with Libor's niece, Hepzibah, and sees this relationship as another way into becoming "truly" Jewish.

In order not to use the potentially loaded word "Jew" Julian privately begins to use Sam's name, "Finkler" when thinking about the subject and this adds to the ridiculousness of his mission. The story begins lightly as we get to know this self obsessed and unlikeable character but becomes progressively darker as it is revealed that there is a dark underbelly of anti-semitism still at work today in British society.

Some readers had difficulty finishing the novel but all agreed that it was a challenging but rewarding read. If you are a fan of Woody Allen you will recognise the obsessive, self questioning character of Julian Treslove, and Julian wasn't even Jewish which adds to the humour. None of the characters is really likeable but they are well drawn. We had an excellent discussion about the book. This often happens with a

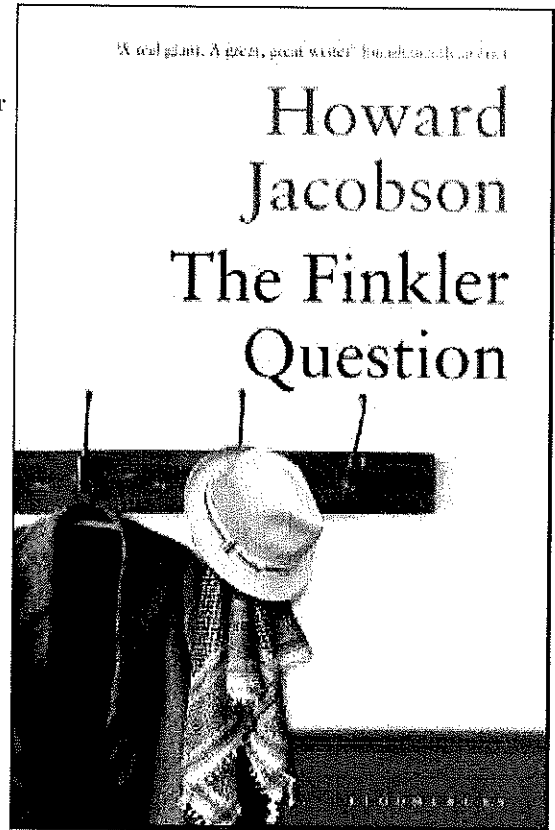
book that the members might not have chosen to read privately. Sometimes we need to get out of our comfort zone!

Pam Bretz, St Marys

Avoca Spring Festival

Sunday September 3

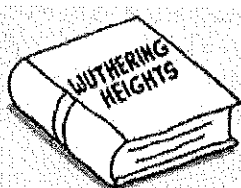
Details out soon



abridged classics



Everyone is sad.
It snows.



A sort-of brother
and sister fall in
love. It's foggy.

Jeanette Helen Milne



For anyone who trained as either a Registered or Enrolled Nurse at The Launceston General Hospital or St. Vincent's (and there are a few of us in the Break O Day) the name of Jeanette Helen Milne is well known. But did you know she is buried in the General Cemetery at St Helens?

Miss Milne came to Tasmania from Scotland in 1886 to become Lady Superintendent of Nursing at the Launceston Public Hospital. During her tenure at the LGH (as it is now known) she established a School of Nursing which existed from 1890 until 1990.

In 1912 she went to St Margaret's Private Hospital (now St Vincent's Campus of Calvary Health Care) as Lady Superintendent of Nursing, where she continued until retiring to St Helens in 1922.

She clearly played an active part in Launceston society despite her professional responsibilities and was a season ticket holder for the Tasmanian Exhibition held in Launceston in 1891-92, and the reason the Albert Hall was built.

During my summer cemetery rambles, in the company of another LGH Ex Trainee as it happens, we chanced upon her grave and took some photographs of its rather sorry state after removing a few weeds.

The photographs were posted on the Ex Trainee's Facebook page and within hours there was a spirited conversation about remediation of her grave.

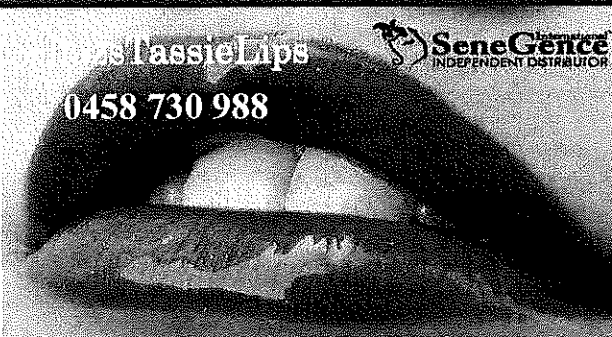
The suggestion went to a meeting of the Ex Trainees Association and also to the LGH Historical Society and it was agreed that the work be undertaken and the costs met by these two organisations. The job is done and it is a massive improvement, as well as telling an important story in the social history of Tasmania.

The suggestion went to a meeting of the Ex Trainees Association and also to the LGH Historical Society and it was agreed that the work be undertaken and the costs met by these two organisations. The job is done and it is a massive improvement, as well as telling an important story in the social history of Tasmania.

Photographs and article by Wendy Fowler, B.A., B.A.HONS. (UTas), M. Pub. History (Monash)



Lipstick that STAYS on!



Shaz Tassie Lips
0458 730 988

Senegence
INDEPENDENT DISTRIBUTOR

YES LADIES, IT'S TRUE! A REVOLUTIONARY HIGH QUALITY LIPSTICK THAT IS:

- KISS-PROOF
- WATER-PROOF
- SMUDGE-PROOF
- BLEED-PROOF
- WAX FREE
- LEAD FREE
- NOT TESTED ON ANIMALS

Over 70 colours to choose from!

FIRST TIME USERS:
PURCHASE A STARTER SET FOR \$74
Colour, Glossy Gloss & Oops! Remover
INDIVIDUAL COLOURS \$34 EACH
GLOSSES \$26 EACH

www.senegence.com/ShazTassieLips
Facebook: ShazTassieLips

REAL CLASSIFIEDS

Illiterate? Write today for free help.

Auto Repair Service. Free pick-up and delivery. Try us once, you'll never go anywhere again.

Our experienced Mom will care for your child. Fenced yard, meals, and smacks included.

Dog for sale: eats anything and is fond of children.

Man wanted to work in dynamite factory. Must be willing to travel.

Stock up and save. Limit: one.


Semi-Annual after-Christmas Sale.

3-year old teacher needed for pre-school.

Experience preferred.

by Kevin Faulkner

**LIONS CLUB
OF ST. MARYS**
MEMBERSHIP



**Charter Night
Programme**

at St. Marys Community Hall
SATURDAY, FEBRUARY 22, 1968.

[illegible]

16



Where do you find us?

5 Portland Court, St Helens, 7216

Phone: 6376 2971

Email: admin@hub4health.org.au

Web: www.hub4health.org.au

Our Aim: To deliver health and wellbeing programs to rural and remote communities within the Break O'Day Municipality.

BIG changes afoot!

I'm sure, readers, that you will be aware the government funding that previously allowed us to provide subsidised health services throughout Break O'Day and beyond, ceased a couple of months ago. However Hub4Health is facing these new challenges with a positive outlook. From July 1, some services will no longer be offered by Hub4Health; we are trying to maintain services but they will have to be self-funded. In some cases that means we are asking you the user to pay a fee for service. This is so that we can continue to provide YOU with the services that YOU need.

Building Blocks is proudly supported by Hub4Health and continues to offer a full week of free services throughout the region, working as a mobile early childhood and parenting support program.

Ochre Health continues to provide the GP clinics out of Portland Court and Hub4Health is working in conjunction with the Royal Flying Doctors Service (RFDS) and Break O'Day Council to continue to provide the services of a personal trainer, a Rural Outreach Worker and a Mental Health Outreach Worker. These are all free services, with referrals being made directly to RFDS, focusing on chronic health conditions.

Counselling services are provided by Leanne McMurtrie and the Board and Management are actively seeking

funding to allow us to continue to provide this service. Our dietician services will be offered less frequently and will be booked on a fee for service model. The very popular gym programs will continue, in the St Marys Community Gym, where there are now over 170 members, and we are looking at options for establishing a St Helens Community Gym. A small annual membership is being considered - this would assist Hub4Health in covering the costs of running the gym and some of the facilitated classes.

So, you can see, whilst there are **BIG** changes afoot, the Board and Management are striving to continue to facilitate and host many allied and GP health services in the area. We know that we have YOUR support and we shall continue to actively pursue funding, and fund-raising will be a large part of our future.

Janet Drummond - Acting Chair (Hub4Health Board)



Current Services Available at Hub4Health

Ochre Health Medical	(03) 6376 2971
Foot Ankle Rehabilitation Clinic	(03) 6327 1920
Australian Hearing	(03) 6332 4700
Launceston Dietetics	0417 325 129
Tess Crawley & Associates	(03) 6331 0577
Toe Nail Clinic	(03) 6376 2971
St Marys Active4Life Gym	(03) 6376 2971
Counselling & Consulting Services Tasmania	0419 175 948
FriendSHIP Program	(03) 6376 2971
Rural Flying Doctors Service	
Rural Health Worker	0439 799 958
Physical Health Worker	0447 036 888
Mental Health Worker	0439 503 202



~ Rita

<https://www.facebook.com/humansoflaunceston/posts/385195755215253>

"When I was a young girl, I had a partner and had been engaged to him for two years. My fiancé was a very controlling and mean man. I was desperately unhappy but felt like I could not get away from him.

I was working in an office after I left school and a colleague of mine introduced me to Ken at a party. We started chatting and I can honestly say that for the first time in my life, I felt butterflies in my stomach and I

just knew he was the man for me.

He was a rough and ready type of fellow and a very honest man. Not to mention, he was very good looking in a rock and roll star kind of a way. So I ended my engagement. I still have a photo of my ex fiancé but I cut him out of it (laughs) because I liked the photo of me. Let me show it to you. It always makes me laugh. That's what us girls have to do when a bloke isn't nice to them. Cut them out. (laughs)

So, after a little while, Ken and I were going steady and we were both very happy and in love from the start".

"I think Ken is off having a stroll around the place, but he should be back soon. I have a better memory than Ken. We both live together in this aged care home and it's great that we are together. Anyway, Sheffield in Eng-

land is where I was born, in July of 1936. So I'm 80 years of age. I was an only child. My father was a painter and decorator and my mother worked at the swimming baths as a lifeguard, but the strange thing was, she couldn't swim. (Laughs) That's very funny.

Ken and I loved to go dancing. We danced all the time and we were amongst the first in the scene when rock and roll came along and the dresses and dancing became a major part of our lives. We were very good at dancing

and loved the new age of music that was coming through. I still love listening to music and it still fills my soul and makes me smile.

After a few years together, in November 1958, Ken and I were married in Sheffield. It was a lovely day. I also became a Jehovah's Witness in 1959 and I have lived by their teachings since then.

Ken was a coal miner for quite a few years and got a job mining up in Derbyshire.

We had a son Stephen and six years later we had Louise, our daughter. Then Ken was asked to come and open an open cut gold mine here in the Pilbara. Right at the top of W.A. Ken had already come here when I came later. I refused to fly on a plane so we spent 4 weeks sailing here. Stephen was 10 when we moved to Australia and Louise was only four.

We lived in the Pilbara for three years. It was a nice contrast



With some of my girlfriends



My wedding day in Sheffield



*Ken and I on the day of
Stephen's christening*

from Britain. Very hot weather but we adjusted and the kids also got used to it.

Then Ken got a job working underground in Rosebery on the west coast of Tasmania.

We lived there for 11 years. We had some good times, but the weather was just awful.

Such a contrast from W.A.

Rain 8-9 months of the year.

It was not ideal for the kids but we stayed there and made the most of it. No use in whinging I always said.

In 1980, Ken had a bad accident underground. He was driving the solo train cart and someone had left some-

thing on the rail tracks, and when he hit it, the train cart stopped immediately and Ken kept going and he hit the wall very hard. It injured him terribly and he had severe spinal issues.

We saw the best spinal specialist in Tasmania, Bernie Eioder and he performed major surgery on Ken. He managed to get Ken almost back to normal and Ken was able to walk again and was much happier obviously. It lasted for over 30 years.

We moved to Longford after that, for a few years. Nice little place Longford. Then we moved to Tompsons Lane in Newnham where we lived for the next 30 years.

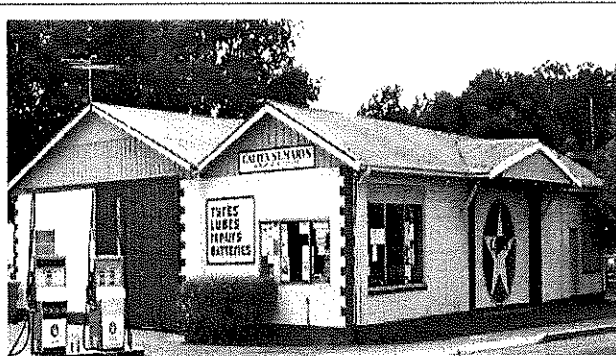
As I mentioned before, Ken's spine is now in a very bad way due to the effects of ageing, and eventually his spine just disintegrated, undoing all of the surgery. Ken can still walk now but is much slower and uses a walking frame.

Our son Stephen now lives in Burnie and Louise lives here in Launceston and works in a food supply business delivering food to facilities like this one. They are great kids.

Tasmania has been very good to us. Why would you live anywhere else really"?



*Our beautiful babies
Stephen and Louise*



CALTEX ST MARYS

**MECHANICAL REPAIRS
& SERVICE**

41 Main Street

6372 2335 / 0419 503 109

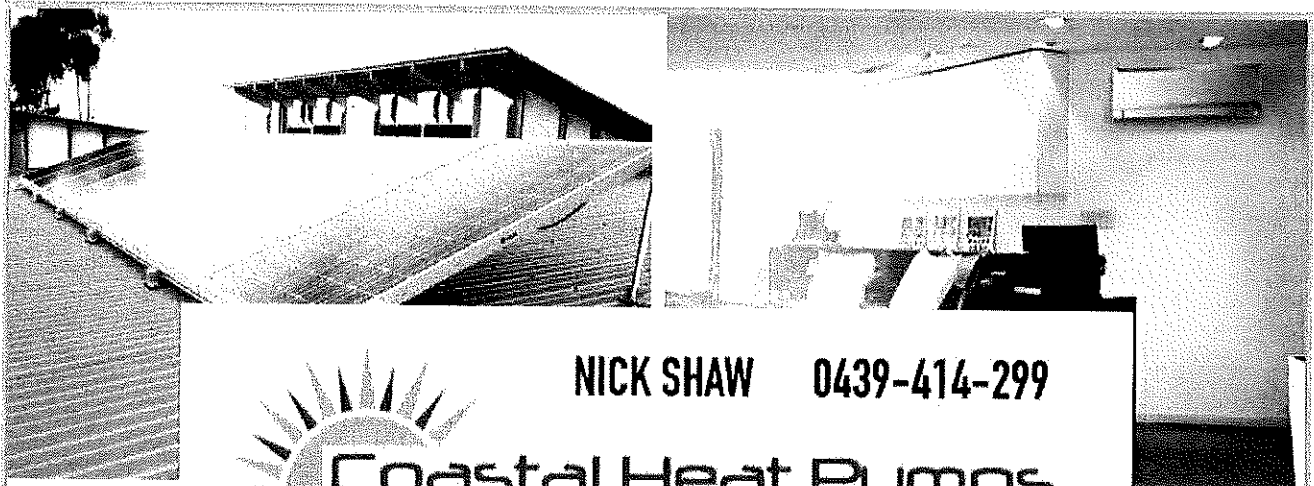
Fax 6372 2822


East Coast Vet Clinic

**Dr Jeff Parsons regularly visits
the Fingal Valley
for all your veterinary needs.**



*For appointments, please call the
St Helens clinic on 6376 1577*





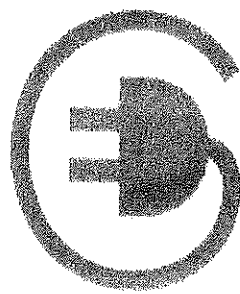
NICK SHAW 0439-414-299

**Coastal Heat Pumps
& Solar**

Lic no. L076081
Lic no. A4155228

Specialising in both Domestic and Commercial projects
Tax deductible for business
Tier 1 supplier, for the best quality solar systems
1 kW - 100 kW systems available
Call us today for a FREE SOLAR QUOTE
Already have a quote?
WE'LL BEAT IT BY 5 %

Install one of our leading brands of
Heat Pumps today and stay WARM this WINTER
while still staying COOL in SUMMER.
-Floor mounted-
-Wall mounted-
-Fully Ducted systems
-up to 18kW



St. Helens Electrical

Domestic, Commercial, Industrial
New houses, wiring and repairs
Underground mains supply

Lighting Specialist
Interior and Exterior
Advice, sales, and installation

Heat Pump/Heater Installations
Supply and install all brands
Floor, Wall, Ducted
Advice on all home heating

Solar Installation
Domestic and business
1kW to 100kW


Call for a free quote

Rod Shaw 0407-615-072

Nick Shaw 0439-414-299

24798 Tasman Highway
St. Helens, Tas. 7216

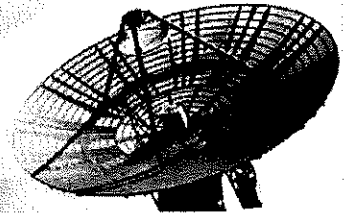
Email:
sth.electrical@gmail.com



**Coastal Heat Pumps
& Solar**

Electrical Contractors
Servicing the East Coast from Pyengana down Coles Bay
and through the Fingal Valley
Lic: 933671

365
tomorrows



Teaching a Frog Calculus

by **Matthieu C. R. Cartron** June 16, 2017

It was after several hours, and, several brief outbursts, that Henry came to a most significant conclusion: A frog simply cannot learn calculus.

Henry was a very smart nine-year-old. So smart, in fact, that he was already taking college courses. Henry was a well-rounded student, but of all his unusual abilities, his most remarkable aptitude was in the subject of mathematics. Numbers, as he had once told his mother, just simply made sense to him.

But math, as Henry soon found out, was not a favourite subject of most creatures. Including frogs.

There was a small creek near Henry's house where they would congregate and cavort at the edge of the water, and, with some difficulty, Henry had managed to capture one with a plastic container.

Henry loved learning, and was always eager to impart his own knowledge onto others. His peers at the elementary school were bored by his interests and annoyed by his attempts to enlighten them. But, would frogs, which people might label as incognizant and stupid, be more willing to learn? Henry had decided to give it a shot.

He had dragged an easel out into the backyard and had placed the container with the frog only a few feet in front of it. With a pen and a stick broken off from a nearby tree, Henry had begun his introduction and instruction of derivatives - using the paper on the easel as a makeshift drawing board. But the frog, lethargic from his failed attempts to jump from the sealed plastic prison, looked the other way. Henry would notice and would reprimand the inattentive frog for his behaviour, but it was to no avail. Even manually turning the container did little to spark the interest of the indifferent amphibian.

But Henry had an idea. Perhaps this particular frog would be inspired to learn if there were motivated peers around him. Henry needed role models, and to find them, he headed back to the creek where after an hour, he had managed to collect five more frogs.

When Henry's mother saw the six containers and the easel in the backyard, she marched out the back door to the enigmatic scene.

"Henry, what is the meaning of all of this?" she exclaimed.

After Henry relayed his thought process to her, she explained to her son that frogs, and just about every other creature, do not have the mental capacity to understand most of what humans can. It made sense to Henry, and it was what his conscience had surreptitiously concluded after the disappointing results of the first frog.

But what Henry said next to his mother caught her off guard.

"If it is impossible for frogs to understand what we can, then is it possible that we might not understand some things that others can?"

"Well, I . . . I suppose Henry." Henry's mother was unsure if this was in fact true, but Henry was right.

From the fifth dimension, two undefinable beings, known as Aeruleels, had perceived Henry's entire day, and were especially amused by what his mother had said.

"What was it she said? Oh yes, 'what is the meaning of all of this?'"

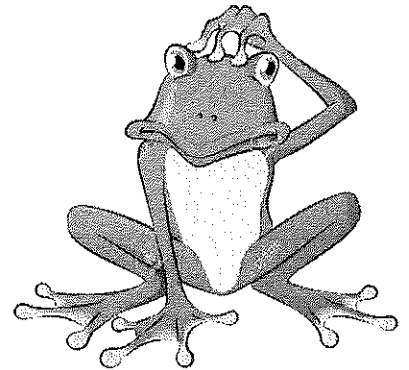
The two Aeruleels crowed with laughter.

"It comes up again and again, the most important question to the human race," one of the Aeruleels said.

"Well," the other Aeruleel said. "We have tried many times to give them the answer, but as we have learned. . ."

The two Aeruleels smiled and then spoke simultaneously.

"Humans simply do not have the mental capacity to understand."



Surf Coast Realty

Suite 1, 158 Scamander Ave.
Scamander Tas 7215

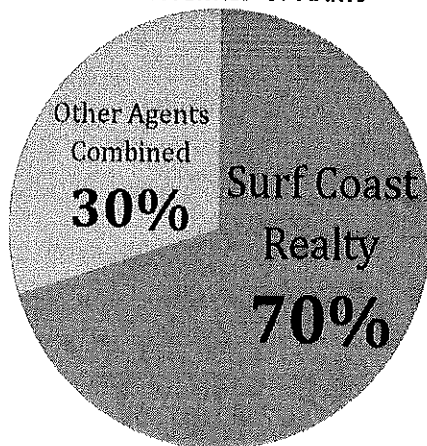
Ph: (03) 6372 5321

enquiries@surfcoastrealty.com.au
www.surfcoastrealty.com.au

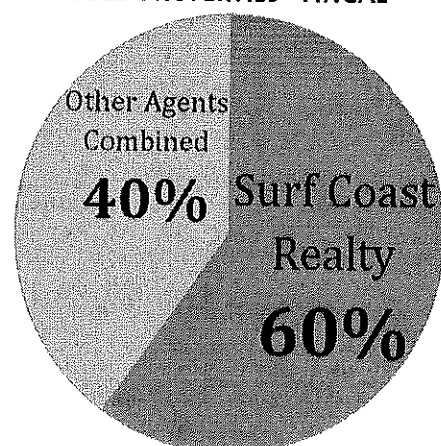
SOLD! SOLD! SOLD!

Surf Coast Realty is achieving some outstanding sales results and are currently looking for NEW listings in the area.

SOLD PROPERTIES - ST MARYS



SOLD PROPERTIES - FINGAL



According to www.realestate.com.au Surf Coast Realty has SOLD 7 of the last 10 properties sold in St Marys, and 6 of the last 10 sold in Fingal.

Below are just a few of our recent sales ...



19 Newman Street
St Marys



21 Main Street
St Marys



537 German Town Rd
St Marys



41 Talbot Street
Fingal



Franks Street
St Marys



282 Elephant Pass
Rd St Marys

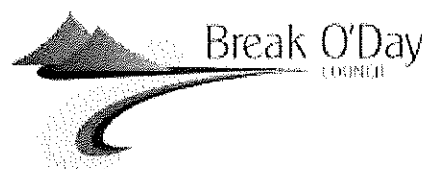


Story Street
St Marys



Irish Town Road
St Marys

Break O'Day Council ensures rate payments are kept affordable for its residents June 26, 2017



With the Valuer General's valuations averaging approximately a 10% increase on residential properties in the municipality, Break O'Day Council has decreased cents in the dollar on the general rates charge to keep repayments affordable. This means that overall rate revenue for the Council will increase by 2% for the financial year. This reflects the focus Council has had on reducing costs in recent years whilst remaining focussed on the targets in its Long Term Financial Plan and ensuring financial sustainability.

This financial year will also see the introduction of kerbside recycling in the municipality which BODC, as promised, has kept to less than a \$1 per week with an annual charge of \$50 per annum. However, as the service is starting half way through the financial year, ratepayers will only be charged \$25 for this year. This low cost was made possible through a focus on reducing waste to landfill and reducing overall costs which has seen the council take back over the management of its waste transfer stations.

"We know that our municipality is one of the most disadvantaged in the state and we see our community struggle everyday with financial hardships. As representatives of our community we need to be responsible and make consideration around our ratepayer's capacity to pay," Mayor Mick Tucker said.

The ongoing environmental sustainability of the municipality is a focus of BODC and the budget identifies almost \$200,000 which has been earmarked for reducing the area's carbon footprint; \$25,000 for solar panel installation on Council assets to reduce electricity consumption and \$166,000 for the replacement of 618 street lights with LED lights.

"We are really happy with this budget as we have prioritised major projects based on need and return to the entire community but have also ensured every township in the municipality receives a piece of the pie so to speak," Mayor Tucker said. "We understand that our ratepayers will hold us accountable for every dollar we spend and we are confident that this budget delivers the most bang for their buck as possible."

Some of the larger spends mentioned in the budget include major projects such as;

Parnella Landslip Mitigation Works - \$1million: This million dollar project has been funded by the State Government's Accelerated Local Government Capital Works Program which allowed Councils to borrow interest free sums over four years. This project aims to mitigate further landslip in Parnella by redirecting stormwater, a contributing factor to erosion in the area. We will be repaying the loan over four years.

St Helens MTB Network- \$250,000: This is a \$3.1 million dollar project that has received \$1 million State Government funding and is currently awaiting on the status of a Federal Government grant valued at \$1.5 million to complete the project. Currently council are working through the approvals process which includes ecological and heritage assessments among others.

St Marys Streetscape - \$500,000 These works will include kerb and gutter, stormwater works, new exposed aggregate footpaths, street furniture and landscaping.

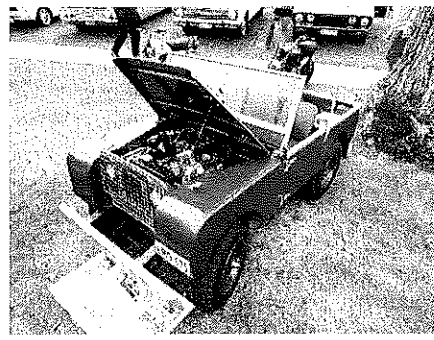
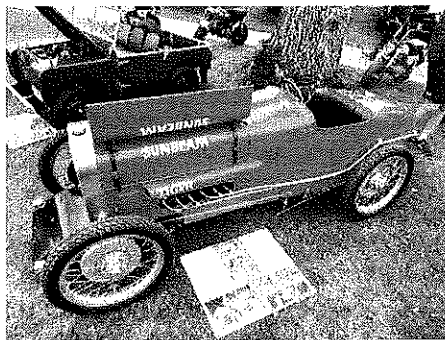
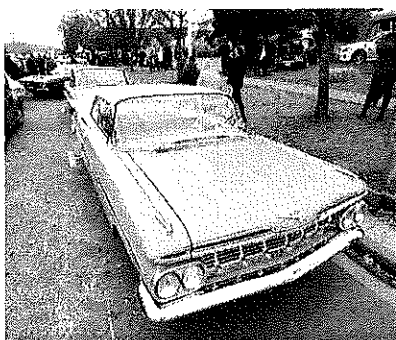
Resheeting - \$408,000 BODC manages 325km of unsealed roads in the municipality which must be maintained to ensure access for residents living in more remote locations.

Resealing program - \$525,000 Council manages 225km of sealed roads in our municipality. Where these funds are spent is determined by Council's Asset Management System which prioritises roads based on condition.

Ratepayers will receive a detailed newsletter outlining Council spend in more detail with their rate notices in July.

2017 St Marys Community Car and Bike Show

Photos by Dale Matheson, Scamander



Do you run a Community Group? Break O'Day Council is currently updating their Community Group contact list. If you are affiliated with a new or existing group and would like to ensure we have the correct details, please contact me at Erica.Lowry@bodc.tas.gov.au. Thank you.

Charity Pest Ignored By His Own Mum At Central Station

That was the nightmare scenario that Marty Wilson, a 23 year old university student faced this week.

WENDELL HUSSEY | Cadet

Imagine being ignored by your own mother. The person who brought you into this world. Imagine her looking at you, pretending like she had never seen you before in her entire life.

That was the nightmare scenario that Marty Wilson, a 23 year old university student faced this week.

Whilst studying an Arts degree at the University of Western Queensland, Marty picked up some casual work over summer spruiking donation plans for an international charity cartel.

And while Marty fully admits "chugging" (charity mugging) isn't the greatest job, and has had some pretty tough encounters, Wilson said that "My

mother coldly stone walling me was about as tough as it gets."

"I know she saw me. She literally looked at me from like 15 metres away and just stared at the ground. I walked up to her and was like "Hey Mum," and she just pretended to be on her phone and kept walking."

Wilson says he walked alongside his mother for about five metres before giving up, and standing on the footpath completely flabbergasted.

"I'm so used to getting brushed by all the "busy people," but Jesus, that was tough" Wilson ex-

claimed.

Wilson's mum Natalie refused to comment on the matter, saying, "I have no idea what you or Marty are talking about."

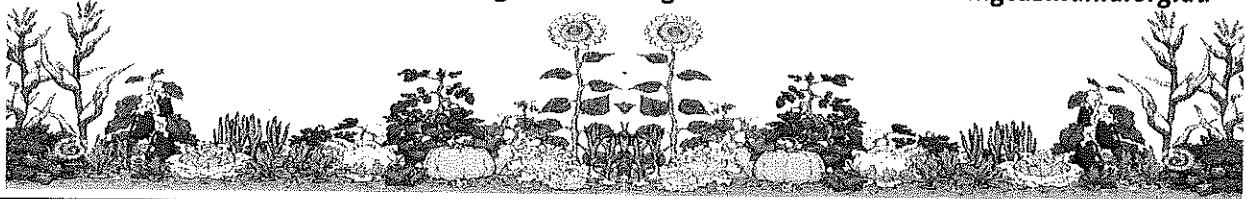
Wilson told the Advocate that he already hated his job and the whole experience has pushed him closer towards quitting and re-taking a job at Woollies.



Tasmania Planting Guide for June

Asparagus crowns, early potatoes, rhubarb divisions, Jerusalem artichokes, globe artichoke suckers, potato onions, chives, shallots, long-keeping onions, broad beans, spinach and garlic cloves.

Ph 6234 5566 / info@sustainablelivingtasmania.org.au www.sustainablelivingtasmania.org.au



LJ Hooker



Kate Walsh

Your local area specialist in St Marys and Scamander. For an obligation free market appraisal please contact Kate Walsh from LJ Hooker St Helens.

Ph: (03) 6376 2300

Mobile: 0419 683 904

Email: kwals@sthelens@lh.com.au

raywalkerIT

- Web development & hosting
- Home & business solutions
- Hardware & software
- Antivirus & system repair
- New & used systems for sale
- Pickup & delivery
- 20+ years experience

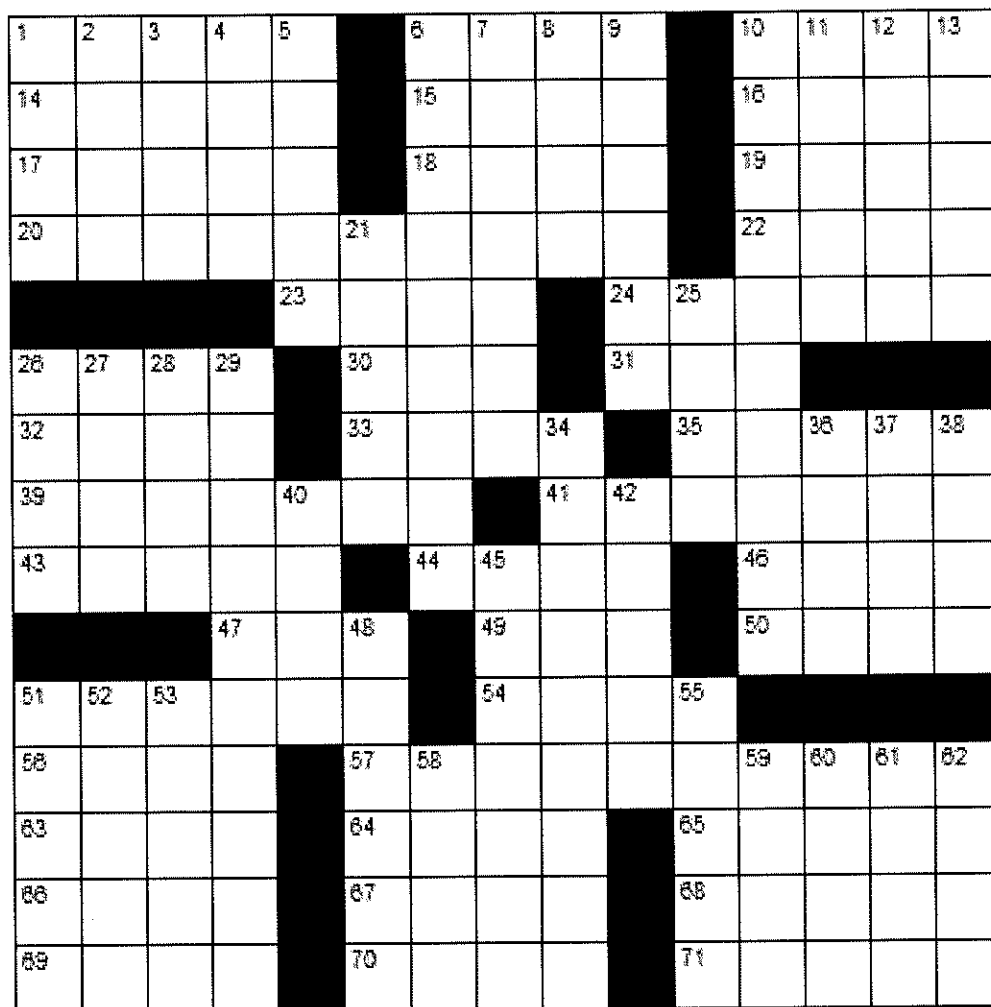
Ph 0401 497 199

Email hello@raywalker.it

Web <https://raywalker.it>

ACROSS

1. Fictional deer
6. Display
10. Mend (archaic)
14. Homeric epic
15. Eastern discipline
16. Bucolic
17. Backside
18. Mobile phone
19. Arid
20. Sponge
22. Dirty air
23. Large luxurious car
24. Apprehensive
26. Against
30. Not high
31. Gender
32. Sign of boredom
33. Sea eagle
35. "Smallest particles"
39. A part of a broadcast serial
41. Daytime performance
43. Install (2 words)
44. Self-satisfied
46. Stringed instrument
47. One time around
49. Anagram of "Ail"
50. Former lovers
51. Someone held in bondage
54. Being
56. Warmth
57. Acculturate
63. Hindu princess
64. Within
65. Indian millet
66. Therefore
67. Maize
68. Consumer of food
69. Biblical garden
70. Prima donna problems
71. Slices of twice-baked bread



DOWN

- | | | |
|-----------------------------|----------------------|--|
| 1. Clout | 13. Mournful poem | 42. Discrimination against the elderly |
| 2. Winglike | 21. Lubricated | 45. Musical master |
| 3. Not yours | 25. Tidy | 48. Large European flatfish |
| 4. Curse | 26. Yeses | 51. Half of six |
| 5. Eclogue | 27. Back of the neck | 52. Listened to |
| 6. Maples | 28. Blockhead | 53. Cooktop |
| 7. Square dance | 29. Protection | 55. Duck down |
| 8. Leer at | 34. Colloids | 58. Kiss |
| 9. Large tusked sea mammal | 36. Chalcedony | 59. Hawaiian feast |
| 10. Relating to a leap year | 37. No more than | 60. The products of human creativity |
| 11. Swelling under the skin | 38. Views | 61. Journey |
| 12. Beginners | 40. Iridescent gem | 62. Hearing organs |

Solution on p29

Libraries (Closed public holidays)

61 Cecilia Street St Helens
6387 5530
Mon, Tue, Wed, Thurs
10am - 1pm, 2 - 5pm
Fri 10am - 1pm, 2 - 6pm
Sat 10am - 12pm

31 Main Street St Marys
6372 2114
Mon, Wed & Fri 12.30 - 4pm
Tue & Thurs
10am - 12.45pm

Fingal Online Access Centre
29 Talbot Street 6374 2222
Mon, Wed & Fri 9am - 4pm
Tue & Thurs 9am - 12pm



St Marys Community Health Centre
Gardiners Creek Rd St Marys Tasmania 7215
6387 5555

GP Surgery Hours
Monday - Friday

8:50 - 10am

(10 - 10:30am reception closed)

10:30am - 12.30pm

(1:00 - 1:30pm reception closed)

1:30 - 3:00pm

(3:00 - 3:30pm Reception closed)

3:00 - 4:30pm

Pathology Service – Bloods

There is no pathology service prior to 8.30am.

If you require pathology prior to 8.30am i.e. urgent blood test and / or a fasting test, an appointment must be made at the Nurses' Station the day / evening before on 6387 5555

Pathology hours are 8.30 - 11am and 2 - 4pm, Monday-Friday

Scripts and Doctors' Appointments

Please ensure doctors' appointments are booked **PRIOR** to your medications running out, or **IN ADVANCE** if you attend this practice regularly.

Please be patient Waiting periods to see your doctor may be experienced. We are not able to issue scripts during the weekends, please ensure you have enough in advance. Please be aware we are not able to issue scripts by phone.

St Marys Medical Practice reminder

Dr Latt wished to remind the community of the following exceptions to bulk billing at the SMCHC:

Driving licence renewals	Insurance medicals
Requested medical reports	Harness medicals
	Pre-employment checks

These are NOT covered by Medicare, and may incur costs. Please discuss this with reception when booking. If you have any concerns, please contact us and we will try and address them

SMCHC Teaching Site

We are a **UTAS teaching site**. We regularly host students from various health faculties, who attend our site to participate in training placement. If you are attending this practice and would prefer the students do not sit in on your consultation, please inform reception prior to your appointment. These placements are very important for the students, so your cooperation is greatly appreciated.

Doctors Roster

Dr C Latt

3/7/17-14/7/17

Dr K Nash-Rawnsley

30/6, 4/7, 7/7, 11/7 & 14/7 2017

**Non-attendance of
Doctors' appointments**

Please be aware there is a non attendance policy at this practice. If you miss three appointments you will be sent an account. If you miss a fourth appointment you may be referred to another Medical Practice.

Due to demand, doctors' appointments need to be booked at least two weeks in advance.

Waiting periods can apply.

A.H. contact numbers

GP Assist 1300 780 011

Ambulance or 1800 008 008

Emergency 000

Lifeline - Saving lives, crisis support and suicide prevention 13 11 14

St Marys Community Health 6387 5555

Centre - please ring before presenting after hours

INR tests require a 5 minute doctors' consultation.
Please inform reception when booking

Are your details up to date? Do you have a new address / phone number? Do you have a new Centrelink / Medicare card? Have you updated these details with us? Sometimes we need to contact you, or pass your details on to other health professionals.

You may also be charged for some medical services if your Centrelink / Medicare cards are not current If any of your details have changed, please contact us on 6387 5555 or call in and see our friendly reception staff for assistance.

Waiting area at the Health Centre

The waiting area for **ALL** services at the St Marys Community Health Centre is in the reception area. Please report to reception upon arrival and the consultant you are here to see will be told and they will come and collect you from this area.

St Marys Community Health Centre
Gardiners Creek Rd St Marys Tasmania 7215
6387 5555

What's on at the Centre

June 29 **Adult Community Mental Health Worker 1-3pm**
2nd Bite Delivery

July 3 **Max Employment 8:30am-5pm downstairs**
Hospital Auxiliary Meeting 2pm in the Family Room.

July 4 **Child Health Session** with Mary Mumford Tuesday fortnights, by appointment only. Ph 0428 136 381
Occupational Therapist Danyelle Briggs by referral from your Health Professional.
Anglicare Drug & Alcohol Officer 11am-1pm

July 5 **Day Centre**- call Hayley Gilbert on 6387 5555 for information on the group.

TAZREACH Antenatal Clinic with Katie. Contact GP for appointments

July 6 **2nd Bite Delivery**

July 12 **Day Centre** Ph Hayley Gilbert on 6387 5555 for information on the group

B **Art therapy** is the deliberate use of art-making to address psychological and emotional needs. Its benefits include fostering self-expression, enhancing coping skills, managing stress and strengthening a sense of self. This translates into improved communication, behavior, and cognition. The St Marys Day Centre clients have been using various silhouette tree shapes to create their own interpretation of autumn trees, utilising a variety of resources. For the past two weeks the art work has been on display in the reception area of the Health Centre. We have been running a People's Choice Award and a Voters Award to select your favourites artwork from the display.

Congratulations to our
Artwork Winner:

Number 13 - Nanette Adams

Congratulations to our
Voter Winner:

Mrs Rosa Byard

Thank you to everyone who voted, your support is greatly appreciated!



Appointments will be available for the BreastScreen Tasmania Mobile Unit in ST MARYS from June 26 to July 4, 2017

Location: Rear of St Marys Community Health Centre, Gardiners Creek Road

BreastScreen is a free service. To make an appointment please phone 13 2050

*The preceding information on this page supplied by
St Marys Community Health Centre, Gardiners Creek Rd
St Marys Tasmania 7215*

St Marys
PHARMACY

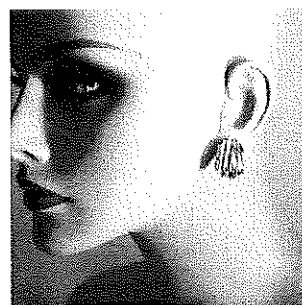
Main Street St Marys

Ph 6372 2844

Kodak prints from 45¢

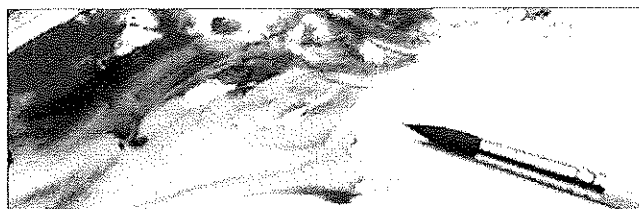
Ear piercing \$27
includes earrings
and solution
with qualified
staff

Bec, Sally and
Cassie



Pharmacist instore Monday to Friday

When Miley Cyrus gets naked & licks a hammer it's "art" & "music". But when I do it, I'm "drunk" and "have to leave the hardware store".



187 words of three letters or more were found
in **BIOGRAPHICAL?**

aah	biopic	cigar	hag	
aargh	bipolar	cilia	hail	
abaci	birch	clap	hair	
abhor	blah	clip	haircap	pair
aboral	blip	clog	halo	pal
achiral	blog	clap	hap	par
agar	boa	coal	harp	para-
agaric	boar	cob	hilar	bolic
ago	bocal	cobra	hip	paralog
agora	bog	cog	hoar	parboil
agrapho-	boil	coil	hog	parch
bic	bop	cola	hop	pariah
aha	boric	cop	iliac	paro-
ail	bra	copra	lab	chial
air	brachial	coral	labor	phi
airbag	brag	corgi	lag	phobia
airgap	broach	crab	lahar	phobiac
alb	broil	crag	lair	phobic
alga	cab	crap	lap	pig
alibi	cabal	crib	larch	pili
alobar	cap	crop	lari	poach
aloha	car	gab	liar	polar
alpha	cargo	gal	lip	porch
apical	carob	gala	lira	racial
apolar	carol	gap	lob	rag
april	carp	garb	lobar	rail
arc	carpal	garlic	loch	rap
arch	carpi	girl	loci	rho
aria	chair	glia	log	rial
aril	chap	glib	logic	rib
baa	char	glob	lop	rich
bag	chara	goal	oar	rig
bail	chi	gob	oil	rip
bar	chili	grab	oilrig	roach
barhop	chip	grail	oligarch	rob
big	chiral	graph	opal	roil
bio-	chirp	graphic	oral	
graphic	choir	graphi-	orb	
bio-	chop	cal	orca	
graphical	choral	grip	pail	



The Bass Strait Triangle

Almost 40 years ago, a young pilot mysteriously disappeared over Bass Strait between Tasmania and Melbourne. His last radio conversation with Air Traffic Control talked of a flying object – not an aircraft – soaring above him and playing some sort of game.

Twenty year old Richard Valentich and his plane were never seen again.

Here is the (slightly abridged) exchange (with punctuation and capitalization added), taken from the transcript of the audiotape (beginning at 19:06:14):

Valentich: Is there any known traffic below five thousand [feet]?

Robey: No known traffic.

V: I am—seems [to] be a large aircraft below five thousand.

R: What type of aircraft is it?

V: I cannot affirm. It is [sic] four bright, it seems to me like landing lights. . . . The aircraft has just passed over me at least a thousand feet above.

R: Roger, and it, it is a large aircraft? Confirm.

V: Er, unknown due to the speed it's travelling. Is there any Air Force aircraft in the vicinity?

R: No known aircraft in the vicinity.

V: It's approaching right now from due east towards me. . . . [Silence for 2 seconds.] It seems to me that he's playing some sort of game. He's flying over me two, three times, at a time at speeds I could not identify.

R: Roger. What is your actual level?

V: My level is four and a half thousand. Four five zero zero.

R: And confirm you cannot identify the aircraft.

V: Affirmative.

R: Roger. Stand by.

V: It's not an aircraft. It is—[Silence for 2 seconds.]

R: Can you describe the, er, aircraft?

V: As it's flying past, it's a long shape. [Silence for 3 seconds.] [Cannot] identify more than [that it has such speed]. [Silence for 3 seconds.] [It is] before me right now, Melbourne.

R: And how large would the, er, object be?

V: It seems like it's stationary. What I'm doing right now is orbiting, and the thing is just orbiting on top of me also. It's got a green light and sort of metallic. [Like] it's all shiny [on] the outside. [Silence for 5 seconds.] It's just vanished. . . . Would you know what kind of aircraft I've got? Is it military aircraft?

R: Confirm the, er, aircraft just vanished.

V: Say again.

R: Is the aircraft still with you?

V: [It's, ah, nor-] [Silence for 2 seconds.] [Now] approaching from the southwest. . . . The engine is, is rough idling. I've got it set at twenty three twenty four, and the thing is—coughing.

R: Roger. What are your intentions?

V: My intentions are, ah, to go to King Island. Ah, Melbourne, that strange aircraft is hovering on top of me again. [Silence for 2 seconds.] It is hovering, and it's not an aircraft.

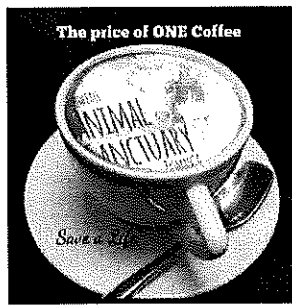
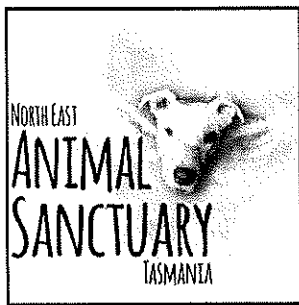
[Silence for 17 seconds, open microphone, with audible, unidentified staccato noise. End of transcript.]

http://www.csicop.org/si/show/the_valentich_disappearance_another_ufo_cold_case_solved

How many words of three letters or more can you find in



Valentich with a Cessna similar to the one he disappeared in.



Gorgeous Patch is still waiting for his perfect forever home. Patch is a dalmatian x wolfhound so will grow to be a big boy. All his vet work is done, he starts beginners classes next Sunday which goes for 6 weeks.

(If he's adopted in that time the new owners are free to complete the course at no extra cost to them)

ADOPT, DON'T SHOP

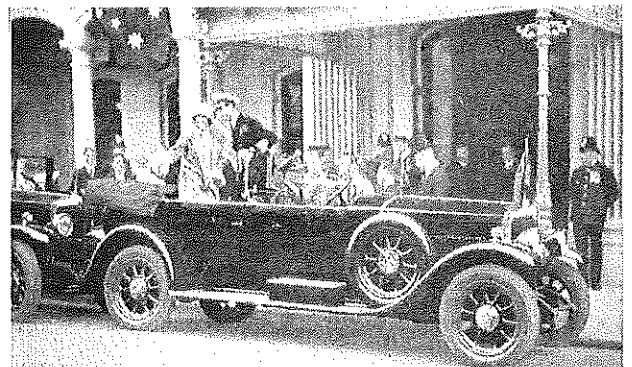
0457 081 533

michelle.jesson@bigpond.com



Tasmania Way Back When

<https://www.facebook.com/tastime/photos/>



1927 Their Royal Highnesses the Duke and Duchess of York arriving at the Brisbane Hotel in Launceston



1954 Royal Visit, Latrobe, press convoy

Harris Funerals

St Helens, Bicheno & Fingal Valley

*We are here when you need us.
Burial or cremation, traditional or
unique funeral services available.*

Office & Chapel:

46 Tully Street St Helens

6376 1153 ~ 0418 133 420

tamara@harrisfunerals.com.au

Member of the
Australian Funeral Directors Association





St Marys IGA Supermarket

38 Main Street 6372 2240

Butcher instore weekdays 8am - 2.30pm

6372 2274

Monday - Friday 8am - 6.30pm

Saturday 8am - 5pm

Sunday 10am - 5pm



Butchery specials June 28 - July 4

p/kg

Boneless Pork Roast

12.00

Lamb Loin Chops

19.00

Topside Beef Roast

13.00

Beef Casserole Steak

14.00

Ingham Chicken Breast Fillets

10.00

Butchery specials July 5 - 11

p/kg

Leg Of Lamb

10.00

Ingham Chicken Drumsticks

3.49

Nichols Chicken Maryland

7.00

Forequarter Lamb Chops

12.00

BBQ Meat Pack

12.00

Two week specials June 28 - July 11

So Good Regular 1L

2.00 save 0.55

Peters Drumsticks 4pk

3.99 save 4.00

Morning Fresh Dish Washing Liquid 400ml

1.97 save 1.98

Pantene Shampoo or Conditioner 350ml

3.49 save 3.50

Kelloggs Coco Pops 650g

5.50 save 2.09

Just Juice Long Life 2L

2.00 save 1.35

Coon Cheese 1kg

8.00 save 1.90

Cold Power Laundry Powder 2kg/ Liquid 2L

8.49 save 8.50

Pedigree Meaty Bites 2.5-3kg

9.00 save 1.80

Whiskas Vita Bites 1kg

4.00 save .70

St Marys Sports Centre Inc.

Gray Road St Marys

Bar opening times - Winter months

Friday 5 - 10 or until close. Happy Hour 6.30 - 7.30pm

Raffle, Lucky Members Draw, Pick a Pen, Wheel Spin!

Cheap Prices. Saturday 1 - 6pm or until close.

Sunday 1pm onwards. Warm fire.

Open last Thursday of each month 4pm onwards.

President J Bianchi 0439 978 156

Secretary B McDonald 6372 2429

Treasurer J Turner 6372 2429

Bowls news At time of last print we were not informed of the selection of Logyn Curtis of Scamander in the State Junior Squad, for the 3rd time! We will watch your progress with great interest, and we now have 3 teenagers from the east coast in the Squad. Liam, Patrick and Logyn are training and will be placed in their teams this week.

Golf news 2 person Ambrose on Saturday 17 - Steve and Paul 37, Brad and Mac 39, Paul nearest pin on the 7th. Gross Saturday 24, G Mac - R McGiveron 35 nett, B Mac - Diesel 35½ nett, J Mac - Steve 38 nett, Mark T - Mark C 42 nett, nearest pin R McGiveron.

Golf is now played each Saturday at 1pm. Nice to see some old and new faces each week. All the hard work has been worth it. Thank you to the volunteers.

General news Tamatha's Christmas in July posters are out. Saturday July 22 at 5.30pm, \$25 per adult or \$15 per child. Max of \$75 per family. 2 course Christmas meal; specialty prizes for children, lucky door and seat prizes, 'Santa is coming' and much more. Limited seating available so bookings essential prior to Saturday 15. Please phone Jacqui on 0439 978 156 or Tamatha on 0427 332 085.

Jam Session on Sunday July 9, cheap prices - food and fun!

The Valley and East Coast Voice Inc. is available at the following outlets:

Avoca Post Office

Coach House Restaurant

St Marys

The Farm Shed, Bicheno

Hilly's IGA St Helens

Hilly's IGA St Marys

Holder Bros Fingal

Mathinna Post Office

Scamander S/market

St Marys IGA

St Marys Newsagency

Shower Thoughts:

I think we don't give the pig enough credit. After all he changes vegetables into bacon. Can you do that?

It's sort of a superpower.

Printed and published by
The Valley and East Coast
Voice Inc.
POB 230
St Marys Tasmania 7215.



0 609722 951852