

THE VALLEY AND EAST COAST VOICE INC.

Established 1968

50.15 November 16, 2017

Deadline for 50.16 is November 27, 2017

Guy Barnett, Liberal Member for Lyons
November 7, 2017

Work begins on new St Helens District Hospital

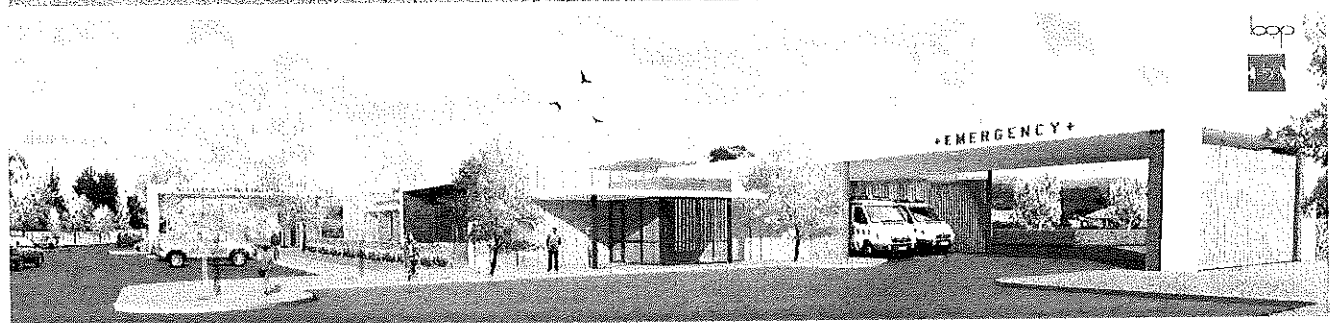
The Hodgman Liberal Government is Building Tasmania's Future and that includes investing in vital regional health facilities so that local communities get the health care they deserve in facilities that are fit for purpose.

This week, work has commenced on the new \$12.1 million St Helens District Hospital, with local building company Fairbrother Pty Ltd winning the tender for works.

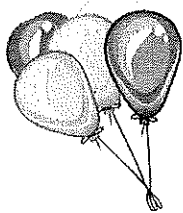
The completion of construction is expected by December 2018. *Continued on p6*



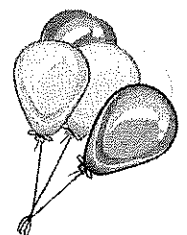
Tasmanian
Government



MONSTER MOVING SALE - November 18 and 19



- Tools
- Furniture
- Gardening
- Homewares
- BBQ
- Collectable dolls
- Chainsaw



23 Gardiners Creek Road, St Marys

Editor: Wendy Dawson
wdawson@valleyvoice.com.au
0403 430 452

website: valleyvoice.com.au
facebook.com/ValleyEastCoastVoice
POB 230 St Marys Tasmania 7215
For all account queries please contact
rodhunt@netspace.net.au

Advertising rates 2017

Business card size	½ page ads \$40
ads \$15	Full page ads \$65
Intermediate ads \$18	Permanent classified ads
¼ page ads \$25	\$20 p.a.

Valley and East Coast Voice Inc.

Advertising rates for all community groups

Regular articles i.e. news of current activities / events and general information will, at the discretion of the Editor, be carried free of charge.

Any community group requiring a full page will be charged 50% of the commercial rate, after proof of eligibility.

The decision regarding whether or not an article attracts advertising fees is the Editor's. Groups will be advised of any cost before going to print.

Private community announcements / private classifieds are free for two issues.

Annual posted subscriptions are \$69 and annual online subscriptions are \$20.

Articles for publication may be left at the St Marys Pharmacy, posted or emailed.

We do not accept responsibility for the accuracy of information provided by contributors.

Visit our website valleyvoice.com.au and look back over ten years of archival content, galleries and stories, in addition to each new issue.
Leave a comment / suggestion on what you would like to see included.

24h Emergency services numbers

Abuse & Assault Services	1800 737 732
Ambulance, Fire & Police	000
Crime stoppers	1800 333 000
Digital mobile Phone emergency service	112
Poisons Information	13 1126
SES Flood & storm emergencies	13 2500
TasNetworks	13 2004
TasWater	13 6992

The Valley and East Coast Voice Inc. Guidelines

Opinions in any letters published are not necessarily those of the Editor and committee, or volunteer staff.

Our pages remain open to fair and honest criticism so that on all questions both sides may be presented, but any submissions containing personal attacks / libel / slander will not be accepted.

Kindly do not attack the editor, the paper or the authors of previous articles.

All articles for submission must bear the author's name, town of residence, address and phone number. The address and phone number will not be published but are for verification purposes only.

Letter writers will be given the chance to respond over a suitable period of time.

Subjects may be closed at the editor's discretion.

Please make sure of your facts. Do not write submissions just to let off steam.

Articles most commonly published are those relating to current community issues.

Keep articles short, simple and to the point. Letters are restricted to 300 words or fewer.

The editor reserves the right to edit any submission for grammar, spelling or reduction in size where necessary.

All letters/emails must include your full name, address and contact phone number.

The Valley and East Coast Voice Inc. reserves the right at all times, without notice, to update, change or amend our guidelines.

All information is correct at time of printing.

Whilst we value and welcome community input, the Valley and East Coast Voice Inc. does not provide specific feedback regarding any decision made not to publish a submission.



Meals on Wheels | More than just a meal
Tasmania

St Marys roster

0488 384 344

November 16	Lynne Fitzgerald
17	Kerry Veldum
20	Valmai Spencer
21	Pam Bretz
22	Louise Keady
23	Heather Griffiths
24	Karl Balzer
27	Valmai Spencer
28	Pam Bretz
29	Louise Keady

Community Notices

Nutrition consultations will now be available at the St Marys Community Health Centre one day a month.
For more information or to make a booking, please call 0418 523 689

ROSSARDEN Fire training and BBQ dates are: December 2. Fire Brigade training is 10am prior to each BBQ.
Mike Prewer, Rossarden. 6385 2184

GET meeting dates for 2017 November 24 and December 4, 7pm at the Fingal Valley Neighbourhood House
Mary Knowles 6385 2002
gippscreek@skymesh.com.au

The next **AVOCA Market** is **Saturday December 9, 2017** in the Hall. Contact Shirley at the Post Office on 6384 2129 or 6384 2259



Malahide Golf Club

A notice to all members, the **Annual General Meeting** will be held at the Clubhouse, Mangana Road, Fingal on **Saturday November 25, 2017 at 2:30pm.**
Bill Swann, Honorary Secretary 0408 568 678

MEGA GARAGE SALE

Silver Sands Motel

80 Burgess Street, BICHENO (10am - 4pm)

17 - 20 November

(Fri, Sat, Sun & Mon)



Furniture, Doors, Carpet,
Commercial Vinyl, Manchester,
Ex Motel Items, Bric a Brac, Free Items.

www.TasShacks.com.au



Now also hosting
BAGDAD QUILTING SUPPLIES with JUDY DUCKETT

0417027424 - 37 main street st marys tas 7215

The **Annual General Meeting** for St Marys Association for Community Development incorporating the St Marys Online Access Centre will be held at the St Marys Online Centre, 38b Main Street St Marys 7215 at 10.30am Friday December 1, 2017.

Paul Byard, President SMACD - 0435 592 664

Garage Sale: Saturday November 18 at
41 Gray Road St Marys
9.30am until 2.30pm

For Sale

3 pneumatic wheeled Steelcraft **pram**, clean, \$50.
Pauline 6372 5464

Huon pine slabs starting from \$200, also **King Billy Pine** lots: boards, slabs, bundle of sizes. **Steve 6377 1209**

I may be old and feeble, but I'm still selling **moo poo**.
Norm 6372 2380

Thorn double **sewing cabinet**. Will hold sewing machine and over locker. Good condition. \$100
Val 0437 397 219

Home Hero **steam cleaner**, \$20. Hoover Freejet cordless **vacuum cleaner**, \$50. Epson Expression Home XP 432 printer, \$50. All hardly used. Feast Watson long lasting water based **decking oil**, jarrah colour 10L \$70.
Ph 0418 540 155

St Marys Rivulet Flood Management

Interim Flood Study report & new flood maps

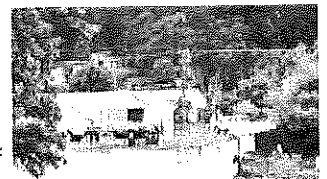
Community flood management workshop

3pm, Dec. 2nd, St Marys Town Hall

&

See us at the market that day — take a rivulet walk with river engineer Julian Skipworth

- Use the new maps to help identify options for flood mitigation, which the next stage of the project will test



- Q&A and have your say
- Find out about the SES Community Flood Protection Plan and help to do household and business Flood Plans in 2018.

For more info: Polly Buchhorn at Council on 63767900.



Break O'Day

Supported by the SES through the
Natural Disaster Resilience Grants
Program.

Letters to the Editor

Dear Editor,

Whilst I appreciate Mayor Mick Tucker has taken the time to respond publicly to my letter concerning the very poor state of the St Marys rivulet, it appears his assertions of 'fact' are as confused and vague as the BODC involvement in the matter to date. So I have some direct questions for Mayor Tucker I hope he can answer more clearly. But firstly I'll clarify Mayor Tucker's understanding that its only 'some' of St Marys residents see the rectification/flood mitigation of St Marys Rivulet as a simple solution. It is very clear that the majority of residents feel this way.

If BODC are not responsible for the waterways, why waste all the State Govt funds allocated for flood mitigation on a water study prior to discussing what really needed to be done directly with St Marys residents? You state that the waterways are the responsibility of the owners of the land they pass through under State Govt legislation. Which statute are you quoting from? Because there are several conflicting statutes that indicate responsibility including:

- Rivers and Waterways Dept (disbanded by Tasmanian State Govt so that still leaves it a state responsibility).
- Tasmanian Parks and Wildlife (more advisory on responses to flooding damage than taking any responsibility).
- Original Australian Law that the land owner is responsible to the half way point (middle) of the river.
- Local council responsibility for rehabilitation and restoration of waterways as well as storm water drainage.

So which statute/by law/rule of thumb are we choosing to adhere to?

If in fact the local land owners are being held responsible by BODC, why wasn't effective collaborative discussion held before council decided to blow the allocated state funds on a study? If BODC accepts some responsibility and permission was sought by a BODC works crew for access to clean up the river, it would certainly be granted by those most affected so this argument is moot. The shallowness of the rivulet caused by flood deposit of shale and wood means that an excavator could travel up the river in sections and effectively clean the water way in reverse without requiring much private access or further damage/erosion to river banks.

The 'science' of improvement that you've mentioned as to why the waterway hasn't been maintained since the 1970's is bemusing.

The clean, deep, crystal clear water that many people in this town grew up swimming and fishing in, with platypus, trout and other fish life in abundance, has now been replaced with a shallow, choked, stagnant, algae polluted trickle that breaks its banks in moderate to heavy rain to now consistently replicate '150 year' flood events. This is what we get for advances in science?

Lucky us.

Its a massive contradiction to state that BODC are prepared to gather best practice information on river management (but say they're not responsible) and involve the community (after they've already spent the allocated budget).

Continued next column ...

So where in fact does BODC really stand on this matter? Getting splinters sitting on the bench, or firmly with its St Marys constituents on getting an effective works program (that could have strong element of community hands-on involvement) in place to clean up the river before the next heavy rains?

Because your effectiveness as our mayor will be severely tested if St Marys floods again and BOD Council are still 'gathering information'. Rather than waging our counter-arguments with tit-for-tat in the Valley Voice, I'm always available to discuss this matter with you personally as it isn't going away.

Terry Knight, St Marys

Dear Editor

THE FLAG

On ANZAC Day rosemary is worn, and on Remembrance Day we wear a poppy. Both are symbols of remembrance, and over both ceremonies flies the flag, the Australian Flag, the symbol of a nation which suffered such dreadful loss of lives in both major conflicts, and the later combats which never seem to stop. WW1 was supposed to be the 'War to End all Wars'. If only.

We found the poem about the Flag on the web some time ago, so it is an 'oldie', but despite efforts to have the flag changed, the poem describes what the flag meant to so many.

Let us put aside any arguments for change just for the moment and reflect on the wording.

Toni Brewster, Chain of Lagoons

THE FLAG



The Flag bears the the stars that blaze at night,
In our southern sky of blue,
And the little old flag in the corner,
That's part of our heritage too.

It's for the English, the Scots and the Irish,
Who were sent to the ends of the earth,
The rogues and the schemers,
The doers and the dreamers,
Who gave our Australia birth,

Though there are plenty of people who'll tell you
How when Europe was plunged into night,
That the little old Flag in the corner,
Was their symbol of freedom and light.

It doesn't mean we owe allegiance
To a forgotten imperial dream,
We've the stars to show where we're going
And the Flag to show where we've been.

It's only an old piece of bunting,
It's only an old piece of coloured rag,
But there are thousands who died for it's honour,
And shed their best blood for our Flag.

Hilly's IGA St Marys



Open 7 days a week

'think Hilly's, think convenience'

Pizzas made wholly in house,
ready to cook.

Large range of salads
made fresh in-store.

Succulent BBQ Chickens
cooked to perfection.

Cookies fried chicken
and hot chips available 7 days.



Hilly's IGA St Marys and St Helens

'we stand for fresh'

C & D EXCAVATIONS

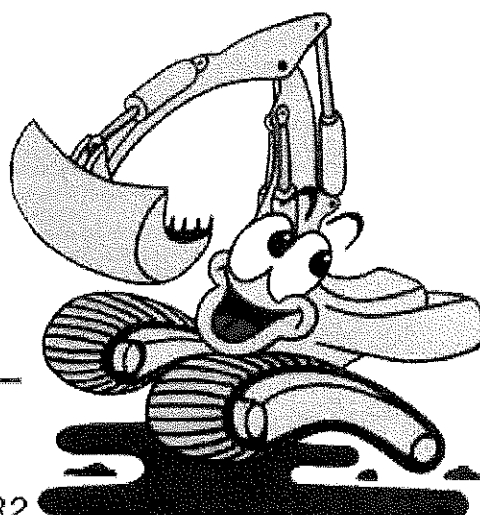
For all your earthmoving requirements

- Road gravel.
- Top soil, screened topsoil.
- Sand and rocks.
- On sight screener 20mm - 75mm.
- 20 tonne excavators with tilt bucket, ripper, rock and log grabber and quick hitch.
- D65 Komatsu dozer with ripper and tilt blade.
- 10 yard tipper.
- Compaction roller.
- Wheel loader.

Dams, roads, firebreaks,
land clearing, house sites,
drainage, bridge construction
and much, much more ...

LOCAL OWNER/OPERATOR WITH
OVER 25 YEARS EXPERIENCE

Call Dana or Craig: 6372 2033/0439 722 032



Continued from front page

The existing St Helens District Hospital has suffered from continual flooding events over the years, and a new site was sought with area for future expansion to cater for the needs for East Coast residents. The new hospital in Annie Street will only be a few minutes away from the current site, and the new hospital will feature 10 inpatient beds, four emergency bays, four consultation rooms, two physio rooms, and three rooms to provide space for education, training, community nursing or other needs. In addition there will also be a range of new facilities to provide diabetes care, radiology and oral health. This will be a great result for St Helens and the Greater East Coast region, and demonstrates the hard work the Hodgman Government has been doing to improve Tasmania's health system.

Contact: Rebecca Ellston on 0428 374 122

Brian Mitchell MP, Federal Labor Member for Lyons Lyons Armistice Centenary Grants Program Open

The Armistice Centenary Grants Program is open now across the federal electorate of Lyons. Councils and community organisations are encouraged to apply for funding for projects that commemorate the end of the First World War.

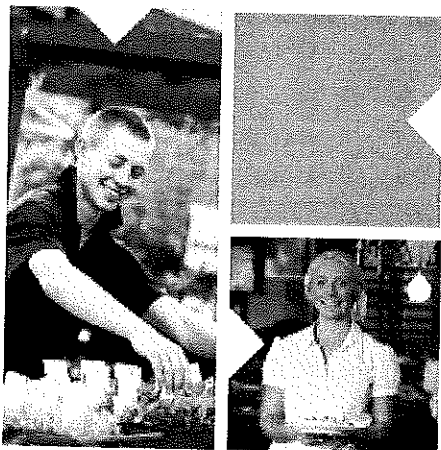
"I'm calling on community groups, service organisations, museums, councils and schools to get their expressions of interest in to my office for projects between \$3000 and \$10,000," said federal Lyons MP Brian Mitchell.

"Projects must be a local, community-based project or activity that links directly with the centenary of the Armistice or commemorates WWI and you can be as creative as you like. Events like public commemorations, new war memorials, new honour boards or plaques, restoration of memorials, publications, educational projects and school initiatives are just some of the possibilities.

"Applications close mid-January 2018 so communities have time to coordinate their ideas and get as many people on board as possible.

"I'll be pulling together a community panel to go through the applications and make recommendations to the department."

For more information email brian.mitchell.mp@aph.gov.au or call 6263 3721 (southern) or 6398 1115 (northern).



All your business
needs in one place

business.tas.gov.au

Getting behind and backing small business

At Business Tasmania, our mission is to help you start, run and grow a small business in the state.

Our service is easy to access, free and confidential. We provide:

- free business advice through Enterprise Centres Tasmania and personal development opportunities through a range of initiatives, such as Mentoring for Businesses in Growth
- the latest news about workshops, events and initiatives to help you and your business grow
- a range of tools, tips and information about running a small business in Tasmania
- referrals to other relevant support services or government agencies.

Do you have a question? Email us anytime at ask@business.tas.gov.au

Or call us on 1800 440 026 or contact us via Facebook [@BusinessTasmania](https://www.facebook.com/BusinessTasmania) or Twitter [@businessstas](https://twitter.com/businessstas)

Celebration and Closing Service for St Peters Anglican Church, Fingal

3pm Sunday November 26, 2017

On November 26, community members and parishioners past and present are invited to join together at St Peter's Anglican Church in Fingal to celebrate the many years of memories formed in and around this local landmark that has been part of community life for over 130 years.

This celebration will mark the conclusion of Anglican worship in this beautiful and historic building.

The church has played an important role in the lives of many in the community, a fact plainly evident by the good number in attendance at the community meeting held in the Church in April.

Sadly the decision has been made for worship gatherings to cease at St Peter's, as over a number of years the Christian community has dissipated locally, and has instead developed other ways to celebrate their Christian life and encourage one another.

Although St Peter's will be closed, Holy Communion and worship gatherings are still held 10am every Sunday at Holy Trinity, St Marys, and 9am St Luke's Campbell Town.

The Parish of the Northern Midlands continues to be the point of contact for pastoral services – **Contact: Revd. Ian Oates 0437 244 689**



Mt Elephant Pancakes

are hosting a fundraising dinner for the Christmas Parade Committee on November 18 at 6.30pm.

Tickets are \$25 p/p, and include 2 pancakes of your choice.

BYO alcohol and all drinks - bookings are essential.

Please contact Bree Sweet (a member of the Christmas Parade Committee) on 0438 597 559

Harris Funerals

St Helens, Bicheno & Fingal Valley

*We are here when you need us.
Burial or cremation, traditional or
unique funeral services available.*

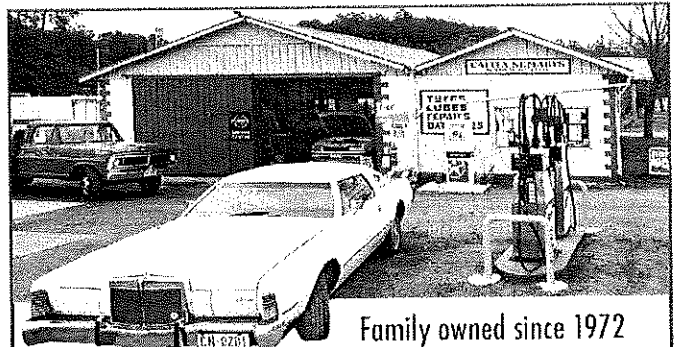
Office & Chapel:

46 Tully Street St Helens

6376 1153 ~ 0418 133 420

tamara@harrisfunerals.com.au

Member of the
Australian Funeral Directors Association



Family owned since 1972

CALTEX ST MARYS

Mechanical repairs and
all routine servicing.
Batteries, tyres (including white walls).
Old school V8s and 6s loved
and nurtured, even Holdens!
• FUEL AVAILABLE 24 HOURS •

41 Main Street. Ph: 6372 2335
caltexstmarys@bigpond.com

St Helens doctor urges residents to be vigilant about skin cancer

With Skin Cancer Action Week commencing 19 November, and with Australia having one of the world's highest skin cancer rates, a new St Helens doctor who has just spent 17 years in the Northern Territory dealing with skin cancers among the mining community is urging residents to reduce their risks with some simple precautions.

GPs across Australia have more than a million consultations with patients about skin cancer every year. Skin cancer accounts for around 80 per cent of all newly diagnosed cancers, and an estimated two in three Australians will be diagnosed with it by age 70, while more than 2000 die from it annually.

Dr Colin Smith is a GP at Ochre Medical Centre St Helens (ochrehealth.com.au/practices/ochre-medical-centre-st-helens-tas) with a strong interest in skin cancer and dermatology. Colin recently moved with his wife, who is a nurse, from Australia's hottest region – Arnhem Land in the remote Northern Territory – to one of Australia's coldest regions, Tasmania.

He says, "Tasmania might be the closest part of Australia to Antarctica, but St Helens residents are not free from skin cancer risks. In my first two weeks in St Helens I have already seen half a dozen skin cancer cases."

Dr Colin says residents need to be aware of, and be extremely vigilant when monitoring risk factors such as prolonged sun exposure. Around 95 per cent of skin cancers are caused by exposure to the sun. "It's important to cover up in the sun, and keep an eye on changes to your skin, such as new lesions, the size and shape of pre-existing moles, and pigmentation of moles and dark freckles.

"Check your skin regularly, especially sun exposed areas – but don't forget that melanoma can appear anywhere. If you notice any changes, or if you have a skin type that burns easily, get it checked by your GP or a dermatologist.

"A history of peeling, blistering skin and repeated sunburn can also increase your risk of developing skin cancer. Common risk areas including nose, ears, lips and backs of hands."

While melanoma is the most common cancer in young Australians (15-39 year olds) making up 20 per cent of all cancer cases, Dr Colin says as we get older, other forms of skin cancer become much more common.

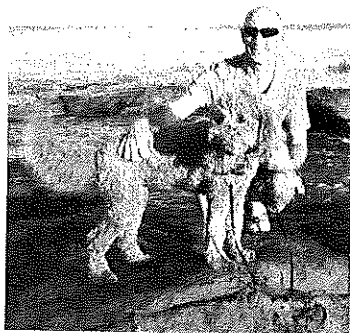
Dr Colin is currently available for skin checks among St Helens patients.

Ochre Medical Centre St Helens is located at 5 Portland Court, St Helens.

To book an appointment, call (03) 6376 2971, or visit www.ochrehealth.com.au to book online.

East Coast Vet Clinic

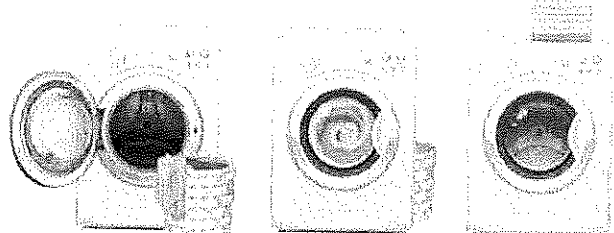
Dr Jeff Parsons regularly visits
the Fingal Valley
for all your veterinary needs.



*For appointments, please call the
St Helens clinic on 6376 1577*

CLEAN CRACK LAUNDROMAT

32 Main Street St Marys



Coin operated washers
and dryers
6.30am - 8pm

ST MARYS CHRISTMAS EVE CELEBRATIONS

Faulkner's Green St Marys
3 – 5:30pm

Free Jumping Castle, Free Face Painting
Free Giveaways

Prizes will be awarded for:

- Best decorated business
- Best Christmas lights
- Most festively dressed person
- Best dancer in the crowd
- Age and Gender prizes, and heaps more ...



Follow *St Marys Christmas Eve Celebrations*
on Facebook and stay up to date

Christmas Stocking tickets are on sale at
local businesses. \$1 per ticket.
Get your ticket NOW to go in the draw for
this fantastic prize!!

Register your details on Facebook or at the
St Marys Newsagency to go into the
random cash prize draw for decorating
your house!!

Advertisement

Kylie

Wright

A new voice for Lyons

Tasmanian
Labor

Putting people first

0439 742 946

kyliewright464@gmail.com

Authorised by Brian Mitchell MP
53b Main Rd Perth Tas 7300



Nominations for the 2018 Southern Cross Television Tasmanian Volun- teering Awards are now open!

To celebrate International Volunteer Managers Day yes-
terday, this morning Her Excellency Professor the Hon-
ourable Kate Warner, AC, Governor of Tasmania
launched the 2018 Southern Cross Television Tasma-
nian Volunteering Awards at Blundstone Arena.

In a true reflection of this, the Awards program has a
wide range of voting categories, including: tourism, arts,
and heritage; sport and recreation; emergency volunteer-
ing; community care; education and science; animal care
and conservation; as well as Volunteer Manager of the
Year, Volunteer Program of the Year and Corporate
Volunteer Program of the Year.

The nomination process has been made even easier this
year with fewer questions for many categories and a
'Hints' section.

Nominations will be accepted online via the Volunteer-
ing Tasmania website, and close at 5pm, March 2, 2018.

Awards will be presented at the beginning of National
Volunteer Week, 21 May 2018, in a formal ceremony at
Government House.

This awards program is entering its third year, and is an
initiative of Volunteering Tasmania and the Tasmanian
Government.

Nominate today!

ADVERTISEMENT



SENATOR
JONATHON DUNIAM
Liberal Senator for **Tasmania**

Supporting Tasmanian Seniors through the
Pensioner Concession Card

☒ Cheaper medicine under the PBS

☒ 24-hour helpline doctor visits ☒ Help with hearing services

7-11 Best St. Devonport TAS 7310 6424 5980

Senator.duniam@aph.gov.au SenatorDuniam

Authorised by Senator Jonathon Duniam, 5-7 Best St, Devonport TAS 7310

Over the years

2010 * 2010 * 2010 * 2010 * 2010 * 2010 * 2010



Forestry Tasmania's Wilba Williams (seated) gives a run down on the control room at the Scottsdale Forest Eco-Centre to fire tower observers. (left to right) Les Harper, Greg Porter, Doug Brown, Volker Hahl, Derwyn Williams, Robert Barnes, Bob Oates and Warren Speers.



Marguerite McWatters at the Material Girl Exhibition



George Keri of Scamander wins the 2010 GET Photo Competition with his photo of Ian Summers



ANZAC Day



Family Food Educators Graduate in St Marys

2010 * 2010 * 2010 * 2010 * 2010 * 2010 * 2010



St Marys Community Market



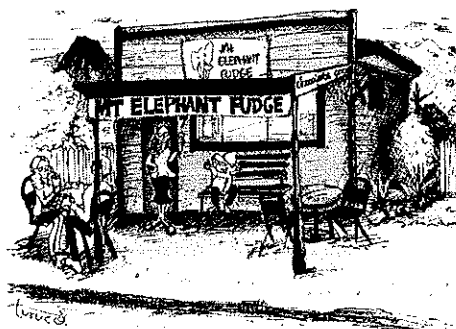
Understorey Walk and Talk participants



St Marys v Sorell, the coach planning strategies before the big match



SES, fire and ambulance Combined scenario



MT ELEPHANT FUDGE

Wednesday - Sunday
10am - 4.30pm

The weather is warming ..
Lets try a **FRESH FRUIT SMOOTHIE!**
Banana, Raspberry or Blueberry...
DELICIOUS ICECREAMS, MILKSHAKES,
THICKSHAKES & COFFEE of course ...
See you soon!



Australia's Biggest Morning Tea clients in St Marys

JOHN AND SUSAN WEBB

www.zort.com.au

WORDPRESS WEBSITES
SEO SPECIALISTS
ADWORD CAMPAIGNS
RESUMES AND COVER LETTERS

JOHN 0439 929 915 - SUSAN 0429 911 808
johnwebb135@gmail.com

Second round of the Building Better Regions Fund now open

- Applications now open for funding under the Building Better Regions Fund Round Two
- Two streams available: Infrastructure Projects and Community Investments
- Applications close on 19 December 2017

Senator Jonathon Duniam has urged organisations to apply for Round Two of the Australian Government's Building Better Regions Fund (BBRF), with applications now open for funding to support further job creation and economic growth in regional and rural Australia.

Senator Duniam said "the state has already benefitted from Round One, with a number of projects funded to improve community infrastructure and regional communications across the state.

"Round Two follows the highly competitive Round One which received over 900 applications under both streams with 257 projects totalling \$226.5 million, announced under Round One.

"The fact BBRF has two streams - Infrastructure Projects and Community Investments – means communities have even more flexibility in developing proposals. With submissions closing on 19 December 2017 for both streams, I encourage all eligible organisations to get their application in".

Acting Minister for Regional Development Darren Chester said BBRF was designed to back projects that create further investment in the community.

"Applicants should demonstrate how their project will drive economic development, make their region a more attractive place to live and foster partnerships across their community," Mr Chester said.

"Infrastructure investment, and planning and capability building are significant to improving outcomes in a community. A clearly articulated regional aged care strategy, for instance, can have as big an impact on residents as building a new aged care facility in a single town".

"When combined, both streams will encourage job creation, economic growth, and encourage social cohesion across Australia".

For more information on the Fund, or to submit an application, visit <https://www.business.gov.au/assistance/building->

Guy Barnett, Liberal Member for Lyons November 9, 2017

New Maria Island Ferry

As local Liberal Member for Lyons, I heartily welcome the recent launch of Maria Island's new ferry Osprey V.

The new ferry was officially launched by the Minister for Environment and Parks, Elise Archer last month and will allow more visitors to enjoy one of Tasmania's best tourism attractions.

Osprey V boasts an increased capacity of 60 percent over the current vessel, capable of accommodating 152 passengers. While on-board, passengers will be treated to modern facilities including food, drink and a licensed bar.

The Hodgman Government has set a target to have 70 percent of visitors stay overnight in our regional areas and increase visitor spend by 50 per cent by 2022.

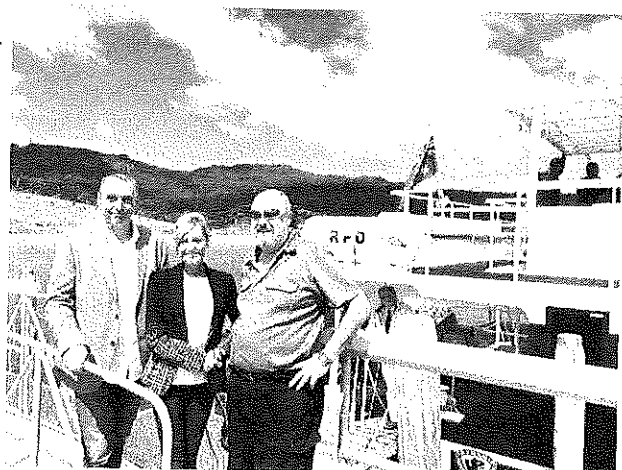
There is no doubt that the increased capacity and appeal of the Osprey V will assist with reaching these targets.

We have also committed \$1.8 million towards the Maria Island Re-discovered Project, which will deliver an improved visitor experience, a wider range of quality tourism products, and better infrastructure on this important tourism asset.

Conservation works and improving the access to the World Heritage buildings at Darlington will also be underway this summer.

I have been a long-time supporter of growing tourism to Maria Island, a jewel in the crown for our East Coast, and chaired a working group in 2015 that explored ways of realising its full potential.

Approximately 23,000 visitors travelled to Maria Island in 2016-17, and I am sure that the appeal of the island will continue to draw visitors to experience its natural beauty and historic significance.



East Coast Planning Forum

Hear from the Planning Matters Alliance Tasmania (PMAT) about how the
Liberal Government's proposed statewide planning reforms will affect
you and your business and your community.

At the planning forum you will hear from local experts and hear how the
reforms will affect your community.

Saturday 2nd December 2017 3pm - 5pm
Beachfront Conference Centre, Bicheno

Event contact:
Sophie 0407 501 999
sophie_underwood@hotmail.com



Photo: Kate Stevens

Why Planning Matters

Planning affects every land title in Tasmania – your home, your neighbour's house, your local shops, schools and parks. Planning shapes our cities, towns, coastal and rural landscapes, building strong, thriving, healthy sustainable communities.

PMAT is a growing network of nearly 50 community groups from across Tasmania, including 13 from the East Coast: Beaumaris Action Network, Freycinet Action Network, Friends of Four Mile Creek, Friends of the Blue Tier, North East Bioregional Network, Seymour Community Action Group, Earth Ocean Network (Bicheno), Swansea Group, The Tasmanian Wilderness Society, Let's Grow Tasmania's Future, Marine Protection Tasmania, St Helens Point Progress Association, and Bay of Fires Coastal Preservation Lobby.

To contact PMAT or to find out more visit
www.planningmatterstas.org.au

[facebook/planningmatterstas](https://facebook.com/planningmatterstas)

Talking Point: Billion-dollar loss shows forestry finances need overhaul

by JOHN LAWRENCE, Mercury

A SURVEY of the wreckage left behind by Forestry Tasmania reveals that since its peak in 2004 it has lost more than \$1 billion from forestry activities.

During that time cash outlays were \$440 million more than trading revenue and the value of the forest estate fell by more than \$600 million. Adding the two figures gives the aggregate loss over the last 13 years of \$1 billion, equal to \$40 for each tonne harvested.

Spending on plantations (\$106 million), property and plant (\$33 million) and roads (\$105 million) added nothing to FT's asset base. Together with the continual losses from forest harvesting it meant FT's cash losses totalled \$440 million over the last 13 years.

Then there are non-cash losses, often called book losses, principally the fall in the value of the forest estate. This has occurred because a lot of trees have been chopped down and sold and because as maintenance and harvest costs rise faster than prices for forest products the value of remaining forests falls. Over the last 13 years the value of FT's forests has fallen by more than \$600 million. Trees entrusted to FT are now worth a fraction of their former value.

So how did FT cover its cash losses? Governments have provided cash of \$331 million since 2004. Asset sales totalled a further \$165 million, notably \$78 million for the remaining 50 per cent interest in the state's softwood plantations and \$60 million from the recent plantation hardwood sale.

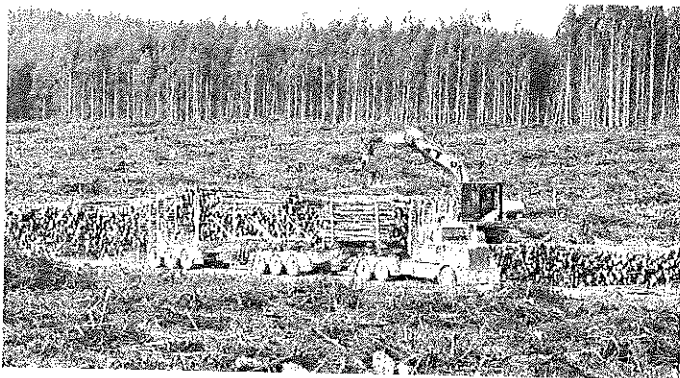
Total cash received, other than from ordinary trading, has therefore been \$496 million. That's a lot of money. The state "contributed" a further \$113 million by taking over the unfunded superannuation liabilities of past employees. FT was unable to set aside super for existing employees let alone the growing number of ex-

employees drawing pensions.

Without government backing FT was hopelessly insolvent. But being government-backed meant we missed the golden opportunity of Schumpeter's creative destruction whereby companies go broke and from the ashes a more viable industry may emerge.

For a government which said it would end public subsidies to FT, the Hodgman Government has provided \$161 million in three years.

Will the cash from the recent plantation sale be sufficient to launch FT on a new journey? Half will be needed to pay off debt from trading for the past two



years whilst the plantations were being sold. A further \$21 million received as a specific purpose grant but spent elsewhere will need to be found when the time comes to spend the amount as intended, for thinning plantations. There won't be much cash left to fund the future.

Recognising spending on roads and new plantations as immediate expenses is what the Auditor-General recommended in a draft report on FT's performance issued April 2009: "... without stronger financial performance, investment in roads and plantations over the past 15 years will not yield future benefits to Forestry and arguably should be expensed rather than capitalised. On that basis, it can be argued that ordinary operations from 1994 to 2008 have yielded little profit." Things went further downhill after then.

Yet FT kept saying spending on roads and plantations was helping to make its asset base more sustainable. The rationale was to establish plantations to gradually replace timber from native forests before the ever increasing costs of roads to harvest the increasingly remote native forests became obvious even to Blind Freddie.

FT and its political supporters responded to the impending train wreck with typical torpor. They did little more than blame others.

Forest revenue may have risen slightly in 2016-17 but increased harvesting and cartage costs quickly wiped out any gain. Revenue only rose because of woodchip exports which won't be sustained because over half the plantations have been sold.

The State Government now pretends selling plantation assets will form the basis for a sustainable future. It may not be a portent but in 2016-17 FT clearfelled 476ha of plantations but only 64ha proceeded to a second rotation and this was as a result of coppicing where stumps start sending out new shoots. Hope springs eternal. FT has struggled to simultaneously assess the financial and ecological sustainability of native forest operations. Spending on roads to harvest native forests should be expensed. Treating post-harvest make-good expenses as capital is misleading as they too should be expensed. Balance sheet losses which occur when trees are harvested or otherwise lose value are glossed over. Future harvest proceeds and hence forest values are overstated because the costs of roads to harvest the trees are excluded.

And when forests are valued as a whole to be then split between land, roads and trees, land is arbitrarily allocated a zero value. Few others regard native forest land as being worthless.

The crux of disagreement over native forestry relates to loss of value when forests are clearfelled. FT doesn't assign any value to its native forest land and hardly acknowledges the almost universal belief land loses value with clearfelling. FT's financials implicitly assume all value is with the trees. They grow again, so what's the problem?

If one was unsure whether trees still grow in a skyward direction one may consult a forester. But if one was trying to run a forest business, one wouldn't bother based on FT's past performance. Their reporting of profits is wrong. Their measures of financial sustainability are wrong. Their business models are wrong. In FT's case it was made even worse by imprudent long-term timber supply contracts.

There's no evidence the newly branded Sustainable Timbers Tasmania is any more sustainable than its predecessor FT. With reduced assets, its few remaining plantations are years away from positive cash flows and the inherent problems with native forest activities are far from being resolved.

John Lawrence is an economist and public policy analyst who lives on Tasmania's North-West Coast.

Break O'Day Recycling Service is almost here!

As of November 13, Break O'Day Council will begin the delivery of 4500 new waste bins in readiness for the start of a recycling service on December 4.

The new bins will be delivered with an information pack that will include; an introduction letter, a recycling sticker for their yellow lidded recycling bin, a brochure on what can and can't be recycled and a new schedule of collection covering the next three months. The full schedule can also be found on Council's website. A full yearly calendar will go out early in 2018.

"We understand that there is going to be an adjustment period for our community and we are trying to make the transition as easy as possible," Mayor Mick Tucker said.

"We have put some information up on our website and have some ads running on local radio station StarFm, and we will also use our Facebook page to remind residents for the first fortnight which day is their recycling collection day.

Although this is a big change, we really hope that the community will get behind the new service and if they are confused they can always give the office a call.

A recycling service is something that our community has been asking for, for some time and all of us at Council are pleased and proud this is finally happening and we can keep moving towards a more sustainable Break O'Day."

The Recycling collection has been split into a Week 1 and Week 2 schedule and all Break O'Day residents are urged to check the new schedule online or in the information pack, to make sure they understand which week their service will be on. The actual day that recycling is collected is the same day as residents' current waste collection, however some residents will be putting out their recycling on opposite weeks to their waste while others will be able to put both bins out on the same day.

For more information, please contact Break O'Day Council's Communications coordinator, Jayne Richardson on 6376 7900 or 0400 454 089



"Buffalo buffalo Buffalo buffalo buffalo buffalo Buffalo buffalo" is a grammatically correct sentence in American English, often presented as an example of how homonyms and homophones can be used to create complicated linguistic constructs through lexical ambiguity and the usage of homophony and homonymy. It has been discussed in literature in various forms since 1967, when it appeared in Dmitri Borgmann's *Beyond Language: Adventures in Word and Thought*.

The sentence employs three distinct meanings of the word *buffalo*:

as a proper noun to refer to a specific place named Buffalo, the city of Buffalo, New York being the most notable;

- as a verb (uncommon in regular usage) to *buffalo*, meaning "to bully, harass, or intimidate" or "to baffle"; and
- as a noun to refer to the animal, bison (often called *buffalo* in North America). The plural is also *buffalo*.

More easily decoded, though semantically equivalent, would be: *Buffalo from Buffalo whom other buffalo from Buffalo bully [themselves] bully buffalo from Buffalo.*

The Say, by Cagerattler

OOPS ... It is so weird. This politicians citizenship farce is just that. Like a lot of Federal political outcomes, where does common sense come into it?

As I understand the statute, in a nutshell, you can only be a citizen of Australia to stand for Federal Parliament, right?

This means anyone with dual citizenship is prohibited from becoming a MHR or Senator. Even if they were born and bred here, like Barnaby Joyce as an example, it then is determined by the status of either of his parents.

As Australia has a huge British heritage originally and an equally large multi cultural input since World War II that potentially could mean that a heck of a lot more incumbent pollies, previous pollies after 1949 could be challenged under the statutes in the constitution that is explained in Section 44 Allegiances to a Foreign Power.

Prior to 1949 there was no such requirement to renounce British

or other citizenship.

I have no issues with immigrants born elsewhere needing to renounce their previous citizenship should at some stage they wish to become parliamentarians, but if you were born in Australia, you should surely automatically be an Australian citizen first and foremost.

It's a legal minefield currently, and why was the High Court needed to make a decision?

It shouldn't be that hard. Born here, regardless of where your mum or dad was born, so long as they took out permanent resident status or indeed Australian citizenship is as simple as it needs to be. They aren't standing for parliament.

Why do they need to make it any harder than that?

Amend section 44, you mob, after all this is settled, to read that if you are born in Australia you assume a born right to be a citizen from the day of your birth onwards until you choose to re-

nounce that right.

That should only require a Declaration of Allegiance to the people of the Commonwealth of Australia under the Constitution, if you choose to try for election of the Federal Parliament and Senate. If you are indeed elected you need to swear an oath of allegiance anyway, as all these supposedly suspect politicians would have done already.

I wonder who this sits with, all levels of government?

Or does it only apply to Federal politics? That is probably different, and under different statutes, because it has not really been mentioned during this current situation.

I just hope for all concerned in this situation that it leads to easier, more straight forward amendments in the future, so it has more clarity and doesn't require weeks of deliberation by the High Court. What do you think?

Rod McGiveron, St Marys

Surf Coast Realty

Ph: (03) 6372 5321

Suite 1, 158 Scamander Ave.
Scamander Tas 7215

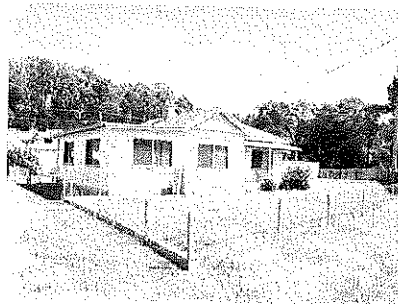
enquiries@surfcoastrealty.com.au
www.surfcoastrealty.com.au



**Elephant Pass Road
St Marys**

Looking to sell
your property?
Call Surf Coast Realty
on (03) 63725321
for an obligation
free appraisal.

NEW LISTING!!!



Spacious Home – 1 acre, two titles + creek

This property offers an abundance of space with a lovely creek running through the property. It sits in a central location only a short stroll to the main street and all St Marys facilities. The home is very spacious with three good sized bedrooms, a functional kitchen, dining room, separate lounge room, bathroom with a shower, bath and vanity and a separate toilet. The property consists of 4325m2 and is currently separated into two fully fenced sections. This one is definitely worth inspecting.

1 The Flat, St Marys

Price: \$189,000

Many thanks to Ruth McGiveron for allowing us to publish the following letter, written by George Tickle, a Cornwall resident of many years.

The letter was in the possession of Ruth's mother Mrs Olga Targett (nee Madden), born and raised in Cornwall. Olga, one of eight children, married Selby Targett and then lived in St Marys.

To the Residents of Cornwall
At public meeting held on the 20th inst.,
it was decided to proceed with erection of
a hall at estimated cost of £225. The size
of the hall will be 36 feet by 24 feet with a
stage 14 feet by 12 feet and two ante rooms
each 12 feet by 9 feet.

Already £30 is in hand towards the cost
of erection. At the Public meeting a
committee was elected for a fair to make
arrangements for a fair to be held
at an early date.

Three of the committee will shortly call
at every house on Cornwall to find out
how many will give a donation of about
one shilling per party for 25 paise and
collectors will be appointed to collect
promptly each fortnight.

By Tickle
chairman per JCP

Cornwall Hall, 2006



Cornwall Hall, 2015



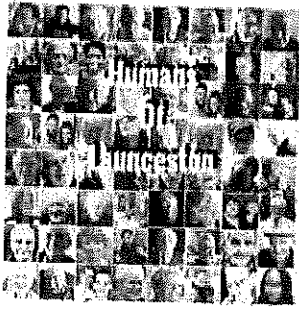
Libraries (Closed public holidays)



61 Cecilia Street **St Helens**
6387 5600
Monday to Friday 10am - 5pm
Sat 10am - 12pm

31 Main Street **St Marys**
6372 2114
Mon, Wed & Fri 12.30 - 4pm
Tue & Thurs
10am - 12.45pm

Fingal FVNH
Talbot Street 6374 2344
Mon, Wed & Fri 9am - 4pm
Tue & Thurs 9am - 12pm



Humans of Launceston ~ ~ Lisa

"I was a bit of a surprise as my parents thought they were through with their parenting duties but 11 years after my brother, Wayne, I was born, the youngest of five children for parents Rita and Terry Ellis. My other siblings are Yvonne, Dot and Tony. There are only three of us now as both Tony and Dot have passed away".

"I grew up in Arthur Street and went to East Launceston Primary School and then onto Queechy High. Dad was an abattoir worker at Killafaddy Meatworks.

He drove the carcasses around to butchers and delis. Mum worked at Coats Patons and was the cleaner at the Crown Hotel. I was a bit of a handful as a teenager so it's fair to say Mum and Dad had their work cut out with me.

Once I left school I worked for Coles in the Mall in the takeaway, another iconic business no longer here. Once I married my first husband, we travelled around Australia in a kombi van for two years. We came back as I was pregnant with our son Josh and I wanted to have and raise him in Tassie.

Josh was always a live wire, only stop and go buttons! He had Asperger's Syndrome so he was always very full on. He was also the kindest, most empathetic person you could meet, but did have his major difficulties growing up both socially and during education, but naturally, I adored him and supported him.

My marriage ended and after I separated, I started dating a man named Duane and we became a couple and married in 1992. At our wedding, Josh gave me away and it was a beautiful day despite the torrential rain.

We were married at Swanwick Golf Club in the original clubroom which burnt to the ground a few years later. We lived in Legana at that time but our current home at West Launceston seemed like it was meant to be.

My sister owned it but felt unable to remain there after the sudden death of her husband but did not wish it to go to a stranger as they had built it themselves and many special memories were there.

Duane and I were looking for a new home as our property at Legana had become subject to landslip and after an expensive and heartbreaking attempt to save it we had to admit defeat and sell the land back to the council at a loss. We have been in our home now for about 15 years and it is my happy place, my safety zone with so many more memories added.

Duane and I have two beautiful daughters together, Alara, who is now 19, and Carly, who is 18.

After a problematic adolescence, Josh was in a really good place by the time he turned 18. Then, out of nowhere, life switched completely for all of us.

Driving home from Hobart with three of his mates, Josh had a car accident in Margate and was killed instantly. His three friends came out with a few injuries but Josh was gone.

We were shattered and life changed forever for us that day.



Our wedding



Josh

My daughters were aged nine and ten when Josh died and it was a very sad time in our lives and I have to say, life has never been the same since. I naturally went into the dark depths of grieving and it was an extremely traumatic period for myself and my family.

After losing my boy, I felt as though there weren't enough appropriate bereavement support services for grieving parents, so I decided to start my own.

In 2014, I started Bittersweet Parents. Named for one of Josh's favourite songs by the band Apocalyptica and also for its literal meaning "both pleasant and painful or regretful, a bittersweet memory".

It is a Facebook page for parents who have lost a child. It is a closed group and there are now over 400 members internationally and it has been such a positive support network for not only myself but for so many others.

Our members consist of parents who have miscarried right through to parents who have lost adult children through suicide, accidents or illness, any cause, any age.

We hold local gatherings here in Launceston every three months, informal drinks and chat days. We fund-raised to install a park bench at Arbour Park in West Launceston and also now, with the help from the Lions Club City of Launceston we are about to install a bench at Newstead Reserve. These provide a place to reflect for those who do not have a memorial place to go to.



At the Pink Run with my fabulous Mum

The next project is Rally for Rhys-Bittersweet High Tea to provide a memorial tribute for siblings as they often slip through the cracks while everyone is focused on the parents. There is also Bittersweet Siblings and Bittersweet Grandparents now.

Last year I was diagnosed with breast cancer. So that's been a challenge. It was very aggressive. They told me there are five treatments available and that I was to have all five.

Surgery (which removed the cancer), chemotherapy, radiation, Herceptin infusions and ongoing hormone treatment but I had to really be sure it wouldn't return.

Hence the full array of treatments. I have to say the Holman Clinic here is awesome.

I made a pact with myself that I would not only beat the cancer, but come out of it fitter than when I went in. And so far, I have, thanks to the massive support from MyGym and taking up running. I finish the treatments in November then the ongoing hormone treatment for the next five to ten years. There is the possibility of more surgery to come for my own peace of mind and that of my family.

Through having cancer, I have been lucky enough to be involved with many great organisations like Breast Cancer Network Aust and Cancer Council and I do the fun runs. I took up running to get fitter and it was hard at first but I have improved my fitness level greatly.

I ran in the 5km Pink fun run with my youngest daughter Carly and was honoured that my 87 year old mum walked the whole 5kms with my eldest sister Yvonne in honour of my cancer battle. It was such a fantastic thing. My mum is such an amazing woman. (See photo in top of comments)

We are so proud of our girls. Carly is a second-year apprentice cabinet maker at Toledo Furniture and has just come second in the World Skills Cabinet Making regional competitions last weekend. And Alara is studying to be a paramedic down in Hobart. I miss her terribly.

I have a weakness for animals, especially cats, and love taking on rehabilitated ferals to give them a new start in life. I tend to fall for the most difficult ones though, quite the glutton for punishment. I should avoid Just Cats at all costs to save myself.

Thank goodness our kelpie, Cara, is a big soft touch as she is sorely outnumbered!

Duane and I have been together for 25 years, married for 20 and Duane was Josh's father figure from the time he was two.

Part of my healing process associated with Josh's death, is speaking about it with people who also understand. Some of my friends had a lot of difficulty dealing with it and tried to avoid the subject, they are now really only acquaintances so therefore I was at a loss as to who I could speak with about my grief.

Thankfully I am blessed with my best friend, Di, who has always been my rock, even going bald with me last year when my hair fell out! Have decided I like my now grey hair.

Communication and support are the two major factors people need when dealing with grief. I just want to help as many people as I can deal with their loss because I get it. I live it too.

Everything is divided into before and after the moment your child died. Don't sweat that small shit. Life is too short. I see everything brighter these days.

Losing something so dear to you makes you see life differently. My family are the most important thing in the world to me. Nothing else matters. They are my world".



Duane and I with Alara and Carly.

ARTISANS @ Stables Market

3.30pm – 6.30pm on Friday 17 November 2017

St Marys Sports & Recreation Ground via Harefield Rd

Pete Cornelius will be performing two 45 minute sets

ARTISANS @ Stables Market is a showcase of high quality Tasmanian Artisan Products and is a fantastic opportunity to wander around the markets, enjoy the entertainment and some lovely food.

Come along and browse the high quality handmade and home produced items, from plants, food and wine through to crafts, jewellery and fine art.

There is free overnight camping within walking distance to the Markets if you wish to stay after the markets and enjoy the ambience of the Fingal Valley and East Coast for the weekend or longer.

For further information please contact thestablesmarkettas@gmail.com

www.facebook.com/thestablesandmademarket



3 DAY SILENT MEDITATION RETREAT

Wednesday - Monday

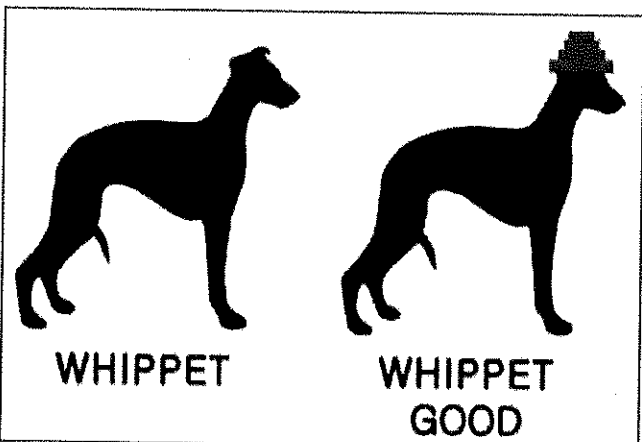
19th, 20th, 21st Nov 2017

VORTEX HEALING CENTRE INC

www.vortexhealingcentre.com/3day

\$175

Mobile 0448.516.488
215 Dalmaine Road
Elephant Pass, TAS 7215







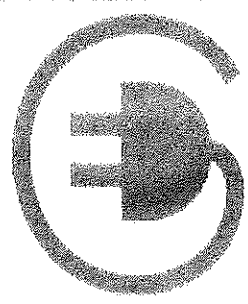
NICK SHAW 0439-414-299

**Coastal Heat Pumps
& Solar**

Lic no. L076081
Lic no. A4155228

Specialising in both Domestic and Commercial projects
Tax deductible for business
Tier 1 supplier, for the best quality solar systems
1 kW - 100 kW systems available
Call us today for a FREE SOLAR QUOTE
Already have a quote?
WE'LL BEAT IT BY 5 %

Install one of our leading brands of
Heat Pumps today and stay WARM this WINTER
while still staying COOL in SUMMER.
-Floor mounted-
-Wall mounted-
-Fully Ducted systems
-up to 18kW




St. Helens Electrical

Rod Shaw 0407-615-072
Nick Shaw 0439-414-299

24798 Tasman Highway
St. Helens, Tas. 7216

Email:
sth.electrical@gmail.com



Domestic, Commercial, Industrial
New houses, wiring and repairs
Underground mains supply

Lighting Specialist
Interior and Exterior
Advice, sales, and installation

Heat Pump/Heater Installations
Supply and install all brands
Floor, Wall, Ducted
Advice on all home heating

Solar Installation
Domestic and business
1kW to 100kW

Call for a free quote

Electrical Contractors
Servicing the East Coast from Pyengana down Coles Bay
and through the Fingal Valley
Lic: 933671

365
tomorrows

Brakes, Scars, and Other Things I Miss

Author : Jae Miles,

Funny how the roar of wind fades into the background after a while.

I loved the wind roar in my rag-top coupe. Drove that antique everywhere, pretty much spent my late teens in it, met the love of my life while driving it, and waved her goodbye from it, too. Which was fitting, as its weak brakes scared her. As trivial irritations do, the fright led to arguments that revealed bigger things; things the passion we shared couldn't overcome.

A rogue booster rocket cuts a jagged turquoise line across the violet sky.

Ah, war wounds. The scars that proved you had been at the sharp end, and on the receiving end of it, too. NanoHeal sorted that out. Bonded to your DNA profile, it restored you to how you should be.

Which was great, except for the first time. While sorting your wounds, it dealt with all the other stuff: tattoos, piercings, and every other blemish, inside or out. I can't even get a tan. We asked if it could be programmed to exclude trophy marks like they programmed it to ignore cyberware. They replied: "That wouldn't be cost effective."

In eerie silence, a burning chunk about the size of a small mansion tumbles past, shedding random bits along with burnt stick figures.

Something I'm glad I missed; being on the impact side of the station when we all discovered the Euripides was a ghost ship, her crew slain by supralight shock. Usually, that happens on entry to supralight and the ship never re-emerges. Occurrence on exit is rare and can be problematical. Supralight craft are at least the size of old Earth cruise ships. If nobody realises the problem in time and gets an emergency crew aboard, there's going to be a big mess. In this case, the Euripides emerged closer than expected on a heading that bisected the heart of Plusidra Station. The impact hurled me through the environment field on a loading bay and here I am, imparted sufficient momentum to make orbit impossible, now freefalling

from as high as you can get. Yet, I'm still glad I wasn't on the impact side. I'm sure that was a moment of pain and fear no-one should have to endure, however briefly.

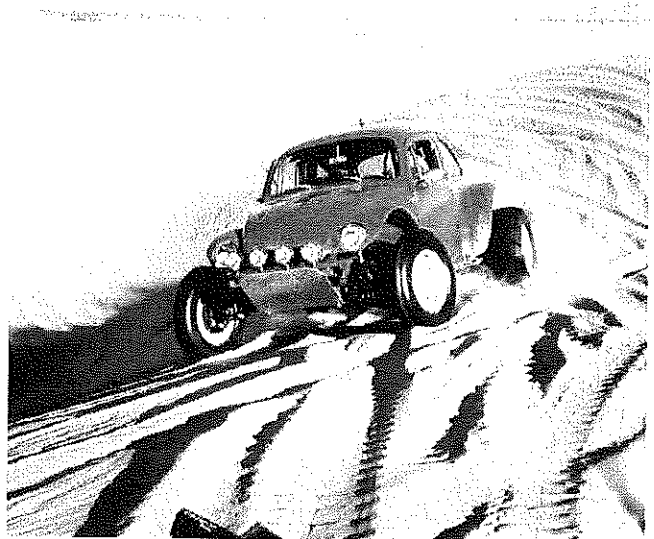
By sheer luck, my selection of cyberware means I'm not blind, liable to suffocate or pass out. I get to enjoy this ride all the way to the multicoloured desert below, where I expect to die and be buried in a spectacular spray of rainbow-hued crystals.

I can think of worse ways to go. The views are superb and the contrasts of debris against sky are quite awesome, their terrible import only enhancing the beauty.

Just in case browsing disaster investigators haven't already guessed: this is my final diary post.

My name is Jedry Strong.

Her name was Kelly Frea-something. I hope she's happy, out there, somewhere. For the first time ever, I'm with her on wishing for better brakes.



We're moving!



New Address

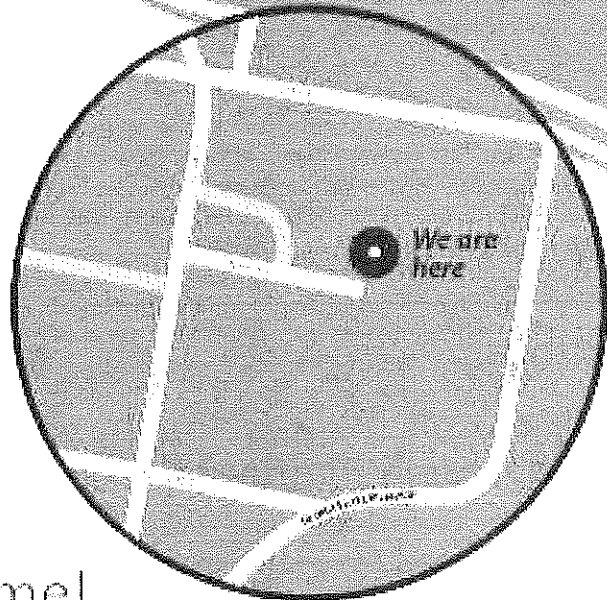
11 Pendrigh Place
ST HELENS TAS 7216

P 03 6376 1777

F 03 6376 1888

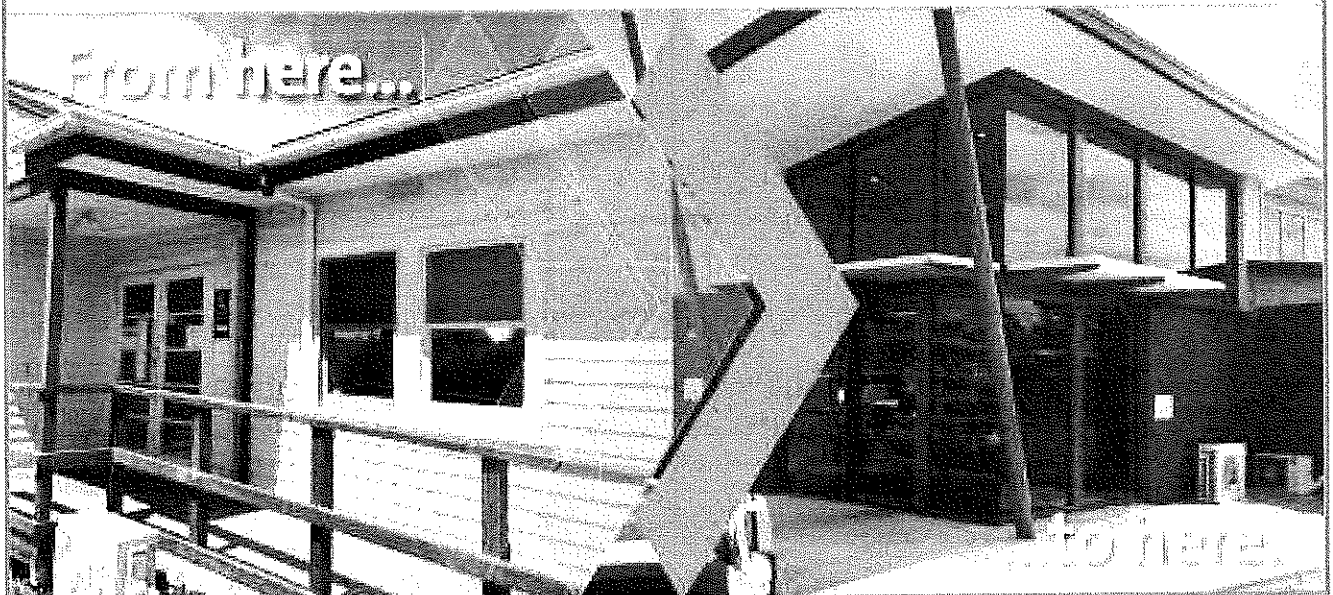
Book online at:
ochrehealth.com.au

New Patients Welcome!



Ochre Medical Centre St Helens is moving from its existing location at 5 Portland Court to the current premises of the St Helens General Practice at 11 Pendrigh Place.

With modern purpose-built facilities, ample on-site parking, longer opening hours and more practitioners to choose from, there's no better time to make Ochre your choice for all things health related.



The BETOOTA ADVOCATE

Ashby's Refusal To Drive Battler Bus Without High Beams Loses Crucial Truckie Vote

CLANCY OVERELL | Editor

One Nation's timid flyer printer turned political advisor turned 'battler bus' driver, James Ashby, has today revealed that he's not comfortable taking the high beams off – even when an incoming truck is approaching.

As Pauline Hanson makes her delayed entry to the Queensland election campaign this weekend, a new poll shows support for One Nation surging. Recent polls shows that Pauline Hanson and her party of unchecked xenophobic candidates are pulling upwards of 20% in its regional heartland.

The One Nation leader will take her "battler bus" on tour to regional areas where support for the protest party is concentrated, with James Ashby as

driver.

However, despite Senator Hanson's plan to shift \$1.4b worth of returns from state government-owned corporations into electricity price subsidies for households, countering a Labor offer to cut \$50 from Queenslanders' power bills, the party has already lost the truckie vote.

"Stuff the lot of them" says local truckie, Royce. "That little collared shirt idiot nearly caused me to roll my rig with four dogs on the back."

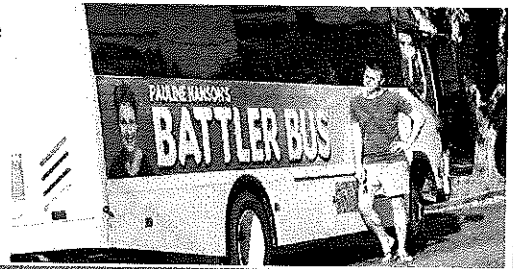
It seems that, despite stern words from Pauline advising Ashby to act like a bushie on the roads, he has refused to play ball.

"It's scary" he says. "I don't feel comfortable"

Ashby seems convinced that the truckie vote is one that One Nation can afford to lose.

"Who cares about them. They are always honking at me and being jerks"

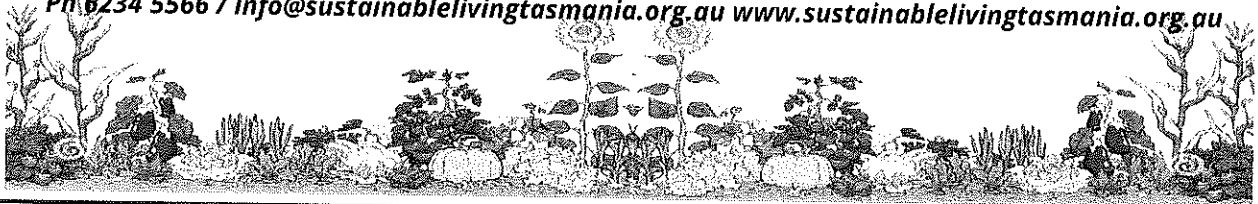
"I plan to make this party an intelligent right-wing superpower. We don't need these crass unskilled labourers"



Tasmania Planting Guide for November / December

Lettuce, cabbages, broccoli, parsley and parsely root, silverbeet, beetroot, spring onions, leeks, English spinach, kohlrabi, celery, parsnip, Brussels sprouts, Asian brassicas, pumpkin, kale, sweetcorn, tomato, zucchini, summer carrots, cucumber, melons, French, bush and climbing beans.

Ph 6234 5566 / info@sustainablelivingtasmania.org.au www.sustainablelivingtasmania.org.au



LJ Hooker



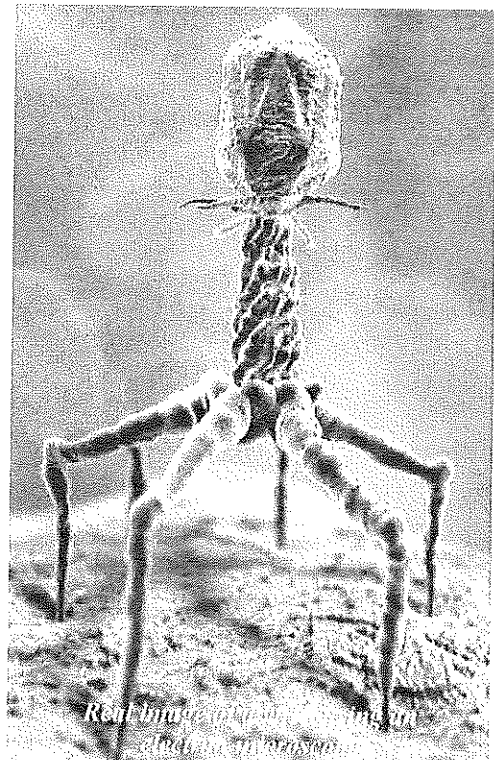
Kate Walsh

Your local area specialist in St Marys and Scamander. For an obligation free market appraisal please contact Kate Walsh from LJ Hooker St Helens.

Ph: (03) 6376 2300

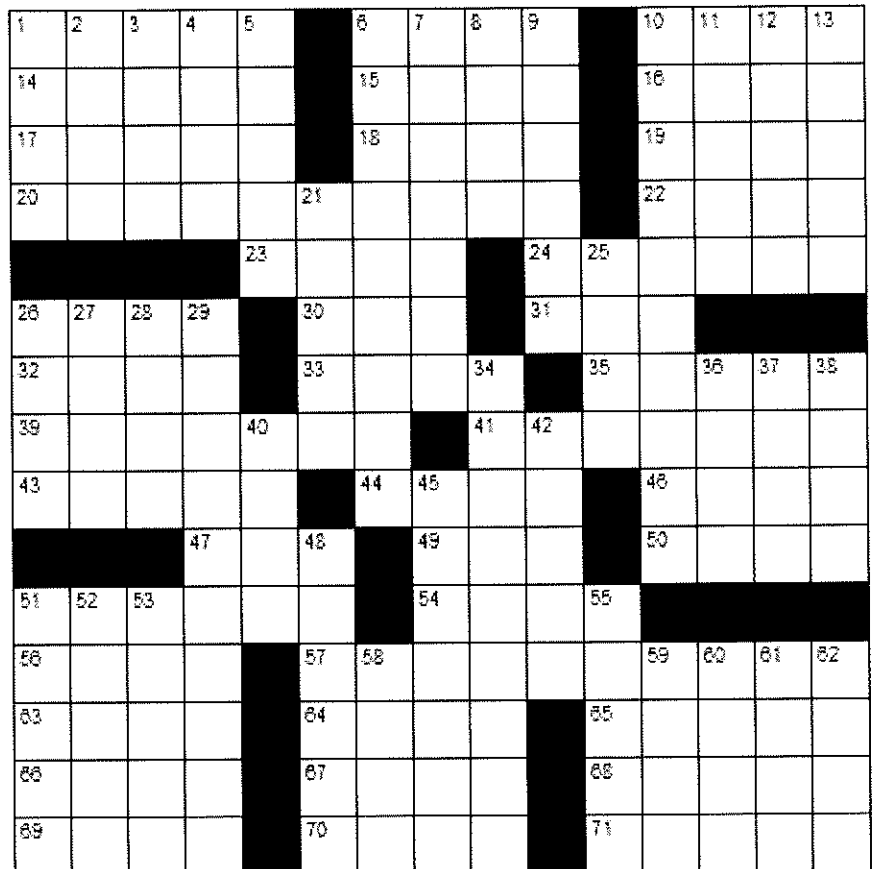
Mobile: 0419 683 904

Email: kwash.sthelens@llh.com.au



ACROSS

1. Allow
6. Outbuilding
10. Among
14. Radiolocation
15. Tropical tuber
16. Arrived
17. Large Asian country
18. Peel
19. Jacket
20. Defaced
22. Desire
23. Chunk
24. Less difficult
26. Jump
30. French for "Friend"
31. Ribonucleic acid
32. Skilled
33. A climbing plant
35. Practical
39. Gatekeeper
41. A medieval steel helmet
43. Colonic
44. Wildebeests
46. Ear-related
47. European peak
49. Type
50. Snack
51. Bathhouse
54. Decay from overripening
56. Monster
57. Driven by lust
63. Thug
64. Doing nothing
65. Dried coconut meat
66. Relating to urine
67. Adolescent
68. Peel
69. Rational
70. Where the sun rises
71. Feel



DOWN

1. Electrical or cross-word
2. Hindu princess
3. Contributes
4. Childlike
5. Path
6. Playing a guitar
7. A 180-degree turn of a road
8. Sea eagle
9. Totter
10. Blame
11. New Zealand native
12. Picture
13. Discourage
21. Exotic jelly flavor
25. Rectum
26. Stow, as cargo
27. Black, in poetry
28. Balm ingredient
29. Imperishability
34. Exuberant
36. Within
37. Wreaths
38. Carve in stone
40. French Sudan
42. Requested
45. Small bites
48. Respectful
51. Phony
52. Ancient Greek marketplace
53. Loins
55. Check marks
58. Notion
59. Not a single one
60. Not closed
61. Website addresses
62. An exchange involving money

Solution on p29

The Antenna Guy

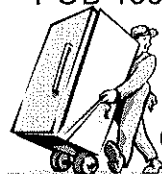
- Antennas
- VAST (free to air by satellite)
- TV tuning
- Home entertainment setup
- All areas serviced
- Get clear reception anywhere!



Call Josh 0408 388 322 / 6377 1150

Ransley's Appliance Service

POB 136 Scamander Tasmania 7215



*Washing machine noisy?
Refrigerator runs too long?
Clothes dryer blows cold air?*

then you need the services of our technicians

6372 5307 / 0428 761 811

St Marys Community Health Centre
Gardiners Creek Rd St Marys Tasmania 7215
6387 5555

GP Surgery Hours
Monday - Friday

8:50 - 10am
(10 - 10:30am Reception closed)
10:30am - 12:30pm
(1 - 1:30pm Reception closed)
1:30 - 3:00pm
(3 - 3:30pm Reception closed)
3 - 4:30pm

Pathology Service – Bloods

There is no pathology service prior to 8.30am.
If you require pathology prior to 8.30am i.e. urgent blood test and / or a fasting test, an appointment must be made at the Nurses' Station the day / evening before on 6387 5555

Pathology hours are 8.30 - 11am and 2 - 4pm, Monday-Friday

Scripts and Doctors' Appointments

Please ensure doctors' appointments are booked **PRIOR** to your medications running out, or **IN ADVANCE** if you attend this practice regularly.

Please be patient Waiting periods to see your doctor may be experienced. We are not able to issue scripts during the weekends, please ensure you have enough in advance. Please be aware we are not able to issue scripts by phone.

St Marys Medical Practice reminder

Dr Latt wished to remind the community of the following exceptions to bulk billing at the SMCHC:

Driving licence renewals	Insurance medicals
Requested medical reports	Harness medicals
	Pre-employment checks

These are NOT covered by Medicare, and may incur costs. Please discuss this with reception when booking. If you have any concerns, please contact us and we will try and address them

SMCHC Teaching Site

We are a UTAS teaching site
We regularly host students from various health faculties, who attend our site to participate in training placement.

If you are attending this practice and would prefer the students do not sit in on your consultation, please inform reception prior to your appointment. These placements are very important for the students, so your cooperation is greatly appreciated.

Doctors' Roster

Dr C Latt

16/11/17– 1/12/17

Dr K Nash-Rawnsley

17/11, 21/11, 24/11, 28/11 & 1/12 2017

Waiting area at the Health Centre

The waiting area for **ALL** services at the St Marys Community Health Centre is in the reception area.

Please report to reception upon arrival and the consultant you are here to see will be informed, and they will come and collect you from this area.

Non-attendance of Doctors' appointments

Please be aware there is a non attendance policy at this practice. If you miss three appointments you will be sent an account. If you miss a fourth appointment you may be referred to another Medical Practice.

Due to demand, doctors' appointments need to be booked at least **two weeks in advance**.

Waiting periods can apply.

A.H. contact numbers

GP Assist	1300 780 011
Ambulance or Emergency	1800 008 008 000
Lifeline - Saving lives, crisis support and suicide prevention	13 11 14
St Marys Community Health Centre - please ring before presenting after hours	6387 5555

INR tests require a 5 minute doctors' consultation.
Please inform reception when booking

Are your details up to date?

Do you have a new address / phone number? Do you have a new Centrelink / Medicare card? Have you updated these details with us?

Sometimes we need to contact you, or pass your details on to other health professionals.

You may also be charged for some medical services if your Centrelink / Medicare cards are not current

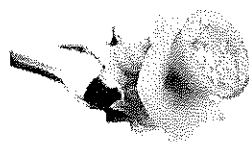
If any of your details have changed, please contact us on 6387 5555 or call in and see our friendly reception staff for assistance

St Marys Community Health Centre
Gardiners Creek Rd St Marys Tasmania 7215
6387 5555

What's on at the Centre

- November 17 **Social Worker** Shan Williams for appts
please phone 6387 5555
- November 20 **Occupational Therapist** Danyelle Briggs by
referral from your Health Professional
Max Employment 8:30am-5pm downstairs
- November 21 **Occupational Therapist** Danyelle Briggs by
referral from your Health Professional
Child Health Session with Mary Mumford
Tuesday fortnights, by appt only.
Ph 0428 136 381
- Anglicare 1:30pm-3:30pm downstairs
St John Podiatry Ph 6376 2971 for bookings
and fee enquiries
***TLC Meeting** 5pm in the Day Room. Please
note this meeting is on a Tuesday this
month NOT Monday
- November 22 **Day Centre** Ph Hayley Gilbert on 6387 5555
for information on the group
- November 23 **Social Worker** Shan Williams
Ph 6387 5555 for appts
2nd Bite Delivery
- November 24 **Social Worker** Shan Williams
Ph 6387 5555 for appts
- November 27 **Occupational Therapist** Danyelle Briggs by
referral from your Health Professional
- November 28 **Podiatry North** For appts please
ph 6336 5155
- November 29 **Day Centre** Ph Hayley Gilbert on 6387 5555
for information on the group
Social Worker Shan Williams
Ph 6387 5555 for appts
TAZREACH Antenatal Clinic with Katie,
contact GP for appts
Rae & Partners Lawyers consult fortnightly
at the SMCHC. Ph 6337 5555 for appts
- November 30 **2nd Bite Delivery**
Social Worker Shan Williams
Ph 6387 5555 for appts
- December 1 **Social Worker** Shan Williams
Ph 6387 5555 for appts

*Information on this page supplied by St Marys
Community Health Centre, Gardiners Creek Rd
St Marys Tasmania 7215*



**Healthy
Eating**

MEALS ON WHEELS



Do you know you don't just
have to be elderly or sick to
receive meals on wheels?

You can also select from a 3 course down
to a one course meal.

You don't even have to get them every day ...
you decide when and how often

Are you interested or have further questions?

Call Alana at the St Marys Health Centre on
6387 5555 and see if you are eligible, or to
discuss your options.

Home style meals are made on site at the
Health Centre daily.

Pick-up and delivery available.

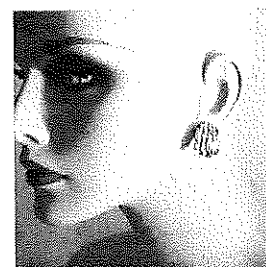
St Marys Meals on Wheels cover from
Scamander to Bicheno and as far as Fingal
and surrounding areas.

St Marys
PHARMACY

Main Street St Marys
Ph 6372 2844

Kodak prints from 45¢

Ear piercing \$27
includes earrings
and solution
with qualified
staff Bec, Sally
and Cassie



***Pharmacist instore
Monday to Friday***

199 words of 3 letters or more were found in

OPERATION

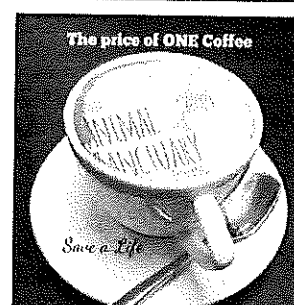
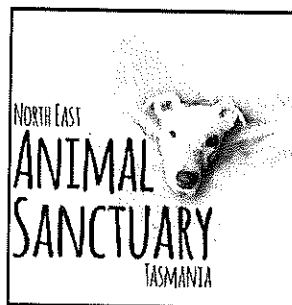


air	operant	pit	
ant	operation	pita	
ante	operon	piton	
ape	opiate	poet	
aper	opine	point	roan
apron	opt	pointer	roe
apt	option	poor	root
apter	orate	pore	rope
are	oration	porn	rot
art	ore	port	rote
ate	orient	porte	tan
atone	ornate	portion	tap
atoner	otarine	pot	tape
atop	pain	potion	taper
atropine	paint	prate	tapir
ear	painter	preon	tar
earn	pair	pretan	tare
eat	pan	print	tarn
entrap	pane	prion	taro
eon	pant	pronate	tarp
era	panter	prone	tea
eta	par	protean	tear
inept	pare	protein	ten
inert	parent	proton	tenor
inter	part	pterin	tern
into	parti	rain	terp
ion	pat	ran	tie
iota	pate	rant	tier
irate	pater	rap	tin
ire	patio	rape	tine
iron	patron	rapt	tinea
nap	pea	rat	tip
nape	pear	rate	tire
neap	peat	ratio	toe
near	pen	ration	ton
neat	pent	reap	tone
net	peon	rein	toner
nip	per	rent	too
nit	pert	repaint	toonie
nitro	pertain	repin	top
nope	pet	repo	tore
nor	piano	repoint	torn
norite	pie	repot	toro
not	pier	retain	train
note	pieta	retap	trap
oar	pin	retina	trio
oat	pine	riot	trip
one	pint	rip	tripe
onto	pinto	ripe	troop
open	pion	ripen	trope
opera	pirate	rite	

How many words of three letters or more can you find in
PREVENTION? Answer next edition

A psychologist is selling a video that teaches
you how to test your dog's IQ.

Here's how it works: if you spend \$12.99 for the
video, your dog is smarter than you.



Sally and Louie had their vet checks to-day and in a nutshell ...

Sally (above) is approx 12 years old, has 'dry eye' which we're treating at present and a touch of arthritis, which is no surprise given her age.

Blood work was great for her age, she's quite healthy and active, and she's been declared in pretty good nick for her vintage! Lovely natured with strangers, and great with cats and dogs. We are taking expressions of interest for the lovely Sally now.



Louie is approx 11 years old, and has a heart murmur, a touch of arthritis and a few lumps and bumps - just fatty lipomas, generally nothing to worry about.

Like Sally, great with strangers, cats and dogs and his bloodwork also came back really good, and also healthy, active and in great nick.

We are also taking expressions of interest in the dear Louie too!

If you're interested in meeting these cuties, please let us know

ADOPT, DON'T SHOP

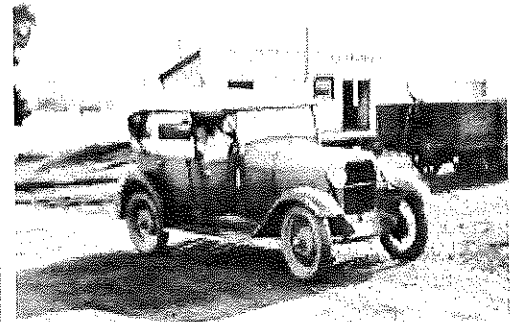
michelle.jesson@bigpond.com 0457 081 533

Tasmania Way Back When

<https://www.facebook.com/tastime/photos/>



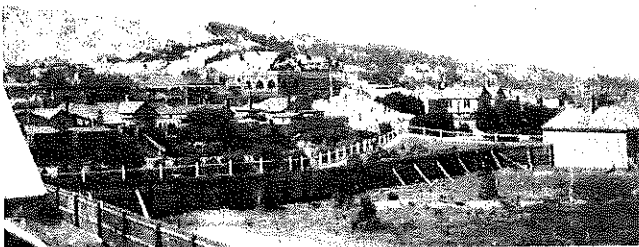
Story Street, St Marys with Hotel, Todds Hall and Newsagency 1890



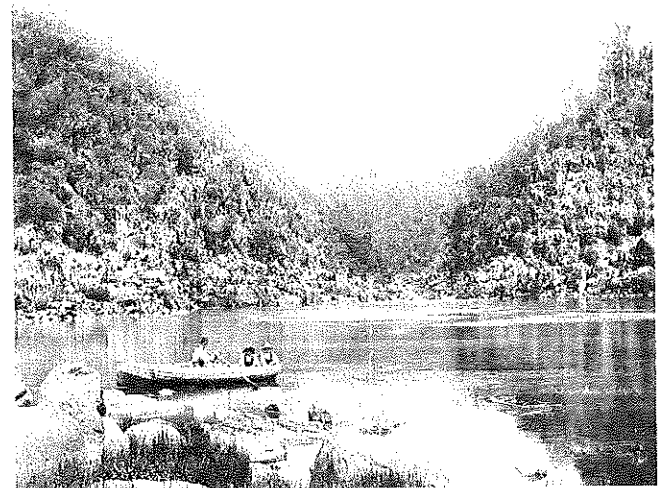
Cullenswood Rail Station, 1955



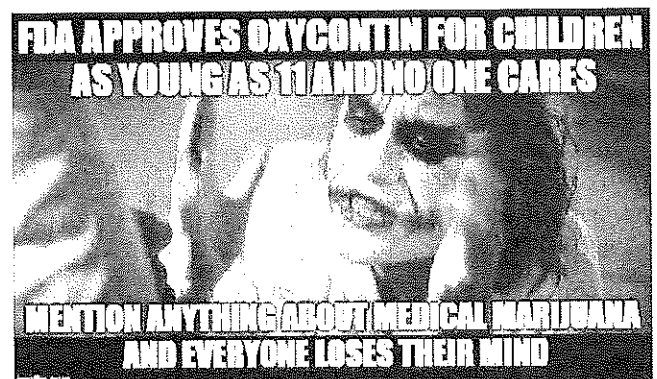
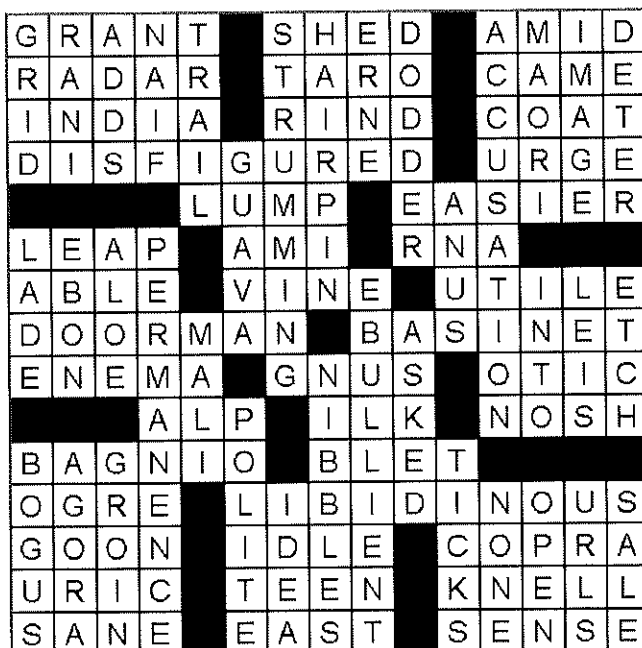
Meander area, 1910



Queenstown, 1923



First Basin, Cataract Gorge Launceston. December 1894





St Marys IGA Supermarket

38 Main Street 6372 2240

Butcher instore weekdays 8am - 2.30pm
6372 2274

Monday - Friday 7.30am - 7pm

Saturday 8am - 7pm Sunday 9am - 7pm



Butchery specials November 15 - 21

p/kg

Boneless Pork Roast	11.99
Corned Silverside	8.99
Round Steak	12.99
Nichols Chicken Breast Schnitzels	12.99
Nichols Chicken Kiev Burgers	11.99

Butchery specials November 22 - 28

p/kg

Rump Steak	17.99
Lamb BBQ Chops	12.99
Topside Beef Roast	12.99
Nichols Six Legged Chickens	4.99
Ingham Breast Fillets	9.99

Two week specials November 15 - 28

Pacific West Flathead Fillets 360g	5.99 save 4.86	Lynx Body Spray 100g	2.99 save 3.01
Miracle Margarine Spread 500g	1.49 save 66c	Trix Dishwashing Liquid 1lit	1.49 save 1.50
Sunsilk Shampoo or Conditioner 200ml	2.39 save 2.40	Continental pasta and Sauce 145-170g	1.99 save 1.00
Sorbent Toilet Paper 8pk	3.97 save 3.98	Greens Cake Mixes 400-475g	1.99 save 76c
Cold Power Laundry Powder 900g	5.99 save 4.01	Moccona Coffee 200g	9.99 save 10.00

St Marys Sports Centre Inc. Gray Road St Marys

Thursday 5pm onwards. Friday 5pm until close, includes Happy Hour 6.30 - 7.30pm. Raffles, Lucky Members Draw, Pick a Pen, toasted sandwiches on sale. Saturday 12 until close (this time may vary). Sunday 1pm until close.

Bowls news Saturday 11, Swansea def St Marys at Swansea. East Coast Trebles - Sunday 12th two teams played at Bicheno against Bicheno, Swansea and Scamander. Congratulations Johnny Mac, Trev and Macca!! You live another day. Good luck on Sunday 19th when you play off in the first semi. Bowls at St Marys on Saturday 18th.

Golf news Golf is played each Sunday at 1pm. There are whispers a Friday night Chicken Run may kick off now as evenings are getting better. Until then, good putting.

General news The much talked about DISHWASHER has been installed. Application for Temporary Food Vending Licence to allow us to conduct the BBQ for Community Christmas Party has been completed.

Reminder: Chad Morgan Show tickets (for December 17) are on sale at the Centre - \$20. Christmas Raffle tickets are on sale at various shops. Great prizes!! **Friday December 22** - Centre's Christmas Breakup and Raffle draw will commence 5pm. A BBQ with salads will be available. **Clive Berwick Memorial Day Bowls** December 27. Still some vacant spots. Big meal, big raffles, big prizes. This day has been well organised by the committee already, big thank you to Drew Berwick for your cooperation.

The Valley and East Coast Voice Inc. is available at the following outlets:

Avoca Post Office	Holder Bros Fingal
Coach House Restaurant	Mathinna Post Office
St Marys	Scamander S/market
The Farm Shed, Bicheno	St Marys IGA
Hilly's IGA St Helens	St Marys Newsagency
Hilly's IGA St Marys	

Shower Thoughts: It's almost as if Hugh Hefner was projecting a force-field that protected creepy famous men, and with his death they were suddenly exposed.

Printed and published by
The Valley and East Coast
Voice Inc.
POB 230
St Marys Tasmania 7215.

