



# *The Valley & East Coast Voice*

*Est. 1968*

*Volume 43 No. 13. Thursday November 18, 2010.*

*50 cents*

## **Remembrance Day 2010**

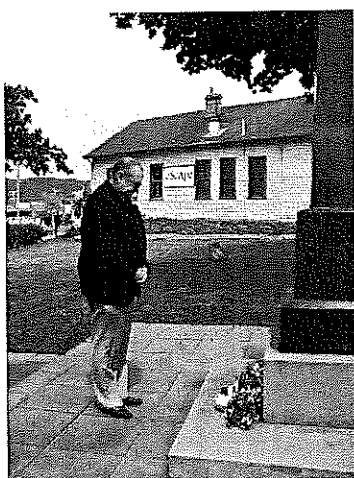
In Flanders fields the poppies blow  
Between the crosses, row on row  
That mark our place; and in the sky  
The larks, still bravely singing, fly  
Scarce heard amid the guns below.

We are the dead. Short days ago  
We lived, felt dawn, saw sunset glow,  
Loved and were loved, and now we lie  
In Flanders Fields.

Take up your quarrel with the foe;  
To you, from failing hands, we throw  
The torch; be yours to hold it high.  
If ye break faith with us who die  
We shall not sleep, though poppies grow  
In Flanders fields

**We will remember them**

Thank you to The St Mary's Memorial Association,  
Ted Koops for the acoustics and the Targett family  
for the Last Post by the late Selby Targett.



*Photos courtesy Wendy Brennan.*



**IMPORTANT POST OFFICE NEWS CONCERNING OVERSEAS MAIL INSIDE THIS ISSUE...**

**Please note: Deadline for articles in the next Valley Voice is 5pm Tuesday November 30, 2010**  
**EMAIL ADDRESS: [judith.spilsbury@telair.com.au](mailto:judith.spilsbury@telair.com.au)**

## Community news

**St Marys Hospital Auxiliary** meets the first Monday of every month at 2pm at the St Marys Community Health Centre.

**The Break O'Day Woodcraft Guild Inc.** meets for meetings the last Saturday of the month at 2pm at the goods shed behind the St Marys Railway Station.

**The Tasmanian Lymphoedema Centre Inc.,** holds meetings every 3rd Monday of the month at 10 am at the St Marys Community Health Centre, Day Care room.

**St Marys Ladies Midweek Tennis** 9.30am each wed. Need new players - of any standard-beginners welcome-childminding included - lovely safe place to bring toddlers while you play. **Ring Annette-6372 2224.**

**St Marys Playgroup** meets each Monday 10.30am - 12 noon at the **Falmouth Community Centre**, during school terms. \$2 a session per child or \$3 per family. Please bring a piece of fruit to share and your child's personal drink bottle. Bikes plus helmets welcome. **Phone or text: Danyelle: 0427 073 100.**

**WOMBAT WALK LANDSCAPING GROUP** meet every Wednesday 9am to 12 Noon (weather permitting) at St Marys Musical Playground area to plant and maintain the rivulet park and flower bank - anyone interested in joining us - please come along and meet our group. **Contact - Robina 6372 2022.**

**St Patricks Head & Esk Valley Historical Society Inc** has a meeting one month and a field trip the next. We invite everyone to come along on the third Sunday of the month and enjoy an informative time with lots of fun. For more information **Phone: Barry Aulich (637225752) Darlene Wright (63722416) or Jim Haas (63722127)**

**Break O'Day Wine & Food Appreciation Society** meets once a month on the last Sunday.  
**Ph: John 6376 3130.**

**The Scamander and Beaumaris Community Development Association** meets at 7 pm at the Scamander Sports Complex every third Wednesday of the month. New members are most welcome.

**The Falmouth Community centre** would like to advise members and the community that the new contact for bookings of club facilities is Rachel Woods. Rachel can be contacted on: **03 6372 5118.**

**Suncoast Singers** meet every Friday at 10am in the Catholic Hall - Cecilia Street St Helens. New singers always welcome.....If you can yawn - you can sing. **Phone Mary-Anne Wadsworth 6376 2969.**

**The Friends of the History Room** hold General Meetings: 8th February, 10th May, 12th July --AGM, 11th October. Executive Meetings: 9th March, 14th June, 9th August 13th September, and 8th November. All held at Tidal Waters at 5pm.

**Break O'Day Regional Arts -** General meetings held on the first Wednesday of each month at 5.30pm in the supper room at the back of the St Marys Hall. All welcome. **Inquiries to Colin 6372 2707 or Janet 6372 2851.**

### CHRISTMAS IN ST MARYS 2010 THE ST MARYS LIONS CLUB WILL ONCE AGAIN BE HOLDING THEIR ANNUAL CHRISTMAS PARTY AND PARADEON FRIDAY 24TH DECEMBER 2010.



3PM PARTY STARTS  
4PM SANTA ARRIVES  
5PM PARADE

(ASSEMBLE IN NEWMAN STREET)

THEN IMMEDIATELY AFTER THE  
As our ~~club members are drawn~~ young as they used to be and active Club members have reduced a little this year we are looking for volunteers to assist with this great function.

**We need assistance with the following:**

**BBQ helpers**

**Entrants for the Parade (Please tell Harry at the Post Office if you intend to take part)**

**Parade organisers**

**Traffic controllers for the Parade**

**Ticket Sellers**

**Many hands make light work**

**John Mc Givern, Secretary**

**Phone: 63722 234**

**Remedial Massage and Naturopathy**

**ring Sue Christiansen for an appointment.**

**0418 515 419**

**Do you need help with English grammar, spelling, sentence structure etc?**

**Proofreading assignments / documents?**

**Qualified ESL teacher and proof reader available. Ph. 6372 2078 or 0402 089 846.**

**Meditation Classes**

**Friday 10.30 am**

**Info call Sue: 0418 515 419.**

**St Helens Alcoholics Anonymous (AA)** Wednesday 8pm Weekly. St Pauls Anglican Church Hall, St Helens. Murdoch 6376 3335.

**St Marys Alcoholics Anonymous (AA)** Friday 8pm Weekly. Holy Trinity Rod 6372 2851.

**St Helens Al-Anon Family Group (Al Anon)** To help families and friends of alcoholics recover from the effects of living with the problem Anglican Church Hall.

Main St, St Marys. drinking of someone close.

Sunday 2pm Weekly. St Pauls Anglican Church Hall,

St Helens. Ann or John 6376 3270 Rose 6376 3335.

Classifieds in the Valley Voice are free of charge. If your articles are not sold after the first entry, we will repeat the ad in the next issue. Please let us know if items are sold. Every effort will be made to have correct details and phone numbers. However if there is a mistake, it will be corrected in the following issue.

## Classifieds

### For sale

**Cygnnet Folk Festival – 2 tickets for 14-16<sup>th</sup> Jan 2011.** \$165 for both. Ph – 6372 2686.

**Toyota Starlet** - 1998 5-speed manual, a/c, CD player, exc. condition, great first car \$4000. Ph: 6372 2686.

**Tiller/Cultivator** - Mantis brand, as new, only used 10hrs, better than rotary hoe, use in vege/ornamental gardens, 21cc, 2-stroke, light-weight, very manoeuvrable, comes with extra blades, manual. Cost \$870, sell \$670. Ph: 6372 2686.

**Wood, ½ green.** \$70 per ton. Ph: 0408 596 142.

**2003 VY HSV Red Maloo Ute.** 90,000 kms. Electric tray & rear spoiler, 6 stacker CD player, brand new tyres and rims. Great Condition. \$34,000. Ph: 0438 849 462.

**5 piece dining suite.** \$60. **Single bed & bedhead.** \$40. **Chest of drawers.** \$25. **Pine bedside table.** \$15. **3 seater couch.** \$35. **Queen size mattress,** near new. \$40. **38cm Sanyo TV.** \$20. Ph: 6372 2552 or 0428 362 958.

**Lovely older style double bed,** blackwood slatted ends iron rail, wooden slat base with brand new innerspring double mattress. \$250. **Club lounge suite,** dark green with detailing, quality castors, low seater, blackwood cup rests. Needs new cushion covers on couch. \$200. **Older style oak hall stand,** round mirror and storage box. \$150. Ph: 6372 2489.

**2002 Harley Davidson,** black, XLH model, 1200cc Evo Sportster. Windshield, driving lights, oil cooler, forward controls & screaming eagle exhausts. Excellent condition. 61,000 kms. Used exclusively as a long distance cruiser. \$11,000. ono. **"First Gear" motor cycle wet weather gear.** As new – top of the range. Completely water & wind proof. Suit person 183cm. \$250. ono. **1977 Nissan Patrol.** 3 speed, 6 cylinder petrol motor. Unregistered but continually used off-road. Full bar work, roof rack & tow hitch. An ideal "Farm Hack". \$1,500. **Heavy duty steel trailer.** 7ft x 4ft 3". Spare H/D axle, spare H/D leaf spring & spare wheel, all attached to trailer. \$1,500. Ph: Don—0429 396 918.

**Telescope** on tripod with accessories. \$80. **3 stack portable CD player.** \$30. **Dimplex evaporator cooler.** \$90. **Suzuki DS80 motorbike.** Recon. \$700. **Zodiac 12 Hoover** front loader washing machine. Goes well. \$100. Ph: 6374 2282.

**Wardrobe.** \$50. **Enamel bath.** \$50. **Cast iron bath.** \$50. **Half roll (approx) barbed wire.** \$40. **Fence palings (approx 40)** \$25. **Window,** wooden 89 x 52. \$40. **Old style wooden wardrobe.** \$80. **Pajero cargo barrier.** \$30 Ph: 6372 2365.

**Peugeot 206XR** - 2003, 4 door hatch, metallic red, 112,000km, new tyres/brake pads, reg, serviced, CD player, A/C, auto windows, etc. Great condition, reluctant sale. \$7,990 neg. Ph: Leissa 6372 2686.

**3 GARAGES SALES PAGE 11...**

### For sale

**'95 Falcon future automatic** 4 speed cruise control, ABS airbag, electric windows. A1 condition, goes extremely well. New exhaust, good tyres. 5 months rego. \$3,990. ono Ph: 6372 2446 or 6374 1058.

**Garden mulch,** in big round bales. (wheat straw, weed free) \$60 a bale, delivered free in St Marys area. Ph: 0407 944 158.

**Tractor slashing available.** Ph: 0407 944 158.

**Portable milling available.** Ph: 0427 715 577.

**"Moo-Poo".** Finely screened. Any quantity. See Norm. Ph: 6372 2380.

WANTED - EMPTY POT PLANT POTS .. ANY SIZE..  
IF YOU NO LONGER NEED THEM, THIS MAD  
KEEN GARDENER WILL APPRECIATE THEM ..  
PLEASE PHONE 6372 2818  
(will compensate for cost of call)  
WITH THANKS

WANTED  
WHEELBARROW IN GOOD CONDITION.  
Ph: 0408 175 031.

## For Sale:

50 acre bush block between St Helens and Beaumaris on the N.E Coast of Tas, just off the Tasman Hwy, 3mins drive to beach, 6kms to St Helens. We have council approval for two houses, sheds and nursery, the block also comes with a caravan and bus setup for occupation, combustion stove, solar power, water tanks, chook shed, 20ft shipping container and a 60hp Massey Fergusson front end loader/backhoe. We are looking at around \$235,000 but will consider offers, OR WE ARE OPEN TO POSSIBILITY OF HALF SHARE!!!

0438 434 697 [cuberson2@bigpond.com](mailto:cuberson2@bigpond.com)

To Give Away To Good Home  
TB Bay Brood Mare  
Ph: Bruce 6372 2181

URGENTLY REQUIRED  
LONG TERM LEASE SOUGHT.  
PHONE JAN: 0421 319 586

Found  
a pair of vintage earrings in St Marys.  
Please call Wendy or Reon  
on 6372 2094.

Variety of dolls for sale.  
Ph: 6372 2373.

## A LITTLE BIT OF HERITAGE: Jim Haas

### "The disaster of the Fingal Line Special"

The 29<sup>th</sup> June 1886 was to be a great day of celebration, and so it was. But no one was to know the close of the day would see a disaster that would take the lives of two good men and injure a number of others. This was the day of the official opening of the Fingal Rail Line from The Corners (Conara) to St Marys.

Early that morning a special train left Hobart carrying a large number of politicians, Hobart aldermen and other guests of the Tasmanian Railways Department to witness the opening of the Fingal Rail Line and to be the passengers on the first train to run through to St Marys. Everything went well, there was rejoicing all round with plenty of hand shaking, clapping, speeches and back slapping, complemented with ample food and drink. Indeed a good time was had by all; then came the return journey.

The driver of the train, John Bradshaw, son of a miller at Oatlands, was said to be a very experienced driver and not known for taking risks. Joe Rodgers, his firemen and Harry Bryce his guard were also believed to be extremely competent in their work.

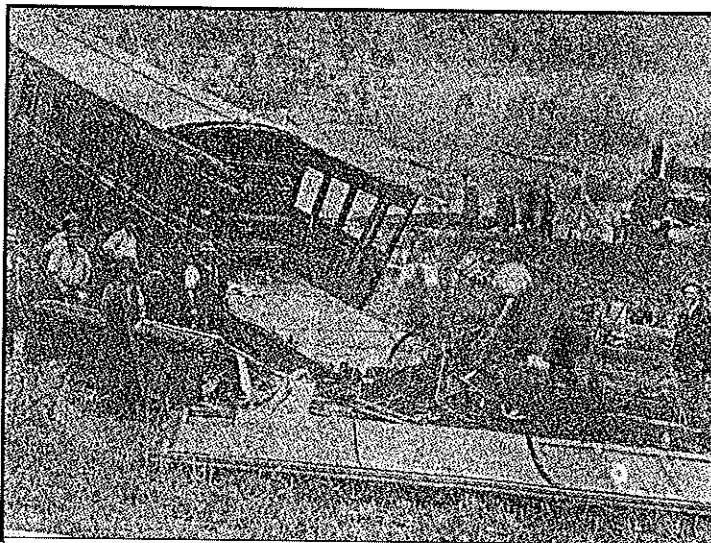
However, as the train travelled down from The Corners towards Rhyndaston and on to Campania, it appears Bradshaw was driving above the train's normal speed. At Campania, guard Bryce warned Bradshaw about his speed and told him if he did not slow down he would cause an accident. But Bradshaw only laughed and said everything was alright.

After leaving Campania and negotiating what was known as the "Horseshoe Bend" Bradshaw apparently allowed the train to pick up speed and by the time they reached Rekuna it was moving at a very fast pace. The fireman had listened to the guard's warning and admitted later that he had become frightened at the speed at which the train was travelling. As the train sped through Tea Tree the fireman argued with Bradshaw when approaching a sharp curve at some 40 miles per hour and told him to shut off the steam and immediately reduce speed. Bradshaw took no notice and it would seem the fireman panicked, which resulted in him applying the brakes himself. The action of the brakes locked the driving wheels and gave a rigid binding effect to the locomotive.

With wheels skidding, the locomotive ran into a long ring curve, now known as Bradshaw's Curve, about two miles north of Brighton. But the speed, along with the locked brakes, caused the locomotive to leave the rails and topple over against an embankment knocking off the steam dome on the boiler. The resulting explosion blew the dome several hundred feet into the scrub, shattering the engine and wiping out ten panels of fencing.

Both the driver and firemen were thrown out of the cab and the tender fell on top of them. Bradshaw was extensively crushed and died instantly. Rogers on the other hand was pinned down with one leg almost severed and died in hospital two day later. Before he died he admitted that the accident was most likely caused by him applying the brakes as the train sped into the curve.

The train consisted of a short and long carriage followed by a guard's van. At the point of impact the long carriage



*The wrecked carriages of the ill fated  
Fingal Line Special in 1886.*

ploughed into the short carriage causing both to run off the rails on the opposite side to the locomotive. Both carriages were completely wrecked.

The accident happened just before midnight, but it was several hours before police and rescuers arrived in a relief train. Almost all the passengers on the special train, as well as guard Bryce, sustained injuries, but none were life threatening and all made full recoveries.

Tasmanian Railways also recovered and went on to be the major transporter of goods and people for the next ten decades.

The economic impact it had on towns like St Marys is immeasurable.

## Are you ready for more digital TV channels?



**The Australian Government has established  
the Antenna Installer Endorsement Scheme  
for antenna installers.**

**An endorsed antenna installer can install or  
upgrade your antenna for the reception of  
free-to-air digital television.**

**Extra digital TV channels will soon be available in your area.**



**Contact your local antenna installer who has been endorsed  
under the Australian Government Antenna Installer  
Endorsement Scheme. For more information about  
upgrading your antenna for digital TV ask:**

**David Morris**

**Government Approved Antenna Installer No. 2316**

mobile: 0402 969 393 email: david@delafrontera.com.au

## Letters to the Editor

Vol. 43 No 13, 2010

I totally agree with Beverley Rubenach's profile of the new Break O'Day General Manager Mr Des Jennings.

Not only is he approachable and professional, he follows through with any concerns you may have.

He personally came to the Woodcraft Guild to observe our set up and meet members which we found most encouraging.

The Guild's new lease had certain components which we found hard to decipher. We raised these concerns with Mr Jennings who sent a representative from Council to fully explain the terms and conditions, making sure that all members had full comprehension of the circumstances.

How lucky we are to have someone so dedicated who believes and values residents and the small community groups that make the Break O'Day a great place to live.

It is so refreshing to not be considered just "another tedious interruption".

A warm welcome Mr Jennings.  
Wendy Brennan, Secretary,  
Break O'Day Woodcraft Guild,  
St Marys.

In answer to Cagerattler in the Valley Voice about St Marys Police Station never being open, I agree. They only open when they feel like it.

Yes we need a Service Tasmania office here at St Marys. At least you could rely on that to be opened five days a week.

Isn't it a shame also registered mainland vehicles are supposed to be put off-road classed unregistered. I can't see anyone else's being pulled up and put off-road lately. No, only one particular person's vehicle has.

Also licences; certain person was waiting on his licence to come back, had receipt but still got charged for not having his licence back—a few days later it was in the mail. Police still charged him.

So beware all mainland drivers, you'll be next. Ha! Don't make me laugh. It's only one person they target here in St Marys.

Doreen Jones,  
St Marys.

Reply to Cagerattler's questions

Question: Reversing into traffic without full view.

Take extreme care and open eyes. Which is what you are supposed to do when driving. If angle is too scary for you, park on other side of road. Even though you, (the Cagerattler), seem to park on the angle parking side. Why is this, when you protest so much about it.

Question: When did I mention reverse parking in the article.

Everyone knows if you can park in a parallel parking bay in one go, when there is one parking bay between two cars, without reversing to fit in, (unless you are on a bike etc.), then you should win an award.

Question: Rude to businesses.

You mention businesses impinging on the walk space. You will find that there are not as much wares on the walkway as other towns and cities. Again I state, there will be more wares on the walkways if trees are planted, for trees will block the line of sight.

Here's some suggestions... If you want to make St Marys Main Street a prettier place, why not resurface the sidewalk so people do not trip or fall down holes that appear in the concrete. Just by re-doing that, it would make a big difference. And a few more bins wouldn't go astray.

As I suggested over a couple of years ago, bring the kerb in 2 to 3 feet towards the shops, then there is more than enough room to reverse out before you are on the road. It is not as though the sidewalk isn't wide enough to do this.

Also, public toilets at the corner of Main Street and Cameron Street. Visitors every day get upset when you tell them the toilets are up the road behind the library. I know it would cost a huge amount of money to do this.

So why not install bigger signs that people can read in both directions: e.g. Public toilets 700 metres, then Public toilets 500 metres etc.

If you are so hell bent on making St Marys a better place, (which I find is great the way it is) why didn't you go to the meeting last Thursday night at the town hall. If you were there and I didn't see you, I do apologise.

I will wait with baited breath for you to pick apart my view on things.

Kim Watkins.

To  
The Mayor,  
Break O'Day Council  
Georges Bay Road,  
St Helens 7216

From  
Charles Trollope  
"Kindred Spirits"  
461 Gardiners creek Road,  
St Marys 7215

8th November 2010

Dear Mr Mayor,

Your response to my letter failed to answer five out of the six questions that I requested. Perhaps you found some difficulty in understanding them fully. Please allow me to help you to do so as we are talking here about a very important subject, namely **the ancient and inherited rights of the people without which we would be living in a dictatorship!**

This matter of "**Fee Simple**" which is of the greatest concern to our **constitutional freedom** and which was the main thrust of my letter was **ignored** in three out of my six questions. Mr Mayor, what are you playing at? Maybe you don't think that the rights and freedoms of the people are important, but let me assure you that the citizens of this municipality expect a lot better from a person holding your position of power and accountability.

"**Fee Simple**" has been a major factor in property freehold documentation for hundreds of years and I fail to understand how you forgot that it was a valid and essential component that is found on freehold title deeds everywhere in this, so far, democratic country.

Please allow me to help you to understand its etymology for future reference.

The legal description of **Fee** is "**A right in law to the use of land**" and "**Simple**", in the unconstrained sense". Most dictionaries define it as being "**Total Ownership**" and a law dictionary that I had access to, described it as "**Absolute Possession**". So you see, Mr Mayor, the people want to know how your "**Local Government Act**" fits in with "**Fee Simple**" with all of the restrictive and dictatorial practices of the former and I am telling you that **it does not!!!**

Here is my question.

**Will you and the Break O'Day Council recognise, uphold and adhere to "Fee Simple" as described so unmistakably in every dictionary as "Total Ownership of Freehold Land" with all that this implies?**

The people require a definite and straight answer, not a lot of waffle.

Will you please answer **YES** or **NO**.

I await your reply in the next issue of this paper.

Regards,

Charles Trollope.

**SHOP LOCALLY AND SAVE.**



## Letters to the Editor

Vol. 43 No 13 2010

To the editor of the "Valley Voice",

I was very interested in the questions Mr Trollope asked of the Mayor and councillors, since I am a property owner who, according to the title certificate, holds that property in fee simple.

It is very disappointing that the Mayor did not provide answers. I urge anybody with an interest in their rights under the constitution and common law, to look up the local government act of 1993 that the Mayor refers to, and see how those rights have been eroded.

In section 20A. Powers of entry, our local council has been given greater power than even the police force. These drastic changes have never been supported by the people and as the Mayor so rightly points out again, the giving of greater power to and recognition of local government in the constitution was rejected by the people in the referendum of 1988. I am looking forward to a full explanation of the council's position on these important points in future editions of this paper.

Kind regards,  
Knut Lewandowski,  
Binalong Bay.

In response to the letters written by Charles Trollope to the Break O'Day Council & Mayor Legge's reply. Vol.43, No12.

It is a bit confusing upon reading both of these letters as to what the real issues are.

In Charles's letter he posed quite a few driving questions to the Break O'Day Council concerning the rights of the people. I believe the two most important points he made with those questions should be of concern to all Australians.

1. The question of whether or not the Local Government act of 1993 is legitimate since it was passed without the vote of the people is certainly worth a look. 2. Whether or not, under this Act, the local government recognizes the people's rights concerning Fee Simple. This one could be of concern to anyone wanting to undertake a project or wanting to make improvements to the property they own.

In the Mayors response, it seemed he was a bit confused as well, since he didn't seem to answer either of these questions (much less all the other questions Charles put forth.)

The Mayor's opening, rather defensive statement, "The question of the legitimacy of the Break O'Day council does not require substantiation", made me raise an eyebrow! Maybe question #3 should be... why not? The mayor seemed to waffle on a bit defending the Break O'Day Council and managed to avoid the questions that were being asked completely. Perhaps he should try again.

Michelle Ball,  
St. Helens.

Letter to the editor,

How disappointed I was last fortnight (on Thurs 4th Nov.) when I attended the Alzheimer's/ Dementia Art Exhibition Opening Morning Tea held in the foyer of the Community Health Centre.

Disappointed. Why? Because my daughter Katy and I were the only ones there!!

If I was disappointed I can just imagine how disappointed Hayley and the Chef were. In a town of over 600 people, why were we the only ones to attend?

I'm sure excuses quickly come to your mind as to why you didn't attend, and most will be justified, but the ones saying, "I didn't know", "It wasn't advertised", "I couldn't be bothered", are all the same people complaining that nothing happens in this town!

I'm sure if any of you organised anything big or small, you would want people to attend. Well why don't you start by attending events put on by others.

We are a great community, which makes it all the more disappointing when the efforts of others are ignored.

Shame, shame, shame.

Well done Hayley, your effort was appreciated by us and the art work was inspirational.

Also well done to Break O'Day Regional Arts for all the events they provided over that weekend.

Kelly Farrell,  
St Marys.

Letter to the editor,

Mayor and councillors,

Why won't you answer the questions relating to "Fee Simple"?

We feel the answers are both NECESSARY and REVELANT to all land owners.

Do you not know the answers, or are you worried the community will learn the truth?

Ignoring this will not make it go away.

Kelly & Rod Bond.

With reference to the two letters printed in the last issue of this paper, Vol 43 No.12, 2010, it was with much interest that I read the letter from Mr. Trollope and the Mayor's reply also together with the publication of the Council's Newsletter, "Sunrise" Summer 2009 in regards to signage.

Being a Private Property owner, I have been concerned as to the 'rights' of Private Property owners and the Laws regarding trespass, Fee Simple and Fee Absolute. Of course these three issues are multifarious and I feel that clarification is required, especially as to the Big Picture and into the future.

Is Council saying 'by omission', that the Council by-laws, the Planning Scheme and the provisions of LUPAA take precedence/or rather supersedes the Legal Document issued by the Lands Title Office? Are our Title Deeds only an indication and not a stipulation in regards to our rights and the operation of the Laws of this State?

Patti O'Donnell.

St. Marys.

## REMEDIAL MASSAGE

**Geoff Coasby (CSM.CRM.)**

15 years extensive experience treating professional sports people including AFL footballers, triathletes, swimmers and everyday people who are suffering from muscular problems.

Qualified Treatment for:

Low Back Pain

Shoulder Pain

Neck Pain

Tennis Elbow

Hamstring and Calf Problems

Headaches

**Call 6374 2325 for appointments.**

any time,  
including holidays and weekends.

## The Say Cagerattler.

Has anyone else notice how many rabbits are around at the moment? They're all over the place. Queensland has the Cane Toad. We have the rabbit. As pets they are great but in the wild they cause a lot of trouble. Equally though, some of the solutions are pretty horrible. As much as I hate seeing rabbits everywhere, the methods such as calicivirus, baiting and mixo are less than perfect ways to do it. I suppose the most humane ways to do it is shooting or strict trapping done by people licenced to do it.

Whatever you do though causes inherent risks for other natural wildlife and straying family pets if they come too close to traps or baits. Perhaps in one small way feral cats are useful here when they prey on the odd bunny here and there. Once again though there is another problem. Feral Cats cause all sorts of damage to a wide range of other wildlife and it's good to see that soon cat owners are to be expected to meet certain requirements involving registrations and neutering not dissimilar to that of dog owners. Over time this should help limit so many stray cats that have no natural enemy out in the bush.

Pet ownership comes with great responsibilities and with cats soon to fit into this category I for one will be pleased to see the change and I do have a cat as it happens along with my mutts.

Back to the rabbits. Are there any solutions other than those above? I bet there aren't because if there was someone would have thought of it. Perhaps the Fox Task Force method might be used whereby a group of rabbit (and feral cats) experts were put in charge of this ever growing problem. Who knows, they might even find some. Only joking...

Thanks to the couple of people over the past fortnight who commented favourably on a future St Marys Craft Fair. It was nice to hear. Whilst on that I'm sorry to "Bob" that it appeared incorrectly where the Spitfire and Mustang were located. I do know my aircraft but during a re-write I jumbled up the information. Great news though is that I believe the Mustang has gone to it's new home and that the Spitfire is really at Cranks and Tinkerers for a little while. Go and check it out. You won't be disappointed.

What do you think ?

---

## DELIBERATIONS

*Charles Trollope*

The taxation system is a jumbled mess. It is cumbersome, hard to understand, inefficient and totally unfair! So what can be done to correct these faults? Well, we are always hearing calls for tax reform from all quarters and every time that "improvements" are made, it becomes a lot worse. But there is a system that promises a much fairer method to get the finance for running the country, which has been overlooked for a very long time, its called **"THE DEBIT TAX"** also known as **"The Robin Hood Tax"**.

A National Debit Tax would work automatically by deducting 1% electronically every time that money was moved from a bank account, so you will see that this fits in brilliantly with modern banking methods, and who wouldn't like to only pay \$1 in every \$100 taken out of their bank account as their **Total Contribution?**

With the movement of money on local or international money markets 1% would be directed into Federal Reserves automatically. With modern computer systems, there is nothing simpler than to set them up to automatically deduct the 1% every time a transaction is made and pass it instantaneously to the government. The amount of your money that is gambled on the Stock Exchange and other money markets is enormous.

The sum collected would quite easily replace:-

**Income Tax, GST, Fuel Excise, Capital Gains Tax, Payroll Tax, Land Tax, Stamp Duty and Property Rates** and still leave a **huge surplus!!!**

This surplus could fund **Free Tertiary Education**, provide **Efficient Health Care for Everyone**, Substantially **Increase Pensions**, **Help** considerably towards **Parenthood**, **Double Education Spending** and **Finance** badly needed **Infrastructure**.

It would bring in a **Golden Age of Prosperity**, a **"Renaissance"** and make us the envy of the world as a truly **Lucky Country**.

With a lot more money to spend, a lot of marginal businesses could be saved from bankruptcy and this would help the farmers who are in most cases doing it tough, as well as other businesses.

Up till now, taxation has always been on goods and services, so that the "movers and shakers" were always able to get away with not paying their own share. Are we to allow this to carry on? If you want a **"Fair Go"** which is what Australia is supposed to be all about, perhaps a few words in the ears of the politicians, telling them that if they want your vote that they have to work towards the implementation of this wonderful move forward. Ultimately, the voters hold the power for change!

**Lets make it happen!!!**

Two Irishmen were standing at the base of a flagpole, looking up. A blonde walked by and asked them what they were doing.

Paddy replied, 'We're supposed to be finding the \*%\*?# height of this flagpole, but we don't have a \*%\*?# ladder.'

The blonde took out an adjustable spanner from her bag, loosened a few bolts and laid the flagpole down.

She got a tape measure out of her pocket, took a few measurements, and announced that it was 18 feet 6 inches. Then, she walked off.

Mick said to Paddy, 'Isn't that just like a blonde! ..We need the \*%\*?# height and she gives us the \*%\*?# length.'

## POST OFFICE NEWS

We have just received advice from Australia Post that the maximum dimensions for Christmas cards being sent overseas are as follows:

**Length:** 240mm  
**Width:** 130mm  
**Thickness** 5mm  
**Weight:** 20grams

Any cards exceeding these dimensions will be processed as Large Letters which will attract extra postage and may have extra charges levied at the receiving end.

In addition the minimum dimensions for overseas Christmas cards have been set at 138mm (L) by 88mm (W). Overseas postal authorities have advised that any cards under these dimensions may not be processed for delivery. Accordingly, while large cards may be impressive and small cards cute, they may attract additional charges or not be delivered at all.

Harry & Kerry  
St Marys Licensed Post Office

### OUT OF THE WOODWORK

**Wendy Brennan, Secretary**  
**0408 656 014 Home: 6372 2094**

Well St Marys was again graced by the athletic prowess of the **Northern Vets Cycling Club**. It is a pleasure for the Guild to sponsor this worthwhile cause, "The St Marys Classic 2010", as we believe it promotes good health and wellbeing. We congratulate the winners who will be given full recognition next issue.

The Guild delivered finished wooden Christmas trees to the St Marys Day Care Centre. We hope that they provide hours of enjoyment with decorating and painting. Thank you to our clever member **Col Mackenzie** whose attention to detail made sure they were as realistic as possible.

As Christmas is vastly approaching a unanimous decision was made at our last meeting to hold our annual Christmas party at the Club's venue on **the 18<sup>th</sup> of December**.

Other important dates are the **5<sup>th</sup> December**, our planned trip to Cranbrook craft fair and an invitation from Bridport Woodworkers to their annual event on the **13<sup>th</sup> February**.

A survey of marketeer stall holders stated that they would prefer to have a venue where they were not reliant on the weather. Therefore, the Guild has decided to still complement the current markets and have a **market in the St Marys Hall on the third Saturday of every month**. We ask that stall holders who would like a table for outside please give us **adequate notice** before the day as tables have to be brought up from the Guild's shed.

**The same criteria will apply: Cost \$10.00 per site. This covers your membership to the Guild (As an ordinary member)**

**Please ring Wendy or Reon 63722 094.**

The Guild meets on the last Saturday of the month at the Old Railway Goods Shed at **2.00 pm**. The Guild is open Monday, Wednesday, Friday and Saturday. Any other times by appointment.

**A supportive environment where traditional woodcraft skills are shared**

## MUSIC TUITION



**ELECTRIC GUITAR**  
**ACOUSTIC GUITAR**  
**BASS GUITAR**  
**DRUMS**

**Any Style, Beginners to Advanced**  
**Call Pete on 0419 703 864**  
**or email: pete\_cornellius@hotmail.com**  
**\$25 per half hour**



**www.fingalvalleyhistory.com**

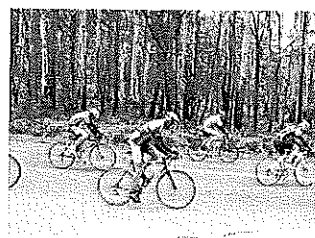
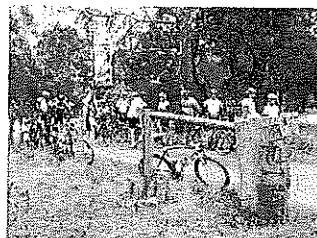
### **CORNWALL HISTORY WALK**

The Society's final history walk for 2010 will be to the old coal mine workings at Cornwall.

It will be held on **Sunday the 5<sup>th</sup> December** meeting at the Purple Possum in Story Street, St Marys, at 10:00am, or Cornwall Park at 10:15am.

Everyone is welcome to come along, enjoy a BYO picnic lunch and learn the history of the township of Cornwall and the coal industry that made it all happen.

**For more details phone Barry: 63725752,**  
**Darlene: 63722416, or Jim: 6372127**



Did hear a story on the grapevine that one of the riders had a fall and was taken to the Community Centre by ambulance, but as yet this has not been confirmed.

The luncheon for the Northern Vets Cycling Club was once again held at the Purple Possum, and I believe they gave the business and staff a huge thumbs up, and passed on the message that the meal was wonderful.

Well done Elaine and staff..



**crossroads**  
winebar & cafe

Friday 12<sup>th</sup> Nov  
**THE PUBLICAN BAND** (Vic)

Friday 19<sup>th</sup> Nov  
**SHANI SAINT-AULBIN**

Friday 10<sup>th</sup> Dec  
**HAT FITZ & CARA ROBINSON** (Qld/Ireland)

Saturday 11<sup>th</sup> Dec  
**PHIL EDGELEY** (NSW)

Friday 17<sup>th</sup> Dec  
**JACOB BOOTE & PHILL McCONNELL**

**\* Sunday Session \* 19<sup>th</sup> Dec 4pm - 8pm**  
**STUART WOOD & MARK GREIG**  
(The Grants) (Australian Crawl)

5/34 Quail St St Helens  
0414719490 Available for private functions 6376 1011  
www.crossroadswinebar.com.au info@crossroadswinebar.com.au

## CATHOLIC CHURCH FUND RAISER

### MINI FAIR

29TH NOVEMBER

PARISH HOUSE

76 MAIN ROAD ST MARYS

10.00AM

### STALLS:

CAKE, CRAFT, PRODUCE & JAM,  
PRE-LOVED ITEMS.  
DEVONSHIRE TEA

### MONSTER RAFFLE:

DRAWN ON 13TH DECEMBER, 2010.  
ENQUIRES: SR LORRAINE. Phone 6372 2252.

#### THANK YOU

Thank you to David Mallet and all the volunteer drivers of the Community Transport bus. All are very obliging, very helpful and we are glad to have a service as good as this in St. Marys.

Graham & Margaret.

#### THANK YOU

THANK YOU TO BREAK O'DAY REGIONAL ARTS  
FOR THE WHEELBARROW FULL OF GOODIES  
I WON AT THE MARKET.  
WHAT A WONDERFUL PRIZE.  
CHRISTINE ROWNTREE.

## Baking a Chrissie cake or making a pudding? See us now!

With Christmas only five weeks away, you don't want to run out of time to bake that perfect cake or pudding. So pop into Purple Possum with your list of ingredients and we'll put it together on the spot or have it ready for you to pick up later. Alternatively you can phone your order through and collect it when you're next in town. We'll even home deliver! With the Purple Possum's reputation for quality you know you'll get the best ingredients – and in exactly the quantity you need so there's no wastage. And your family will love you for those delicious, rich cakes and puddings!

## Purple Possum

Wholefoods & Café

5 Story Street St Marys. Phone 6372 2655.

Open seven days – indoors and garden

## Break O'Day Regional Arts November Events

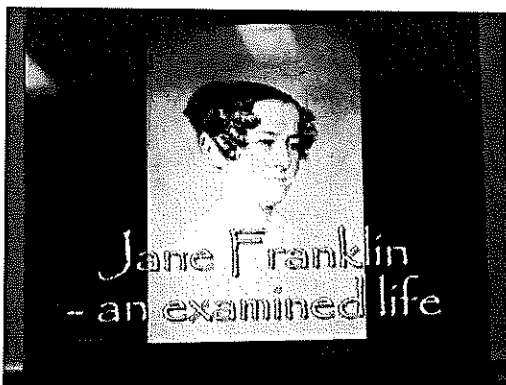
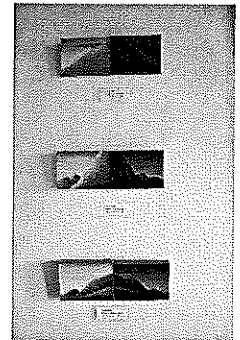
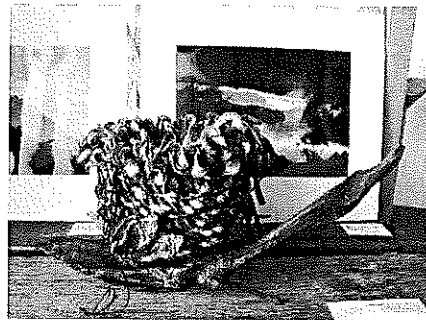
Break O'Day Regional Arts just held an amazing week of events and would like to thank the community for their support and for the artists for their efforts.

These events were well attended by people from all over the Break O'Day municipality when talking with people. They had made a special effort to be at certain things.

The week started with the **Alzheimers Australia Group Exhibition**, held in the Health Centre Foyer at 10am on Thursday 4<sup>th</sup> November. This launch was planned as an intimate morning tea and as it turned out, it was very intimate, as just two community members showed up to show support. This was the most disappointing of all the events held with regard to participation. The exhibition is on show right throughout November, and we are sure that Hayley would love to see some more community members going up to the Foyer to look at the exhibits which have been beautifully displayed.

Thursday night was, for me, the highlight of the week as **Silkweed** performed **Jane Franklin** an examined life in the St Marys Town Hall, about thirty five community members attended the show and thoroughly enjoyed the combination of music, theatre, storytelling, history and song. Some of the musicians in Silkweed had familiar faces to those of us who attended the Bush Dance at Winter Solstice as they had provided some of the music that night as well. It seemed all ages really enjoyed this wonderfully rich and vibrant show, I know I learnt a lot about the history of Tasmania in this wonderful piece of theatre which blended so many mediums! We would like to thank Liz at Mount Elephant Fudge for the fabulous door prize which she donated –it was won by Sue Christianson who we hope had fun eating all those lovely chocolate delights!

And of course another very successful market was held, with lots of stalls, good food, wonderful musicians, and hardly a place to park in the streets. By all accounts most businesses reported a busy and successful day too.



*Photos and story:  
Janet Drummond.*



**Scamander Beach  
Surf Shop**

6 Lagoon Esplanade  
Scamander

Ph: 6372 5529

Scamandersurf.com

Bathers Wetsuits DVDs  
Clothing Footwear  
Bodyboards  
Watches Jewellery

**Surfboards:**

Milch McTavish  
Surftech Bic G Boards

**Bay Surf Shop**

2 Pendrigh Place  
St Helens

Ph: 6376 1755

**HUGE CLEARANCE  
GARAGE SALE  
CORNWALL  
SATURDAY 20 AND  
SUNDAY 21 NOVEMBER**

BOX LOTS FROM \$5  
HOUSEHOLD ITEMS, SHED  
STUFF, COLLECTABLES,  
FURNITURE,  
OUTDOOR ITEMS.  
LOTS AND LOTS  
OF BARGAINS.  
LOT 5 LENNOX ST,  
CORNWALL.  
PLEASE WALK UP DRIVEWAY.

**GARAGE SALE**

**26, 27, 28**

**NOVEMBER, 2010  
22 GRANT STREET  
FINGAL**

Lounge suit, chairs,  
small cabinet, queen  
mattress, small shelves,  
old wardrobe...and more.  
Books, magazines.  
Bric a brac..and more.

**PHONE: PAT  
6374 2206  
0429 098 783**

**GARAGE SALE**

**SATURDAY & SUNDAY—20 & 21 NOVEMBER  
FROM 9AM EACH DAY  
CLEARING OUT ALL HOUSEHOLD GOODS  
“THEY ALL GOTTA GO” -  
(I'M MOVING OVERSEAS)**

QUEENSIZE WATER BED, DOUBLE BED,  
2 SINGLE BEDS, 1 SET BUNKS (ALL WITH  
NEAR NEW MATTRESSES)  
2 LOUNGE SUITES - 2 FRIDGES - FREEZER - TV  
VIDEO PLAYER - ACER COMPUTER WITH  
WINDOWS XP - HP DESKJET 5550 PRINTER  
COMPUTER DESK  
3 WARDROBES - MICROWAVE - SEVERAL  
ELECTRIC KITCHEN APPLIANCES (7 LAST  
COUNT) CONCRETE WASH TROUGH -  
ENAMEL CAST IRON BATH  
1977 NISSAN PATROL - 1980 TOYOTA T18S -  
2 TRAILERS - PLUS SUNDRY OTHER ITEMS.

**AT  
1 CAMERON ST, ST MARYS.  
PHONE DON ON 0429 396 918  
FOR EARLIER INSPECTION.**



# MAIN STREET CLOTHING

Great gift ideas for Christmas

New styles arriving weekly



**LAYBY NOW** AND PAY IT OFF 'TIL CHRISTMAS EVE

**EXTENDED OPENING HOURS FROM  
1ST DECEMBER 'TIL CHRISTMAS EVE  
9AM-5PM**

A magician worked on a cruise ship.

The audience was different each week so the magician did the same tricks over and over again.

There was only one problem: The captain's parrot saw the shows each week and began to understand how the magician did every trick.

Once he understood, he started shouting in the middle of the show, "Look, Its not the same hat!" or, "Look, he's hiding the flowers under the table!" Or "Hey, why are all the cards the ace of spades?"

The magician was furious but couldn't do anything. It was, after all, the captain's parrot.

Then one stormy night on the Pacific, the ship sank, drowning almost all who were on board.

The magician luckily found himself on a piece of wood floating in the middle of the sea, as fate would have it ... With the parrot. They stared at each other with hatred, but did not utter a word.

This went on for a day... and then 2 days. And then 3 days. Finally on the 4th day, the parrot could not hold back any longer and said.. "OK, I give up. Where's the ship?

## EAST COAST PHONE & COMMUNICATIONS

PHONE & DATA CABLING  
Mobile Phone Antennas

DIGITAL TV & FM Antennas

DVD-Set Top Box - Audio Installations

NEXT-G Wireless Internet Antennas

AUSTEL  
LICENCE

CCTV - Cameras & Monitors

Phone & Intercom Systems

JOHN HERON

EAST COAST PHONE  
& COMMUNICATIONS

Mob 0409 959121

A/H 63722402





**White Sands Estate now has so much more to offer: dining, shopping, recreation and of course our special events!!**

**Providore:**

**Open daily 8.30am – 5.00pm**

Come and explore the variety of goods on offer including a wide selection of Tasmanian produce including our own Ironhouse beef, fresh fish, fruit and veggies.

We also stock a wide variety of shop items including ice creams, chocolates & chips to keep the kids happy for hours! You can also collect your daily newspapers here (if you require special papers other than our regular supplies, please let our sales staff know the day before and we will order it in for you).

Also call in and see our gift range featuring Tasmania arts and craft. Remember Christmas is only around the corner and we have plenty of unique easy to post gifts.

**BrewHaus Café and Bar**

**Open Everyday, Lunch and Dinner 11am – late**

**Open for Breakfast, Saturdays and Sundays from 8.30 am**

Come and join us for Ironhouse Brewery tastings and share plates, specialty teas & free trade coffee and cake, plus bistro style meals. Relax and soak up the atmosphere while the children enjoy play land!

**Le Blanc Fine Dining**

**Open for Lunch Saturday & Sunday 12 - 2pm  
and Dinner Tuesday to Sunday 6pm – late**

A quiet area to have a wine and platter before sitting down to enjoy one of Tasmania's best fine dining experience.

To ensure that all our guests receive a high standard of service,  
Summer menu starting soon

**Bookings are preferred by phoning 6372 2228**

**What's happening every week from the  
15th of November onwards!**

**Happy Hour in BrewHaus 5-6pm**

\$7 Daiquiri's

\$5 schooners & Basic spirits

½ price share plates

**Book Now for New Years Eve**

Your choice of al la carte dining in the BrewHaus Cafe and Bar or Le Blanc Fine Dining.

Cam Tapp, from Borne, will be playing in the BrewHaus throughout the evening and into the new year!

An awesome musician who we have been very fortunate to secure for our NYE celebrations check Cam out at [www.camtapp.com](http://www.camtapp.com)

Get a group together and welcome 2011 in style!

**Wine Tasting in the Providore**

Every Friday -All day

Showcasing a different theme each week- we will offer complimentary tastings of wines. All wine will be available at cellar door prices.

**Brewery Tour Every Saturday at 11.30 am**

Finally a consistent time slot!!- Join Briggsy or Matt on the grand tour and then enjoy a private tasting presentation with food matching for only \$15.

**Cinema**

Watch our 3.30 and 6.30pm children's screening or the teenagers and parents can enjoy a flick from 8.30pm onwards- complimentary use when dining or just \$5 contact reception for movies showing on 6372 2228.

**Up and Coming Special Events**

**Ironhouse Beer, Bangers and Blues Day-Saturday the 27th of November 2010**

Enjoy a banger on the deck at the BrewHaus Cafe and Bar or dine al a carte whilst chilling out to the sounds of Pete Cornelius LIVE from 11 am onwards.

Call reception on 6372 2228 for any enquiries or reservations.

**Brewer for a Day**

Join Briggsy for the brewing experience of a life time. Learn all about beer and how to make a real one! Help him mash in and go thru the whole brewing process- he may even get you to help bottle

Full Day : including lunch, tastings, a t shirt and a carton of stubbies to takeaway \$200 per person

Brewing weekend: 2 nights accommodation includes full day brewing, lunch and a carton of stubbies to takeaway \$400 per person twin share

**Next Day: Saturday 2nd of December 2010**

**A great early Christmas present or purchase a ticket for next years dates  
the 26th of February or 9th of April 2010.**

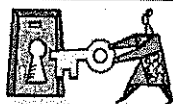
There are so many Christmas presents to choose from at white sands simply phone for a gift certificate for accommodation, our restaurants or beer!

Call in, or browse our Providore on-line for that uniquely Tasmanian craft piece or Ironhouse Brewery merchandise.

[www.white-sands.com.au](http://www.white-sands.com.au)

Ph. 6372 2228





East Coast Autism Support Group

**EAST COAST AUTISM SUPPORT GROUP  
ARE PLEASED TO ANNOUNCE THE RETURN OF  
THEIR  
BIANNUAL AUTISM AWARENESS FUNDRAISER**

THIS YEAR IT WILL BE  
A COCKTAIL PARTY WITH ONE FREE DRINK ON  
ARRIVAL FOLLOWED BY TAPAS



AN AUCTION WITH A NUMBER OF EXCITING  
DONATIONS INCLUDING LOCAL ART AND DESIGNS



AND LIVE MUSIC TO DANCE THE NIGHT  
AWAY



DATE: 20<sup>TH</sup> NOVEMBER 2010  
VENUE: ST HELENS FOOTBALL CLUB  
TIME: 6.00PM  
COST: \$15 PER HEAD



RSVP to KAREN RAWNSLEY [krawnsley@bigpond.com](mailto:krawnsley@bigpond.com) or  
0363725077 or 0418375450 by 16<sup>TH</sup> NOVEMBER AND RECEIVE  
YOUR TICKETS

A BUS WILL BE PROVIDED BY CALOWS COACHES FOR A  
GOLD COIN DONATION BUT BOOKINGS ARE REQUIRED ON 6372 5166



### The Valley & East Coast Voice Guidelines.

- *Opinions in letters published are not necessarily the views held by the editor and voluntary workers.*
- *Our pages will remain open to fair and honest criticism, so that on all questions, both sides may be presented, but any letters containing personal attacks or hinting at libel or slander will not be accepted.*
- *Please do not attack the editor, the paper or the authors of previous letters.*
- *Letter writers will be given the chance to respond over a suitable period of time, but anonymous and/or nom-de-plume letters received as from 11-02-10 will not be published. Subjects may be closed at the editor's discretion.*
- *Please make sure of your facts. Do not write letters just to let off steam. Keep letters short and simple. Letters restricted to 300 words or less will be given preference.*
- *All letters arriving by post must be signed, including a printed name and also contain your contact details, such as full name, address and phone number.*
- *All letters sent by email must contain your contact details, such as full name, address and phone number.*
- *All letters left at drop-off points must have a signature, plus a printed name and also contain your contact details, such as full name, address and phone number.*

### EAST COAST SURVEYING

Consulting surveyors and land planners.

**Mark Anderson 6376 1972**

**We can help you.**

- ☐ Buying a property?
- ☐ Planning a development?
- ☐ Unsure of your property potential
- ☐ In dispute with an adjoining owner?



*The story below, written by Robert Jones, of St Marys, was first published in the Official Magazine of the Australian War Memorial "Wartime", in 2006.*

*It seems appropriate at this particular time of the year to again relate this story, and Robert has given his kind permission for the Valley Voice to do so.*

In the 1890s my great grandfather, James Connell, built a weatherboard farmhouse on his property, "Fern Vale", near St Marys on the east coast of Tasmania.

Now living in the house myself, I have uncovered many historic documents. A small collection of medals, a black and white photograph of a man in uniform, postcards and letters from faraway France tell the story of James "Jim" O'Donnell during his service in the Great War, 1914-1918. James O'Donnell was the grandson of James Connell, and this collection has been passed down through my family over many years.

From a small tin case I take a letter, written by James's mother, Suzie, my great aunt, to her mother, my great grandmother:

*"My dear Mother, I am now going to tell you that my poor Jim has gone to war a fortnight ago. It nearly kills me when I am alone. He is coming home on final leave for three days, at Easter. I don't know how I am going to say goodbye to him. Nearly all the boys have gone from Zeehan,*

*Jim left good work to go, he wouldn't want to be called a coward. He had a great sendoff at Tullah and the Boss presented him with a wristlet watch for a keepsake from all his comrades. Everybody likes Jim where-ever he goes. The manager said when he presented him with the watch there was always a home for him at Tullah whether he was a cripple or not.*

*Dear Mother, it is very hard for me to have to part with such a good son. I hope God will spare him to come back to me.*

*Suzie."*

James enlisted on 7 April 1916 and sailed for Europe on 8 May 1916. He was in the 40th Battalion, 10th Brigade, AIF. From the battle front he wrote:  
"Somewhere in France, 11.1.1917.

*Dear Uncle, I am just writing to you a few lines to let you know that I am still alive and kicking. Hoping you are all well at home.*

*I hope I have the luck to get back again and see you all, it is a good while since I have seen any of you.*

*Well Uncle, I don't think the war is going to last long now. I give it about six months to end now, Everyone is getting sick of the war. We spent out Christmas in the trenches. The fighting is very severe over here. We have been to London a couple of times now. It is a very nice place. I had some good old times there.*

*Well dear Uncle, I think I have told you all for this time. Hoping to have more to tell you next time....*

*James."*

James never returned home. He was killed in action on 5 October 1917.





## ST MARYS BAKERY

PH: 6372 2131

OPEN 7 DAYS A WEEK

FRESH BREAD, ROLLS & BUNS,  
PIES, PASTIES, CAKES, HOT FOOD,  
COFFEE, COLD DRINKS,  
ICE CREAM.

52 MAIN ST ST MARYS.

## Upper Scamander Cattery (& Kennels)

VACANCIES FOR THE CHRISTMAS-NEW YEAR  
PERIOD STILL AVAILABLE

**BOOK NOW TO AVOID DISAPPOINTMENT**

\$15 per night

(2<sup>nd</sup> cat \$7 per night).

Pens include elevated outside  
areas for snoozing in the sun.

SNAKE PROOF FENCING AND  
INGROUND SNAKE REPELLERS

INSTALLED FOR YOUR PEACE OF MIND

Contact Bec Mason today...

63 725 157 or 0409 253 504

upperscamanderkennels@gmail.com



## Strawberry Jelly

EFTPOS — LAYBY

42 Main St. St Marys Ph: 6372 2684

### NOVEMBER SPECIAL

PURE DELIGHT

HEMP OIL

625ml only.

\$10 OFF

WHILE STOCKS LAST. BE QUICK.

- Packed full of Omega 6s and Omega 3s (the good oils)
- 3 times more essential fatty acids than fish oil
- 3 times the vitamin E and twice the iron and magnesium than flax.

#### OPENING HOURS

MON—FRI 10AM—4PM—SAT 10AM—1PM



37 days until  
Christmas



Burton  
Lawyers

James Burton LLB(Hons) BSc  
Barrister & Solicitor

- Conveyancing
- Family Law
- Court attendances
- Wills & Estates

9 Pendrigh Place, St Helens

Open • Monday to Friday • 9am to 5pm

6376-2525



## COUNCIL MEETING HELD ON MONDAY 8 NOVEMBER 2010

The following information is provided as a brief of matters that were discussed and decisions that were made at the Council Meeting held on Monday 8 November 2010 at 10.00am at the St Helens Council Chamber.

There following Notices of Motions were submitted by Councillors for investigation or full reports to be provided to a Meeting of Council in the future:

- Public liability cover for non-profit groups- CARRIED
- Fencing of playground equipment at Lions Park – CARRIED
- Waiver of fees – General Assembly Licence – CARRIED
- Cap General Rate for 2011/2012 - CARRIED

Other items listed for information and decisions by Council were as follows:

Approval request for an investigation into the options available with regard to the creation of a travel agency within the Visitor Information Centre

- Break O'Day Calendar
- Dog Management Policy 2010
- Conservation Covenant Support Policy
- Council Meeting dates for 2011
- Joint State Government and Local Government Valuation and Local Government Rating Review
- Information Reports were provided for the following areas:
  - Financial Reports and Budget Variations
  - Business and Corporate Services Department Report
  - Visitor Information Centre
  - Works and Infrastructure Report
  - Community Services Report
  - Development Services Report
  - General Manager's Report
  - Update on Municipal Management Plan (MMP)

A full set of Council's minutes are available on the Council Website at [www.bodc.tas.gov.au](http://www.bodc.tas.gov.au) alternatively, hard copies are available at the St Marys and St Helens Libraries and the St Helens History Room. Copies can also be requested free of charge by contacting Council's Executive Officer on 6376 7900.

### St Helens Flowers

*Donna of St Helens Flowers takes all the  
fuss out of ordering flowers.*

*Arrangements, Bouquets, Gift  
Baskets, Wedding Flowers,  
Floral Tributes*

Member of the Petals network—we can  
now send or receive flowers worldwide!

*Fantastic Fresh Flowers delivered to your  
door or statewide*

Ph Donna—6376 1211

Fun Range of Helium Balloons!

### ST MARYS NEWSAGENCY

Phone: 6372 2143

Open 7 days a week for your convenience.  
6am – 7pm Mon. to Fri. 7am – 6pm Sat. & Sun.

CALOWS BUS DEPOT

AURORA PAYG

DID YOU KNOW WE SELL FISH BAIT?  
AND FISHING RODS?



WHITE BAIT



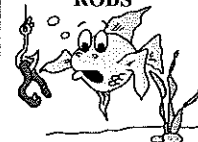
RODS



BLUE BAIT



PRAWNS



SQUID

WE ALSO HAVE PARTY ICE



St Marys  
**PHARMACY**

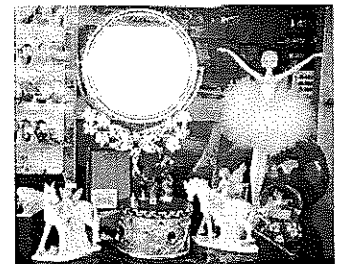
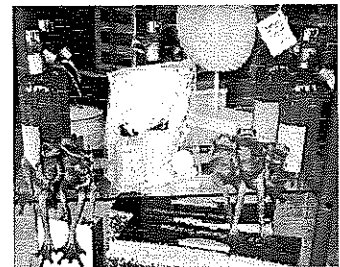
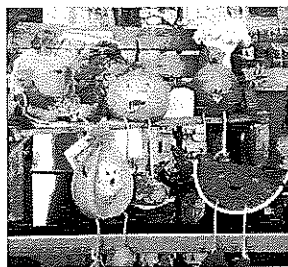
**MAIN ST - ST MARYS PH: 6372 2844**

Call into the Pharmacy and have a look at all our fabulous gift lines for Christmas. We are sure you will find what you are looking for and they are all reasonably priced.

All our staff are only too willing to help you with selections or advice for that special someone.

Our pharmacists are on duty 5 days per week to assist with any medical advice.

Don't forget you can get quality Kodak prints any time in just seconds.



**Kodak quality  
prints in seconds**

***Dick Adams welcomes MYEFO and calls on bipartisan support for Tasmanian contractors***

Dick Adams, Federal Member for Lyons, has welcomed the news that the Gillard Labor Government is delivering on its election commitment to support Tasmanian forest contractors and their employees.

The 2010-11 Mid-Year Economic and Fiscal Outlook demonstrated that the Government is delivering on the election commitment for a \$20 million assistance package for Tasmanian forest contractors and their employees.

"The Government understands native forest harvesting and haulage contractors in Tasmania are facing significant challenges.

"I know that there are a lot of workers and their families in the industry who are facing an uncertain time at the moment, and would like to thank everyone for their patience," Dick Adams said.

Mr Adams said that while the Government was delivering on its election commitment to Tasmanian forestry contractors and their employees, the Liberal Party was engaged in political tricks and games.

"The kind of reckless comments on the Tasmanian forestry industry that we've heard from the opposition does nothing to help the situation.

"All it achieves it to place additional stress on workers and families and sap confidence in an industry that is already facing challenges.

"The Liberal Party took the exact same commitment to the election. I call on them to support this package and support the Tasmanian forestry sector", said Dick Adams.

The Government has said it will meet its election commitment to provide \$20 million to be spent this financial year to help forest contractors and their employees.

Dick Adams said the package would include both exit assistance and business assistance.

"The Government has always said that it would develop a package of both exit and business assistance.

"I have been in regular contact with many stakeholder in the industry and have stressed to the Minister the importance that this package will have to the futures of people in the industry.

"The details of the program will be announced shortly and I expect offers to be made to successful applicants in December 2010," Dick Adams concluded.

## Tasmanian artist featured in national magazine

St. Marys fibre and textile artist Rita Summers is a featured artist in the current issue of national magazine *Down Under Textiles*, published by Creative Living Media. A photograph of one of her artworks, entitled "Cinderella's Wardrobe", is also presented on the cover, helping to bring Tasmanian art, and particularly regional artists, to the national view in a very real way.

The article and photographs, written and taken by Rita, show some of her more recent work with plant-dyed fabrics and rusted papers. These evocative pieces are beginning to be purchased by interstate and overseas collectors, as well as in Tasmania. A piece entitled "Words", pictured in the magazine, was recently purchased by a buyer in Sweden.

Much of Rita's more recent work features found objects such as rusty nails, pieces of glass, feathers, seed pods, small rocks and so on. She also uses old sheet music and used book pages, which are layered with glue and stitch onto corrugated cardboard, foam core, wool or silk fabrics, reused postal packaging and envelopes. Themes which are continually emerging in her work include environmental and social issues, Tasmanian history, personal experience and life experience in general.

Modern technology also is a factor in some works. An installation Rita is currently working on includes fabric which has been printed on an inkjet printer, using designs based on her own photographs and which were taken on her mobile phone and then transmitted to her laptop via Bluetooth.

In the last two years, some of Rita's fibre and textile creations have also begun to attract awards. In 2009 an art quilt called "Survival" won 1<sup>st</sup> prize at the Island Quilts show, displayed at the Derwent Entertainment Centre in Hobart. The next year, a set of small art quilts entitled "Remember Me" won 2<sup>nd</sup> prize, and another won a 1<sup>st</sup> prize in the Little Quilts section.

Rita has also been successful in having some of her work accepted in juried exhibitions interstate. This month, her "Forbidden Fruit" piece was accepted for the One Step Further exhibition in Box Hill, Victoria, while another piece, "Journey of Life – Growth" was accepted for display in a juried exhibition in Wangaratta, Victoria last year.

Trips to Queensland this year and last year (as a workshop tutor, community installation facilitator and judge) have also built on Rita's skills and expertise as an artist and teacher.

Fibre and textile are being recognised more and more as valid media for serious art works. An interesting aspect of this is that many pieces which are contemporary in appearance have their foundation in traditional hand and machine sewing skills.

The boundaries of what is defined as art are becoming more blurred, and the types of media being used are becoming broader. For artists such as Rita Summers this cannot occur soon enough. She is doing everything she can to push the boundaries and raise awareness of this branch of the visual contemporary arts.

**To view Rita's latest creations online:**

[www.gonerustic.com/latest-creations.html](http://www.gonerustic.com/latest-creations.html)

**To view (and purchase) Rita's mixed media/fibre and textile work online:**

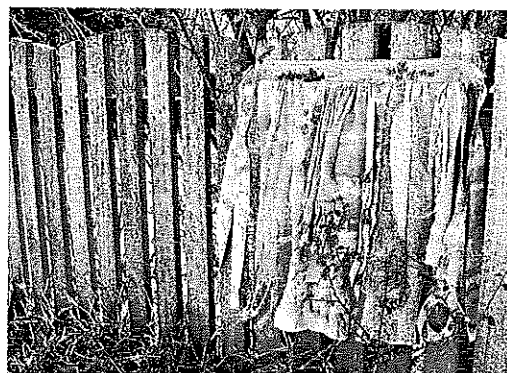
[www.gonerustic.etsy.com](http://www.gonerustic.etsy.com)

**To see Rita's work (as well as other exhibitions):**

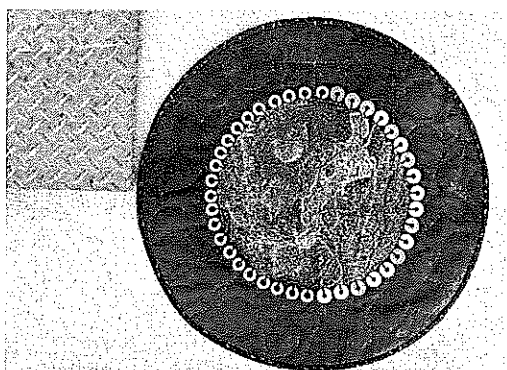
Gone Rustic, 37 Main Street, St. Marys (open Tuesday to Friday, 10 am to 4 pm)

**Contact details:**

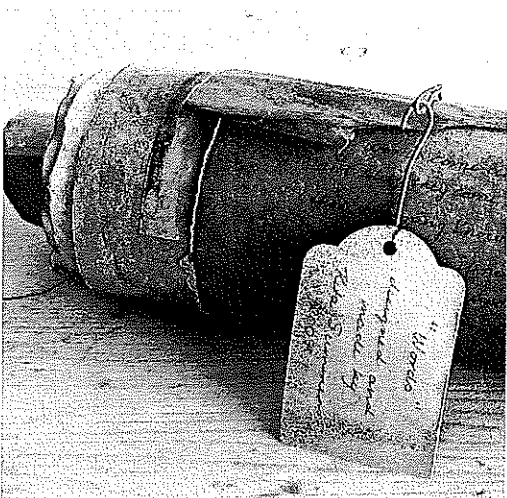
Phone – 03 6372 2724 (BH) Email – [gonerustic@yahoo.com.au](mailto:gonerustic@yahoo.com.au)



*Apron for a driad.*



*Forbidden fruit.*



*Words, closed.*



*Words, open.*



# HELP REVERSE THE PICTURE

Photo: John Mura D.M.

A15E120041 Aurora Energy Pty Ltd ARN 98 092 464 622

Trees that touch powerlines can cause bushfires. You can prevent bushfire by maintaining trees and cleaning up around powerlines on your property. For help and information about vegetation management contact Aurora. And if you see trees growing too close to powerlines, call Aurora on 13 2004, because nothing is more important than your safety.

[www.auroraenergy.com.au](http://www.auroraenergy.com.au)



## The Break O'Day Woodcraft Guild and Men's Shed is

pleased to announce that it will be  
holding markets

**When:**

**Starting NOVEMBER 20, 2010  
at 9:00am.**

**Then every 3<sup>rd</sup> Saturday**

(COMPLEMENTING THE TASMANIAN REGIONAL ARTS  
MARKETS HELD ON THE 1ST SATURDAY)

**Where:**

**THE ST MARYS HALL**

**Cost: \$10 per site.**

**this includes your  
membership to the Guild.**

**(As an ordinary member)**

**Contact: Reon or Wendy on**

**6372 2094**

**A LIMITED NUMBER OF TABLES WILL BE  
AVAILABLE SO PLEASE BOOK EARLY:  
ESPECIALLY IF YOU PREFER AN OUTDOOR  
LOCATION AS TABLES HAVE TO BE BROUGHT  
FROM OUR OWN SUPPLY LOCATED  
AT THE GUILD.**



**CAETEX ST MARYS  
MECHANICAL**

**41 Main St. St Marys Tas 7215**

**Fax: 6372 2822 Mob: 0419 503 109**

### Rae & Partners

**Lawyers Barristers & Solicitors  
113 Cimitiere St Launceston**

Visiting :

**St Marys Community Health Centre  
Alternate Tuesdays : 9 am – 10 am**

**Ph: 6337 5555 For appointments.**

## DickAdamsMP

Federal Member for Lyons

Please contact one of my offices if I can be of any assistance  
53B Main Road 58A High Street  
PO Box 50 PO Box 271  
Perth, Tas 7300 New Norfolk Tas 7140  
Ph 6398 1115 Ph 6261 3366

Toll free 1300 132 689

Email D.Adams.MP@aph.gov.au



**WORKING WITH YOU FOR A  
STRONG COMMUNITY**

Written and Authorised by Dick Adams, 53B Main Road Perth

## DESIGNER HAIR STUDIO

**46 Main St St Marys Ph: 6372 2108**

**SPECIALISING IN KEUNE PRODUCTS**

**For all your hair and beauty treatments**

### PRE CHRISTMAS SPECIAL

**DIVA HAIR STRAIGHTENERS**

**RRP OVER \$200 IN THE CITY**

**SELLING FOR \$149.**

**COME IN AND ORDER NOW  
AND LAY-BY FOR CHRISTMAS.**

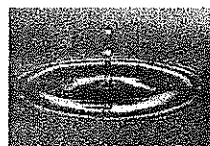
### NOVEMBER SPECIAL

**• MOROCCAN OIL  
SHAMPOO & CONDITIONER  
\$24.50 EACH**

**BEAUTICIAN AVAILABLE  
TUESDAY AND FRIDAY**

**TUES/WED 9.30AM - 5.30PM  
THURSDAY 9.30AM TIL LATE  
FRIDAY 9.30AM TIL LATE BY APPOINTMENT  
PHONE 6372 2108 FOR APPS.**

### WET AREA WATERPROOFING



**PRO-SEAL  
PROFESSIONAL  
WATERPROOFING**

**ROSS WAKEFIELD**

**STATEWIDE**

Phone: 0438 582 973

Email : badgerblue@live.com.au

## Greetings from Lauren.

*Lauren Quinn has spent the last four years in Hobart, studying a combined Bachelor of Arts/Law degree. Earlier this year she was given the opportunity to study a semester of Law abroad at the University of Lucerne in Switzerland. This is a brief description of a St Marys-raised girl's first time out of Australia.*

To leave London, we caught the Eurostar train to Paris, which takes approximately two hours, and travels beneath the English Channel through a tunnel. Surprisingly, the tunnel itself took only about half an hour, which was quicker (and less scary) than I thought.

When we arrived in Paris, at 9.30pm on a Thursday night, we were somewhat freaked out. It was late, we couldn't read the French signs at the train terminal, there were beggars and French "bogans" everywhere around the train station. It was also quite dirty with lots of litter. We finally found the taxi queue and got in a taxi, where I excitedly asked the driver the only French I know - "parlez vous Anglais?" to which he replied, "no". That was a bit of a downer. We managed to get where we wanted to go by writing down the address and saying "oui!" when we saw it.

The hostel was pretty nice, and we were in a 10-bed mixed dorm. There were several obnoxious and loud Americans there, and a few South Americans, who we quickly became friends with. Luciano from Argentina, and brothers Rodrigo and Pablo from Brazil were lovely, and we ended up spending our few days wandering around Paris together, which was really fun (and probably a good idea to have a male escort, as petty crime is fairly common in Paris). Our first impression of Paris was one of a city that was unsafe and dirty, but with male companions and looking around it during daylight hours, it was absolutely beautiful.

We went on a free tour on the first day, which was actually really good, and saw all the touristy things like Notre Dame, the Arc de Triumphe, the Louvre, Moulin Rouge and of course the Eiffel Tower. The Eiffel Tower was absolutely breathtaking, I think because it is such a universally-recognised landmark, and to actually stand under it and see how impressive the big piece of metal really is. To see something that is universally known, to be standing right underneath it, on the other side of the world from where you have grown up and lived your whole life, is such an amazing thing.

The Arc de Triumphe is also pretty amazing, it's a giant concrete arch plonked in the middle of a 6-lane cobblestone roundabout on one of the busiest streets in Paris. However, because the French did not want to destroy the intricate pattern of the cobblestones, they did not paint lane markers on the road, meaning that six lanes of cars are constantly fighting for position and are terrified to merge or change lanes! Apparently there's a serious accident on that roundabout approximately every half an hour.

We also walked over a bridge with wire railings, which had hundreds of different padlocks locked on it. As Paris is the "city of love", people come to this bridge, write/engrave their name on a padlock, lock it to the railing and throw the key into the water below.

There were hundreds of Algerians selling identical miniature Eiffel Towers around the city, and were very persistent in trying to sell you them. Some of them were giving men roses to give to their female companions, saying "take one!", and then when the man is pressured into taking one, the hawker demands money off them.

The trains in France are great; their subway system was really frequent (when they aren't striking or rioting), and aside from the big threat of pickpockets, it was quick and reasonably comfortable. Some buskers even got on the trains at some stations, played the accordion in the carriage, then collected coins from passengers before disembarking at the next station!

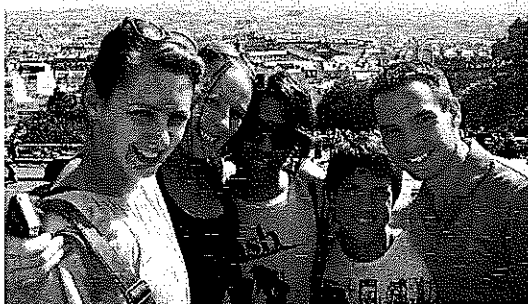
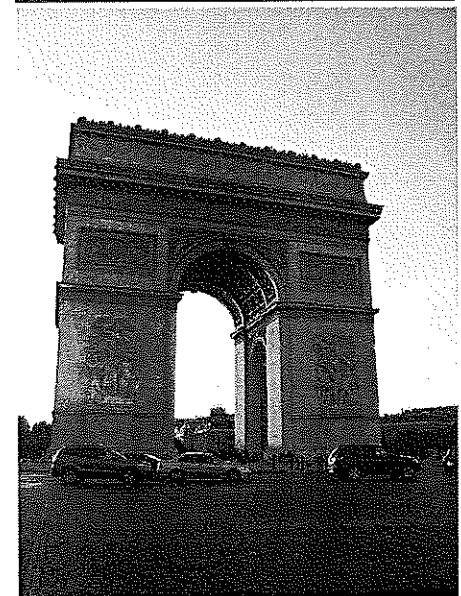
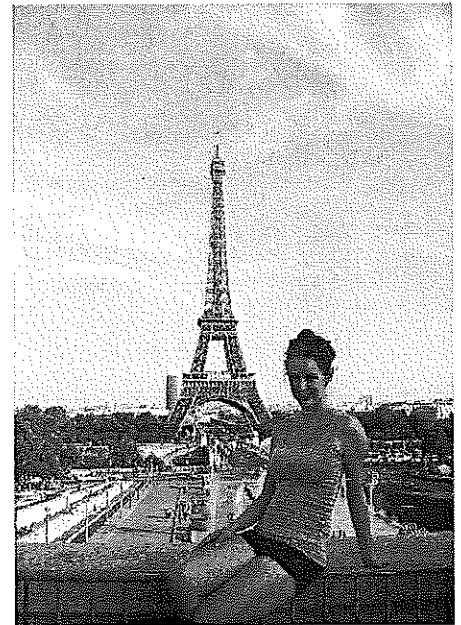
The French people themselves are less rude than I expected. They seem to be a very proud and headstrong culture, such as refusing to stop their cars at red traffic lights, etc. Aside from that, most spoke a little English and were happy to help out, especially if you greeted and asked them to speak English in their own tongue. I think they could tell straightaway that we were tourists, even just from saying "bonjour". I guess it's either the accent or just a really bad pronunciation of French.

The French men are very persistent when it comes to chatting up women. We had one middle-aged French guy follow us off a train at midnight when Kim and I were heading back to our hostel, asking (in very bad English) if we wanted to go have some drinks with him. Even though we repeatedly told him no, he kept persisting and pestering us until we started walking really fast, and then I think he got the hint and walked off.

The French food is quite interesting; breakfast seems to consist of white bread baguettes with jam or Nutella, cereal or pastries. It's a bit of a pain when all you crave is multigrain toast with Vegemite, or fruit! Cheese is very big here. There is a classic French dish called a Croque Monsieur, which is basically a ham and cheese toasted sandwich with grilled cheese on top of it as well! It's pretty disgusting because it's so cheesy. There is a variant called a Croque Madame, which is the same thing but with an egg cracked on top as well. Sadly we never had a chance to try escargots or frogs legs (or even duck gizzards), and stuck to more familiar options, which basically consisted of ham and cheese baguettes, nutella and banana crepes, and not much else, as that was all that was within our limited price range. Paris isn't very cheap! We did go to McDonalds just to check it out, and after language difficulties with the counter staff I ended up with potato wedges instead of fries!

I much enjoyed Paris, and I think it was one of my favourite places I've been so far. I think it's because it has such a different culture/language to Australia, but is Westernised enough to be familiar to me.

*Lauren will reach her destination of Lucerne in Switzerland soon, so her next story of her travels will be the last published for this year.*





**We will be offering a local and friendly service at**

**St Marys      St Helens**

**November    18th                      19th**  
**December    9th                        10th**

**St Marys Community Health Centre  
 & St Helens Hospital**

**If you want a professional consultation with one of our qualified optometrists then**

**contact us on**

**6343 6333**

**All consultations**

**are bulk-billed to Medicare.**

**On Air Now!**

**Vision FM 88.0 at**

**St. Marys, St Helens and Fingal.**

**Robbo isn't alone at breakfast anymore.**

**Shelley has joined him and they are calling the program 'The Journey'**

**100% positive music & talk all day long; connecting faith to life.**

**National Vision Radio Network.**

**Phone 1800 007 770.**

**web [www.vision.org.au](http://www.vision.org.au)**

**Articles for any edition may be left at the St Marys Pharmacy. This also includes items for sale and wanted. Please ensure that your details are included.**

### **Stallholders Market Inc.**

**Is a non profit organisation holding markets every Saturday from 8am in St Helens, at the Library car park. There is a variety of stalls and the fees charged to stall holders is donated to various charities.**

**For stall booking and other inquiries, please phone Marilyn on 6376 1858.**



### **St Marys Market**

**Rain hail or shine the markets will be held on the 1<sup>st</sup> Saturday every month in the community hall 9am till 2pm.**

**New stall holders welcome**

**Phone Colin 03 6372 2707**

# **SPLASH**

## **ST MARYS**

*You swill it, we fill it!*

*You dump it, we pump it!*

**Water cartage  
 Septic pumping**

**Contact: Mick**

**0488 777713**

## **Tim Morris MP**

**Tasmanian Greens Member for Lyons**



*Tasmania*

***I say NO to selling off  
 our School Farms and  
 Research Stations***



**New Address: Shop 9, Covehill Shopping  
 Centre, Bridgewater 7030**

**Phone: (03) 6263 3801**

**E-mail: [greens@parliament.tas.gov.au](mailto:greens@parliament.tas.gov.au)**

**[www.tas.greens.org.au](http://www.tas.greens.org.au)**

Authorised by Tim Morris MP, Parliament House, Hobart 7000.

**Kids Art Club - "Mosaics" Weds 3-4.10**  
Starting August 4th \$12 per week for 5 weeks

**"Textiles and Fibre"-Exhibition & Live music**  
Sat Sept 4th 6.30pm - 9pm

**Mosaic group** has moved to SAT 2.30  
\$20 Tuition & basic materials supplied  
\$12 Basic materials supplied  
\$5 Byo Project (can be anything arty)

**Tues & Weds Afternoons**  
**Guitar, bass or drums** with Sim \$15 - 20 mins

**Weds 1 - 2.30 - Garden Sculptures** (clay  
Modelling, Ferro Cement, heble carving)  
with John McColl \$20

1st **Wed** of every month 5 - 6.30  
**Life Drawing** (Model and materials provided.  
No tuition) \$12 No bookings required

Big Shed has a recording studio & **audio engineer** available Thurs, Fri & Sat for solo/  
band recordings, radio ads, tape & records  
to CD, PA Hire etc.

Big Shed has art space for hire, artists  
available for commissioned artworks,  
graphics and art parties, as well as local art  
& craft for sale.

24837 Tasman Highway, St Helens.  
Phone **0428725228**  
**Bigshedstudios@yahoo.com**

New  
Opening  
Hours

Mon  
11-3  
Tues  
Wed  
11-7

BIG SHED STUDIOS

## HARRIS FUNERALS

**Lindsay & Diane**

(D. Bailey & son) A.F.D.A

Ph/Fax: **6376 1153** Mob: **0418 133 420**

### Office& Residence:

114 Cecilia St  
St Helens

### Chapel:

46 Tully Street  
St Helens

**We are here when you need us  
to arrange Burial or Cremation.**

Pre-paid and pre-arranged funeral plans are available.



## Yanni's

**Café / Laundromat / Catering**



**25 Quail St, St Helens, Tasmania. 7216.**

Ph: (03) **6376 2629**

Mob: **0400 054 110**

email: **marycporter@bigpond.com**



**St. Helens Electrical**

**ROD SHAW**

LIC: C00489

**Domestic, Commercial, Industrial:**

*Wiring and Repairs, Rewires,  
Underground.*

**Home Heating:**

*Advisory, Sales & Installation of heat  
pumps and fixed heaters.*

**Lighting Specialist :**

*Interior and exterior, Advise,  
Sales and Installation.*

Ph: 6372-5522 Mbl: 0407-615-072

2 Lagoon Esplanade, Scamander 7215



## BOBCAT HIRE

- \* Site cleaning & leveling
- \* Excavations
- \* Post hole digging
- \* Landscape preparation

**SAVE HOURS OF HARD WORK.**

**GIVE MARK A CALL**

Ph: **6372 2145.**

## Ransley's Appliance Service

P O Box 136

Scamander Tas 7215

- ° Washing machine NOISY?
- ° Refrigerator runs too LONG?
- ° Clothes dryer blows cold AIR?

**Then you need the service  
of our technicians.**

Ring us on: **Scamander: 6372 5307**

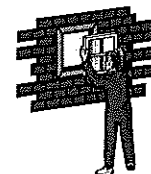
**Mobile: 0428 761 811**



## EAST COAST GLASS

Falmouth Ph: 6372 5361

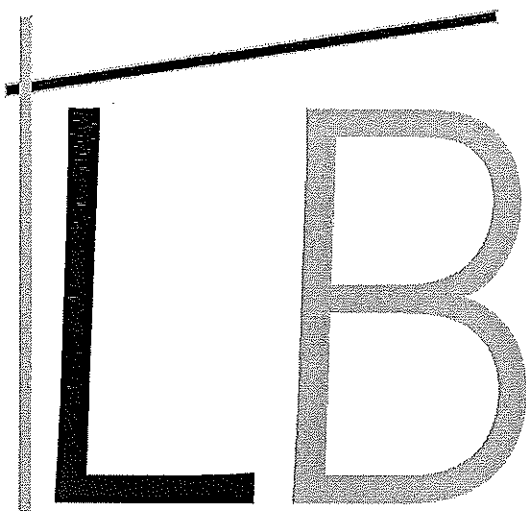
- ▶ Glass repairs
- ▶ Shower screens
- ▶ Wardrobe doors
- ▶ Double glazing
- ▶ Aluminium windows
- ▶ Security doors



**Locally owned and servicing  
the East Coast.**

**Call David and Anne Cannon  
for prompt and reliable service.**





**LINFOOT BUILDING**

CC: 2157T ABN: 71215873017

FOR ALL YOUR BUILDING NEEDS AND  
FREE QUOTES PLEASE PHONE

MORRIS; 0428 722 472

JAMES; 0458 805 929

EMAIL:

LINFOOTBUILDING@BIGPOND.COM

**MLN**

**Painting**

**FREE QUOTES**

**ENTERPRISES**

**East Coast & Fingal Valley**



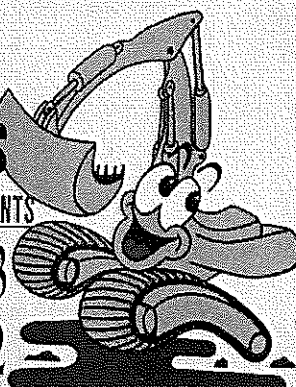
**MICK: 0439 722 718**

**C & D  
EXCAVATIONS**

FOR ALL YOUR EARTHMOVING REQUIREMENTS

Phone : 03 6372 2033

Mobile : 0439 722 032



**LOCAL OWNER - OPERATOR  
OVER 20 YEARS EXPERIENCE**

**Ph : Dana or Craig**

**6372 2033 /0439 722 032**

**Incorporating all your needs in:**

**DAMS, ROADING, FIREBREAKS, LAND CLEARING, HOUSE SITES, DRAINAGE, BRIDGE CONSTRUCTION.**

- ◆ ROAD GRAVELS
- ◆ TOP SOIL
- ◆ SCREENED TOP SOIL
- ◆ SAND
- ◆ ROCKS
- ◆ ON SITE SCREENER 20mm to 75mm (TURN YOUR RUBBISH INTO TOP SOIL)
- ◆ 20 TONNE EXCAVATORS WITH TILT BUCKET & RIPPER, ROCK & LOG GRAB & QUICK HITCH
- ◆ D 65 KOMATSU DOZER, RIPPER & TILT BLADE
- ◆ 10 YARD TIPPER
- ◆ COMPACTION ROLLER
- ◆ WHEEL LOADER

**AND MUCH MORE**

## MEALS ON WHEELS ROSTER

Nov/Dec		St Marys	Fingal
Monday	22nd	Pam Lynch	Neighbourhood House
Tuesday	23rd	Charlie Hersey	
Wednesday	24th	Liz Rice	
Thursday	25th	D & V Rice	
Friday	26th	Pam Gillies	
<b>MOW Contact</b>		<b>Phone:</b>	<b>0488 384 344</b>
Monday	29th	Pam Lynch	Neighbourhood House
Tuesday	30th	Ruth Aulich	
Wednesday Dec	1st	Val Spencer	
Thursday	2nd	Lundy Vosper	
Friday	3rd	Claire bean	Neighbourhood House

## Church Services

### Catholic Parish of St Marys

Sr. Lorraine Groves  
Parish House. Ph: 6372 2252  
Mob: 0409 172 741

#### 1st Sunday: MASS

St Helens Vigil L/W 6.00pm  
Bicheno L/W 9.00am  
Swansea LWC 9.30am  
Mangana 11.30am  
Campbell Town 5.00pm

#### 2nd Sunday: LITURGY

St Helens Vigil LWC 6.00pm  
St Marys LWC 9.00am  
Bicheno LWC 9.00am  
Swansea LWC 9.30am  
Fingal LWC 9.30am  
Campbell Town LWC 5.00pm

#### 3rd Sunday: MASS

St Helens Vigil 6.00pm  
St Marys 9.00am  
Swansea 11.30am  
Campbell Town 5.00pm  
Bicheno LWC 9.00am

#### 4th Sunday LITURGY

St Helens Vigil LWC 6.00pm  
St Marys LWC 9.00am  
Bicheno LWC 9.00am  
Swansea LWC 9.30am  
Fingal LWC 9.30am  
Campbell Town LWC 5.00pm

Enq: Baptisms & Weddings  
Ph: 63 31 4377  
Church of Apostles  
Presbytery  
Officer Hours: 10.00am - 3pm.

### Anglican Parish of Northern Midlands

Avoca: 11am 2nd/4th Sundays  
Fingal: 3 pm 1st/3rd Sundays  
Mathinna: 3pm 2nd/ 4th Sundays  
Ross: 11am 1st/3rd Sundays  
Campbell Town: 9am every Sun.  
(3rd Sunday -Family Service)

### Anglican Parish of Break O'Day

Ph: 6376 1144

St Helens Every Sunday  
8 am and 10.30 am  
St Marys Every Sunday  
10am  
Pyengana: Kids Church,  
2pm - 4th Sunday every month.

### Salvation Army TUESDAY JAM

3-5pm every Tuesday.  
excepting school holidays.  
Envoy Melanie Norton Ph: 63722099

### Break O'Day Uniting Church

The Manse St Helens  
Ph: 6376 2405

St Helens 9.00 am  
Fingal 11.15 am

### Seventh Day Adventist

Hodgeman Street Scamander  
Sabbath School 10 am  
Divine Service 11 am

## Contacts for Valley Voice

PH: Judy: 6372 2155

email: [judith.spilsbury@telair.com.au](mailto:judith.spilsbury@telair.com.au)

Accounts: Mary: 6372 2328

Please leave written material at the  
St Marys Pharmacy,  
Main St, St Marys,  
or post: C/- Post Office, St Marys Tas 7215

### Advertising: 2010

Classifieds: 25 words or less: free

Community notices : free.

Small boxed ads, Garage sales, Greetings.

Thanks etc. \$12.

¼ page \$20. ½ page \$30.

Full page \$50.

1 year posted subscription \$40.

## Break O'Day Anglican Christmas Service times for 2010

11<sup>th</sup> Dec: Carols on the Foreshore with the  
Australian Army Band

21<sup>st</sup> Dec: 7.30pm St Helens Nine Lessons  
& Carols  
7.30pm Pyengana Christmas Service

24<sup>th</sup> Dec: 11.15pm Midnight service @ St Helens

25<sup>th</sup> Dec: 9am St Helens & St Marys  
Christmas Family Service

## St Marys Online Access Centre Opening Hours:

Monday 10am -3pm

Tuesday 10 am-4pm

Wednesday 10am-4 pm

Thursday 10 am - 3 pm

Friday 10 am - 3 pm

Saturday 11 am - 2 pm

Ph: 6372 2005

## ST MARYS OP-SHOP

TRADING HOURS:

10AM — 3.30PM MON TO FRI.

PH:6372 2733.

We have heaps of new summer  
clothes, all sizes.

Come in and stock up for the  
holidays.

It will warm up soon!!

Ph: Tracy 6372 2733

# StMarys & district emergency & business contacts

**CRIMESTOPPERS 1 800 333 000**    **AMBULANCE 000**    **NON EMG. 1800 008 008**    **FIRE 000**  
**POLICE 000**    **COMMUNITY HEALTH CENTRE 6372 2111**    **SES 132 500**  
**NON URGENT 131 444**    **DOCTOR 6372 2111**    **(FLOOD & STORM ONLY)**  
**POLICE ST MARYS 6372 1010**    **BEN LOMOND WATER AND SEWERAGE 13 6992**    **AURORA 13 20 04 EMG.**

## ACCOMMODATION

**ADDLESTONE HOUSE B&B** 6372 2783  
 19 GRAY RD ST MARYS WWW.ADDLESTONEHOUSE.COM.AU  
**FISH-TALES ON THE BAY (BH)** 0439 265 363  
 (PET FRIENDLY) (AH) 6372 2128  
**MARITON HOUSE B&B + HORSE RIDING**  
 1 IRISHTOWN ROAD ST MARYS 6372 2059  
**RAINBOW RETREAT (LOT 1 OFF GILLIES ROAD)**  
 (info@rainbowretreat.com.au) 6372 2168  
**SEAVIEW FARM** 6372 2341  
**ST MARYS HISTORIC HOTEL** 6372 2181  
 (48 MAIN ST ST MARYS)

## ARTS & CRAFTS

**BLUEBERRY COTTAGE (OPEN GARDEN & CRAFTS)**  
 (ELEPHANT PASS) 6372 2755  
 dave@blueberrycottage.com.au  
**GONE RUSTIC STUDIO & GALLERY** 6372 2724  
 (37 MAIN ST ST MARYS)

**GRASSY BOTTOM REGIONAL ARTS**  
 (CONTACT ANY MEMBER)

## ART SUPPLIES

**BIG SHED STUDIOS** 0428 725 228  
 (24837 TASMAN HIGHWAY ST HELENS)  
**WHATEVER ART** 6372 2287  
 (LOT 1 GARDINERS CREEK ROAD)

## AUSTRALIA POST

**ST MARYS POST OFFICE** 6372 2124  
 (MAIN ST ST MARYS)

## BAKERY

**ST MARYS BAKERY** 6372 2131  
 (MAIN ST ST MARYS)

## BANKS

**COMMONWEALTH BANK** 6372 2268  
 (MAIN ST ST MARYS)

## BARRISTER/SOLICITOR

**JAMES BURTON LLB(Hons)BSc** 6376 2525  
 9 PENDRIGH PLACE, ST HELENS

## BERRY FARM

**BLUEBERRIES SEAVIEW FARM** 6372 2341

## BOARDING KENNELS

**THE GUMS KENNELS AND CATTERY**  
 (IRISHTOWN ROAD ST MARYS) 6372 2512  
**UPPER SCAMANDER KENNELS AND**  
**CATTERY (905 UPPER SCAMANDER ROAD)** 6372 5157  
**WAGABOUTS (0429 170 077)** 6376 2131

## BREAK O'DAY COUNCIL

**ST HELENS** 6376 7900

## BREAK O'DAY BUSINESS

**ENTERPRISE CENTRE**  
**BEC SHOP 1/34 QUAIL ST ST HELENS**  
 (ADMIN@SMALLBUSINESS.ORG.AU) 6376 2044

## BUS SERVICES

**CALOWS BUS SERVICE (ST MARYS)** 6372 2476  
 (ST HELENS) 6376 2161

## BUTCHER

**INSTORE SUPERMARKET** 6372 2274

## CABLE LOCATIONS

**TELSTRA COPPER NETWORK & UNDER-**  
**GROUND POWER CABLES ETC.**  
**MICHAEL SMITH** 0408 059 521

**CARERS FOR WILDLIFE TAS INC.**  
 6372 2973 / 0417 017 105

## CARTAGE CONTRACTORS

**C & D EXCAVATIONS** 6372 2033  
**MHENDLEY** 6372 2145  
**TROTTERS CONTRACTING** 6372 2107 6372 2742  
 (EXCAVATION, DRAINAGE, & GENERAL CARTAGE)

## CHILD CARE

**ST MARYS CHILD CARE CENTRE** 6372 2187

## CHURCHES

**ANGLICAN CHURCH** 6376 1144  
**CATHOLIC CHURCH** 6372 2252  
**UNITING CHURCH** 6376 2405  
**SALVATION ARMY** 6372 2099

## CLOTHING

**MAIN STREET CLOTHING** 6372 2211  
**STRAWBERRY JELLY (MAIN ST)** 6372 2684

## COMMUNICATIONS

**DAVID MORRIS** 0402 969 393 6372 2743  
 (david@delafroterra.com.au)  
 (INSTALLATION & SERVICE TECHNICIAN)

## CONFECTIONARY

**MT ELEPHANTY FUDGE (7 STORY ST ST MARYS)**  
 (PROPRIETOR LIZ DEAN) BUS: 6372 2034 H: 6472 2787.

**COMMUNITY CAR** 0428 308 622

## DRAFTSMAN

**BUILDING DESIGN STUDIO** 6372 2000  
 (56a MAIN ST ST MARYS)

## ELECTRICIANS

**ST HELENS ELECTRICAL** 6372 5522  
 0407 615 072

## ELECTRICAL & COMPUTER

**GAZZMAN'S BETTA ELECTRICAL (ST HELENS)**  
 INCL. FURNITURE, BEDS, MANCHESTER FLOOR  
 COVERINGS. HOME WARES Fax: 6376 2159  
 (gazzmans@bettastores.com.au) 6376 2555

## ELECTRICAL REPAIRS

**RANSLEYS HOME APPLIANCES** 6372 5307  
 (SCAMANDER) 0428 761 811  
**RICK ENGINEERING (MAIN ST ST MARYS)** 6372 2460

## FUNERAL DIRECTORS

**HARRIS FUNERALS (ST HELENS)** 6376 1153

## GARAGES

**CALTEX ST MARYS (MAIN ST ST MARYS)** 6372 2335

## GARDEN CENTRE

**MANNA FARM** 6372 2707  
 (45 MAIN ST ST MARYS OPEN THUR/SUN 10 - 4pm)

## GIFTS

AVAILABLE IN MANY BUSINESSES

## GLASS REPLACEMENT

**EAST COAST GLASS** 6372 5361

## GOLF CLUB

**ST MARYS SPORTS CENTRE INC** 6372 2177

## INSURANCE BROKERS

**MCKILLOP INSURANCE (LYM)** 0400 984595

## JUSTICES OF THE PEACE

**K FAULKNER** 6372 2196  
**H VELDUMS** 6372 2124

## HAIR DRESSER

**DESIGNER HAIR (MAIN ST ST MARYS)** 6372 2108

## HEALTH FOODS

**PURPLE POSSUM WHOLE FOODS** 6372 2655  
 (STORY ST ST MARYS)

**HEALTHY COMMUNITY PROJECT** 6376 5242  
 (5 PORTLAND COURT ST HELENS)

## HORTICULTURIST

**PETER DANE (QUALIFIED HORTICULTURIST)** 6372 2686

## HOTEL

**ST MARYS HOTEL (MAIN ST ST MARYS)** 6372 2181

**JAM (JESUS & ME) M NORTON** 6372 2099

## LIBRARY

**ST MARYS LIBRARY** 6372 2114  
 (MAIN ST ST MARYS)

## LINE DANCING

**VALLEY COASTERS** 63 72 2266  
 (SUE FISHER)

## LYMPHOEDEMA CENTRE

**ST MARYS LYMPHOEDEMA CENTRE** 6272 2908  
 (LOCATED AT ST MARYS COMMUNITY HEALTH CENTRE)

## MARRIAGE CELEBRANTS

**PETER POWER (peterpowercelebrant@gmail.com)**  
 0417 017 105

**TERESE TANNER** 0400 512 845 6372 5745

**MEALS ON WHEELS** 0488 384 344

## MECHANICS

**MICHAEL AULICH (MECHANICAL & WELDING REPAIRS**  
 & GENERAL STEEL & ALUMINIUM FABRICATION.  
 209 IRISHTOWN ROAD MOB: 0417 507 239 6372 2991  
**GRANT FAULKNER (CALTEX ST MARYS)** 6372 2335

## MUSEUM

**CRANKS & TINKERERS (IAN)** 0417 648845  
 (MAIN ST ST MARYS)

## NEWSAGENCY

**ST MARYS NEWSAGENCY** 6372 2143  
 (STORY ST ST MARYS)

## NET CENTRE (ST MARYS)

6372 2175

## ONLINE ACCESS CENTRE

**ST MARYS ONLINE CENTRE** 6372 2005

## OP-SHOP (MAIN ST ST MARYS)

6372 2733

## ORGANIC VEGETABLES

**JACK FOREMAN (7 STORY ST ST MARYS)** 6372 2034

## PACING CLUB

**ERIC BEAN SEC.** 6372 2136

## PAINTERS

**MLN ENTERPRISE PAINTING** 0439 722 718

**RAY ROSSKELLY** 6372 2218

## PHARMACY

**ST MARYS PHARMACY** 6372 2844  
 (MAIN ST ST MARYS)

## PLUMBERS

**P J & H K CHILD** 6372 5378

**R G & R I HARWOOD** 6372 2445

## PROOF READER

**LEISSA DANE** 6372 2686

## PROPERTY CONSULTANT

**LYN DAWES PROPERTY CONSULTANT**  
 (TOWNS SHEARING) 0427 560 565

## RESTAURANTS/CAFES

**COACH HOUSE RESTAURANT** 6372 2529

**ESCAPE WILDERNESS CAFE** 6372 2444

**HAPPY BELLY DELI** 0404 725 430

**MT ELEPHANT PANCAKE BARN** 6372 2263

**PURPLE POSSUM WHOLE FOODS** 6372 2655

**SEASALT** 1300 646 001

## SECONDHAND DEALERS &

## COLLECTABLES

**CORNWALL COLLECTABLES** 6372 2365  
 (CNR LENNOX & ALEXANDER ST CORNWALL)

**SECONDHAND ROSE (AH)** 6372 2267

## SEPTIC TANK CLEANERS

**SPLASH ST MARYS** 0488 777 713

## SCHOOLS

**ST MARYS DISTRICT HIGH SCHOOL** 6372 3900  
 (GRAY ROAD ST MARYS)

## SUPERMARKET

**ST MARYS SUPER VALUE** 6372 2240

(MAIN ST ST MARYS) BUTCHERY 6372 2274

## SURFING SUPPLIES

**SCAMANDER BEACH SURF SHOP** 6372 5529  
 (6 LAGOON ESPLANADE SCAMANDER)

**BAY SURF SHOP (2 PENDRIGH PLACE ST HELENS)** 6376 1755

## TELEPHONE, DATA & TV

**EAST COAST PHONE & COMMUNICATIONS**  
 (JOHN HERON) (DIGITAL TV & SET TOP BOXES)  
 0409 959 121 6372 2402

**DELAFRONTERA (DAVE MORRIS) INSTALLATION &**  
**SERVICE TECHNICIAN MOB: 0402 969 393 Ph: 6372 2743**

## SURVEYORS

**EAST COAST SURVEYING (ST HELENS)** 6376 1972

**VALLEY VOICE PUBLICATIONS**

**ACCOUNTS** 6372 2328

**ADVERTISING** 6372 2155

(judith.spilsbury@telair.com.au)

## WATER CARRIERS

**SPLASH ST MARYS** 0488 777 713

## WOODWORK GUILD

**OLD RAILWAY GOODS SHED (ST MARYS)** 6372 2094

**WIDE SPAN SHEDS** 6372 2724

## YOUTH HOSTEL

**SEAVIEW FARM (GERMANTOWN)** 6372 2341

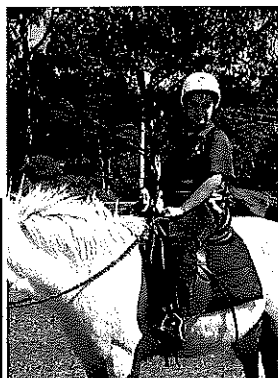
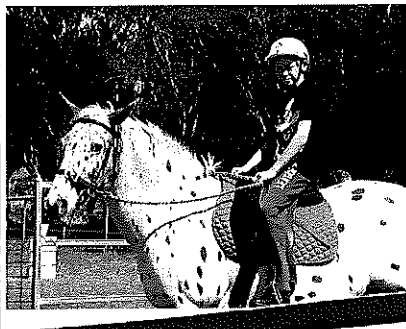
Mon	Tue	Wed	Thu	Fri
		<b>17 Nov</b> 🐾 ENE Cricket 🐾 RSA Course	<b>18 Nov</b> 🐾 Combined ENE Athletics 🐾 Launching into Learning 11am - Kinder room 🐾 Stepping Stones 1.30pm - Kinder room	<b>19 Nov</b> 🐾 Student Banking Day
<b>22 Nov</b>	<b>23 Nov</b> 🐾 2011 Student Leader Speeches and Elections 🐾 Student Banking Day	<b>24 Nov</b>	<b>25 Nov</b> 🐾 Social 🐾 2011 Kinder Orientation 🐾 Launching into Learning 11am - Kinder room 🐾 Fingal Primary School Twilight BBQ & Mini fair - 3.30pm at school	<b>26 Nov</b> 🐾 Student Banking Day
<b>29 Nov</b> 🐾 Primary Assembly 2.10pm - Special Guest Pat the Dog from the CBA.	<b>30 Nov</b> 🐾 Student Banking Day	<b>1 Dec</b> 🐾 6-7 Transition Parent Session 🐾 Youth Issues Workshop	<b>2 Dec</b> 🐾 Prep-6 Excursion to Launceston 🐾 Final Launching into Learning 🐾 Final Stepping Stones	<b>3 Dec</b> 🐾 State Athletics 🐾 Student Banking Day

Above calendar is correct at time of printing  
 For regular updates and other information please go to the school website:-

**[www.schools.education.tas.gov.au/stmarys](http://www.schools.education.tas.gov.au/stmarys)**

**R.D.A.**

Students from St.Marys District High School have been travelling to St.Helens each week during Term 1 and Term 3 to participate in RDA (Riding Develops Ability). We have been joined by a student from St.Helens. The students have had a wonderful time and their riding ability and confidence is increasing every week. Several students are now able to ride unassisted in the round yard. A big thank you to Cindy King and her group of volunteers who come to St.Helens every Thursday for making this excellent opportunity available for our students.



# Poetry by Grade 9/10

## St Marys

In the slow moving town  
Where the rain's pouring down

With its bone chilling breeze  
And its towering mysterious trees

And clouds of the darkest grey  
That will not lift at all this day

Looming mountains as far as I can see  
With the mist rolling down, encasing this town

The stillness of the trees, the grass, the air  
Makes you wonder, makes you despair.

Billy Harris

## Book

Ink stained body weakening with time  
But its frail spine holding it together  
Echoing a sealed romance  
Whispering a fearless adventure  
An antique memory creating its own existence

Emily Quinn

## My Shoe

My shoe has a tongue,  
It eats my foot.

Bradley Mitchell

## Death:

The freshly picked flower  
Gleaming, luminous and fresh.  
Over time, it fades.  
Sags, loses its magnificence.  
There in the vase, on the table  
Becoming less admired every day  
Until in due course, thrown in the bin.  
We don't yearn for you anymore.  
Once you're gone, there's no coming back.  
"always remembered" but the mourning fades.

## Your Voice

Your voice is  
Like sand paper  
Like a truck driving past at 100 miles an hour  
Like a bear leaving its cub  
Like a storm about to break loose thunder and lightning.  
Like a tree without roots  
Like a rainbow in the distance

Indi Douglas

## Grade 8 Camp

Wednesday the 15<sup>th</sup> of October our grade 8's left for our Coles Bay camp. Mr Lynch used his wit to entertain us all as the bus was over an hour late.

When we finally arrived at the Illuka Caravan Park we set up camp with the weather slowing us down as it rained most of the day. We spent the afternoon mountain bike riding, playing beach games and walking leisurely to the jetty and back. Later on we joined together and played some games on the beach with the activity instructors from Aardvark Adventures. Some of us had a go at juggling. The next day the groups had a go at abseiling, kayaking and rock climbing. Late that afternoon the people that were still full of energy went swimming while the rest of us chilled out at our camp sites because we were all tired. Friday (our last day) we packed up our tents loaded our gear on the bus and made our way to the Wineglass Bay Lookout. The view was fantastic. On the way back to St Mary's we stopped to have lunch in Bicheno. Over all our grade 8 camp was lots of fun and learnt some new skills.

Written by Taylah Bushing, Luke Graham  
& Tamiacka Davern







# ST MARYS COMMUNITY HEALTH CENTRE

## DOCTORS ROSTER

18th & 19th Nov Dr Cyril Latt

22nd—4th Dec Dr Jenny Conway

24th Nov & 1st Dec Dr Libby Reeckman  
Women's Health Clinic Days

25th Nov & 2nd & 3rd Dec Dr Libby Reeckman

## St Marys Community Health Centre

### GP Surgery Hours:

Monday—Friday 8:50am-12:30pm  
12:30pm-1:30pm LUNCH  
1:30pm-4:30pm

### PATHOLOGY SERVICE

No Pathology Service between  
12:00-1:30pm or before 8:30am daily.

If you require Pathology **before 8:30am** an appointment **must** be made with the Nurses Station **the day/night before**.

### INR TESTS

A doctor's appointment is required if you are having an INR test. Please **let reception staff know when making your appointment that you are having an INR test**. This is a 5 minute doctor consult.

### AFTER HOURS SERVICE CONTACT NUMBERS

PLEASE PHONE GP ASSIST ON 1300 780 011

AMBULANCE 1800 008 008 or

EMERGENCY 000

COMMUNITY HEALTH CENTRE 6372 2111

**PLEASE RING BEFORE PRESENTING AFTER HOURS**

### SCRIPTS AND DOCTORS APPOINTMENTS

Please ensure doctors appointments are booked **prior** to your medication/s running out or **in advance** if you are attending this practice regularly.

Scripts **can not be requested by patients over the phone** and are unable to be done over the weekends, ensure you have enough medications in advance. **PLEASE BE PATIENT** waiting periods can apply.

### DISABILITY PARKING

There is one Disability Parking Bay at the Entrance to the Centre. Additional bay will be available in the future.

**DISABILITY PARKING MEANS:** you have a **permanent disability** which prohibits independent access and you hold a current Parking Concession approved by Transport Tasmania. Disability Parking **is not available** to people who do not hold a valid **parking concession card**.

This is also a **short term parking bay** alternate parking bays are available within the Centre's car park.

## WHAT'S ON AT THE CENTRE

18th Nov

**Eyelines-** For appointments please phone 1300 139 363. All consultations Bulk Billed to Medicare

**Relationships Australia-** Leanne McMurtie for appointments please phone 1300 364 277

**Continence Nurse-** Sue (Replacing Heather). For appointment please see your GP or Health Professional for a referral.

**GP Podiatrist-** Annabelle. For appointment please see your GP or Health Professional for a referral.

22nd Nov

**Social Work-** Helen Jennings. Please phone 6372 2111 for appointments

23rd Nov

**Social Work-** Helen Jennings. Please phone 6372 2111 for appointments

**Child Health Session** with Sue Gofton every Tuesday- Appointments only. Please phone 0428 136 381

24th Nov

**Day Centre-** For details on the group please contact Hayley Gilbert 6372 2111

**GP North Mental Health Worker-** Brady Young for appointments please see your GP for a referral.

**Social Work-** Helen Jennings. Please phone 6372 2111 for appointments

29th Nov

**Social Work-** Helen Jennings. Please phone 6372 2111 for appointments

30th Nov

**Social Work-** Helen Jennings. Please phone 6372 2111 for appointments

**Child Health Session** with Sue Gofton every Tuesday- Appointments only. Please phone 0428 136 381

**Tom Bain, Rae & Partners Lawyers.** At the Community Health Centre Tuesday fortnights. For appointments please phone 6337 5555

1st Dec

**Day Centre-** For details on the group please contact Hayley Gilbert 6372 2111

**GP North Mental Health Worker-** Brady Young for appointments please see your GP for a referral.

2nd Dec

**Relationships Australia-** Leanne McMurtie for appointments please phone 1300 364 277

6th Dec

**Hospital Auxiliary Meeting** 1:30 in the Day Room

**Social Work-** Helen Jennings. Please phone 6372 2111 for appointments

## IMPORTANT PUBLIC NOTICE

Please be aware that the Collex rubbish bins at the Community Health Centre are for **COMMUNITY HEALTH CENTRE RUBBISH ONLY**.

Our local tip is open: Tuesdays 10am-4pm, Thursdays 10am-4pm and Sundays 2pm-5pm. Thank you



# East Coast District

*Transporting the Frail Aged and Younger People  
with Disabilities & Carers in our Community*

---

## **Need Transport ?**

Community Transport Services Tasmania Inc.  
provides transport for a variety of  
purposes including a wheelchair accessible  
vehicle.

Servicing St Marys, St Helens, Bicheno, Swansea,  
Ross, Campbell Town and surrounding areas.

**Contact David on**

**6372 2137**

---

**Office :**

2 Story Street  
St Marys

**Office Hours :**

Monday to Friday,  
9am to 1pm

# FINGAL PRIMARY SCHOOL



Mosaic Opening,

Twilight BBQ and Mini -Fair

Mosaic Opening

BBQ

Music

Catapult Challenge

Face Painting

Class Items

Stalls

Plants,

Books,

Christmas

Crafts etc

School Association  
Christmas Hamper

Raffle

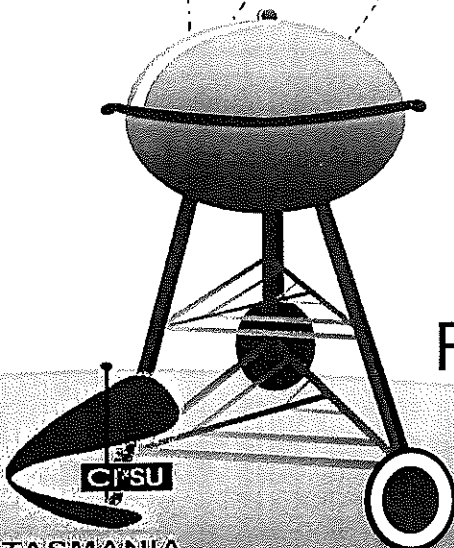
Chocolate Wheel

THURSDAY 25 NOVEMBER

3.30 ONWARDS

FINGAL PRIMARY SCHOOL

Donations for raffle & chocolate wheel would  
be appreciated and can be left at the school  
office. Contact 63742197



St Marys Sports Centre Inc. news Kackhander.

We wish we had a lot of news but once again lousy weather has put a kybosh on some activities.. In bowls a loss occurred in men's pennant at St Helens two weekends back with Kodie Donald's rink recording a win. Once again though no-one was disgraced and all the results were quite close. This with so many players unavailable. If only we could get a full squad to pick from.

In the ladies a fantastic 10-0 win was recorded. That's brilliant. Even more pleasing was to see Shantelle Arratta and Amber Davern join the team. It is wonderful to have two junior girls as part of what is already a very young side.

Last Saturday a washout occurred due to the green not being able to be prepared against Bicheno. What can you do? Once again though was some fabulous news. Two young male bowlers signed up during the week and would have played their first games for the club if inclement weather hadn't occurred.. Probably do so this week though.

We welcome Shaye Ward and Jye Baldwin from Fingal into the side. They certainly will be a great asset to the club in coming times.

This week's game is against Scamander at St.Marys.

To golf and just a reminder to all that HARWOOD PLUMBING SERVICES are very kindly and generously sponsoring the Annual Tournament in early December.

We thank Russell and Bobbie very much for this. More details in the next Valley Voice. Great effort.

THANKS TO ALL OUR GOLF COURSE, BOWLS GREEN AND BAR VOLUNTEERS FOR ALL YOUR SERVICES. IT'S FANTASTIC.

Anyway, until next time, good hitting and rolling.

## VOLLEY BALL

### BACK IN ST MARYS

ANYONE INTERESTED PLEASE CALL:

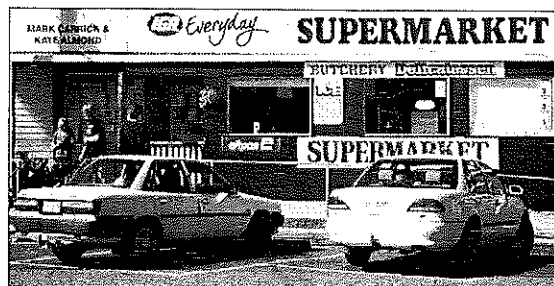
**Ian Bradbury: 0418 503 054 -6372 2209**

**Jamie Haas: 6372 2088**

#### APOLOGY

*In the last edition of the Valley & East Coast Voice (Vol 43 N0 12) Scotch Fillet steak was incorrectly advertised. The correct price should have been \$24.99.*

*The error was entirely my fault and I apologise to IGA for my mistake, and I am very sorry for the inconvenience caused to management, staff and customers. Ed.*



38 Main Street St Marys

Phone/Fax 6372 2240 - Butcher Ph: 6372 2274

Mon - Fri 8am - 6pm

Sat 8am 12 noon

#### **This week's specials.**

##### **From the butchery**

Porterhouse steak	\$15.99kg
Beef mince	\$ 9.99kg
Corned silverside	\$ 6.99kg
Legs of lamb	\$ 9.99kg
BBQ lamb chops	\$ 8.99kg

##### **From the freezer**

Peters Billabong 10pk	\$5.75
Peters original icecream 4lt	\$7.99
Nestle drumstick 24pk	\$21.99
4 'n' twenty pies 600g	\$5.85
Cadbury icecream 2lt	\$7.55

##### **Instore**

Trix dishwashing liquid 1lt	\$1.99
Berri longlife juice 2.4lt	\$3.49
Cussons pure liquid handwash 250ml	\$1.99
Cadbury medium bars 30-60g	.99c
Sorbent facial tissues thick & large 70-90s	\$1.99

#### **Next week's specials.**

##### **From the butchery**

Ingham Gourmet chicken portions	\$ 5.59kg
Topside beef roast	\$ 8.99kg
Marinated roast	\$15.99kg
T-bone steak	\$15.99kg
Scotch fillet steak	\$25.99kg

##### **Cooking**

Greens sponge pudding mix 260g	\$2.65
CSR brown sugar 500g	\$2.29
Zafarelli pasta 500g	\$1.39
Multix oven bags extra wide 7pk	\$2.39
Multix alfoil 30cm x 10m	\$1.99

##### **ALL ONLY \$1.99**

Wrigleys Eclipse mints 50pk

Arnotts shapes 160-200g

The Natural Confection Company 140 -200g

Surf concentrated 2 x ultra laundry powder 500g

Pedigree canned dog food 700g

Bundaberg gingerbeer 750ml



YES, IT'S GETTING TOWARDS  
THAT TIME OF YEAR AGAIN



**We are taking orders for  
all your Christmas needs—hams,  
turkeys, ducks, chickens & prawns.**

**Call in and ask for anything you may need.**