



BISHOP JOHN'S FIRST VISIT TO ST MARYS ANGLICAN CHURCH

The Anglican Bishop of Tasmania visited St Marys last Sunday (20 September) at the Holy Trinity Anglican Church.

This was Bishop John Harrower's first visit to St Marys since becoming Bishop of Tasmania 9 years ago.

Bishop John spoke on personal holiness in our Christian lives in a world that is increasingly seeking to please itself, and the concept of serving others as being one of the hands on ways of living out our faith.

He shared also from his experiences in Argentina as a missionary, and the hospitality extended to you, once you were welcomed into a group, and how in many ways it paralleled the family of believers sharing in Holy Communion.

We shared a wonderful time of worship, followed by good conversations, good food, the joy and delight of each others company, and the friendship of our Bishop.

Article and photos submitted by Carole Withers.



St Marys Community Kitchen Program

What is a community Kitchen?

A community kitchen is a group of people who come together to socialise and cook delicious, affordable and nutritious meals which they share together. You do not need to have any previous cooking experience as a trained kitchen facilitator will be there to help.

The program will be held on Thursday mornings, 10am to 1pm, beginning in late October. It will cost \$5 to join and \$2 per week. Transport will be available for those who require it.

If you would like to find out more, we are holding a free lunch and information session on Thursday October 22nd at 12pm at the day centre at St Marys Community Health Centre. Bookings for this lunch are essential. Please call Sallie at The Community Health Centre on 6372 2111 or Michelle at the Healthy House on 6376 5242.

Tasmanian Lymphoedema & Laser Centre Inc. Operating from the St Marys Community Health Centre

Do you have a sporting injury, ulcer, arthritis, gout, tennis elbow?

As well as treatment for the condition of Lymphoedema, the low level laser at the Tasmanian Lymphoedema Centre, can help with the treatment of these common conditions.

Call the enquiries/booking office on 6372 2900

Laser Therapist Kate Williams

Massage Therapist Sue Christiansen 0418 515 419

email: tlcstmarys@hotmail.com

www.taslymphoedema.asn.au



**Please note: Deadline for articles to be included in the next Valley Voice is 5 pm Tuesday October 6, 2009.
email address: judith.spilsbury@bigpond.com**

Community news

St Marys Hospital Auxiliary meets the first Monday of every month at 2pm at the **St Marys Community Health Centre**.

The Break O'Day Woodcraft Guild Inc. meets the last Saturday of the month at 2pm at the goods shed behind the St Marys Railway Station.

Grassy Bottom Regional Arts General Meetings are now held at 5pm on the first Wednesday of every month at the Happy Belly Deli. Come along and enjoy the fun and bring along your ideas for the Arts in this community.

The **Tasmanian Lymphoedema Centre Inc.**, holds meetings every 3rd Monday of the month at 10 am at the St Marys Community Health Centre.

St Marys Ladies Midweek Tennis 9.30am each wed. Need new players - of any standard-beginners welcome-childminding included - lovely safe place to bring toddlers while you play. **Ring Annette-6372 2224.**

St Marys Playgroup meets each Thursday at 10.30am at the kindergarten. All preschool aged kids welcome to bring a carer/parent/granny/pa for a play and morning tea. Very chilled relaxed group of all ages - we love new members. **Contact Danyelle Briggs:**

WOMBAT WALK LANDSCAPING GROUP meet every Wednesday 9am to 12 Noon (weather permitting) at St Marys Musical Playground area to plant and maintain the rivulet park and flower bank - anyone interested in joining us - please come along and meet our group. **Contact - Robina 6372 2022.**

Break O'Day Wine & Food Appreciation Society meets once a month on the last Sunday.
Ph: Jan 6376 1661 or Leanne Ph: 6372 5291.

The Scamander and Beaumaris Community Development Association meets at 7 pm at the Scamander Sports Complex every third Wednesday of the month. New members are most welcome.

St. Patricks Head & Esk Valley Historical Society meets on the third Sunday of every month, except December, at St. Marys Online Access Centre at 2.30 pm. Meetings are informal and fun and new members are needed. Please contact **Barry Aulich** on **6372 5752** or **Jim Haas** on **6372 2127.**

The Falmouth Community centre would like to advise members and the community that the new contact for bookings of club facilities is Ben Morgan. Ben can be contacted on **03 6372 5604.**

Suncoast Singers meet every Friday at 10am in the Catholic Hall - Cecilia Street St Helens. New singers always welcome.....If you can yawn - you can sing. Phone Mary-Anne Wadsworth 6376 2969.

St. Helens Al-Anon Family Group Meeting: St. Pauls Anglican Church Hall - every Sunday 2pm Contacts: **Ann, John 6376 3270 or Rose 6376 3335.**

gone rustic studio & gallery

37 main street
st marys 7215

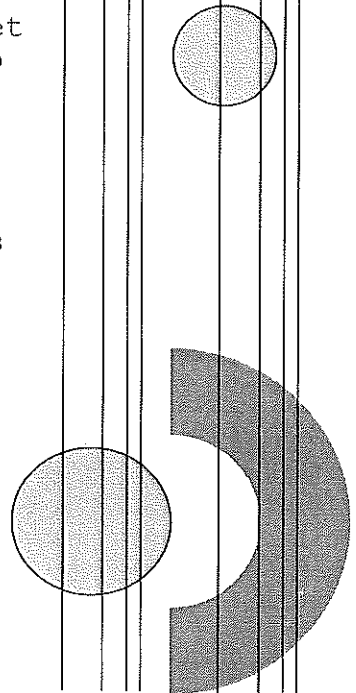
0363722724
0417027424
0417648845

**cards & gifts
textile art
mixed media
exhibitions
workshops
kit homes
sheds**

*supporting
tassie made and
aussie made
products*

mon - fri
10 - 4

www.gonerustic.com
gonerustic@yahoo.com.au



Expressions of interest

St Marys District High School Association is calling for expressions of interest from

Qualified swimming instructors,

who may be interested in facilitating a Learn to Swim Program for 4-12yr old children from the 4th - 15th January 2010 (10 week -day sessions), at the school pool.

Please forward your CV, including contact details to the school office by Friday 24th October, marked : **Learn to Swim Program.**

Please note that the decision to proceed with the program will be dependent on sufficient interest from families.

Further information is available from:

Tanya Greenwood tel: 6372 2187 (BH)

WANTED TO LEASE

5 TO 50 ACRES

**HAPPY TO DO SOME FENCING
AND CAN CART SOME WATER.**

FINGAL VALLEY OR COASTAL AREA.

PH: 6374 1083.

Classifieds

For sale

Set of drums. Near new. \$250. Ph: 6372 5635.

Vieta 2 stroke mulcher mower with catcher. Good condition, recently serviced. \$150. Ph: 6372 2239.

TK Bedford tip truck. 8 ton GVM. \$4,500.
Ph: 0408 596 152 or 6339 3731.

3 seater lounge timber frame 80 style good cond. \$70.
Ph: 6372 5529.

2000 LANDROVER FREELANDER 4 x 4. BICHENO.
3dr hardtop, a/con, p/steering, p/windows, dual airbags,
nudge bar, anti theft, central locking, 130,000 klm,
Metallic Green, this car looks and drives like new, it is
immaculate inside and out, any inspection welcome.

\$8999. ono Please Contact 0417 510 458.

5 aluminium windows. All in good order. With screens.
\$300 the lot. Ph: 6372 2924.

New Poulin chain saw, 32cc 16 inch bar. \$150.

140 amp Easy Welder. \$100.

FREE trailer axle, wheel & springs, plus lawn roller.
Ph: 6372 2251.

Refrigerator, NEC 520 litre. Econo & quick freeze
options on freezer. VGC. White. \$350. Ph: 6372 2981.

Duck eggs. \$4 per dozen. Delivered St Marys area.
Ph: 6372 2341.

Piano, Collard & Collard. \$475. Ph: 6372 2872.

1992 Toyota Corolla. Goes well, good condition.
\$3,000. ono. Ph: 0428 362 958.

Motorised Treadmill. Pro Series. An oldie but a
goody. \$100. Will deliver if required. Ph: 6372 2535.

Niblick golf shoes. Women's size 9. As new. (worn once)
\$40. Ph: Christine 6372 5689 or 0419 368 099.

Baby rats. \$10 each. Ph: 6372 2357.

Small seed drill. \$150. Ph: 6374 2219.

Garden mulch, in big round bales. (wheat straw, weed
free) \$70 a bale, delivered free. Ph: 0407 944 158.

Children's heavy duty material indoor playhouse tent.
"Bazoongi" brand. Great birthday or Xmas gift. As
new. \$30.

Contact: Karen Polden: Ph: 6372 2438 or 0439 333 398.

Straw Bales for sale, \$8 each. Ph: 6376 2131.

Tractor slashing available. Fire wood. 1, 2, & 3 tonne
loads Ph: 0407 944 158.

Frozen blueberries -this season's - \$12 kilo. 2 or more
kilos, \$10.50 per kilo. Ph: 63722341.

Homebrew supplies

Beer and spirit making supplies. All your kits, yeasts,
essences and equipment available. Free local delivery in
St Marys and district. Ph: 6372 2540.

"Moo-Poo". Finely screened. Any amounts. See Norm.
Ph: 6372 2380.

WANTED TO BUY
SMALL CARAVAN
in reasonable condition.
Ph: 6372 5635

WANTED TO BUY
SHIPPING CONTAINER
20 TO 40 FT
Ph: 6372 2107 or 0417 279 422
Glen Trotter Cornwall

WANTED
anyone out there have empty pots? (pot plant pots)
if you're going to throw them away, appreciate if you
phone this keen gardener first, will pick up, any amount.
PH: Lesley 63722818.

SEEKING..... Someone to crochet a jumper.
If you can help please phone : 6372 2756.

WANTED
Pottery wheels for art classes.
Phone Big Shed Studios, 0428 725 228.

FOR SALE

2000 Holden Rodeo White LX Crewcab Ute

- 4 x 2 5 speed
- 3.2 litres V6
- 161,000 km
- 5 mths registration
- Air conditioning
- Power steering
- Radio, CD player
- Near new tyres & battery
- Towbar
- Colour white
- Regularly serviced
- \$8,750

Ph: 0439 334 539

POSITIONS VACANT

Positions available for casual housekeepers.

Must be reliable, trustworthy and hardworking.
Commercial cleaning experience an advantage
otherwise must be motivated to learn and
follow procedures.

Flexible and fixed hours available. Ranging from 10
hrs in low season to 30 hrs in high season.

Car License essential.

Please send application letter to introduce yourself
and outline your availability as well as your resume
to The Assistant Manager, White Sands Resort,
P O BOX 147 St Marys 7215,
by Tuesday October 6, 2009.

A LITTLE BIT OF HERITAGE: Jim Haas "Scamander Hotel"

For many of our early pioneers Scamander was more of a bugbear than the prestige picturesque place we know today. Bullock teams were lost in the breakers while trying to cross the river, bridges were frequently washed away and the roads leading into the area were nothing more than goat tracks. Towards the latter half of the Nineteenth Century, however, one man saw beyond the traumas of the past and realized the potential of this beautiful part of Tasmania as a tourist attraction.

In 1896 the Scamander Hotel opened its doors to tourists, travellers and holiday makers. It was a weatherboard construction situated on the northern side of the river and built by carpenters John and Frank Walker. John Walker along with various family members ran the hotel for the next thirty years.

John Walker saw a future in the tourist industry on the East Coast and was, perhaps, the first business man to advertise and promote it. He had photographs of the hotel taken and distributed with interesting annotations like: "Tasmania's very best river for bream fishing, with other varieties plentiful".

The promotions went on to say "Good shooting including ducks, swans and bronze wing pigeons. Drive over the famous St Marys Pass and experience a beautiful climate which is cool in summer and exceedingly mild in winter. Boats and bait are supplied to patrons free. There is plenty of swimming and surfing available, with private bathing boxes for the ladies. (Why only for the ladies?) You can watch steamers sail past and your telegrams and letters will receive prompt attention. Indeed it is a tourist, holiday maker and anglers paradise."

Over the years the Walker food and hospitality became widely known, with the food menu sounding something like this: "Fresh flounder for breakfast, crayfish, scale fish, or game meat for dinner. For desert you can have pies made with freshly picked fruit from the hotel orchard, topped with fresh cream direct from the hotel cow."

If there is no one attending the bar please feel free to help yourself to a drink and leave the money in the till. (Could you do that these days?)

John Walker sold the hotel and retired in 1926. By then the hotel had grown from the typical six roomed U shaped building to a two storey structure with twenty five bedrooms, all of which had running hot and cold water, complete with electric lighting. Besides fishing, swimming, shooting and boating etc, a tennis court had been built as an added attraction. In one advertisement there is even a mention of golf links, but as yet I haven't found any information on this, or the location. (Can someone help?)

John Singer, formally of the Bush Hotel in New Norfolk, became the new owner and he and his family ran the business for the next seven years, until one fateful day it was burnt to the ground. The cause of the fire was thought to be a fault in the electrical system.

When the Hotel was destroyed in 1933 there was no bridge over the River, it had been washed away in the 1929 floods and the new steel bridge was still under construction. The only way across the River was a barge type punt which wasn't always in operation. Given the rather primitive means of access to the northern shore and the fact that a new hotel called Scamander House had recently been opened on the southern shore, the original Scamander Hotel was never rebuilt.

The Scamander House, which later adopted the name Scamander Hotel, had a rather short life as well; it was demolished in the late 1960s and replaced by the current, more modern Scamander Beach Resort.

Scamander has continued to grow as a tourist and holiday destination, but one can only wonder what it would be like today if only more effort had been put into establishing a more permanent and safer entrance into the river from the sea. Or alternatively, the plans floated about in the 1970s to link Scamander River up with Hendersons Lagoon had been implemented.



The original Scamander Hotel was built on the northern side of the River and opened in 1896.



Scamander House was built on the southern side of the River and replaced with the Scamander Beach Resort in the late 1960s.

Letters to the Editor

Vol. 42, No. 8, 2009

Dear Editor,

Further to Lynne Dawes lengthy letters (Voice 8 September), she has previously suggested that I keep things short, not provide so much explanation or use long words, and use simple dot point, so :

- If you don't like angle parking, parallel park on the other side of the road
- or park in the car park at the Memorial Hall
- put your seat belt on before you turn on the engine and engage gear.

I loved her comment " *the entry and exits allow St Marys a digestible presence in a fast moving society*". Welcome to my world, Lynne.

David Clement.

Editor Valley Voice,

How many times can that old horse of angle versus parallel parking be dug up and flogged, it now has to be an RSPCA matter.

The plans approved by the vast majority of the St Marys residents present at the public meeting of the St Marys Streetscape Committee, and approved by Council that ANGLE PARKING should remain on the southern side of Main Street, St Marys.

That same plan, moved the centre line markings to the north to allow vehicles to reverse back enough to see oncoming traffic without encroaching into that traffic.

The reason why the Department of Infrastructure, Energy and Resources (DIER) has not done this, is open to speculation.

By the way, the Tasmanian Road Rules Handbook Version, 5 June, 2008 published by DIER states: "Drivers must wear a seatbelt when moving or stationary in traffic, unless they are reversing", maybe we all need to update ourselves occasionally with the CURRENT road rules. (Ignorance is no defence in the eyes of the law).

Until the end of December there is a Community Physiotherapist (no cost) every Tuesday at the Community Health Centre, (Doctor's referral is required) for those of you who have difficulty in turning in your seat to see that on-coming traffic.

David Watkins.

Dear Editor,

Recently I had a fall from the St Marys Rivulet Bridge and I broke my glasses and had gravel rash to my face and arms.

I approached Councillor Johns and he helped me draft letters to the Council and DIER.

As a result, DIER reimbursed me the cost of my glasses, and will repair the bridge so that this does not happen to anyone else.

Thank you councillor Johns for taking the time to help me.

Lorraine Gill,
Harefield Road,
St Marys.

To the Editor, Yes it's parallel versus angle once again. All I will say on this matter is...
A wise local man stated in the Valley Voice not that long ago. If you do not like St Marys the way it is...MOVE!!!
Kim Watkins.

Letter to the editor,

My position.

At the September Council Meeting the Council passed a motion to increase the General Manager's delegation to waiver facility hire fees on Council owned or managed facilities from \$300 to \$350.

This means that any community group can apply to have the hire fees waived on these facilities up to the amount of \$350 in a financial year. So if a community group would like to run an event or events in these halls or recreation grounds they can apply to have the fees waived, up to the amount of \$350 in a financial year. Over this the request must go to Council to have waiver.

However under the motion moved by Deputy Mayor Osborne and seconded by Cllr Cato this delegation **will not** apply to the Grassy Bottom Regional Arts.

This community group will have access to the St Marys Hall, Portland Hall and the St Marys Recreation Ground without being subject to the hire fees delegation and this could easily run into thousands of dollars of waived hire fees. I believe that under the Osborne motion that this community group is being favoured over other community organisations and a level playing field is not being used.

Although I voted against this motion, as I believe all community groups should be treated equally, I will continue to support all community organisations within the Break O'Day to the best of my ability with fairness as a priority.

Cllr Johns.

To the Editor.

On several occasions recently, "The St Marys Emergency & Business contacts" page has been published in the Valley Voice.

I would like to commend our esteemed Editor for all her hard work and (I know) long hours to provide us with this most useful tool.

I have inserted my (now updated) page into a plastic sleeve and keep it inside the phone book. It is a quick and easy resource.

Thank you Editor Judy, your wonderful proof reader Maisie, and the paper collating team, for all you do as our "Fourth- Estate -Volunteers", and not just for St Marys, but far beyond, where I understand the VV reaches into both other Tasmanian and Mainland towns.

Kind regards.

Melanie Norton.



Neighbourhood
watch

CGU
METRO

Insurance
ROBERTS

MEETING DATES NEIGHBOURHOOD WATCH. AREA 102

SCAMANDER, BEAUMARIS, UPPER SCAMANDER, FALMOUTH.

MEETING DATES 2009

WEDNESDAY OCTOBER 14TH 7.30PM
WEDNESDAY NOVEMBER 11TH 7.30PM

ALL MEETING ARE HELD AT THE HOME OF MRS SHEILA CHUGG,
2 SCAMANDER AVENUE, SCAMANDER, 7215.



PROUDLY SPONSORED BY AUSTRALIAN PAPER



Letter to the Editor

Vol. 42 No 8, 2009

Dear Editor,

In April The Break O'Day and Glamorgan Spring Bay Councils requested a review by the *Local Government Board* of the implications of an amalgamation without giving any reason for the request, and without identifying any perceived benefits. Consequently residents are confused as to what are the issues and why this matter has arisen.

In response to many requests from ratepayers for clarification, and how to formally express their views to their Council, I prepared a standard letter incorporating the matters they had raised. If individuals believe, without any presence or persuasion by me, that such a document expresses their views, and choose to sign and post it to petition their elected representatives, that is their democratic right. In providing this arms length assistance, I believe that I am fulfilling my duty as a Councillor to assist effective communication between the community and Council.

Following receipt of some 70 such petitions, the Mayor alleged at the Council Meeting of 14th September that I had a conflict of interest in preparing this petition, and has since claimed that I am "stirring up a hornet's nest before any decision is reached". Petitioning Councillors afterwards seems pointless!

The opportunity for submissions by residents to the Board has already come and gone, without the knowledge of most residents. In due course a report and recommendation by the Board will be submitted to the Minister, and to the Councils, but will not be made available to ratepayers before a decision is made by the Councils. Either Council may refuse to accept a recommendation to amalgamate, but residents must express their views formally to their elected representatives, otherwise Councillors may assume by default that everybody is in favour.

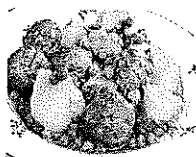
The postponement of Local Government Elections in the two municipalities by the Minister for Local Government to avoid amalgamation being an election issue leaves little other avenue for democratic expression on this matter as it is, and the process to-date hardly meets the requirement of 'extensive community consultation'.

Submissions made by residents to the Board may be read on www.dpac.tas.gov.au, enter "Voluntary Merger" in the Keyword Search, chose "Voluntary Merger Review", then scroll down to the 36 submissions.

Councillor David Clement

Yanni's

Café / Laundromat / Catering



25 Quail St, St Helens, Tasmania. 7216.

Ph: (03) 6376 2629

Mob: 0400 054 110

email: marycporter@bigpond.com

Strawberry Jelly

42 Main St. St Marys Ph: 6372 2684

- **HUGE REDUCTION** on wool jumpers—be quick
- **POT POURRI**—only \$2 a scoop
- **FAIRY** wings wands & costumes
- **TUMBLER STONES** only \$2 each
- **CITRINE**—beneficial for optimism, letting go of the past, self-esteem, self-confidence, concentration, depression, fears, phobias, individuality, motivation, creativity.....

FREE SOAP AND INCENSE.
See in store for conditions.

EFTPOS

OPENING HOURS
MON—FRI 10AM—4PM—SAT 10AM—2PM

e.ScApe

Tasmanian Wilderness Cafe Gallery

NEW MENU

WITH DAILY SPECIALS AND TAKEAWAYS

TAKEAWAY SPECIALS

HOMEMADE SOUP & CRISPY BREAD,
WITH DRINK \$9.00!!

BACON & EGG ROLL, WITH DRINK \$9.00!!

TRADING HOURS

MONDAY - FRIDAY 8.30AM - 4PM

SATURDAY - SUNDAY 9.00AM - 3PM

THURSDAY DINNER

Tonight 5 - 7 FOOTY FEVER BBQ
Next week FISH N CHIPS
\$15 A \$10 C

BOOKINGS ESSENTIAL

6372 2444

FUNCTIONS AND BOOKINGS WELCOME

closed public holidays
and last weekend of each month.

Internet access \$2. - 15 minutes
Laundry facilities \$3.00 per load

ARTS, CRAFT AND HOMEMADE GOODS NEEDED.
PLEASE CALL IN AND SEE ROD.

21 Main Street St. Marys Tasmania 6372 2444

Out & About St Patricks Head & Esk Valley Historical Society



St Marys to Cornwall walk

On Sunday the 20th of September the St Patricks Head & Esk Valley Historical Society in partnership with the Break O'Day Healthy House conducted a walk from St Marys to Cornwall.

The walk followed the path of the "old hands", many of whom walked to work in the coal mine at Cornwall every working day.

Jim Haas led the walk and pointed out a number of historical sites like the old cheese factory in Gardiners Creek Road and the remains of the old flour grinding mill at Rosegarland.

At Struggle Creek, Jim told the story of the murder of Mrs Julia Mulholland who died on the 17th February 1861.

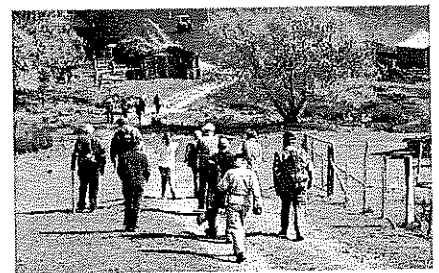
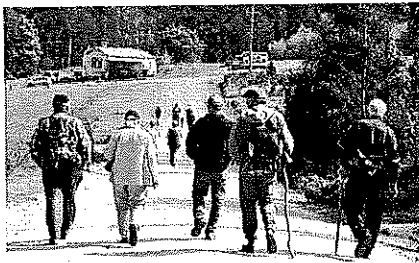
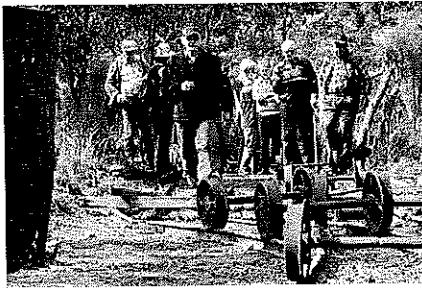
Jim reckons her screams can still be heard if you dare to visit the area around midnight on certain nights.

From there it was a good hike through the bush to Cornwall Park for lunch and a visit to Cornwall Collectables.

While most of the walkers were ferried back to St Marys by motor car, two brave ladies apparently came for the exercise, or they didn't trust our driving, because they walked back.



Healthy Active Program





Forestry Tas. cookin' up a treat at Evercreech

More than \$70,000 has been spent improving facilities at the Evercreech Forest Reserve near Mathinna.

Earlier this year the road bridge access to the reserve was replaced and the main picnic shelter was reroofed with shingles split on the site from a fallen tree.

Forestry Tasmania has now installed a new double gas barbecue and shelter roof at the popular recreation spot.

The project supervisor, Wayne Radford, said the work demonstrated Forestry Tasmania's commitment to maintenance and constant upgrading of public facilities at its reserve sites.

"Installing the gas barbecues means visitors will have the convenience of being able to cook without the need of bringing their own or finding firewood.

"And in summer there's the very real safety benefit of being able to have a barbecue without the risk of sparking a bushfire," Mr Radford said.

He said Evercreech, with its spectacular examples of giant white gum trees and two interesting walks, received many visitors throughout the year and was included in the widely-used Sixty Great Short Walks of Tasmania booklet. Mr Radford asked for visitors to be considerate of others by not taking too long to cook and leaving the plates clean. "It's a terrific place for some quiet recreation and no one would want their time spoiled by others being careless or rude."



*Brian Rose (on the ground) and Dave Lowe
put the finishing touches to the new
Evercreech Forest Reserve barbecue.*

OUT OF THE WOODWORK Wendy Brennan, Secretary

In my previous article I forgot to give a mention and thank you to Dave Evelyn for participating at our Open day with the Riding for the Disabled. My sincere apologies Dave.

Thank you, to Graeme Haas who offered not only his services free but the use of a small wood mill. It was very much appreciated Graeme from all club members.

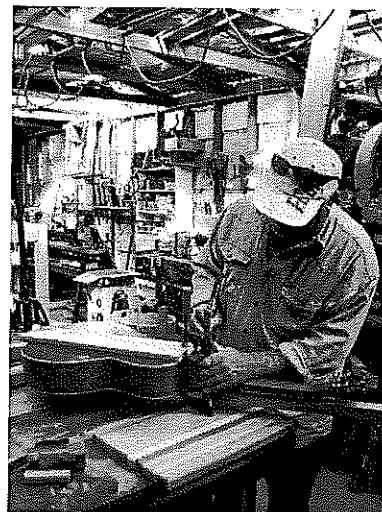
The Guild has received a gratuitous personal cheque from the Hon. David Llewellyn with a letter of thanks for the Guild's continuing contribution to the community.

Members have made and sent a breadboard made from Tassie timbers as a token of our appreciation for his kind gesture. Right, is a photo of one of our clever member Ted Koops repairing a Dobro resonator guitar. The Dobro was designed in the forties before the electric guitar, for its volume and is now considered old and rare.

I hope this gives people contemplating joining our organisation, another overview of what we can do in regards to woodwork.

The Guild meets on the last Saturday of the month at the Old Railway Goods Shed at 2.00 pm.

The Guild is open Monday, Wednesday, Friday and Saturday. Any other times by appointment.



CALTEX ST MARYS
MECHANICAL REPAIRS & SERVICE

PH: 6372 2535

41 Main St, St Marys Tas 7215

Fax: 6372 2822 Mob: 0419 503 109

CAR WASH IS BACK!!

Property for sale

50 - 52 Gardiners Creek Road
St Marys

Modern near new 3br home, detached rumpus room with ensuite and double garage.

Situated on approx. 1300m², this unique property has unspoiled valley and mountain views.

Price: \$275,000.

Extra land available with this property by negotiation.

Phone Chris or Tanya Wright on:
6372 2258 or 0417 344 209.

Country Music Gospel Service

St. Marys Country Music Gospel Service 2009

People were standing up and clapping, singing with all their hearts, laughing at Mulga Bill's version of heaven, and even dancing along with the music. Yes, church *can* be a lot of fun!

Talented groups from St. Marys, St. Helens and Launceston used their skills to give praise to God and encourage some great singalongs from the gathering. Well over 100 people came together and they almost raised the roof with their hearty singing.

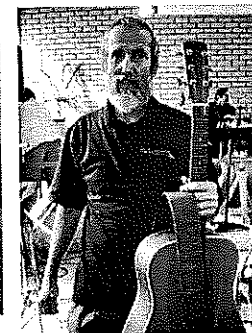
The Bush Telegraph message was challenging and thought-provoking, and many also took the opportunity to lay their burdens at the foot of the Cross and accept encouragement and prayer. To top it all off, the tables were groaning with good food and the air full of conversation after the service was over.

Many thanks to everyone who took part. Whether it was doing music, dancing, listening, clapping, cheering, eating, washing up, serving, setting up or clearing up, we couldn't have done it without you!

Is it happening again next year? Well maybe it is ... we'll keep you posted!

Rita and Ian Summers ☺

All photos by Margit





St. Marys Tigers Football Club Inc.

I'm sorry that our news has been a little sketchy over recent weeks but I can assure you all that there has been a lot going on behind the scenes. I am now in a position to explain exactly where we are and what the future holds.

I mentioned in our last report that our approach to the Oatlands and District Football Association had initially not been productive and due to a number of on-going issues we eventually withdrew our application.

The difficulty facing St Marys in the current environment is that our three most ardent and traditional football opponents (Fingal, St Helens and Swansea) presently compete in three different associations (as an aside the structure of each of these three associations is different in terms of the teams fielded). This makes it difficult for St Marys because we are located at the geographical extremity of each of the three associations. Therefore travel becomes a major issue and we are reluctant to commit our teams to extensive travel and all associated costs. It is difficult to justify 4-5 hours of travel to play 100 minutes of football.

This also makes it difficult for us to be accepted by any association because of the additional travel incurred by their clubs; travel was by far the major issue with our proposal to join the ODFA.

We also feel there is little point in joining an association where we have little in common with our opponents – this in no way is meant to imply any disrespect to any club but it is always the case that the closer the club the more intense the rivalry; this in turn translates to bigger gate receipts and increased canteen and bar revenue – the lifeblood of any football club.

It is on this basis that we wrote to all the football clubs in our area with perhaps a “romantic” notion that we could generate some interest in getting the old Fingal Valley Association reformed. St Marys Football Club hosted a meeting held on 16 September which was attended by representatives from Fingal and St Helens Football Clubs. We had also held earlier discussions with Swansea Football Club. We had also written to Campbell Town and Triabunna Football Clubs but did not receive a response.

While Fingal, St Helens and Swansea indicated that they are committed to their respective associations for season 2010 neither of these clubs discounted the possibility of participating in a revived Fingal Valley Association at some time in the future. Obviously no commitments were made but where there is a glimmer of hope there is an air of optimism that leads you to keep trying. We all did reach agreement however to meet occasionally during 2010 to review the matter.

The St Helens representative suggested we seek entry into their competition (NEFU) but we are not confident that we could meet their requirements of a competitive senior, reserves and under 16 team in our first year. Travel is also a major obstacle with teams as far away as Bridport and Lilydale participating in this competition.

So where are we now? All dressed up with nowhere to go is perhaps the best description.

Our initial attraction to the ODFA was that they only field one team which we felt St Marys could achieve in our first year of operation. With that option gone and with the work required to come up with an alternative approach, organise meetings etc. We have pretty well run out of time as far as 2010 is concerned. While our committee is still enthusiastic and dedicated most people associated with football clubs are “footballed out” at this stage of the year and it is becoming increasingly difficult to generate any enthusiasm about our cause with other football clubs.

So finally, where do we go now? Well, most importantly, we are not going to give up or fold. At this stage we think that in order to maintain our existence and profile we will try and organise a “super rules” (35yo and over) social competition in 2010. Early indications are that there would be a reasonable degree of interest and we could organise a number of social matches and carnivals throughout 2010. While perhaps not the perfect result it would at least keep the club going and allow us to continue our efforts to participate in a meaningful competition with a “local” flavour at some stage in the future. As anyone that has ever been involved in the running of a football club knows too well, an awful lot can change in a season.

Our next big challenge is to get as many players and spectators to our modified rules social “scratch” match at the football ground on Friday 2 October 2009. We certainly hope as many of the St Marys “old boys” as possible turn up to play or at least contribute to the atmosphere. Also if you know anyone that might be interested who mightn't see the Valley Voice, give them a call and invite them along.

There will be a bar and a sausage sizzle and our local police sergeant Derek Singline has kindly volunteered to umpire the game. We will put up some flyers around the town but please mark the 2nd of October in your diary.

Otherwise – watch this space.

Harry Veldums,
Club President.

St. Marys Tigers Football Club, P.O. Box 42 St. Marys Tas 7215
Ph. (03) 63 722256
Mob. 0418564710

St Marys People are Blooming Beautiful

All the best of luck to Isa and Peter Witton on their wonderful attempts to beautify the business community of St Marys with Pots and Plants.

The businesses which have backed your endeavours are looking a treat..

We know more businesses have already come on board with pots and plants to go up soon.

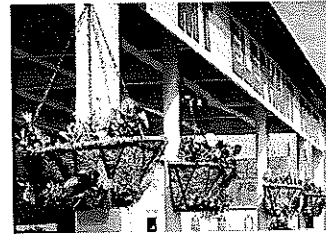
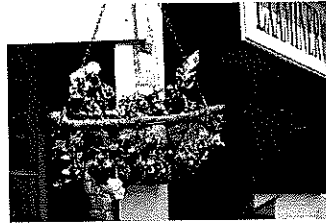
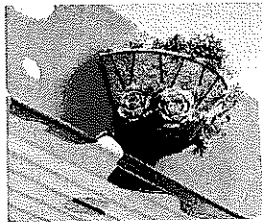
We can't wait to see every business support you, and our town. You are really brightening up St Marys!!

Also, a big congratulations to Isa Witton once again, and Marguerite McWatters on the upkeep of the garden around the town hall, and the circular beds around the base of the trees along Main Street.

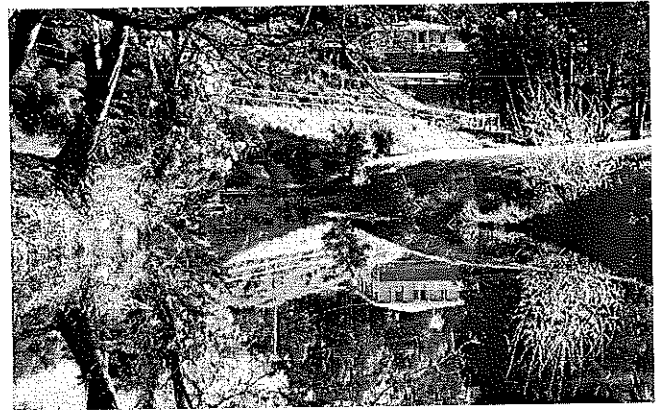
In the recent "makeover" Council unfortunately grassed many of the beds over.

But now after many hours and days of your hard work, the beds are looking blooming wonderful again.

Photos: Courtesy Peter Troode.



Yes we have had some sunshine! Kim, Kelly & Trevor plus canine friend, last week enjoying the warmth.



What a shame we don't print in colour! This is an absolutely brilliant photo of the reflections in St Marys Rivulet, taken by Peter Troode on a beautiful spring day.

Scamander Beach Surf Shop

6 Lagoon Esplanade
Scamander

Ph: 6372 5529

Scamandersurf.com

Bathers Wetsuits DVDs
Clothing Footwear
Bodyboards

Watches Jewellery

Surfboards:

Milch McTavish
Surftech Bic G Boards

Bay Surf Shop

2 Pendrigh Place
St Helens

Ph: 6376 1755

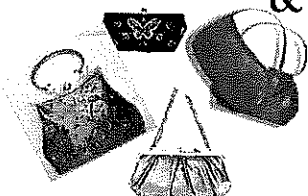
MAIN STREET CLOTHING



Leaver's Dinner Special



Buy an evening bag
& get a **FREE** lip balm
(until end of Nov.)



Exciting new season stock available now

& arriving weekly

including....

*Jim Beam, Bundy, AFL, Benlo, Tinkerbell, Elmo, Dora,
& much, much more....*

The Say Cagerattler.

Remember a few issues back we talked about the need to engage in this area's numerous natural and historical assets and maybe even showcase those assets? Guess what. Someone has had the same outlook and has done much more than my comments by calling a meeting of interested parties on Thursday October 22nd at Fingal Hotel.

Greater Esk Tourism is running a workshop with the hope of developing concepts, ideas and networking with the aim of encouraging and defining a pathway for new opportunities.

The phone call I made from the number provided led me to twenty minutes of exciting conversation from one very passionate person who is keen to develop a genuine strategy that enables both old and new people in tourism to help put their ideas into fruition if it's possible to do so.

She filled me in on numerous concepts and interactive ideas and a desire to see us all help each other out and lend support where ever possible. I won't even attempt to go into nuts and bolts of what my correspondent told me but, suffice to say, it is a truly exhilarating idea to say the least and I'd strongly suggest you ring 03 6385 2002 and talk to this person about an opportunity to take part in developing our area. To attend the workshop it is desired that you R.S.V.P. by October 9th. Please do yourself a favour, as they say in the classics.

A big thank you to another very passionate couple who, last Friday, showed me a hidden treasure that exists very close to our town. It's funny how you can live in the orchard so to speak, but not eat the fruit. That is exactly the case here. This couple have some wonderful ideas and contributions to make and I hope they get the chance to bring these ideas through and in turn make our town a little bit more enticing to stop for a while. These 'newcomers' (about six years ago) have done so much already and could be an inspiration for many of us that just sit in the orchard but don't pick the fruit. How many of us does this apply to do you reckon?

What do you think?

SPLASH

ST MARYS

You swill it, we fill it!
You dump it, we pump it!

**Water cartage
Septic pumping
and tipping work
(10 yard tipper)**

Contact: Mick

0488 777713

Council Watch

The following issues raised at The Break O'Day Council Meeting of 14th September may be of interest to those unable to be in the Public Gallery.

- A motion was passed limiting the amount of hall hire charges that can be waived by the General Manager for any community organisation to \$350 per year. A further motion was then successfully moved 5-3 by Cllrs Osborne and Cato specifically to allow Grassy Bottom Arts unlimited access to the St Marys Hall, the St Marys Recreation Ground and the Portland Hall without payment of any hire charges or payment for power.
- I have been asking for 10 months for details of what the St Marys Main Street Makeover grant has been spent on, but have been told the Council doesn't have the resources to provide a financial accounting. I asked again what the grant has been spent on, but, in line with another of Council's recently adopted procedures, the Minutes are not to show that a Question Without Notice has been asked, or to show the Question or the reply.
- For the fourth time a proposal came before Council to allow a 200' high mobile phone tower to be erected at St Marys. Council refused consent at its August meeting for a Development Application to be lodged for a tower on the Recreation Ground, attached to the old fire station building. However, Optus were subsequently advised that the transfer of the land in question from the Crown to Council had not yet been completed, so that it could still apply to the Crown for permission to make an application. Council then reversed its August Decision, and gave support for Optus to approach the Crown for permission to lodge a further application to Council. Optus has stated that it has identified 7 possible sites, but these sites have not been disclosed, and has rejected an offer from a land owner within a kilometer or so further down Harefield Road to site the tower, saying it was too far from the centre of town.

David Clement- Councillor

Council Agenda and Minutes can be accessed at:
www.bodc.tas.gov.au



The Roost takeaways

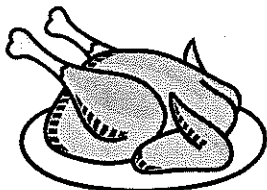
Barbecued chickens

Great coffee

Fresh fish & chips

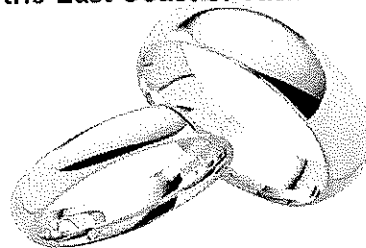
Hamburgers, Chickenburgers

St Helens
Tasmania 7216
Ph: (03)6376 2613



Civil Marriage Celebrant

I'm Peter Power and I am a qualified
Civil Marriage Celebrant servicing
the East Coast of Tasmania.



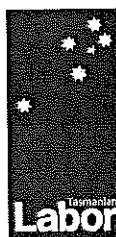
I will help you plan, prepare and create a
ceremony that you and your family &
friends will cherish and remember forever.
I will look after all of the legal paperwork
all you have to do is relax and enjoy your
special day.

I am also a Justice of the Peace as
appointed by the
Tasmanian State Government.
Awarded the Professional Service award by
the
Chamber of Commerce.
For more information, please contact me.
www.peterpowercelebrant.com.au
Ph: 0417017105

Advertisement

David Llewellyn

Your
LOCAL
Member
for
LYONS



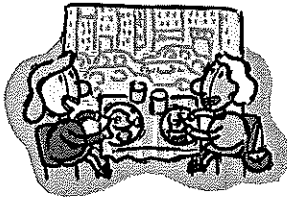
For appointments call
6233 6454

Authorised by David Llewellyn
Parliament House, Hobart



SENIOR CITIZENS DAY

Monday 5 October, 2009 @ 12 noon



If you would like to have a "fun day" with your peers come and enjoy a free lunch at



Something Fabulous Forum Complex, St Helens followed by a free movie at the Forum Cinema

Rsvp is essential - please contact Council on 6376 7900 by Friday 25 September, 2009



If you require transport, call Jenna at Council and we will arrange to have you collected and returned home after the event

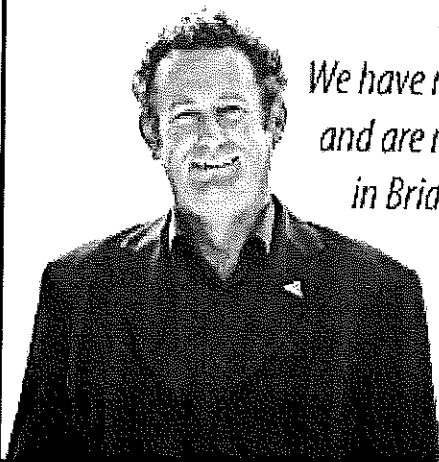
Tim Morris MP

Tasmanian Greens Member for Lyons



Tasmania

*We have moved office
and are now located
in Bridgewater!*



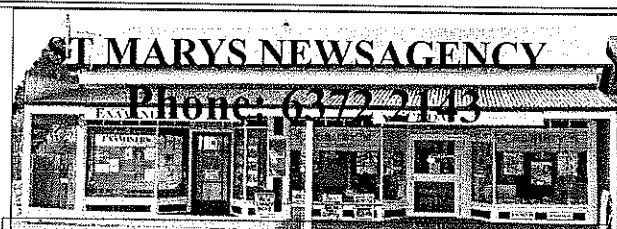
New Address: Shop 9, Covehill Shopping Centre, Bridgewater 7030

Phone: (03) 6263 3801

E-mail: greens@parliament.tas.gov.au

www.tas.greens.org.au

Authorised by Tim Morris MP Parliament House, Hobart 7000.



ST MARYS NEWSAGENCY
Phone: 6372 2143
Open 7 days a week for your convenience.
6am - 7pm Mon. to Fri. 7am - 6pm Sat. & Sun.

CALOWS BUS DEPOT

AURORA PAYG

WIN!!

**A FARMER'S UNION
DART BOARD**

Just buy a farmer's union coffee and you are in with a chance to win.

NEW DVDs JUST IN
MALL COP
EASY VIRTUE
LATEVIEW TERRACE
KNOWING
THE BOAT THAT ROCKED

DOING THE ROUNDS

Cllr Reon Johns.

Like to raise an issue? Feel free to contact me on mobile 0429 722 091 or Fax 6372 2098

At the opening of the Council meeting Cllr Clement stated that the minutes should reflect what took place at a meeting and the discussion section of item 8.2 from the August Council minutes were insufficient, in that the draft minutes had the words "no discussion of significance took place", when in fact there was a considerable amount of discussion and the draft minutes be amended. The motion was not supported and lost 6-2.

70 petitions were presented to Council, opposing the possible merger of the Break O'Day and Glamorgan -Spring Bay Councils.

Cllr Clement moved to have the Planning Scheme amended in respect of the Precautionary Principle. Cllr Clement advised that this would allow consideration to be given to decisions that may affect human health and safety and that council has an Officer who is trained to identify these issues. This motion was seconded by Cllr Johns, but was lost 6-2.

Cllr Clement moved a motion to Review the rating basis for the Break O'Day municipality, this was seconded by Cllr Johns. This issue has been raised at Public question time regarding the current AAV system. Cllrs Clement and Johns argued that council be proactive and start to investigate this issue over a period of time, instead of waiting for other councils and the State Government to make submissions. Cllr Cato stated that this motion should be deferred and that council waits till a review is done and this would not waste council staff resources. This motion was lost 6-2.

Deputy Mayor Osborne moved that the Council support the Little Athletics with a financial donation of \$1000. The Little Athletics generally carry out their own maintenance, however the high jump is in need of an upgrade and this donation would help with the financial burden. Carried unanimously.

Cllr Johns moved a motion that council gives its in-principle support to the St Marys Association for Community Development to develop and promote walking tracks in the Fingal Valley. This was seconded by Cllr Clements. Mayor Legge stated that there are a number of issues that need to be overcome in trying to implement the proposal. The motion was carried unanimously.

A garbage remission was passed for a property on the Esk Main Road.

A rate remission for waste management in Ansons Bay, St Helens was refused.

Cllr Johns moved, seconded by Cllr Clement, that the council authorised the Acting Works Manager to request DIER to consider a reduction of the speed limit through Weldborough from 60 to 50 kmph.

The Community Development Officer advised that a grant of \$50,000 was applied for, for the St Marys Community Kitchen.

Council decided that donations received from the recycling stations at Scamander and St Helens be distributed equally between St Marys and St Helens Hospital Auxiliaries.

Moved Deputy Mayor Osborne and seconded Cllr Clements that council participates in the "Planet Footprint" two year service agreement.

The General Manager recommended that the current delegation form the waiver of Facility Hire Charges for Council owned and managed facilities be increased from \$300 to \$350, in any one financial year. This amendment allows a waiver with an annual limit irrespective of number of requests from community groups. Carried unanimously.

Deputy Mayor Osborne moved that the council rescind the previous decision to grant a lease to the Grassy Bottom Regional Arts and replace it with a waiver of hire fees for Council facilities utilised by the group, these being the St Marys Hall, Portland Hall and the St Marys Recreation Ground. This arrangement is reviewed each financial year. This was seconded by Cllr Cato. Passed 5-3.

DO YOU KNOW?

That the Council has installed security devices on all the doors at the Council Offices at St Helens. This is to stop unauthorised members of the public from entering the Offices, it also stops your elected Councillors from entering too.

Please note that I have changed my visits to the LAST Thursday of each month.

I will be in Fingal. At 08:30 to 9:30 at the Neighbourhood House, Mathinna from 10:00 to 11:00 at the Post Office. St Marys, 12:00pm to 1:00pm at the Bakery. Then on to St Helens Neighbourhood House from 2:00pm till 3:00pm. Mouth Café Scamander from 3:30 to 4:00

I would like to invite any other Councillor to share this article with me and help keep the Break O'Day informed.

Grassy Bottom Regional Arts

Community Arts news

IDEAS FORUM



ON: October 7th, 2009

AT: Happy Belly Deli

FROM: 6pm

Grassy Bottom Regional Arts invites all Community Members and Artists to join us for an **Ideas Forum**. Come and have your, most valued, input into the direction of Community Arts in this vibrant community. Come and enjoy a wine and cheese whilst brainstorming and gathering ideas which will then help us create the direction for this coming year's community arts events and activities.

This is your opportunity to have input and to meet the new committee... so don't miss out...be there!

ADAMS SPEAKS OUT ON MILK PRICES

Dick Adams, Federal Member for Lyons, this week spoke in the House of Representatives on a motion regarding milk prices to Tasmanian Farmers.

Mr Adams said that he believed that there had been some deregulatory changes that had not worked in favour of primary producers, which had led to two major overseas companies taking a large share of the market.

"Tasmanians have had a tough time – because we have had a very severe drought for some years and there has been an enormous effort to start drought proofing land in order for farmers to plan their future investment.

"Then we had floods which have caused problems with spring calving and generally causing problems because of the long term drought.

"Now with the market concentrated into two companies in south-east Australia – it is leaving little option for proper competition to work," Mr Adams said in his speech.

Mr Adams said that he hoped that the Senate enquiry, which was being spear headed by Tasmanian Senators, would offer some assistance to the situation.

"I would encourage any one who can, to take part in the Senate enquiry. This is a way to put a face to the issue and have your thoughts heard," Mr Adams said.

Mr Adams said that he would continue to talk to both producers and manufacturers to get a clearer picture of what was happening.

"I'll be looking to see what farmers need to help them negotiate sustainable contracts for their domestic fresh milk production," Mr Adams said.

"The greatest revolution of our generation is the discovery that human beings, by changing the inner attitudes of their minds, can change the outer aspects of their lives"
William James 1842-1910

Dick Adams MP

Federal Member for Lyons

Please contact one of my offices if I can be of any assistance

53B Main Road
PO Box 50
Perth, Tas 7300
Ph 6398 1115

58A High Street
PO Box 271
New Norfolk Tas 7140
Ph 6261 3366

Toll free 1300 132 689

Email D.Adams.MP@aph.gov.au



**WORKING WITH YOU AND
YOUR COMMUNITY FOR THE
FUTURE**

Written and Authored by Dick Adams, 53B Main Road Perth
Tas. 7300

East Coast Phone & Communications

- * Telephone & Data cabling
- * Commander Systems
- * Sound System cabling
- * TV Antenna & Tuning
- * Digital Set Top Boxes, supplied & installed where reception available.



PO Box 29,
St Marys 7215
Ph: 6372 2402
Mob: 0409 959 121

John Heron
30 years
experience
ACA Licence

MLN

ENTREPRISES

east Coast & fingar valley

INTERIORS

EXTERIORS

PATIOS

ROOFS

FREE QUOTES

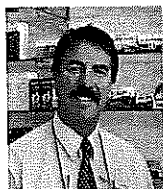
MICK: 0439 722 718

St Marys Pharmacy

For all your health and wellbeing products

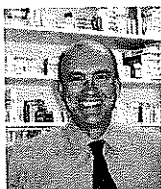
Pharmacist on duty 5 days a week

Main Street, St Marys Tas. 7215



Kelvyn

Call in and talk to us about any health problems. Or discuss your medications. Our friendly staff are only too willing to help with any problem.



Andrew

Phone: 6372 2844 — Fax: 6372 2874



St. Helens Electrical

ROD SHAW
LIC: C00489

Domestic, Commercial, Industrial:

*Wiring and Repairs, Rewires,
Underground.*

Home Heating:

*Advisory, Sales & Installation of heat
pumps and fixed heaters.*

Lighting Specialist :

*Interior and exterior, Advise,
Sales and Installation.*

Ph: 6372-5522 Mbl: 0407-615-072
2 Lagoon Esplanade, Scamander 7215

Ransley's Appliance Service

P O Box 136
Scamander Tas 7215

- ° Washing machine NOISY?
- ° Refrigerator runs too LONG?
- ° Clothes dryer blows cold AIR?

Then you need the service
of our technicians.

Ring us on: Scamander: 6372 5307
Mobile: 0428 761 811



Support a mate

What to do if you think that some-one
you know is at risk of

SUICIDE.

What are the signs of Depression?

What could you say and do to support your mate.

Where can you encourage your mate to go for
24 hour assistance?

What do you do if your mate refuses help and you are
very concerned about their safety?

Who looks after you?

These questions are some of the questions that will be
answered at a meeting to be held at

St Mary's Hotel

Wednesday 21st October, 2009

12.00 noon to 2.30 p.m

Enquiries can be made contacting

Shan Williams 6372 2111 Or

Helen Jennings 6376 5244.

Lunch will be provided

This opportunity to learn more about helping your mate
has been arranged by the

**Department of Health and Human Services,
St Mary's and St Helens Hospitals.**

Happy Belly

DELI

26 MAIN ST. ST MARYS.

NEW HOURS — NEW MENU

FOR ALL YOUR

LOCAL AND IMPORTED

GOURMET MEATS, CHEESES, AND

ORGANIC SOURDOUGH BREADS.

**WE SERVE ORGANIC
FAIRTRADE JASPER COFFEE.**

**FOR SNACKS & LUNCHES.
CATERING AVAILABLE**

PHONE: 0404 725 430

TRADING HOURS

OPEN : MON - FRI, 9AM - 5PM.

RUMOUR HAS IT....

**Congratulations to Patrick Wells on his upcoming
nuptials. We hope that you both will be very happy and
wish you all the best for the future.**

From your friends in St Marys.



Calling all Teddies
Come and join **Spike,**
Rupert and Winnie,
3 Very Special Bears
at



Teddies on Parade

Where: Portland Hall, St Helens

When: October 31st 10am—4pm

Who: all Teddies with a history,
much loved and special.

Any size Teddy is welcome.

To book a place, contact Kay or Eva at Information
Centre 6376 1479 and register your interest or
e-mail to historyroom@bodc.tas.gov.au for the
Friends of the History Room.



BEST FRIENDS EXHIBITION

From earliest times, humankind has sought to capture the
very essence of animals in art—from the enigmatic cave
paintings of Lascaux and the indigenous Kimberley rock
art through to stunning Egyptian lifescapes and beyond.
Art, ancient and contemporary, continues to examine and
explore the very nature of animals and their relationship
to us.

This fund-raising exhibition, 12 months in the making is a
funny, moving and exhilarating exhibition, comprising
stunning works from eighty professional artists in a range
of mediums and disciplines, and celebrates those unique
bonds between humans and their pets.

Best Friends will be held in conjunction with RSPCA
Awareness Week, (1 – 8 October) and opens with a gala
cocktail party Friday October 2 at the Academy Gallery,
Inveresk.

Tickets are \$35 and must be pre-purchased.

If you have ever had a best friend of the animal world you
shouldn't miss the opportunity to reminisce at this very
special exhibition.

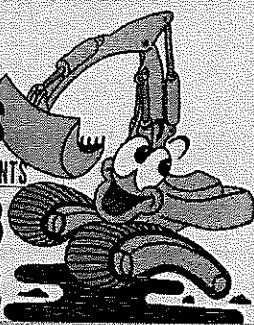
(Valley Voice proudly supports the RSPCA.)

C & D EXCAVATIONS

FOR ALL YOUR EARTHMOVING REQUIREMENTS

Phone : 03 6372 2033

Mobile : 0439 722 032



LOCAL OWNER - OPERATOR OVER 20 YEARS EXPERIENCE

Ph : Dana or Craig 6372 2033 /0439 722 032

If the earth doesn't move for you, let us help !

- ◆ 2 x 20 TONNE EXCAVATORS WITH TILT BUCKET &
RIPPER, ROCK & LOG GRAB & QUICK HITCH
- ◆ D 65 KOMATSU DOZER, RIPPER & TILT BLADE
- ◆ 10 YARD TIPPER
- ◆ COMPACTION ROLLER
- ◆ 4 WHEEL DRIVE TRACTOR & SLASHER
- ◆ DAMS
- ◆ ROADING
- ◆ SLASHING
- ◆ FIRE BREAKS
- ◆ LAND CLEARING
- ◆ HOUSE SITES
- ◆ BRIDGE CONSTRUCTION
- ◆ ROAD GRAVELS AVAILABLE
- ◆ AND MUCH MORE

Stallholders Market Inc.

Is a non profit organisation holding markets every Saturday
from 8am in St Helens, at the Library car park.

There is a variety of stalls and the fees charged to stall holders
is donated to various charities.

For stall booking or any other inquiries, please phone Sylvia
on 6376 8390. Saturday mornings only:0447 589 803.

I would like to order ____ tickets to the Best Friends gala cocktail party on Friday October 2 at the
Academy Gallery, Inveresk. Please send to:

Name:

Address

Ph: Email:

Please find enclosed my cheque/money order for \$.....

OR please debit my credit card for the amount of \$.....

Name:

Number:/...../.....

Exp:

Signature





ST. MARY'S (from a sketch by the Author).

ANSWER:

The drawing is of the original Catholic Church, St Marys, located almost directly opposite the Cornwall turnoff on the Esk Main Road, where the cemetery is to be found behind the hawthorn hedge.

Probably drawn from a spot about 100m past Cullenswood Anglican Church looking west towards Fingal. The Church was built in 1859 on one acre of land donated by Sarah and Thomas Ransom of Killymoon, but was referred to as St Marys, Cullenswood, as at that time the property was the centre of the district.

In the same way the Tasmanian Inn about 800m up the road was referred to as at Cullenswood, but was located on Londavra land.

The St Marys township was only surveyed at the end of 1857. The church was deconsecrated in 1899. The building was eventually moved to Newman Street to become part of a private residence. The cemetery includes many early pioneers of the District, including settlers from the German States who arrived at Hobart on the "America" in 1855.

Pre Fab Shed Construction
& Property Maintenance

Mal
Mob: 0417 328727
email: eehhaat3@hotmail.com

Rae & Partners
Lawyers Barristers & Solicitors
93 York St Launceston

Visiting :

St Marys Community Health Centre
Alternate Tuesdays : 9 am – 10 am

Ph: 6337 5555
For appointments

Calls for Public Comment on Tasmanian Mountain Bike Plan

Sport and Recreation Tasmania is calling for public comment on the Draft Tasmanian Mountain Bike Plan.

Executive Director for Sport and Recreation Tasmania, Craig Martin said the plan will guide the future development of mountain biking opportunities in Tasmania.

"A Tasmanian Mountain Bike Plan will provide a framework for developing and marketing mountain bike opportunities in Tasmania and was one of the recommendations from the Trails Tasmania Strategy," Mr Martin said.

"This plan was made possible when the state government committed \$4 million in the 2008/09 state budget to support tracks, trails and city bikeways."

Mr Martin said the response has been positive and the Draft Plan represents the final consultation stage of the project.

"The Draft Plan was developed after extensive consultation with mountain bike riders and land managers.

"Over 170 mountain bike riders and 40 land managers attended forums in three regions and over 560 individuals completed on-line surveys as part of the consultation process.

"I encourage any interested individuals and organisations to have their say on the Draft Plan by 11 October 2009."

The Draft Plan is available on the Sport and Recreation Tasmania website at:

www.development.tas.gov.au/sportrec/mtbplan.

Individuals wishing to comment on the Draft Plan should e-mail the consultants at info@inspiringplace.com or write to Tasmanian Mountain Bike Plan, Inspiring Place, 208 Collins St, Hobart 7000, by 11 October 2009.



BOBCAT HIRE

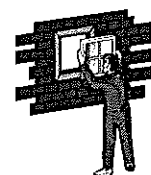
- * Site cleaning & leveling
- * Excavations
- * Post hole digging
- * Landscape preparation

SAVE HOURS OF HARD WORK.
GIVE MARK A CALL
Ph: 6372 2145.

EAST COAST GLASS

Falmouth Ph: 6372 5361

- ▶ Glass repairs
- ▶ Shower screens
- ▶ Wardrobe doors
- ▶ Double glazing
- ▶ Aluminium windows
- ▶ Security doors



Locally owned and servicing
the East Coast.

Call David and Anne Cannon
for prompt and reliable service.

Premier receives Social Inclusion Strategy

Premier David Bartlett has accepted Tasmania's Social Inclusion Strategy on behalf of the State Government and explained why social inclusion is something he is very passionate about.

"I don't come from a privileged background - but I have been fortunate due to the opportunities I was exposed to along the way.

"I want to make sure every Tasmanian has these same opportunities to be the best they can be and to feel a sense of belonging in their own community.

- The opportunity to access good nutrition
- The opportunity to have a great education
- The opportunity to access transport
- The opportunity to participate in their community.

"That is what social inclusion is all about.

"That is what this strategy is all about," Mr Bartlett said.

"I know from listening to people on the street, and this is supported by research, that many Tasmanians are excluded from participating in society because of the disadvantage they experience.

"Fixing the problem is not easy or straightforward, but this Government is committed to doing it."

Mr Bartlett said many of the barriers that people face could be addressed but when a number of factors come together, they can create a complex situation that can only be tackled over time and with the combined efforts of government, community and business.

"Social inclusion is about all of us and so must be the solutions.

"This strategy is an important step in determining how we can all work together to find solutions to these complex problems."

The report by Social Inclusion Commissioner Prof. David Adams, details 10 strategies for supporting Tasmanians at risk of social exclusion. It also provides examples of action that could be taken by government, business and the community.

"We commit to responding in a timely fashion and implementing recommendations as soon as we are able," Mr Bartlett said.

"I believe all Tasmanians deserve an equal chance at making a good life for themselves. We have already started implementing community based solutions to help make that goal a reality.

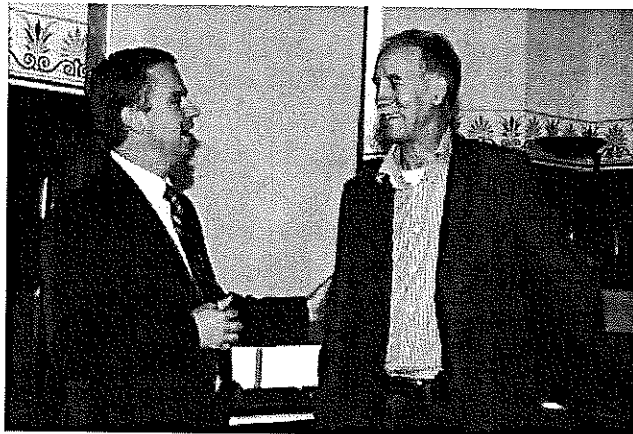
"The \$1.5 million Tasmanian Community Transport Trust is providing a new grant program that will help communities purchase vehicles to meet local transport needs.

"\$1.04 million has been committed over four years to supporting the Volunteering Tasmania program, which will encourage Tasmanians to think about what they can do to give back to their local community.

"We are also providing \$60,000 each year to support three food vans operating across the State - Gran's Van in Devonport, Mission Beat in Launceston and Loui's Van in Hobart.

"These are examples of early actions that will support future initiatives stemming from the Social Inclusion Strategy."

Mr Bartlett said the Government's response to the strategy would be released in late October 2009.



Premier David Bartlett, left, & Social Inclusion Commissioner Prof. David Adams.

ST MARYS OP-SHOP

TRADING HOURS:
10AM — 3.30PM MON TO FRI.
PH:6372 2733.

**Come on in for Doona covers, jackets,
jumpers & more!
We have heaps of 16 plus sizes and shoes
for all!**

**Enquiries—Ph: Tracy.
6372 2733.**

HARRIS FUNERALS

Lindsay & Diane
(D. Bailey & son) A.F.D.A.
Ph/Fax: 6376 1153 Mob: 0418 133 420

Office & Residence:

114 Cecilia St
St Helens

Chapel:

46 Tully Street
St Helens

**We are here when you need us
to arrange Burial or Cremation.**

Pre-paid and pre-arranged funeral plans are available.



Highlighting Alcohol Risks During Pregnancy

A new information booklet has been launched to help health practitioners raise awareness about the risks of alcohol consumption during pregnancy on a child's development.

The Labor Member for Lyons, Heather Butler, has launched the Prenatal Exposure to Alcohol and Prevention Handbook.

Ms Butler said the handbook had been developed by the Drug Education Network – a leading voice on Fetal Alcohol Spectrum Disorder or FASD.

"Alcohol consumption during pregnancy has been identified as one cause of birth defects and mental or developmental disabilities in children.

"However I understand FASD often goes un-identified and therefore is under-reported because many of the problems it causes can be attributed to other factors.

"Some of these problems include issues with a child's learning, behaviour, attention, sleeping, memory or understanding.

"The positive thing is that FASD is 100% preventable if a mother doesn't drink during pregnancy or when she is trying to conceive.

"There are many complex reasons why woman drink alcohol during pregnancy, however it is important that they are made aware of the risk and given help and support.

"This is why the new booklet is so useful for health practitioners who by their very nature are busy people.

"The booklet not only aims to raise awareness of the problem, but also provides tool for health providers to actively screen for alcohol use during pregnancy.

"Last year the Drug Education Network produced a document on Living with FASD: A Guide for Parents and Caregivers.

"I understand this document was highly sought after and I only hope the new booklet launched today will be just as popular.

"There is a lot of advice and instructions out there for expectant mothers which can often be daunting.

"With some help from their health care providers this advice can be de-mystified and mothers can do everything they can to ensure they have a healthy and happy baby," Ms Butler said.

Update on H1N1 Influenza in Tasmania

The Acting Director of Public Health, Dr Chrissie Pickin, says the first wave of the H1N1 influenza pandemic in Tasmania appears to be over, but has warned of new challenges ahead.

Dr Pickin said public health authorities had spent the past eight weeks monitoring the virus as much as possible in the absence of widespread testing.

"I feel comfortable in saying that all the signs point to the first wave of the epidemic as being behind us, but the danger is still present," Dr Pickin said.

"Six H1N1 related deaths have been reported to public health officials so far.

"What is clear is that fewer people than predicted became infected with H1N1 Influenza which of course is a positive result from a community and public health perspective.

Dr Pickin urged Tasmanians not to become complacent.

"H1N1 Influenza has not gone away – it continues to circulate in our community and it may cause death and severe disease in a small number over the summer.

"It is also expected to hit the community with renewed strength in a second wave sometime in the next 9 months.

"Because the virus is unpredictable, we don't know whether it will be more severe or when it might hit.

Dr Pickin said the next stage in Tasmania's response to H1N1 Influenza would be a vaccination program – the biggest ever managed in the state.

"The best way to prepare for a second wave is through vaccination and considerable work is being done in this sphere as we speak, with the first focus being broadly on at-risk people, and front-line health workers who care for them.

"A dedicated team has been established within the Department of Health and Human Services and has been working for some time on how such a roll-out would be coordinated.

"I can assure Tasmanians we won't be offering the vaccine unless we are sure it is safe and that it will work.

"Once again, I would urge Tasmanians to remain vigilant for signs of the flu and protect themselves, their families and others by following the simple rules;

- Wash your hands regularly
- Cover your cough
- Stand a distance away from others
- Stay at home if you are unwell and if you become severely ill or are in a vulnerable group and develop signs of the flu seek medical attention EARLY.

REBECCA WHITE SIGNS UP TO CWA AND LAUNCHES CAMPAIGN TO GET MORE YOUNG WOMEN INVOLVED

The Country Women's Association (Tasmanian branch) needs new members. The CWA supports the country community through thick and thin.

These remarkable women fund-raise to help farmers, community groups, and medical centres survive.

Without their support over the past three years many regional centres would have been much worse off during the drought.

I grew up on a farm and I know first-hand how tough it can be on the land and how important support is when life gets hard.

I am saddened to hear that every year the CWA loses 80 members with just 40 signing up to replace them.

This is why I have submitted my application to join the CWA.

I will also launch an online campaign using Facebook to motivate other young women in country Tasmania to join the CWA, and ask them to support the organisation that supports the country.

The CWA is as relevant to rural communities today as it was at its formation in 1936. It is up to all of us to ensure it can continue to do its vital work.



MEALS ON WHEELS ROSTER

Sept/Oct		St Marys	Fingal
Monday	28th	Ruth Aulich	Debra Speers (W)
Tuesday	29th	Pam Gillies	
Wednesday	30th	R & B McAllister	
Thursday (Oct)	1st	Yvonne Salter	
Friday	2nd	Dianne Foster	
MOW Contact		Phone Number	0488 384 344
Monday	5th	Drew Adam	Carole Woods
Tuesday	6th	Pam Gillies	
Wednesday	7th	Claire Bean	
Thursday	8th	Heather Griffiths	
Friday	9th	Wendy Aulich	

Church Services

Catholic Parish of St Marys

Sr. Lorraine Groves
Parish House. Ph: 6372 2252
Mob: 0409 172 741

1st Sunday: MASS

St Helens Vigil 6.00pm
Bicheno 9.00am
Swansea LWC 9.30am
Fingal 11.30am
Campbell Town 5.00pm

2nd Sunday: LITURGY

St Helens Vigil LWC 6.00pm
St Marys LWC 9.00am
Bicheno LWC 9.00am
Swansea LWC 9.30am
Fingal LWC 9.30am
Campbell Town LWC 5.00pm

3rd Sunday: MASS

St Helens Vigil 6.00pm
St Marys 9.00am
Swansea 11.30am
Campbell Town 5.00pm
Bicheno LWC 9.00am

4th Sunday LITURGY

St Helens Vigil LWC 6.00pm
St Marys LWC 9.00am
Bicheno LWC 9.00am
Swansea LWC 9.30am
Fingal LWC 9.30am
Campbell Town LWC 5.00pm

5th Week MASS

St Helens Vigil 6.00pm
Bicheno 9.00am
St Marys 11.00am
Swansea LWC 9.30am
Campbell Town 5.00pm

Anglican Parish of Northern Midlands

Avoca: 11am 2nd/4th Sundays
Fingal: 3 pm 1st/3rd Sundays
Mathinna: 3pm 2nd/ 4th Sundays
Ross: 11am 1st/3rd Sundays
Campbell Town: 9am every Sun.
(3rd Sunday - Family Service)

Anglican Parish of Break O'Day

Ph: 6376 1144

St Helens Every Sunday
8 am and 10.30 am
Kanga Sunday School
10.30 am - 12 noon
every Sunday for children 5/12 yrs
St Marys every Sunday 10 am
Pyengana: Kids Church,
2pm - 4th Sunday every month.

Salvation Army TUESDAY JAM

3-5pm every Tuesday.
excepting school holidays.
WOW "Women of Worth"
First Wednesday of month.
excepting school holidays.

SUNDAY JOY

7pm: each Sunday

LEGAL AID

3rd Wednesday each month
10.30am - 12.30pm.

Envoy Melanie Norton Ph: 63722099

Break O'Day Uniting Church

The Manse St Helens

Ph: 6376 2405

St Helens 9.00 am

Fingal 11.15 am

Seventh Day Adventist

Hodgeman Street Scamander

Sabbath School 10 am

Divine Service 11 am

On Air Now!

Vision FM 88.0 at
St. Marys, St Helens
and Fingal.

Robbo isn't alone at breakfast anymore.
Shelley has joined him and
they are calling the program
'The Journey'

100% positive music & talk all day long;
connecting faith to life.

National Vision Radio Network.
Phone 1800 007 770.
web www.vision.org.au

St Marys Online Access Centre Opening Hours:

Monday 10am - 3pm

Tuesday 10 am - 4pm

Wednesday 10am - 4 pm

Thursday 10 am - 3 pm

Friday 10 am - 3 pm

Saturday 11 am - 2 pm

Ph: 6372 2005

Classifieds in the Valley Voice are free of charge. If your articles are not sold after the first entry, we will repeat the ad in the next issue.

Please inform us if your items are sold.

Please note: Letters to be published in the Valley Voice must be signed. Please include your full name and contact details. Your name need not be published, but we must have a signature. Please keep letters to 300 words or less.

Articles and letters published in the Valley Voice are not necessarily the opinion of the staff and volunteers of this community paper. Ed.

Contacts for Valley Voice

PH: Judy: 6372 2155

email: judith.spilsbury@bigpond.com

Accounts: Mary: 6372 2328

Please leave written material at the
St Marys Pharmacy,
Main St, St Marys,
or post: C/- Post Office, St Marys Tas 7215

Advertising: 2008

Classifieds: 25 words or less: free

Community notices : free.

Small ads. Garage sales. Greetings.

Thanks etc. \$12.

¼ page \$20. ½ page \$30.

Full page \$50.

1 year posted subscription \$30.

Below are the Portraits by Ellis Johns and Zoe Greenfield that were sent to the Portrait Exhibition held on Wednesday 6th July at the Newstead College .

Zoe won the packers prize which was judged by the artists present at the exhibition. She received a voucher for artist supplies at Philcam in Launceston and Jodie Campbell asked to purchase her picture.



Portrait by Zoe Greenfield

Zoe with Jodie Campbell

Ellis with Jodie Campbell

Portrait by Ellis Johns



There was a young man and his name was Brody, he was his mother's pride
His father's eldest son, he stood just under 6ft high.

Brody loved his fishing and went just about every day but one afternoon Brody had an accident.

In '09, Brody and his mates went on a fishing trip and had an awful flip.

Brody and his mates were about 3 miles off shore,
They only had a 10ft dinghy and one oar!

A hole sprung up from the deck,
Andrew grabbed a bucket and started throwing water over the side.

Peter's face was in horror; Andrew started screaming "shark!"
We all looked at each other.

It was if the world stood still for a minute.

We saw the fin circling the dinghy.

Brody was shaking.

The wind started howling even louder,

The gusts were coming in at 90kmh.

The dinghy was like a sheet flapping in the wind.



Brody's mum had reported them missing,

Two days ago.

The local cops had been looking for them ever since they flipped.

A local fisherman said he had seen flares going off.

Just as the search team were about to go, a crew member screamed "Stop"

They found Brody alive.

Peter and Andrew were lost forever.

By Brody Gamble.

Some fine work. Brody re-shaped a story about himself into verse, taking particular note of line length to promote emphasis of meaning.

Mon	Tue	Wed	Thu	Fri
21 Sept ✦ BEGIN TERM 3	22 Sept	23 Sept	24 Sept	25 Sept ✦ Chess Tournament - SMDHS
28 Sept	29 Sept ✦ School Association Meeting 7pm Staff room	30 Sept ✦ Grade 8 Camp	1 Oct ✦ Grade 8 Camp ✦ School Newsletter	2 Oct ✦ Grade 8 Camp
5 Oct ✦ Rock Challenge	6 Oct	7 Oct ✦ St Marys Has Talent school hall ✦ ENE Meeting	8 Oct	9 Oct SCHOOL CLOSED L'TON SHOW DAY HOLIDAY

Rosny College Orientation



On July the 17th, Sally Johnson got out of bed at 5am!!

Why you ask?

She was heading to pick up four grade 10 students from the coast to take them to the Rosny College Orientation Day in Hobart.

Sophie Bourke, Kaitlyn Quinn, Rebecca Mitchell and Shannon Ross-kelly all piled into the car, one after the other and turned the heater on full blast as it was -5 degrees outside!

The CD pile was raided and the best of the Nineties was pulled out (much to Sally's dismay) and it was a non stop sing-a-long to the next McDonalds...!

After breakfast at Macca's they travelled the rest of the way to Hobart. Being St Marys, we had to make an entrance by being fifteen minutes late. The college students were not on campus so all of the high schools were thrown in together.

The students picked three subjects to study throughout the day.

It was a fantastic day. The students got to meet the teachers and other students from around the state.

Thanks Sally, for sacrificing your beauty sleep and giving us this educational, entertaining and very helpful opportunity.

Written by Shannon Rosskelly

Launceston College Orientation



On the 28th of July, 25 grade 10 students went to Launceston College for an orientation day organized by the college.

Each student got to pick 4 subjects that interested them. There was Life and Physical Science, Photography, Maths, English and many more.

The College had friendly students on site to help us around the stair filled buildings; at midday we all met in the Hall to collect information on future classes and got to talk to possible future teachers.

The cafeteria at the college was full of hot and cold food and drinks and it was great to hear the college band play while we ate. All round it was a great day and helped us with decisions and choices for next year.

ST MARYS DISTRICT HIGH SCHOOL
13 Gray Road, St Marys, TAS, 7215.
Phone: 6372 3900 Fax: 6372 2543
Email: st.marys.district.high@education.tas.gov.au



Tasmania
Explore the possibilities

ST MARYS COMMUNITY HEALTH CENTRE

DOCTORS ROSTER

23rd Sept - 27th Sept Dr G Trezise

28th Sept - 9th Oct Dr P Crawford

AFTER HOURS SERVICE CONTACT NUMBERS

PLEASE PHONE GP ASSIST ON 1300 780 011

AMBULANCE 1800 008 008 or

EMERGENCY 000

COMMUNITY HEALTH CENTRE 6372 2111

BEFORE PRESENTING AFTER HOURS.

St Marys Community Health Centre

GP Surgery Hours:

Monday—Friday 8:50am-12:30pm

12:30pm-1:30pm LUNCH

NO PATHOLOGY SERVICE 12:00-1:30PM

FLU LIKE SYMPTOMS

PLEASE PHONE 1800 358 362 BEFORE COMING TO THE MEDICAL CENTRE TO BE ADVISED ON THE APPROPRIATE ACTION

St Marys Community Kitchen Program

What is a Community Kitchen?

A community kitchen is a group of people who come together to socialise and cook delicious, affordable and nutritious meals which they share together. You do not need to have any experience as a trained kitchen facilitator will be there to help.

The program will be held on Thursday mornings, 10am to 1pm, beginning in late October. It will cost \$5 to join and \$2 per week. Transport will be available for those who require it.

If you would like to know more, we are holding a free lunch and information session on Thursday October 22nd at 12pm at the day centre at St Marys Community Health Centre. Bookings for this lunch are essential. Please call Sallie at the Community Centre on 63722111 or Michelle at the Healthy House on 63765242.

Tom Bain, Rae & Partners Lawyers

At the Community Health Centre Tuesday fortnights. For appointments please phone 6337 5555

ANGLICARE FINANCIAL COUNSELLING

Our service is FREE and confidential

Anglicare can provide counselling information, advocacy and support service to individuals and families experiencing financial difficulties. It is also involved in community education and development.

For appointments please phone Anglicare on:

FREECALL 1800 243 232

Appointments available every 4 weeks depending on demand
2nd Tuesday each month

AA CONFIDENTIAL SUPPORT SERVICE

Wednesday nights St Helens Anglican Church 8:00pm

Friday nights St Marys Anglican Church 8:00pm

For further details phone 6372 5026

WHAT'S ON AT THE CENTRE

23rd Sept	<u>Day Centre</u> — For details on the group please contact Ann Jetson on 6372 9512
23rd Sept	<u>Social Worker</u>
24th Sept	<u>Social Worker</u>
24th Sept	<u>MOW executive meeting</u> 10:30
25th Sept	<u>Social Worker</u>
25th Sept	<u>G.P. North</u> 9am—5pm <u>Diabetes</u> For appointments please see you GP for a referral. <u>Dietician</u> — Appointments by referral from your G.P <u>Exercise Physiologist</u> by referral from your G.P
29th Sept	<u>Child Health Session</u> with Sue Gofton. Every Tuesday by appointment. Please phone 0428 136 381
29th Sept	<u>Physio</u> —Peter Jenvey
29th Sept	<u>Healthy House</u> — Fiona Watts— 63765242
30th Sept	<u>Day Centre</u> — For details on the group please contact Ann Jetson on 6372 9512
30th Sept	<u>CRS</u> 10:30 AM
1st Oct	<u>Social Worker</u>
1st Oct	<u>Eyelines</u> Appointments made through provider
1st Oct	<u>Neet Certificate 3</u> Manual Handling training— 10:30 am
2nd Oct	<u>Social Worker</u>
5th Oct	<u>Relationships Australia</u> Lyn Marie phone 1300 364 277
5th Oct	<u>Auxillary Meeting</u> —1:30 pm
6th Oct	<u>Tom Bain— Rae & Partners Lawyers</u> . For appointment please phone 6337 5555. Available Tuesday fortnights at St Marys Community Health Centre
6th Oct	<u>Child Health Session</u> with Sue Gofton. Every Tuesday by appointment. Please phone 0428 136 381
6th Oct	<u>Physio</u> —Peter Jenvey
6th Oct	<u>Pregnancy Support Group</u> - 10:00 am
<p>Pregnant ? lets get together for a morning tea and informal chat about pregnancy stuff. 1st Tuesday of every month, 10 am for morning tea Contact Sallie 63729502 or 63722111 St Marys Hospital.</p>	

DAY CENTRE RAFFLE

- 1ST PRIZE- GIFT VOUCHER, BAY SURF ST HELENS WON BY MARK RENOLDS
- 2ND PRIZE- GIFT VOUCHER, HAPPY BELLY DELLY WON BY KEN
- 3RD PRIZE- GIFT VOUCHER, ST MARYS PHARMACY WON BY CASEY WHELDON
- 4TH PRIZE- FAMILY PIZZA, COACH HOUSE ST MARYS WON BY JUDY FIELDING
- 5TH PRIZE- BOTTLE OF WINE, ST MARYS HOTEL WON BY H LODGE
- 6TH PRIZE- BOX OF CHOCOLATES, ST MARYS IGA SUPERMARKET WON BY TASHARNA
- 7TH PRIZE- SOAP AND FUDGE, STRAWBERRY JELLY WON BY LEN MILES
- 8TH PRIZE- MENS HAIR CUT, DESIGNER STUDIO WON BY RACHEAL HARVEY
- 9TH PRIZE- MOVIE HIRE, ST MARYS NEWSAGENCY WON BY R MCGIVERON
- 10TH PRIZE- FUDGE, MOUNT ELEPHANT FUDGE WON BY E STEWART
- 11TH PRIZE- GIFT VOUCHER, PURPLE POSSUM WHOLEFOOD AND CAFÉ WON BY JAN MADDEN
- 12TH PRIZE- CUP AND SAUCER, SECOND HAND ROSE WON BY K SINGLINE
- 13TH PRIZE- BOTTLE OF PORT, IAN BRADBURY WON BY LYNNE

A SPECIAL THANK YOU FROM THE CLIENTS, STAFF
AND VOLUNTEERS OF DAY CENTRE TO ALL THE
BUSINESSES WHO KINDLY DONATED PRIZES FOR
THE RAFFLE; THIS WOULD NOT HAVE BEEN A
SUCCESS EXCEPT FOR THE GENEROSITY OF THESE
BUSINESSES.

SPECIAL THANK YOU TO THE ST MARYS LIONS
CLUB FOR THE GENEROUS DONATION OF A TV,
DVD PLAYER, BBQ AND THE ERECTION OF THE
ARIEL.

PROCEEDS FROM THE RAFFLE MONEY ENABLED
DAY CENTRE TO PURCHASE A CD PLAYER AND A
LOW LINE CABINET.

THANK YOU AGAIN FOR YOUR GENEROSITY.



Footy Colours Day

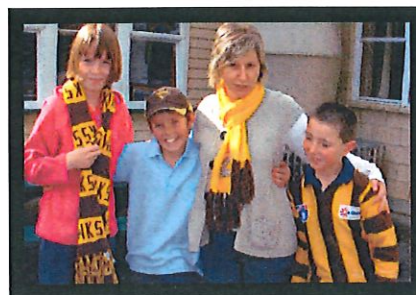
On Friday the 4th September 2009 Fingal Primary Students dressed in their favourite footy colours to raise money for Cancer. They raised \$68.10. What a great effort for our small school. You should be very proud of the money you raised.



Harvey Flynn, Nathan Applebee and Leo Davies.



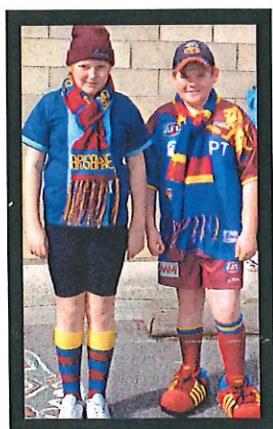
Joel Cox and Miss Smith.



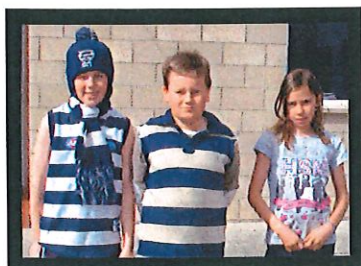
Chelsea Lohrey, Mark Death, Mrs Bennett and Kallam Brittain.



Zoe Simpson



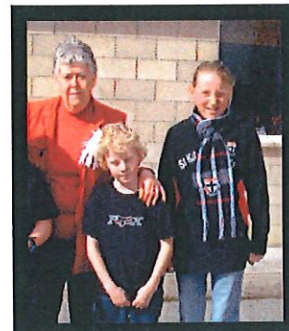
Breeana Francis and Alex Johns.



Bradley Mc Gill, Aaron Rush and Sharnee Casserly.



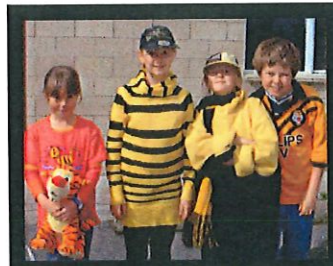
Chloe Harris, Jorgia Woods, Nakea Brown and Taylah Munro.



Mrs Rankin, Jayden Brown and Carley Baldwin.



Shyann Wheldon, Connah Tuck, Kurtis Tuck, Demi and Rebecca Brown.



Catherine Bean, Bridgette and Kimberly Burns and Ashley Gayford Thompson.

Calendar of Events - September/October

28th	29th Shan Williams Social Worker Visits	30th Flexible Programs	1st	2nd Principals Forum Launceston
5th	6th Liz Banks Visit	7th Flexible Programs	8th Launching into Learning 1.30-3.00p.m. Newsletter	9th Launceston Show Holiday

St Marys Sports Centre Inc. news Kackhander

First of all thanks to all who made the Club Championships a really well supported event. We actually had a maximum finish rate which is unheard of so great effort everyone. The scoring was pretty average mainly due to the excess rain playing havoc with the mowing etc but that's just how it is.

Congratulations to Kodie Donald (Club Champ) Barry Harrison (B Grade) and Don Targett (C grade) in winning their divisions. Congratulations to you all. A special mention to Diesel Coleman in also winning the C Grade Handicap title in his first year. Well done Diesel. Thanks also to the course crew who presented the course excellently especially given the recent weather.

Still to come we have the Grand Final Comp and Breakfast, so head along and enjoy a great morning. Please try to tell the club for catering purposes if you can. There are also numerous club events to play including the Spilsbury Trophy just to name one so keep a watch out for them.

Now to bowls, and first a big thanks to Mark and Roger for very kindly supporting the new bowls shirts purchase. This is much appreciated for the 2009/10 season. Thanks. It's also great to report that we have a couple of former players returning this year which is fabulous news.

Opening Day is quite soon and practice commences October 1st. There is a very important meeting about bowls structure this year that will need to be reported on in the next issue too. It's a busy time indeed.

The club is keen to see as many old and new members avail themselves of the club services. If you are new to the area or even if you're not but want to join, just give us a ring or call in. You will be made very welcome.

Anyway, until next time, good hitting and rolling.

Ministry for Education, Ireland Department for Learning Exam sheet for A-Levels Time allowed: 1 minute	
1. Continue this sequence in a logical way:	25 points
M T W T _ _ _ _ _	
2. Correct this formula with a single stroke:	25 points
5 + 5 + 5 = 550	
3. Please write anything here:	25 points
4. Draw a rectangle with 3 lines:	25 points
I will publish the answers in the next issue, but I will also admit to being stumped by two of them !	



38 Main Street St Marys
Phone/Fax 6372 2240 - Butcher Ph: 6372 2274
Mon - Fri 8am - 6pm
Sat 8am 12 noon

This week's specials.

From the butchery

Inghams free range breast fillets	\$14.99kg
IGA corned silverside	\$ 6.99kg
Turkey rump roast	\$ 7.99kg
Microwave chickens	\$ 5.99kg
Marinated chicken kebabs	\$ 1.15ea.

Instore specials

Lethborgs Cocktaill Savs/Savs/Frankfurts 400g	\$2.99ea.
Schweppes/Pepsi soft drink 1.25lt (excl Mim/Trad)	\$1.25
Kleenex cottonelle toilet tissue 6pk	\$3.99
Bundaberg white sugar 2kg	\$2.65
Cadbury drinking chocolate 225g	\$2.99

Get ready for footy finals

Lethborgs natural saveloys	\$7.99kg
Sargents traditional meat pies 4pk	\$6.35
Ingham Asteroids/Dip'ems 350g	\$4.99
Coca cola/Sprite/zero 2lt	\$2.59
Kleenex white facial tissues 130s	2 for \$3.

Next week's specials.

From the butchery

IGA thigh fillet	\$10.49kg
Oyster blade steak/blade roast	\$ 7.99kg
Pickled pork	\$ 10.99kg
Gerello roast	\$ 9.99kg
T-bone steak	\$14.99kg

Instore specials

Pea Beau fly spray 250g	\$2.99
Spree 2 x Ultra laundry powder 500g	\$1.99
Arnotts shapes biscuits 160-200g	\$1.99
Palmolive natural soap 4pk	\$2.49
Palmolive softwash pump 250ml	\$1.99

Frozen food panel

Ingham chicken Kiev 350g	\$7.99
Birds Eye fish fingers 250g	\$4.75
McCains Baby Beans/G. Beans 500g	\$2.89
Pacific West torpedo prawns 300g	\$6.99
Scotts frozen meat pies single 150g	.99c