

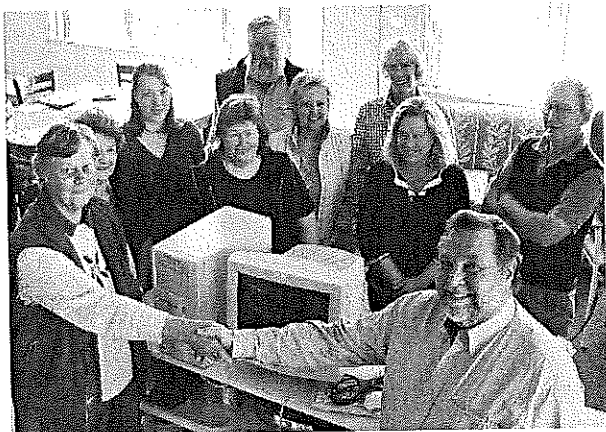
The Valley & East Coast Voice

Volume 39 No 13

Est. 1968

Thursday October 26, 2006

50 cents

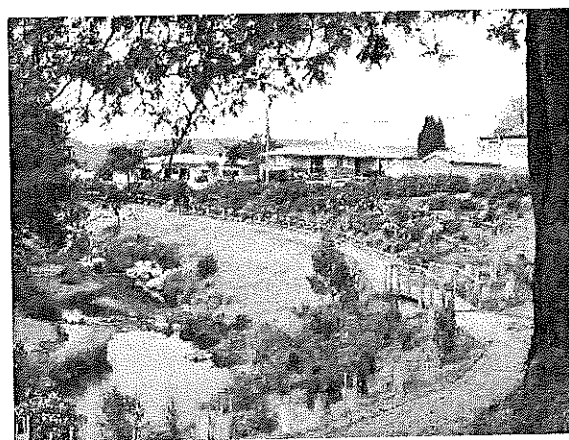


The St Marys Association for Community Development (SMACD) have kindly donated a new computer to the Tasmanian Lymphoedema Centre at the St Marys Community Health Centre. Pictured receiving the gift from SMACD Pres. are: l/r: Jan Sparkes, Ruth McGiveron, Esther Rubenach, Sue Christiansen, Matt Osbourne, Charlie Hersey, Cheryl Oates, Kate Williams, Jim Haas, Reon Johns.

Wombat Walk

The council workers are now finished at Wombat Walk and should be congratulated on a job well done. The new safety railing is finished and looking good, and the walkway is now open.

What a difference it makes, and it will be much safer to stroll along the path and take a look at all the good work the Wombat Walk Weeders have done. Well done folks!



Our trip to Sydney by Kim & Kelly

As some of you may know, we had a quick trip to Sydney a couple of weeks ago. We landed at Mascot at 6.30pm where the temperature that day was a mindblowing 30°! Definitely singlet and shorts weather.

Kim's friends put us up for the duration, and showed us the sights. A walk through Darling Harbour, lunch in Chinatown, a beautiful ferry ride at night across Sydney Harbour, and supper next to the Opera House, looking across to the Harbour Bridge. What a ball!!

The main reason for the visit was to attend the Gift and Homewares Trade Fair. It was like being a kid in a candy store. There were so many exhibitors with thousands of products to see and learn about. It was overwhelming at first, but we soon got into the swing of things, and before we knew it, we were wheeling and dealing like the pro's.

So. Good News! Main St Clothing and Ratha B'zar, will have some great new stuff coming over the next few weeks. Some of these will be excellent ideas for Christmas.

Kim is over the moon, finding some beautiful sleepwear. PJ's and nighties for the summer, 100% cotton in gorgeous prints, available in sizes 10 - 24.

Kelly's mission was to find blokey gift ideas, as well as homewares - including indoor cushion covers, wall hangings etc. plus b'zar odds and ends. Mission accomplished.

So come on and support local business, by coming in to have a look at the exciting things we have in store, **BEFORE** you travel far and wide for your gifts, clothing and Christmas needs.



Kim, from Main Street Clothing & Kelly from Ratha B'zar

Please note: Deadline for articles to be included in the next Valley Voice is: 5 pm Tuesday, November 7, 2006.

Community news

St Marys Hospital Auxiliary meets the first Monday of every month at 2pm at the **St Marys Community Health Centre**.

The Break O'Day Woodcraft Guild Inc. meets the last Saturday of the month at 4pm at the goods shed behind the St Marys Railway Station.

Grassy Bottom Regional Arts are holding General meetings on the first Tuesday of every month at the **e.ScApe Café** at 6.30pm. Come along to share your creative ideas and help Grassy Bottom maintain an artistic culture in our community.

The next meeting of **SMACD** will be held on October 27th, 2006 at the St Marys Online Access Centre at 5 pm.

THANK YOU

A very short note to say a very **BIG THANK YOU** to **SMACD** for their generous gift of a computer to the Tasmanian Lymphoedema Centre Inc last Monday, October 16.

Jan Sparks, TLC Inc. St Marys.

St Marys Online Access Centre

Opening Hours:

Monday	10am – 3pm
Tuesday	10 am – 4 pm
Wednesday	10 am – 4 pm
Thursday	10 am – 3 pm
Friday	10 am – 3 pm



Rainbow Retreat Wilderness Eco Cabins. Winner

of the Tourism Council of Tasmania's
"People's Choice Award"
for the June quarter 2006.

To celebrate this fantastic honour,
we are offering our special
Woodfired Pizza Deal.

The deal includes a delicious pizza,
a bottle of wine and chocolates on
arrival.

The special price of \$169.00 which
includes continental breakfast daily.

Come and stay at our award winning
Retreat and enjoy the ocean views and
the wildlife that roam freely on the
property.

For other fantastic accommodation
deals you are welcome to view our
website at

www.rainbowretreat.com.au

or visit our Retreat at
Lot 1, Gillies Rd, St Marys.

Your hosts, Peter & Ian
6372 2168 or 0417 017 105

TASMANIAN CRAFT FAIR DELORAINÉ 2006

SATURDAY,
4th NOVEMBER 2006

CALOWS COACHES
WILL BE TAKING A BUS
TO THE CRAFT FAIR THIS YEAR

DEPARTURE TIMES:-

2 CIRCASSION ST.,	
ST HELENS	7.45 am
PEDROS	
SCAMANDER	8.05 am
ST MARYS	
NEWSAGENCY	8.25 am

DEPART FOR HOME 4.30pm

RETURN FARES:-

ST HELENS	\$30.00
SCAMANDER	\$25.00
ST MARYS	\$20.00

NUMBERS LIMITED
SO BOOKINGS ARE ESSENTIAL
RING:

ST HELENS DEPOT
ON 63762161 OR
TRACEA ON 63725166

BOOK A STALL NOW! FOR THE MAYPOLE DAY MARKET.

Nov 4, 2006

Ph: Eo Greensticks on

0438 571 291

or Rachael on 6372 2255

ST MARYS COMMUNITY GARDEN
WORKING BEE: SATURDAY OCT. 28
10.30 AM – 12 PM
ALL WELCOME

Regular working bees will be held on
the last Saturday of each month
from now on.



Tanya: 6372 2187 W 6372 2534 H

"Christmas Songs for Children"

Christine White has put this CD together with
33 simple, catchy little songs with familiar

"little people" tunes. Song booklet included. \$14.00

The CD can be purchased at: St. Marys District High School,
St. Marys Post Office, Scamander Post Office,
St. Helens District High School,
Silver Rose (Beads) Forum Complex. St. Helens
or contact Christine on 63 725689

Christine's Nursery Rhyme CD

"Kookaburra Capers" is also available, \$14.00

<http://home.koee.com.au/christinewhite/xmas.htm>



REMEMBRANCE DAY AT CORNWALL

11th of the 11th at 11.00 am

An RSL service will be held to
remember all who served in our wars,
in conjunction with the planting of a

Lone Pine from Gallipoli,
followed by a cuppa and cake.

All Welcome.

Classifieds

FOR SALE

1990 Nissan Pulsar hatchback.
\$3000. Chris. Ph: 63725363

Philips CRT Computer monitor. 18 months old. Excellent condition. Instruction manual and installation disc included. Offers around \$150.
Ph: 6372 2214

One 10 yr old Angus X cow with 6 week old bull calf at foot. Offers.
Ph: 0419 003 103 or 0409 802 536

MUST SELL. 1 wooden rocking horse. \$25. 1 slide. \$10. ono. 1 baby born change table \$30. ono. 1 girls scooter. \$25. ono. 1 girls 20" push bike. \$30. ono. All in great condition. Great Christmas prezzies.
Ph: 6372 2164

Yamaha Electronic organ. 2 keyboards, pedals, rhythms, headphones. In woodgrain. Ex con. \$200. ono. Colliers encyclopedia, full set, 45 books. Ex order. \$50. ono. New alum white sliding window, still in plastic. W 810ml x H 1,200ml. 140ml reveal, with fly screen. Cost \$285. Sell \$200. Pet goats. Very quiet. \$50 each.
Ph: 6372 2357

For lease.

Large commercial shed. All amenities. 3 phase power. 156m² Great location. Price negotiable.
Ph: 6372 5228 or 0428 725 228

For hire

Music studio. Reasonable hourly rates. Experienced sound engineers.
Ph: Simon: 0405 320 977

Certified organic vegetables, direct from grower. Delivery or pickup in St Marys Ph: Jack 6372 2034

Kelvinator 360L upright freezer. As new condition. \$300. NEC 417L fridge/ freezer. 2 door (freezer on top) as new. \$800.

1 Mylock overlocker. 1 Husvarna overlocker. \$100 each. 1 Husvarna sewing machine. \$100. 2 single slat beds. \$20 each.
Ph: 6372 2155

Claw Foot Cast Iron Bath: Large rectangular bath (166 cm x 76 cm) in excellent condition. \$550.
Tel. 6225 4957 Mob: 0419 345 564

More for sale items

6 x 4 box trailer. Good order. 11 mths rego. \$500.
Ph: 6372 2191

Girls white brass beds x2. \$25 each.
Ph: 6372 2632 or 0408 931 044

Hardwood skirting boards. \$3.50 per metre. Ph: 0438 571 291

1990 Nissan Pulsar. 130,000 klms. Minor left hand front damage. \$350. ONO. Ph: 0400 171 681 or 0407 055 232

15KVA 3 phase generator-- Absolute Bargain- \$1000 ono light up a town- or a community event- Slimline Sunroof - \$50
Ph: 6372 5060

John Deere 2020, new ROPS, \$6,600. Ferguson scoop. \$110. Carryall. \$275. Ph: Hbt 6272 4278

Bronica ETRS camera, 220 film back, 50mm lens, 250mm lens, extension tube, tele-converter 2X, motor drive, speed grip, Polaroid back, filters, hard case. \$1600
Ph: 6372 5228 or 0405 320 977

Shearer available for small lots.
Ph: 6372 2762

Ramset gun & charger. \$500. ono.
Ph: 6372 2287

WANTED TO BUY

Slow Combustion Cooker in working condition, appearance no issue (wanted for external use). Contact Harry at the Post Office (6372 2124)

Laying Hens (2-5). Contact Em on 0407 048 881

Shop display cabinet, old style, glass front. To suit history room. Also sandstone blocks.
Ph: 6372 2222 or 0437 227 123

Hand crank ice cream maker.
Ph: 0438 571 291

Swing Set
In reasonable condition.
0400 512 845

Secondhand fencing wire.
Ph: 6372 2762.

FOR HIRE

MOBILE ESKY ON 6 X 4 TRAILER
IDEAL FOR CAMPING,
TRIPS AWAY, PARTIES (ETC)

FULLY LOCKABLE
\$30 PER DAY



Found 1 Pair of reading glasses, in the community bus. If they are yours, you can claim them from reception at the St Marys Community Health Centre.

Classifieds in the Valley Voice are free of charge. If your articles are not sold after the first entry, we will repeat the ad in the next issue. Please inform us if your items are sold.

Please note: Letters to be published in the Valley Voice must be signed. Your name need not be published, but we must have a signature. Articles and letters published in the Valley Voice are not necessarily the opinion of the staff and volunteers of this community paper. Ed.

Tim Morris MHA
Member for Lyons



CONTACT:

33 Burnett St, New Norfolk 7140

Phone: (03) 6261 8048

Fax: (03) 6261 8047

E-mail:

greens@parliament.tas.gov.au

www.tas.greens.org.au

Authorised by Tim Morris MHA,
Parliament House, Hobart 7000.

A LITTLE BIT OF HERITAGE: *by Jim Haas*

"Where have all the cows gone?"

During the latter half of 1969 dairy farmers in the St.Marys area, who supplied milk to the Gardiner's Creek Road cheese factory, lobbied for an increase of three cents a pound on the price of butter fat. If this price was not met by the St.Marys Dairy Co-Operative, many farmers threatened to sell their product to Northeast Dairy Co-Operative at Legerwood, who were offering 39 cents per pound for butter fat with a three to five cent bonus, which they believed, should lead to an average return of around 43 cents per pound.

A long debate followed with St.Marys Co-op, who claimed they were making little money as it was, and could in no way afford more than 40 cents per pound for butter fat.

This was answered by many farmers claiming the co-op had fallen behind the times and not kept up with modern techniques, which did not allow maximum returns from the butter fat.

But the co-op was not prepared to spend money on the factory, or pay more for the butter fat, and with a number of farmers deciding to sell their product to North East Co-Op; the St.Marys cheese factory closed its doors for good on the 7th December 1969.

Although many dairy farmers thought their move to North East Co-Op was going to give them a new life, it really was the beginning of the end for the dairy industry in St.Marys. Products like margarine continued to gain popularity, forcing dairy companies to cut their prices and this, of course, reflected back on the primary producer, making dairying less viable each year. One by one farmers in the area sold their dairy herds, with the larger land owners going into beef, sheep or crops whilst the smaller property owners had to move away from what had been their tradition for generations and seek employment in other fields, all of which was completely foreign to a seven day week bond with their cows and land.

By 1980 there was not enough dairy farmers left at St.Marys and the truck from Legerwood stopped coming, leaving only Percy and Kath Wright at "Daisy Dell", with their pasteurized cream market, the sole survivors of an industry that was, for many years, the life-blood of St.Marys.

But Percy and Kath were not getting any younger, and by the end of 1981 ill health forced them out of the industry as well bringing to an end a time that had, at its peak, seen some fifty dairy farms within ten kilometers of St.Marys. And with each one supporting a family, the spin off to the community was enormous.

The sad part was that St.Marys cheese was rated as some of the best in the country. Indeed, way back in the 1880s, after the German families who arrived in 1855 aboard the "America" and settled in the Break O'Day Plains and taught their dairying skills to the community, Robert Cadman of "Ascot Vale", who produced sixty ton of cheese per year from his tenant farm on part of "Londavra", won a number of coveted local prizes for his cheese as well as a medal in the 1884 Calcutta International Dairy Exhibition.

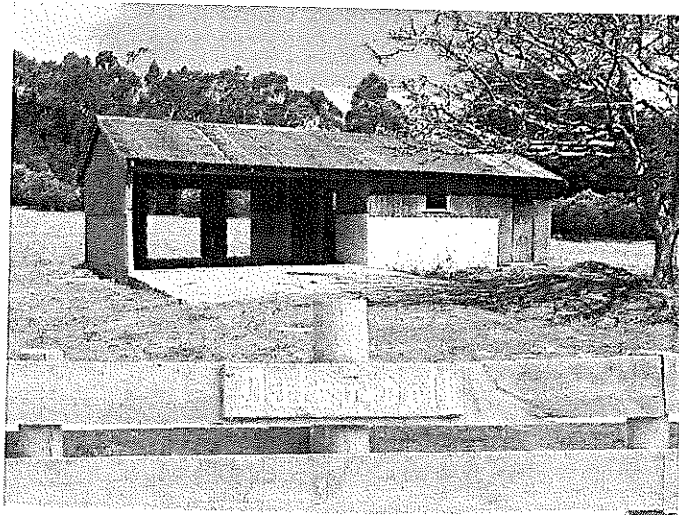
In 1894 the Tasmanian Dairy Company built a new "state of the art" creamery opposite the St.Marys railway station and by 1897, was making cheese that was sort after all around the country. But its life, too, was rather short lived and fell victim to a downturn in dairy products during World War One and closed in around 1920, leaving an empty building that was eventually burnt down, with only a slab of concrete remaining as a stark reminder of its existence.

Although a number of traditional farmers like George Oliver at "Balaclava" and James Wardlaw at "Glencoe" near Falmouth, continued to make cheese for the local market on their own farms, it was not until 1939 that Murdoch Brothers, who owned a butter factory in Hobart's Market Place, built the cheese factory in Gardiner's Creek Road, bringing the humble dairy cow back into popularity. But Murdoch's soon put the factory on the market, which led to a group of local farmers and businessmen forming St.Marys Dairy Co-Operative and purchasing the factory in 1948.

Herds from as small as two or three, to larger herds of a hundred or so, grazed the pastures of the Break O'Day Plains and the surrounding hills, as families big and small reaped the benefits of a stable local market to sell their produce and with this a close knit community of people, all of whom knew the toil of seven days a week from sunup to sundown, enhanced the spirit of our town. But they were a happy people and as contented as the cows that supplied their living, because the sharing of the workload bonded families together in a way that helped generate a love that lasted for ever.

Our dairy industry is long gone and, perhaps, will never return. Many of the farms are overgrown, or planted with trees. Dairies and homesteads are gone, or in a crumbling heap, sometimes there is only a pine or an oak tree to remind us of what used to be. But we must never forget the dairy industry and the significance its heritage is to St.Marys.

Wouldn't it be nice if, in the sesquicentennial year of our town, we could restore a dairy farm and once again taste the tang of local cheese, spread our morning toast with traditional home made butter, cover our 'Weetbix' or porridge with the thick crusty cream that forms on top of fresh heated milk, or just rock up to the farm with our billy for a pint or two of warm unprocessed milk straight from the cow.



The Say by Cagerattler

It's so easy for me to write these few lines this week, because I've been sort of involved with the topic. This topic of course is the plan to utilise the recreation ground more in the coming years.

The Advisory Group which has co-ordinated the final Master Plan to be submitted to our council deserves to be congratulated.

Our Chairperson and Council appointed Planner in particular, have especially worked hard on the document, but not far behind is the rest of the truly, genuinely committed bunch who have had major input into the final submission.

It is my policy not to mention names in this column as is the case here, but I can absolutely assure Valley Voice readers that if I did, the superlatives for our Chairperson, Planner and Advisory group members would not fit on this page.

Every single one of these people have had so far, and will continue to be heard, and all opinions have been considered. In addition to the Advisory Group our local District High School and Community Health Centre have also been keen contributors and potential joint partners. Then you add in some very qualified persons who have offered kind assistance to future redevelopment plans, and you can see why I'm so excited about the whole thing.

As you read this issue, a delegation from the Advisory Group will have presented our Mayor, with the final comprehensive document that has resulted from many, many weeks of input and research in our community.

I understand that, in turn, the Mayor will pass this on to our Council for perusal, and a period of public scrutiny will also be the case quite soon.

It is a marvellous read, and in my opinion an incredible opportunity for this region to again showcase itself, but most importantly, a chance to develop a public area precinct into a very useful community centre, as it should be.

Correctly managed, this town of ours can have a very affordable facility we can all be proud of.

I urge everyone of you to have a look at the development. You will be pleased I am sure.

What do you think?

C & D EXCAVATIONS



LOCAL OWNER - OPERATOR

OVER 20 YEARS EXPERIENCE

Ph : Dana or Craig 6372 2033 / 0439 722 032

If the earth doesn't move for you, let us help !

- ◆ 2 x 20 TONNE EXCAVATORS WITH TILT BUCKET & RIPPER, ROCK & LOG GRAB & QUICK HITCH
- ◆ D 65 KOMATSU DOZER, RIPPER & TILT BLADE
- ◆ 10 YARD TIPPER
- ◆ COMPACTION ROLLER
- ◆ 4 WHEEL DRIVE TRACTOR & SLASHER
- ◆ DAMS
- ◆ ROADING
- ◆ SLASHING
- ◆ FIRE BREAKS
- ◆ LAND CLEARING
- ◆ HOUSE SITES
- ◆ BRIDGE CONSTRUCTION
- ◆ ROAD GRAVELS AVAILABLE
- ◆ AND MUCH MORE

Public Notices/Classifieds

Old Photograph Search –

Do you have old photos, either inside or out, of the former St Marys RSLA and Community Institute /Salvation Army Building /or Farmers Meeting Hall ?

The building in question is now known as e.ScApe - Tasmanian Wilderness Café Gallery (across the road from the Post Office).

Of special interest are pictures of weddings / community gatherings /and events.

Please contact Rod on 6372 2444 or call into

e.ScApe

EAST COAST CONTRACTING Cherry Picker

Bucket able to reach up to 12m
Specialising in tree trimming
in and around power lines etc.



Paul Aulich 0419 382 287
Ricky Ward 0419 836 897

Police Report

Unfortunately, over the past fortnight there have been a couple of offences committed.

Between the 6th and 8th of October 2006, 3 windows on a house in Newman Street, St Marys were smashed, causing about \$200.00 damage. We are investigating this matter and would appreciate any assistance.

In the very early morning of the 17th of October 2006, a Toyota Hilux was completely destroyed by a deliberately lit fire at Razorback Road, Tower Hill. A 12 gauge shotgun cartridge was fired into the passenger side door as well. This is a very serious offence and again investigations are ongoing.

I have spoken to several locals regarding the wearing of seat belts. They must be worn when on a public street and if the vehicle is in motion, even if you are only travelling a short distance.

The road works on the Esk Highway seem to be coming along well, however until it is finished the temporary speed limits and traffic lights apply.

With the long weekend approaching, local police, as well as traffic, marine police and road safety task force will be out and about in force. So, while on the road, and water, expect to see their presence.

If you have any police related queries, please do not hesitate to call or visit the station. Any information regarding criminal behaviour can be given anonymously to **CRIMESTOPPERS** on 1800 005 555

For urgent and life threatening matters call "000" but for non urgent matters please call 131 444

Tony ROUGHAN
Sergeant

RATHAB'ZAR

40 Main Street St Marys Ph: 6372 2487

India has come to St Marys.

wall hangings, cushions, bed spreads, gift items.

Be the best dressed for the Melbourne Cup (and every day)

- *New dresses have arrived
- *Tops and skirts
- *Accessories too!

Too much new stock to list. Be daring – come have a look.

Be B'zar!

Fashion Parade raffle tickets still available from us, Main Street Clothing and The St Marys Hotel.

Great prizes.



IGA

Friendly Grocer

Barry Lyn Leanne

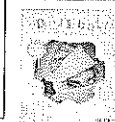
Welcome you to the "Top Shop"

Come and see us for
Great specials and friendly faces

Spend \$10.00 or more on groceries, and go in the draw for a \$25.00 grocery voucher, to be drawn on the first of each month.



**CHRISTMAS
TOYS & GIFTS
ARRIVING
DAILY.
CHECK THEM
OUT NOW.**



10% off frozen meat.

Meat packs available from \$25.
Hardware, gardening needs & paint.

EFTPOS

and phone recharge available.
FREE TOWN DELIVERY
Phone: 6372 2242

East Coast Phone & Communications

- * Telephone & Data cabling
- * Commander Systems
- * Sound System cabling
- * TV Antenna & Tuning
- * Digital Set Top Boxes, supplied & installed where reception available



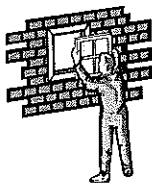
John Heron
30 years
experience
ACA Licence

PO Box 29,
St Marys 7215
Ph: 6372 2402
Mob: 0409 959 121

EAST COAST GLASS

Falmouth Ph: 6372 5361

- ☐ Glass repairs
- ☐ Shower screens
- ☐ Wardrobe doors
- ☐ Double glazing
- ☐ Aluminium windows
- ☐ Security doors



Locally owned and servicing
the East Coast

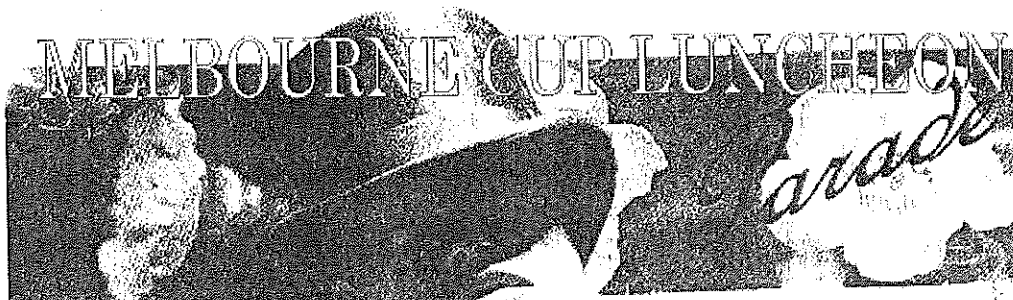
Call David and Anne Cannon
for prompt and reliable service.

CALTEX ST MARYS
MECHANICAL REPAIR & MAINTENANCE

ST MARYS
PH: 6372 2822

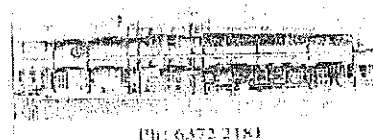
Fax: 6372 2822 Mob: 0419 503 109

MELBOURNE CUP LUNCHEON



Fashion at 3 COURSE LUNCHEON St Marys Hotel

- COMPLIMENTARY WINE ON ARRIVAL
- BOOKINGS ESSENTIAL
- PRIZES
- RAFFLE



PH: 6372 2181

FIRST PRIZE - Deluxe manicure or
pedicure - new outfit of your choice from

Ratha B'Zar or Main St Clothing, Jewellery from *Ratha B'Zar*, Haircut
from *BEACHCOMBERS HAIR and BEAUTY SALON*,
also Facial/make-up from Emma

SECOND PRIZE - \$25 gift voucher from Main St Clothing

THIRD PRIZE - Voucher from
Afternoon or morning tea for two.

eScApe
Illustration Workshop & Gallery

FOURTH PRIZE - shampoo and conditioner from Designer hair, St Marys.

FIFTH PRIZE - gift bag from GONE WITH THE WIND



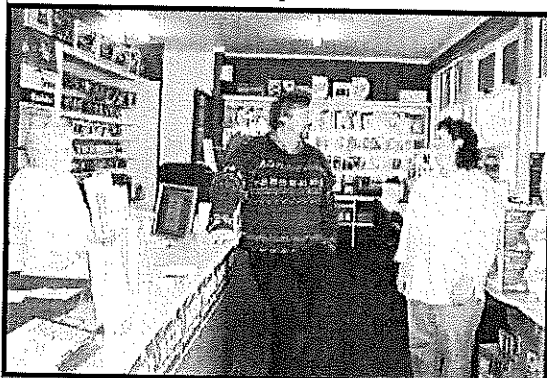
Back from *Ratha B'Zar*

SEE YOU THERE!

TUESDAY, NOVEMBER 7, 2006. 12 NOON



NORTH EAST COMPUTERS Pty Ltd
 Established 1995 ABN 44 074 123 425
3/34 Quail St Ph: 6376 2445
St Helens Fax: 6376 2447
 Email: sales@necomputers.com.au
 www.necomputers.com.au



Disaster Recovery & Service Contracts
-We make it work properly -
 Come and see our extensive range of
 computers, printers, scanners
 and office equipment.
 Get on the internet or buy a mobile phone.

Ph: Peter, Shan, Daryl: free quotes, friendly advice.
 Bus. Hrs:
Mon, Tue & Fri 9am to 5pm (2 Techs available)
Wed & Thurs 9am to 3pm Sat 9am to 12pm

EAST COAST SURVEYING
 Consulting surveyors and land planners.
 Mark Anderson 6376 1972

We can help you.

- ☐ Buying a property?
- ☐ Planning a development?
- ☐ Unsure of your property potential?
- ☐ In dispute with an adjoining owner?



Contacts for Valley Voice.

Fax: 6372 2172 PH: Judy: 6372 2155
 Email: j.spilsbury@tassie.net.au
 Accounts: Mary: 6372 2328

Please leave written material at the
 St Marys Health & Beauty Centre, Main St, St Marys,
 or post: C/- Post Office, St Marys Tas 7215

Advertising:

Classifieds: **25 words or less: free.**

Community notices : **free.**

Small ads. Garage sales Greetings, Thanks etc. \$8.

¼ page \$15. ½ page \$25. Full page \$40.

1 year posted subscription \$25.

KEVIN LOVE WELDING

Quail St. St Helens

Steel supplies

All types of fabrications



Ph: Dale 6376 2660 or Mob: 0400 801 980

Kevin 0419 559 651

TAIKO DRUMMING WORKSHOP

SUNDAY 29TH OCTOBER - FALMOUTH

10:30AM-1:30PM

cost: \$15 / \$105

call Lila for bookings on 63763021



e.ScApe
 Tasmanian Wilderness Cafe Gallery

now showing in the gallery:

Grassy Bottom Regional Arts

"MAYPOLE Art Prize"

Local works in various mediums with a visual reference to
 native Tasmanian flora, fauna, or landscape.

\$100. First Prize

\$50. Second Prize

\$20. Third Prize

To be judged by 'Peoples Choice' .

20 cents per vote at e.ScApe

Winners announced at

MAYPOLE Day Spring Festival

Saturday 4th November

on Faulkners Green St Marys.

in the fully licensed café:

great coffee!! milkshakes!! chai!! fresh juice!!
 all day breakfast!! homemade biscuits and slices!!

A selection of Tasmania's best beer and wine!!

Opening Hours:

9 – 3pm Sunday(& Public Holidays)

9 – 5pm Monday – Tuesday

9 – 8pm Wednesday – Saturday

21 Main St., St. Marys Tasmania 6372 2444



News from the Guides

What a year the St Marys Guides has had.

- *Thinking day – Campbelltown
- *Our own garden – plant, mulch, weed, etc.
- *ANZAC Day –make & lay a wreath
- *Rock & Roll night – making & serving drinks.
- *Gypsy dancing with Maggie.
- *Photography.
- *Scrapbooking with Eliza.
- *Quilting with Rita.
- *Disco Night Fever – Serving drinks etc.
- *Maypole – costumes with Eo.
- *Maypole – perform dance with Kelana Paru.
- *Participating in big Hobart Xmas Parade.
- *See 'Open Season' premier in Hobart.
- *Cooking – numerous times.
- *Craft – lots of gifts made.

As well as learning to just do their best and help others, **it's all about fun!**

So if you are interested in being part of it all for 2007, contact **Kelly: 0427 361 547**

The Tasmanian Lymphedema Centre Inc recently received a computer from St Marys Association for Community Development. (SMACD)

In a low key handover at the centre's monthly meeting the Presidents of both organisations agreed that the centre's administration will be made a little easier with this addition.

Both organisations work towards the betterment of the local community and rely on the support of a dedicated group of volunteers.

(See photo front page)

Letter to the Editor

Dear Sir,

I must compliment the newly formed Recreation Ground Committee and their efforts in rejuvenating the recreation complex in St.Marys. For far too long this facility, like many others in the area, has been sadly under-utilised, and if this continues, I have no doubt, many of these assets will be lost.

St.Marys and its surrounds has the potential to offer tourists and locals alike a diverse range of recreational activities from golf, bowls, cricket, football, tennis, soccer, horse events and many athletic activities, to bush walking and sight seeing, and we as a community must harness this, promote it, and ensure everything we have here is made the most of and nothing is lost.

Our recreation ground with its golf course, bowls green, race track, oval, show pavilion and potential camping ground is second to none, and with icons such as St. Patrick's Head, South Sister, Mt. Elephant, Mt. Nicholas Range with its coal mining heritage sites, Grey Mares tail and Break O'Day River all of which have accessible walking tracks with many leading to views that would stun any traveler, St. Marys should be promoted as the recreational centre of the East Coast.

The first step is for locals to get in the swing and join our clubs, play our sports, visit our icons and let the world know that what we have here is more interesting than smelling the salt air, or staring at the sea all day and getting sand between your toes.

What we have is unique, with relics that tell a million stories of more than 150 years of heritage. We have tall trees, manferns, ferneries, and wildflowers that fill the air with a fragrance as sweet and earthly as nature itself. We have rivers, creeks and mountains that offer a challenge all of their own, with rewards at the summit that will blow you away. Our surrounding bush provides a habitat for most varieties of wildlife, including some endangered species such as wedge-tailed eagles, grey goshawks, Tasmanian devils, spotted tailed quolls, wombats and blind velvet worms.

So come on people of the Break O' Day Plains, let's get off our butts and get active, so that the treasures we have in our recreation ground and natural environment can be utilised, promoted and saved for the pleasure of all.

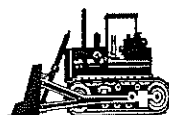
Jim Haas, Cornwall.

MILLERS SKID STEER EARTHMOVING

General Earth Works. George Miller 44 Elizabeth Street Mangana
FREE QUOTES - 6374 1024

- * DRIVESWAYS/ROAD PREPARATION (Graded & rubble supplied)
- * FINES SUPPLIED FOR ROADWAYS
- * LANDSCAPING STONES POSITIONED (Placement of Rocks)
- * ROTARY HOEING FOR HOUSEHOLD VEGETABLE GARDENS
- * TREE TRIMMING & GARDEN CLEAN UPS

- ◇ TRENCHES BACK FILLED
- ◇ RUBBISH REMOVAL
- ◇ SHED SITES CUT
- ◇ LANDSCAPING



DINGO MINI DIGGER!



PLUS

1.6 tonne excavator and tipper.

IDEAL FOR THESE JOBS!

Post holes- 200, 300, 450 mm

Levelling Trenching

Under house excavations

House and shed piers

Irrigation Water lines

Electrical and phone cables

Landscaping Footings

Tree planting

Clearing rubbish

Sewerage and drainage

Phone Chris

0417 344 209

or

A.H: 6372 2258

HARRIS FUNERALS

Lindsay & Diane

(D. Bailey & son) A.F.D.A

Ph/Fax: 6376 1153

Mob: 0418 133 420

Office & Residences:

114 Cecilia St

St Helens

Chapel:

46 Tully Street

St Helens



We are here
when you need us
to arrange

Burial or Cremation.

Pre-paid and pre-arranged
funeral plans are available.

The Falmouth Festival

The Friendly Festival on the Sunny East Coast
Showcasing Some of Aussies Best Talent

**THE RED EYES, Josh OWEN Band
Rob SAWYER, Tyson HODGES 3,
DAVE CALANDRA, THE EMBERS,
RAY Singline & the TRAWLDogs,
DIRTY HARRY & the ROCKETS,
PLUS MORE!!**

\$25 Tickets, \$50 Family

December 16th 2006

Falmouth Community Centre, Tasmania

Music from 12noon - 11pm

No BYO, No Glass. Kids Activities

Tickets available at: Red Hot CD's, Mojo Music,

Hobart Music Centre, eScApe cafe St Marys.

For info: www.myspace.com/falmouthfestival



White Sands Resort



Rae & Partners

Lawyers Barristers & Solicitors

93 York St Launceston

Ph: 6337 5555

Visiting :

St Marys Community
Health Centre

Alternate Tuesdays :

9 am - 10 am

Appmts: 6372 2172

DICK ADAMS MP

Federal Member for Lyons

Web Page. [Http://dickadams.id.au](http://dickadams.id.au)

Email: D.Adams.MP@aph.gov.au

PH. (03) 6398 1115

Fax. (03) 6398 1120

Local Call Cost 1300 132 689

Authorised by: P. Kearney

21 Killara Ave, Lanena



Advertisement

Wildlife of Tasmania Caring for Wildlife Caring for Orphaned Wildlife (Continued from last issue)

First 24 hours

This advice is to assist on those occasions where you are unable to obtain professional advice or help within 24 hours.

- Ensure both you and the animal are safe.
- Check that it is still breathing.
- Check for bleeding - any severe bleeding needs to be stopped by applying pressure to the wound.
- Treat for shock.
- Consult your vet as soon as possible.

Treatment for shock

Initially despite the trauma of injury or orphanage, there may be little evidence of shock. Symptoms often develop progressively. The most obvious symptoms of shock are that the animal is cold and has rapid pulse or breathing. A bird may have its feathers 'fluffed up' and a marsupial may be shivering.

Warmth

Provide warmth immediately. Use a hot water bottle, plastic drink container or heat pad. Incandescent light globes, preferably blue or green bulbs of 25-40 Watt, are ideal for birds. Do not use a fan heater.

Ideally the heat source should be outside the animal's housing and directed to only heat one end of the container. This allows the animal to move closer to or further from the heat. Use a thermometer near the animal to determine the temperature. Generally animals will pant when too hot or in birds, hold their wings away from their body. WARNING: if the heat source is inside the container it must be padded or shielded to avoid direct contact with the animal. Ensure any electrical connections or wiring cannot be chewed.

Warmth needed. These are to be used as a guide for shocked ani-

Adults & fledglings 27 C - featherless young 36 C

pets and household noises (ie a non-stressful environment).
3/4 of the cage to help keep the cage warm and provide

Do not offer fluids or solid foods to an animal until it is warm by placing a small, open dish of water near the heat source. It is best to seek expert advice before trying to feed an animal but small marsupials and birds will need fluid. Give Lectade (available from most vets) once its condition is stable. Follow the instructions on the packet. In emergencies you could offer boiled water with a pinch of salt and glucose. Only offer food appropriate for the animal.

This article will be continued in the next issue

Northeast Wildlife Carers

Northeast Wildlife Carers: are a local group of volunteer wildlife carers based in the Break O'Day municipality.

If anyone finds an animal or bird which is either injured or orphaned, please contact us on 0417 017 105 or 6372 2973 or take any injured animal directly to the local vet, who does not charge for this service if the animal has been taken for an examination first.

It is advisable to phone the vet first on 6376 1577 to seek the appropriate advice.

Any donations of old children's playpens, or old beanies, which are used as pouches, would be much appreciated.



If you are unable to take on or continue in the carer's role, please contact the Northeast Wildlife Carers. They have dedicated wildlife carers available to care for wildlife. Phone 0417 107 105 or 6372 2973
(Submitted by Peter Power)

We would like to acknowledge the Parks and Wildlife site:

<http://www.parks.tas.gov.au/wildlife/care/orphans.html>

.....which is also a great site in general for the public to understand about wildlife.





St. Marys Tasmania

Sesquicentennial Year 2007

Attention all Community Groups

As you are aware the town's sesquicentenary is nearly upon us.

St Marys Association for Community Development has planned a special event for our traditional St Patrick's Day festival.

It will be in the form of a "Back to St Marys Day" photo session to take place on the Saturday at the railway station and finish with an afternoon tea on the Sunday.

We are endeavoring to encourage all Community groups to participate in the Back to St Marys Day photo session and market by participating in fund raising stalls.

Grassy Bottoms Regional Arts will be operating the market and a \$25.00 donation will be expected per site payable to Grassy Bottoms Regional Arts.

Local community groups who book a site in the appropriate time will receive first preference and any remaining sites will be offered to private stall holders. Please confirm your interest by 30 December 2006, to enable us to plan the market site.

To book a stall please contact Reon on 03 63722094



As part of SMACD St Patrick's Day 2007 theme Back to St Mary's celebrations, we would like to honour all the residents of the

St Marys area who were born or have continuously lived in the area before 17 March 1947.

Those who qualify will receive a special certificate at the afternoon tea on 18 March 2007 at the St Marys Hall.

We are also searching for the oldest living resident in the St Marys area.

Please feel free to nominate anyone you consider fits the requirements or you can nominate yourself, and if you need more information contact Reon on 6372 2094.

Its easy, just fill in the form and leave it at the Caltex Garage.

As part of the upcoming Sesquicentenary celebrations we are looking for the oldest vehicle in St Marys and the oldest vehicle that is still registered. Please contact Ian Summers, Grant Faulkner, Bill Targett or Reon Johns.

OUT OF THE WOODWORK by Reon Johns

President 6372 2094

We have booked an appointment with the Council for our Certificate of Occupancy, and with a bit of luck a lease will be next.

I would like to thank Col McKenzie for all the work he has put in over the last few weeks. His expertise was invaluable and he was very generous with his time and tools.

As the Guild is helping out with Eo's bush furniture, the next meeting will be on Monday the 30th for this month only. Same time, but different. A week later.

Drew Adams very kindly donated three lengths of wooden water pipes and a few old wood working tools for our collection. Thanks Drew, the water pipes are a real treasure and we believe that they would be a 100 years old.

If you come across any old wood working tools that you don't want and would like them to be added to the Guild's collection please contact me and I will pick them up.

For all the people who have donated their old egg cartons, thank you, and we still need more. A big thanks to Ross and Tracey at the Coach house and Mark at the Value Plus for their support in this matter.

Don't forget, for this month only, Meeting Monday 30th. Same time.



Phone: 6372 2143

Open 7 days a week for your convenience
6am - 7pm Monday to Friday
7am - 6pm Saturday & Sunday

Redline
Depot

OUTDOORS

Aurora
PAYG



Assorted 2007 calendars: from \$6.95
Check out the window!

COKE: CANS 1.00 ea



TLC Inc.



Ladies and Gentlemen

This is an open invitation to join in the
fun & entertainment at our

MELBOURNE CUP LUNCHEON

Major Fundraiser for the
Tasmanian Lymphoedema Centre

Tuesday 7th November 2006
Doors open 12 noon for 1pm lunch

\$20 per person

at the St Marys Sports Centre

Complimentary drink on arrival

Sweeps & Draw of Major Raffle

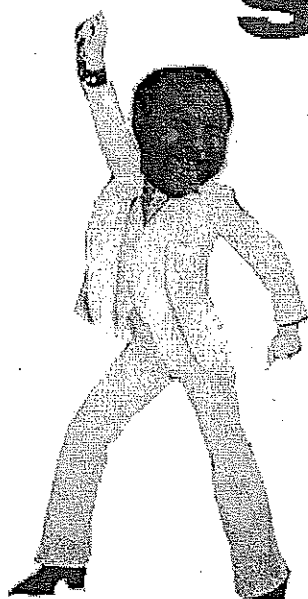
Prizes for: Lucky Door
Cup hat
Novelty hat
Cup Lady
Cup Gentleman



Book early for a group table.
Sports Centre will be open at Noon
Tickets can be bought from:
Ruth 6372 2231
Charlie 6372 2648
Audrey 6372 2337
Door sales on the day.

"Giveaways throughout afternoon"

Live Band



St. Marys Night Fever

**Music
from the
70's & 80's**

Venue : St. Marys Town Hall

Date : 28th October 06

Time : 7pm

Bring a plate

Ticket Price

Adults - \$6

Children - \$3

Family up to 4 - \$12

- **Licenced Bar**
- **Milkshakes & Spiders etc.
provided by the Girl Guides**
- **Proceeds to support
Sesquicentenary Celebrations**

**More Information
Phone Reon 63722094**





What's On In St Marys

If you would like your event included in this page, Reon can be contacted on 6372 2094

<i>What</i>	<i>Date</i>	<i>Time/s</i>	<i>Where</i>	<i>Who</i>
<i>St Marys Night Fever</i>	<i>Saturday 28/10/06</i>	<i>7pm</i>	<i>St Marys Town Hall</i>	<i>SMACD</i>
<i>THE MELBOURNE CUP LUNCHEON "The EVENT of the year!!!"</i>	<i>Tuesday 7/11/06</i>	<i>11am – 5pm</i>	<i>St Marys Sports Centre</i>	<i>Tasmanian Lympho- edema Committee</i>
<i>Melbourne Cup Fashion Parade Lunch</i>	<i>Tuesday 7/11/06</i>	<i>tba</i>	<i>St Marys Hotel</i>	<i>Ratha B'zar & Main St Clothing</i>
<i>Makers & Growers Market</i>	<i>Saturday 4/11/06</i>	<i>9am – noon</i>	<i>St Marys Town Hall</i>	<i>Grassy Bottom Regional Arts</i>
<i>Maypole Festival</i>	<i>Saturday 4/11/06</i>	<i>10am – onwards</i>	<i>Faulkner's Green</i>	<i>Grassy Bottom Regional Arts</i>
<i>Makers & Growers Market</i>	<i>Saturday 2/12/06</i>	<i>9am – noon</i>	<i>St Marys Town Hall</i>	<i>Grassy Bottom Regional Arts</i>
<i>Christmas Carols</i>	<i>Sunday 17/12/06</i>	<i>(evening)</i>	<i>St Marys Town Hall</i>	<i>St Marys Community</i>
<i>Lions Christmas Parade</i>	<i>Sunday 24/12/06</i>	<i>Tba</i>	<i>Main St St Marys</i>	<i>St Marys Lions Club</i>
<i>St Marys 'Sesquicentenary' Pacing Cup</i>	<i>1/1/07</i>	<i>(afternoon)</i>	<i>St Marys Racecourse</i>	<i>St Marys Pacing Club</i>

NEWS FROM JAM !! (Jesus And Me)



During the last school holidays, 12 people from JAM travelled to Port Sorell for a children's ministry camp. The theme of the camp was the recent movie "The Lion, the Witch and the Wardrobe" which was based on the C.S.Lewis novel of the same name.....so the camp was called "Camp Narnia"! For 3 days and nights, children from the north of the state enjoyed a wonderful combination of craft, games, stories, food (including a banquet night!) a coronation ceremony, a visit to the beach and much more.

Our next big event is coming up in 10 days time!

Last year, JAM went on its first major excursion, to see Colin Buchanan in concert. We have been singing Colin's songs for 5 years at JAM, and he is tremendous fun in his live concerts. So we are really looking forward to boarding the bus once again, for another fun day at the Door of Hope in Launceston.

We may have some spare seats on our bus, so if anyone is interested in joining us for our big day, then please contact Melanie Norton on 63722099 or 0409-838816.

We guarantee you a great time!



Colin Buchanan

Live in Concert 2006!

**Please phone Koorong for ticket sales.
Tickets \$8 per person aged 2 or older.**

HOBART: Friday 3rd of November 4.30pm.
Citygate Convention Centre,
400 Cambridge Road, Mornington Tas.
Ticket Sales (03) 6234 0577

LAUNCESTON: Saturday 4th of November 10.00am.
Door of Hope Church,
Corner Glen Dhu Street and Heather Street,
South Launceston Tas.
Ticket Sales (03) 6331 6759

MEALS ON WHEELS ROSTER

Nov	St Marys	Fingal
Mon (Oct) 30th	Annette Davey	Shirley Parker
Tues (Oct) 31st	Pam Lynch	Tom Brady
Wed 1st	Pam Gillies	Susan Woods
Thurs 2nd	Gail Gamble	Lynda Bean
Fri 3rd	Hannah Rubenach	Shirleen Woods
Mon 6th	Audrey Wright	Carole Woods
Tues 7th	Dawn Lodge	Debbie Speers (N)
Wed 8th	B & B McAlister	Barb Saunders
Thurs 9th	Kaye Nailer	Prev Mills
Fri 10th	G & M Derbyshire	Robyn Miller

Church Services

Catholic Parish of St Marys

Sr. Helen Hickey,

Parish House. Ph: 6372 2252
Mob: 0427 055 963

1st Week: MASS

St Helens Vigil 6.00pm
Bicheno 9.00am
Fingal 11.30am
Campbell Town 5.00pm

2nd Week LITURGY

St Helens Vigil 6.00pm
St Marys 9.00am
Bicheno 9.00am
Fingal 9.30am

3rd Week: MASS

St Helens Vigil 6.00pm
St Marys 9.00am
Swansea 11.30am
Campbell Town 5.00pm
Bicheno LITURGY 9.00am

4th Week: LITURGY

St Helens Vigil 6.00pm
St Marys 9.00am
Bicheno 9.00am
Fingal 9.30am

5th Week: MASS

St Helens Vigil 6.00pm
Bicheno 9.00am
St Marys 11.00am
Ross 5.00pm

Anglican Parish of the Northern Midlands

Services each Sunday

Avoca 8 am
Fingal 10 am
Mathinna 2nd & 4th
Sunday monthly at 11.30am

Daily Office Reading

Avoca Tuesdays 10 am
Fingal Tuesdays 12 noon
Ross Wednesdays 10 am

Anglican Parish - St Helens

Ph: 6376 1144

St Helens Every Sunday
8 am and 10.30 am

Kanga Sunday School

10.30 am - 12 noon every
Sunday for children 5 - 12
yrs

St Marys 10 am

(No service 5th Sunday)

Pyengana 7.30 pm

5th Sunday months only

Break O'Day Uniting Church

The Manse St Helens
Ph: 6376 2405

St Helens 9.00 am
Fingal 11.15 am

Seventh Day Adventist

Hodgeman Street Scamander
Sabbath School 10 am

Ransley's Appliance Service

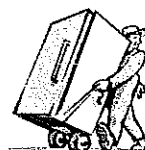
P O BOX 136

SCAMANDER TAS 7215

- WASHING MACHINE NOISY?
- REFRIGERATOR RUNS TOO LONG?
- CLOTHES DRYER BLOWS COLD AIR?

THEN YOU NEED
THE SERVICES
OF OUR TECHNICIANS

RING US ON:
SCAMANDER 6372 5307
MOBILE: 0428 761 811



Peter Dane Gardening

St Marys

Qualified Horticulturist

Over 25 years experience in all aspects
of garden maintenance, restoration
and organic vegetable growing,
specialising in pruning.

Get your garden
into shape for spring.

Call 6372 2686

or 0408 208 658

K. & A. FLETCHER

PLUMBING/ GASFITTING SERVICE

FOR ALL YOUR GENERAL PLUMBING NEEDS.

INCLUDING:

- * HOT WATER UNIT RENEWALS
- * STORMWATER & SEWER DRAINAGE
- * HOT & COLD WATER INSTALLATIONS
- * ROOFING & GUTTERING
- * L.P.G. & NATURAL GAS INSTALLATIONS

FOR FURTHER ENQUIRIES RING KEN ON

6374 2141 OR 0429 142 887



LIST OF COUNCIL COMMITTEES

The following Councillors were elected at the October Council meeting
by the full Council. The motion was carried 7/2 .
(Mayor ex-officio)



INTERNAL REPRESENTATIONS	REPRESENTATIVES	EXTERNAL REPRESENTATIONS	REPRESENTATIVE
FINANCE COMMITTEE	All Councillors	NRM NORTH	Clr Harper Clr Clement
PLANNING COMMITTEE	All Councillors	GEORGES RIVER MANAGEMENT AUTHORITY	Clr Harper Clr Clement
HERITAGE COMMITTEE	All Councillors	BODHRA	Clr Clement
WORKS COMMITTEE To include: Cemeteries Parks Reserves and Verges	Clr McGiveron Clr Lefevre Clr Cato Clr Holder	ST HELENS HISTORY & VISITOR INFORMATION CENTRE SPECIAL COMMITTEE Board Member	Clr Cato
AERODROME MANAGEMENT COMMITTEE To be sub-committee of Works Committee		BREAK O'DAY BUSINESS ENTERPRISE BOARD	Clr Legge Clr McGiveron
COMMUNITY COMMITTEE	Clr Osborne Clr McGiveron Mayor Legge	GEORGES BAY BAR WAY COMMITTEE	Clr McGiveron Clr Lefevre Clr Warren
SPORT AND RECREATION COMMITTEE	Clr Osborne Clr Harper Clr Holder	ST HELENS AND DISTRICTS CHAMBER OF COMMERCE	Mayor R Legge Clr McGiveron Clr Osborne
BREAK O'DAY COUNCIL CONSULTATIVE COMMITTEE	J McGiveron	NORTHERN TASMANIA DEVELOPMENT (Including "Trail of the Tin Dragon")	Mayor R Legge (Proxy Clr M Osborne)
NRM SPECIAL COMMITTEE OF COUNCIL	Clr Harper Clr Clement		

Story Street Studio's will be holding a meeting to incorporate, on the 16th of November, 2006 at 7.30 pm at 2 Story Street, St Marys.

This will be a 'not-for-profit' incorporated association, with the aim of establishing the Artspace and Youth Annexe at 2 Story Street.

Everyone who would like to attend is invited to come along. You can view the story Street Studio website, 'The Artists of NE Tasmania' at: www.storystreet.com.au

It is still under construction, and new members are welcome. For information please ring Eo Greensticks on: 0438 571 291.

BICHENO HAIR SALON

Opening - 7th November

Hours: 9.00 am - 4 pm

Monday, Tuesday, Thursday, Friday.

Phone Janelle on 6375 1537

Located at: 69 Burgess Street
(behind Roberts Real Estate/Information Centre)

COLOUR & CUTTING SPECIALIST COMING TO BICHENO!

Janelle is a fully qualified hairdresser with 17 years experience in all facets of hairdressing. She is a trained Hair Colour Technician/Consultant and has worked in various salons in Tasmania and Queensland.

Phone Janelle to arrange an appointment to have your hair styled, coloured, permed or shampoo set.

NE HIGHLANDS TRAIL ALREADY ROARING SUCCESS

Govt Must Protect Mt Victoria Reserve

The Tasmanian Greens last week called on the Minister for Tourism, Ms Paula Wriedt to ensure that the North East Highlands Trail, which incorporates the Blue Tier and Mt Victoria, is given all the State Government support necessary to become an authorised 7-day trail on a par with the Overland Track and the newly proposed 3 Cape Track on the Tasman Peninsula, and guarantee complete protection for this already recognised iconic trail.



Greens Member for Lyons, Tim Morris MHA, said hundreds of people have already walked and ridden sections of the North East Highlands Trail, with numerous people having completed the entire seven days of this multipurpose trail, located between Mt Victoria and the old Weir above Halls Falls, near Pyengana, and that the Government needs to recognise the outstanding tourism values of the area and ensure that no new roads are allowed to be constructed within the Mt Victoria Reserve, which would compromise the Trail.

"The State Government has been arguing that it would be too expensive to develop the North East Highlands Trail, but this is obviously a complete red herring, as people are already walking on the trail, which highlights the beauty and diversity of northeast Tasmania."

"The North East Highlands Trail is a truly unique tourism opportunity for Tasmanian, catering for all groups of people with its fabulous 7-days experience, which can also be broken down in what ever unique section that takes people's fancy."

"This special trail caters for walkers, bike riders, potentially horse riders, and in sections it is possible to provide logistic support by road – making it easier for people using the trail, as has now become popular in Europe."

"The Minister for Tourism, Ms Wriedt, must use her influence in the Cabinet to lobby for protection of the Mt Victoria Reserve from inappropriate forestry roading and once and for all publicly announce the complete safeguarding of the entire trail from Mt Victoria to Halls Falls."

"It is positive that the State Government is finally starting to promote other trails around Tasmanian than the Overland Track, with the recent announcement investigation of the 3 Cape Track on the Tasman Peninsula, but here in the north east of the state there is another tourism opportunity that they have been completely ignoring which could become just as famous as these other tracks if the Government would get behind it."

"The Minister for Tourism needs to ensure protection of approximately 3,500 hectares of State Forest in the Bass Forests to form a continuous tract of land through the northeast - from Mount Victoria to the Blue Tier - linking the existing Mt. Victoria, Frome and Blue Tier Reserves; to the east this area covers the entire catchment and headwaters of the George River, to the west it would protect a large percentage of the Ringarooma River catchment."

"I don't understand why the State Government is not jumping for joy at the opportunity to promote the North East Highlands Trail, which many people have already embraced, and would cost them minimally, and I call on Ms Wriedt to come onboard and ensure the government's immediate support," Mr Morris said.

Motion tabled by Tim Morris MHA

That this House calls on the Minister for Tourism to:

Provide all possible state government support for the North East Highlands Trail concept, which incorporates the Blue Tier and Mt Victoria; and

2. Ensure that no new roads are allowed to be constructed within the Mt Victoria Reserve – in recognition of its outstanding tourism values and stunning features.

Scamander Beach Surf Shop

6 Lagoon Esplanade
Scamander

Ph: 6372 5529

Scamandersurf.com

Bathers Wetsuits
Clothing Footwear
Bodyboards
Watches Jewellery DVD's

Surfboards:

Milch McTavish
Surftech G Boards Bic



Bay Surf Shop

2 Pendrigh Place
St Helens

Ph: 6376 1755

Grassy Bottom Regional Arts presents

the Arts Festival in a Teacup
MAYPOLE
ART PRIZE

To be judged by 'the people's choice'

View and Vote!

at the Escape Café Gallery
main street, Street, Marys

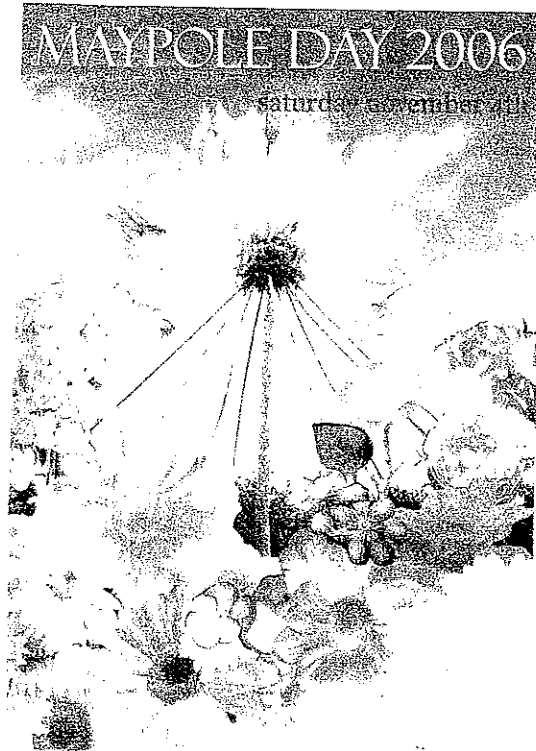
From Oct 25th until Nov. 4, 2006

Voting closes 12 noon, Nov. 4, 2006

Winners to be announced at the Maypole Day
On Faulkner's Green, St. Marys
after the Maypole Dance, 4:30 approx.

come along and have a look
cast your vote
in this exhibition of local artwork!
20 cents a vote

**Grassy Bottom Regional Arts presents
The Arts Festival in a Teacup workshop series**



Kids Workshops

Friday November 3

on Faulkner's Green

St. Marys

10 til 3

Choc. Ripple cake making,

Clay Sculpture & Felting

Cost: \$3 per workshop or

\$5 for the day

for info phone Eo on 0438 571 291

Sunday November 5

Pancake Breakfast on the Green at 9:00

followed by

Cornwall Heritage Walk

2 hr return easy walk, with Jim Haas at 11:00
bring a packed lunch, the kids and the dog!

or

Garden and Gallery Tour

on the Community Bus at 11:00
(maps available for Self-drive tour)

Gold Coin Donation

for more information
please ring Ed Greenslicks on 0438 571 291

Grassy Bottom Regional Arts presents:

a celebration of spring!

MAYPOLE DAY 2006



Sat. Nov. 4

on Faulkner's Green, St. Marys
Spring Markets from 9 am
Entertainment, food and activities
From 12 noon until 6pm

Before Day

Sat. Nov. 4, '06

A celebration of Spring!

Spring Market

9 til 2

12 til 6:00

Entertainment
and activities

10:00 Guided Bushwalk with Todd Dudley

2:00 Puppet Parade

3:00 Judging Cake Bake and
Flower Arrangement Comps

4:00 Maypole Dance

4:30

Crowning of
Maypole King and Queen
Announcing of MAYPOLE Prize winner

Kids tent

Face painting

Baby animals

Woodturning demo

Micro Cinema

Tarot reading

Picnic lunch

Afternoon tea

Music

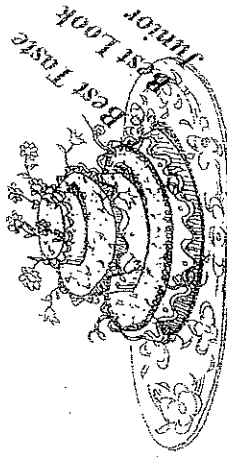
Storytelling

Dancers

Raffle Draw

Screening of the Micro Cinema and Music session

At Escape Café at 8:00



CAKE BAKE

Cake Bake

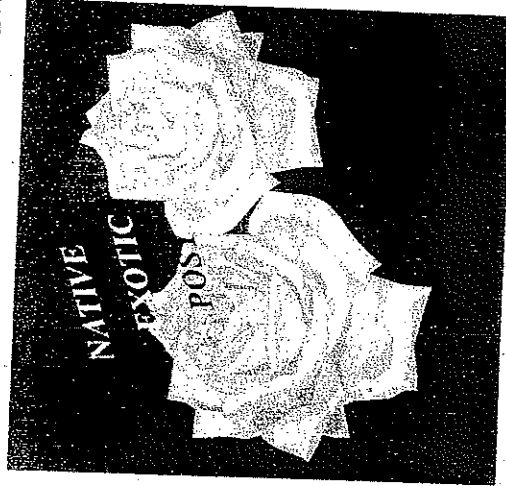
COMPETITION!

ENTRY FORMS

NAME
ADDRESS
PHONE

FLOWER ARRANGEMENT

NAME
ADDRESS
PHONE



Market Stalls Available Ring Eo
Green sticks on 043857291

*"Fingal Train Station
Restoration, Celebration!"*

When: 9am-4pm

Where: : In The Grounds of the

"FAMILY BASED CARE" Center FINGAL

CAR BOOT MARKET DAY

Monday 6th November

**Raffle, Tarot-Card Reading, Lucky Dip,
Sausage Sizzle, "Brick-a-Brac" & more....**

**Brought to you by
"The Break-o-Day Community Enterprise
Co-Operative Society Ltd."**

To Book A Site, Call Heather Shilling Ph. 6374 2129



get walking
tasmania
8 - 14 Nov. '06

Walks on the Blue Tier

SATURDAY 11TH NOVEMBER 2006
MEET AT POIMENA ON THE BLUE TIER
AT 10.30am FOR MORNING TEA
OBSERVE 1 MINUTES SILENCE AT 11AM
DEPARTING ON A SELECTION OF WALKS AT 11.10am
FREE BARBEQUE LUNCH AT 1.00PM

People of all ages and physical ability are invited to join us to
celebrate Get Walking Week on the Blue Tier.

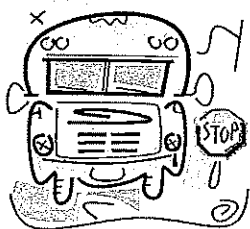
Three walks of varying grades to choose from:

Goblin Forest Walk - 20 minutes suitable for prams and wheelchairs.

Mt. Poimena 1.5 hours easy walk through beautiful waratahs, with magnificent views.

Mt. Michael 2 hours medium grade walk through beautiful Myrtle Forest ending at Sun Creek.

FOR MORE INFORMATION PHONE
THE HEALTHY COMMUNITY PROJECT ON 63765242



TRANSPORT will be provided free of charge from Fingal through
St. Helens & Weldborough through Pyengana if enough interest

REGISTRATION IS ESSENTIAL

Transport will not be arranged unless registrations
are received on 63765242 by Friday 27th October



WANT TO KNOW HOW TO GET THERE?
MAPS CAN BE PROVIDED PHONE US ON 63765242
OR CALL INTO THE HEALTHY COMMUNITY PROJECT
AT 5 PORTLAND COURT, ST. HELENS
EMAIL: fiona.watts@healthyhouse.org.au



Transnational
Health and
Ageing

ST MARYS COMMUNITY HEALTH CENTRE

FIRST MEETING
CANCER:
CRITICAL ILLNESS SUFFERERS
& CARERS SUPPORT GROUP

When: November 10th at 2:00pm

Where: Meeting room at the
St Marys Fire Station
(Located at the recreation
grounds Harefield Road)

Who: Members of the public who are coping
with illness themselves or their families.

Please come and let us know what you
want, very informal but your input is vital.

Have a cuppa amongst friends....

For more information contact
Noelene on 6372 2884

PALLIATIVE CARE VOLUNTEERS REQUIRED

Our Vision

'To Enhance quality of life by ensuring that every person affected by a life limiting illness has knowledge, capacity and right to access quality palliative care appropriate to their needs.

We are currently seeking committed people in the Break O'Day and North East Region. A comprehensive induction program is offered with ongoing support and education. Men are particularly encouraged to apply to assist with a range of support activities.

Please contact Leanne Preston on 6336 5544
for further details.

After a visit to beach, it is hard to believe we
live in a material age.— P.K. SHAW

When things are steep, remember to stay
level-headed. HORACE

The St Marys Community Health Centre is having a



COMMUNITY INFORMATION SESSION



In the Day Centre Room.

WHEN: 26th October 2006 (10am-3pm) Lunch Provided

WHAT: A day to have your questions answered, at no cost.

EVERYONE WELCOME....

PROGRAM

10am	Coffee & welcome
10:30am	Advocacy Tasmania
11:00am	Public Trustees- 'Wills' written on the day
12:00 noon	Lunch
1:00pm	Healthy Community House, St Helens
1:45pm	Mental Health
2:15pm	Discussion on; 'What do you want us to provide for future sessions?'
2:45pm	Close

For further details please phone Helen Jennings on 6372 2111

Information of this page was supplied by:

St Marys Community Health Centre, Gardiners Creek, Road, St Marys, TASMANIA. 7215

ST MARYS COMMUNITY HEALTH CENTRE

PLEASE BE PATIENT

Current demand on our doctor is at an all time high. Please be aware that **waiting periods do apply**. **Phoning in advance may save you a wait. Please be patient**, we are doing our very best and your cooperation is appreciated. Everyone's health is important to us. — Manager CHC

DOCTORS ROSTER

23-27 Oct Dr Loeffler & Dr Reeckman
30 Oct-3rd Nov Dr Loeffler and Dr Richard Weate
6-9 Nov Dr Reeckman
6&7th Nov Dr Loeffler
10th Nov NO DOCTORS SURGERY

**DR LOEFFLER WILL BE UNAVAILABLE FROM
8-16 NOVEMBER 2006**

PLEASE PHONE THE COMMUNITY HEALTH CENTRE ON
6372 2111 FOR APPOINTMENTS OR **BEFORE
PRESENTING AFTER HOURS.**

**CURRENT WAITING PERIOD IS APPROX 3
WEEKS FOR DOCTORS APPOINTMENTS.**

- At the time of print, subject to change depending on demand.

SCRIPTS AND DOCTORS APPOINTMENTS

PLEASE ENSURE DOCTORS APPOINTMENTS
ARE BOOKED **PRIOR** TO YOUR MEDICATION/S
RUNNING OUT OR **IN ADVANCE** IF YOU ARE
ATTENDING THIS PRACTISE REGULARLY. **SCRIPTS
WILL NOT** BE TAKEN OVER THE PHONE.

St Marys Community Health Centre

GP Surgery Hours:

8:50am-12:30pm

12:30pm-1:30pm LUNCH

(Please do not phone during lunchtime
as appointments can not be taken)

1:30pm-5:00pm

PLEASE PHONE GP ASSIST ON 1300 780 011
FOR AFTER HOURS SERVICE.
THE AMBULANCE ON 1800 008 008

CHILD HEALTH CLINIC

With Lorraine McGee

2nd & 4th Tuesday of the month
Open Clinic 9:00am-12:00noon

APPOINTMENTS AVAILABLE
Phone: 0428 136 381 or 6372 2111

NEXT SESSIONS:

Tuesday 14th and
Tuesday 28th November



'WHAT'S ON AT THE CENTRE'

- 26 Oct **COMMUNITY INFORMATION FORUM**
10am-3pm in the Day Room. FREE of charge. See Program on the next page or phone Helen on 6372 2111 for further details.
- 27 Oct **Diabetic Clinic with Pat A' Bell.**
Referral required from your GP for new patients. To book an appointment please phone 6372 2111.
- 27 Oct **Relationships Australia** 10am-4pm.
Phone 1300 364 277 for appointments
- 27 Oct **Alcoholics Anon (AA)** Holy Trinity Church St Marys at 8:00pm. Please phone 6372 5026 for further details
- 30 Nov **Women's Breast Cancer Support Group** Christmas Luncheon 12 noon Lure's Book Shop, Scamander. Phone 6374 2267 or 6374 2275 for details.
- 30 Oct **Social Worker** available at St Marys - Helen Jennings phone 6372 2111
- 31 Oct **Social Worker** available at St Marys - Helen Jennings phone 6372 2111
- 1 Nov **Alcoholics Anon (AA).**
Anglican Church St Helens at 8pm every Wednesday evening. Phone 6372 5026 for further details
- 1 Nov **Day Centre** outing to Eureka Farm and Trout Creek.
- 3 Nov **Alcoholics Anon (AA)** Holy Trinity Church St Marys at 8:00pm. Please phone 6372 5026 for further details
- 6 Nov **Hospital Auxiliary** meeting 2pm
- 7 Nov **Relationships Australia** 12noon-3:30pm
Phone 1300 364 277 for appointments
- 10 Nov **FIRST MEETING- Cancer: Critical Illness Sufferers & Carers Support Group** Meeting Room at the St Marys Fire Station- Recreation Grounds. Phone Noeline for details on 6372 2884.
- 14 Nov **Child Health Session** with L. McGee
9am-12noon. Phone 0428 136 381

WOMEN'S BREAST CANCER SUPPORT GROUP

CHRISTMAS LUNCHEON

When: Thursday 30th November,
12 noon

Where: Lure's Book Shop, Scamander

Contact: Shirleen 6374 2267 or June 6374 2275

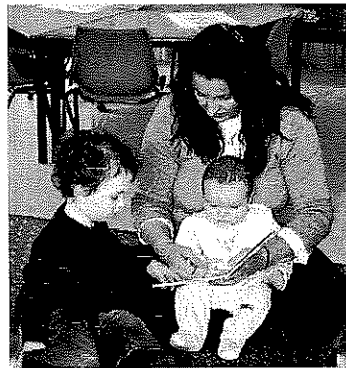
Mon	Tue	Wed	Thu	Fri
			26TH OCTOBER • Aust Business Week	27TH OCTOBER • Aust Business Week • Business Week Awards
30TH OCTOBER • POOL CHANGE ROOMS OPENING 1.30pm • Primary Assembly 11am	31ST OCTOBER •	1ST NOVEMBER • Leaver's Seminar • Gr. 6 from Bicheno and Fingal • Pre-tertiary Art Exhibition	2ND NOVEMBER	3RD NOVEMBER • STUDENT FREE DAY
6TH NOVEMBER • RECREATION DAY	7TH NOVEMBER •	8TH NOVEMBER • Get Walking week • Gr. 6 from Bicheno and Fingal	9TH NOVEMBER • ENE Miners Athletics • Get Walking week • Primary and Secondary Performance	10TH NOVEMBER • Get Walking week • V8 Supercar trip

Reading Together

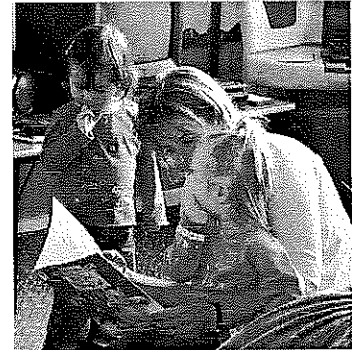
STATE LIBRARY OF TASMANIA
LIBRARY



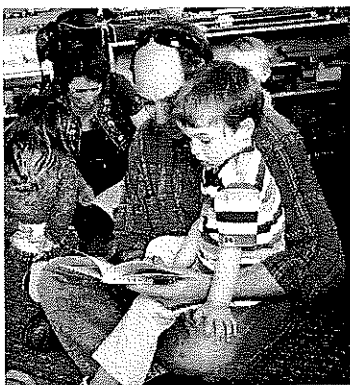
Zoe Faulkner with her mum
Linda and little sister
Bonnie.



The Woods family - Ziggy,
Rachel and baby Harry.

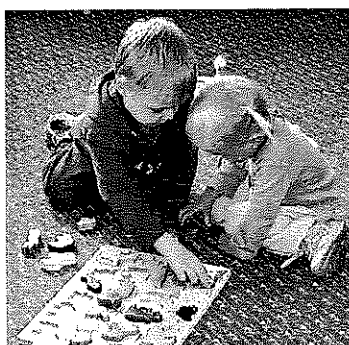


Genevieve Aulich with
twins Kate and Bridie



Tanya and Tilly in
background,
Andrew Russell with Fraser
in foreground

St.Marys District High School, in conjunction with the State Library of Tasmania, are offering a fantastic new program **"Reading Together"** in the Kindergarten on Fridays from 9.30 - 10.30. The program is designed for pre-school children and their parents. It involves sharing books, borrowing books to take home, an alphabet letter focus, singing rhymes and songs and doing art and craft activities. The program is delivered and planned by a teacher. Children are having heaps of fun learning together with their parents. Come along and join in! The sessions are free. For any further information please contact the coordinator, Susan Miles on 63723900.



Sebastian Heatley and
Jane Harriden doing a
puzzle together



Paul Aulich and son
Lochie

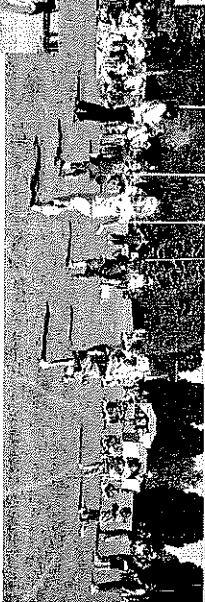


Anna Thomas and
daughter Catherine

THE LIFE OF A HURRICANE

A

Hurricane



Avalon Chippindale
2/3 Morrison

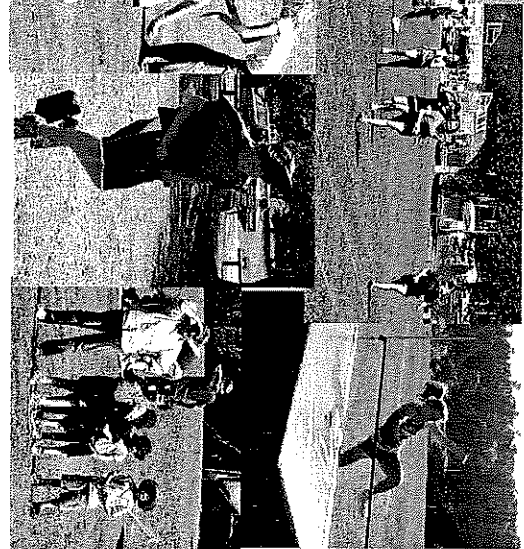


Jayne Cooper
2/3 Morrison



Jayden Webb
2/3 Morrison

Jacinta Kringle
2/3 Morrison



Fingal Valley
Neighbourhood House Inc
"The Old Tasmanian Hotel Community Centre"
Talbot St. Fingal 7214

Ph/ Fax 63 742344 Email fnh@courier.tas.gov.au

More information -Contact Debbie Speers

The Neighbourhood House is located opposite Holder Bros Supermarket in Fingal.

FVNH office hours are 9 am - 4pm Mon, Tue, Wed, Thur.

The neighbourhood house offers a great range of courses each term, as well as great service to its community. All courses are held at the FVNH house and free childcare will be provided if arranged prior to the day.

CONGRATULATIONS TO OUR NEWBORNS IN FINGAL

Paul and Tennille Burt on the recent arrival of their son William in October

Steve Troy and Suzy Smith on last weeks arrival of their son Riley

Whats Happening in OCTOBER at Fingal

Jewellery Making

With Araja

This first course was held on Friday the 6th of Oct and judging by the first session, this was really enjoyed by all. Held on the 1st & 3rd Fridays of each month

Materials supplied.

10.30 Start

Cost \$16.

Next Date 3rd Nov

Kids Craft Club

This is a new course starting each fortnight from Thursday the 26th Oct after school from 4.00pm - 5.30pm at the centre, this will include all types of basic craft work, eg scrap booking suited for both boys & girls. Bring along from home a drink, some ideas you would like to do and the cost will be \$2. If you would like to use your own materials bring them along. Bookings essential.

November

Bear Making with Bronwyn

Thursday 2nd Nov Time 10am - 3 pm

Materials supplied

Cost will be \$30. but if you have your own it will be \$12.

BYO needles, cotton & scissors

Leadlighting with Jenny Symons from

Lucifer Leadlighting

"Last chance for an excellent course this year"

This is a weekend course and hopefully will be held around the middle of November onwards. This course has always been supported very well and produced some excellent work from very talented people around the valley. Cost \$80. Plus

NOVEMBER

Eating With Friends

Early Christmas Theme

We are having our last for 2006 E.W.F. luncheon on the 29th Nov for a noon for 12.30 start. Prize for the best Christmas decorated hat.

Cost \$10. Per person

Bookings are essential

Sewing

We also have tutors/instructors in the following courses if you are interested we would love to hear from you. *Basic Sewing* Simple, easy ways to learn and enjoy sewing without the hassle. *Basic Quilting*

Craft Club

The Fingal Craft Club meet every Tuesday except school holidays.

Time 9.30 till 2.30. Cost \$2.50 or \$5.00 if you need childcare.

The more the merrier. !!!!!!!

Play Centre

Playcentre is for children aged 3 and over and is held each Monday from 9.30 - 1.30 Final Playcentre will be 27th Nov.06

We are having lots of fun organising our annual Xmas

Playcentre and Playgroup break-up party for the 5th Dec, with plenty of activities happening. Santa arrives at 12.30pm. Any small presents can be dropped off prior to the day with name of child starts at 10.00am-2.00pm. No Charge.

Play Group

Its great to see so many faces coming along to Playgroup the numbers are increasing each week. Nice to see the facilities being put to good use.

10.30 - 12.30 each Tuesday

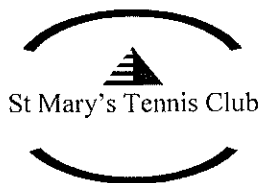
Basic Bush Furniture with E.O. Greensticks

This course will be run on the weekend of the 25th & 26th Nov, 10.00 am-4.00pm

The cost will be \$40. altogether for both days. Free Child minding available only if booked prior to the course. Bring along from home your lunch and any of the following items chisel, hammer, hand saw, sturdy string, pencil, measuring tape, and any wood you may want to use yourself, eg seat, tabletop. The main wood will be supplied.

Rear Gardens

Why not bring a group of friends over for a B.B.Q and relax in our garden, situated at the rear of the hotel, and enjoy the company of the birds chirping. Thankyou to Janine, Bronwyn, Trevor, Tom, Archie and Keith for the recent working bee held at the centre. It has made a big difference by their work. Well done!!!!!!



St Marys Tennis Club news

STOP PRESS!

Friday Night Twilight comp starting up - stay tuned .

East Coast Pennants- St Marys Red seem to be timing their peak well. Hmmm...!! -with a near win over St Marys Blue for Kay, Bruce, Gary, Eamon, Jane and Janelle. Better luck next time -third time lucky??

Junior tennis has had a shot in the arm by East Coast Tennis Coaching, who have made connections at St Marys Tennis Club. The delighted faces of the juniors, who had made measureable progress after only half an hour's lesson, was inspiring. Families, and all ages are encouraged from 5 years onwards- spaces are available on Friday afternoons and Sundays.

Contact **Harry 0409 036 245**.

A summer fun day is on the cards for all newcomers to the game - and any old hands for a bit of fun - watch this space. Also, Saturday afternoons from 1pm for social hitting practice- just turn up - someone can loan you a racquet if you need!

Wednesday ladies are always needing fill ins- 9.30am -2pm- with safe children's play area and communal childminding! Leave the housework - get out of the house and have a hit! All enquiries to Gary **6372 2524**.

ARTSPACE AND YOUTH ANNEXE UPDATE

With the Maypole Day less than two weeks away, and spring very definitely in the air, there are a few developments to report as befits a changing season. Firstly, I would like to thank the Break O'Day Woodcraft Guild for installing picture rails in the Gallery/Showroom at the garage - a supportive nudge towards the building's future role as an active community art space.

I am currently flat out getting puppets ready for the Puppet Parade - calling for volunteers to carry puppets on the day with every size to suit any volunteer from about 4 years up. There are several large puppets which will require fit adults to carry them so please don't be shy - the puppets need help! It will even be fun...

Meanwhile, the 'Arts Festival in a Teacup' workshop series is underway, with a wonderful range of arts-based workshops on offer. Hopefully everyone has seen schedules and flyers. If not please check it out. Bush Furniture making is on this Saturday and Sunday, 28/29 October - an opportunity to expand your horizons, think outside the square and take home an unique piece of furniture.

The Maypole Arts Prize Exhibition is now on view at the e.ScApe Café Gallery. Grassy Bottom Regional Arts invites you to have a look and put in your vote, as the winners will be decided by 'The Peoples Choice'. It is an interesting exhibition of local artwork. Make sure to go have a view, and vote.

Then there is the Cakebake and Flower Arrangement competitions. Cash prizes to be awarded on the Maypole Day -always a beautiful array of gorgeous cakes and spring flowers. Entry blanks are out now or available on the day.

This year's Maypole Day, Saturday, November 4, should be very good. Market stall are still available and there will be plenty to do, good food, music and dancing, a real celebration of spring.



Don't forget Sunday, November 5, - Pancake Breakfast on the Green, followed by a Garden and Gallery tour in the community bus or a guided Bushwalk with Historical content. I should think it may be a difficult choice.

Booking for workshops, market stalls or information please phone Eo on **0438 571 291**.

PS: Does anyone out there have a short film we could screen in the Micro Cinema on Maypole day? It must be suitable for general viewing, otherwise subject matter is open. Thank you. Eo.



Apologies to Trotters. No room for your ad this issue.

**DESIGNER HAIR STUDIO**

MON-FRI: KELLIE
WED-THU-FRI: EMMA
TUESDAYS: FRAN

Opening hours: MON - WED - FRI 9-5 PM
TUES - THUR 9-LATE. BY APPOINTMENT
Great for Xmas presents.

Just arrived! PPS Hot Styling Kits.
Includes:
1 x PPS Black Titanium Flat Iron
1 x PPS Flat Iron Bag
1 x PPS Hot Iron Protector Spray 250ml
1 x PPS Spray Straight 250ml
1 x PPS Shine it Drops 100ml

All these products for \$119.95. Normal Price \$205.75.

Do you like that Beach hair look?
Sea Salt Beach Packs contains:
1 Sea Salt Mist 250ml
1 Beach Styler 100ml
1 Life Jacket U.V. protector 100ml
1 Lip Balm
\$29.95

Kerasilk packs
1 x Shampoo
2 x conditioning treatments
\$36.95 Normally \$56.85

PHONE: 6372 2108

Sports Centre news by Kackhander

Starting with bowls, and it's great to report that although depleted in numbers last Saturday, the team somehow managed to record a terrific away win at Scamander. For differing reasons and commitments, it might be a few weeks before we regain the services of all our bowlers at the same time, but best wishes to those players until they can rejoin us.

Thank you to the three bowlers who helped us get a full strength team last week. It was great, Roger, Rex and Damon. This week the team plays Swansea at St Marys and it's likely we will be missing a player or two again, so if anyone can help out it would be tremendous. Also, last Saturday, thanks Macca for your efforts.

There are plans for 100 up to commence soon too, and maybe even the singles can begin. A few helpful hand may also be needed to start some work on and around the clubhouse, with projects about to start.

Now on to golf, and the comp numbers haven't been big, but a nice crew ventured to Malahide for the Scamaryhide Cup last weekend. Unfortunately with the scoring system, no points came our way, although a couple of our players recorded some good scores. But that's okay. The main thing is that we support the event. The final round is set down for November at St Marys. Details to follow next issue.

The Stableford comp from the previous week was won by Rod McGiveron. It was great to see Gary 'Speed' Maher having a hit with us that day too.

Just a reminder about golf. Although we will be having Sunday golf as usual during summer, we would still like to have Saturday golf all the time.

There generally are enough players to at least have 8 – 10 each week if they turn up around midday. The time has been set for then, and so long as they arrive we can guarantee a comp. Ladies are very welcome too, if they wish. Let's see a few there this Saturday.

Don't forget the Awesome Foursomes in November, The Mixed Foursomes Championship and the BP –Caltex Day. Hopefully soon we will have a date for this year's Dinner and Trophy Presentation too. Most likely late November or very early December.

Thanks to Dave and Karen for the Italian Tucker night last Friday. By all accounts it was a reasonable success, and will be a good start for this theme night concept. I wonder what November will be?

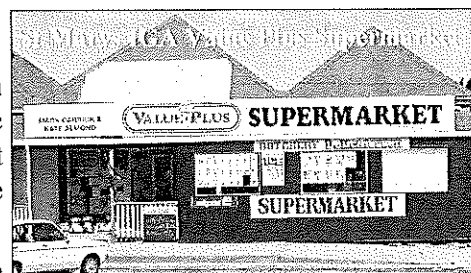
Even without rain the course is looking pretty good, and our Tuesday crew have been busy with trees lately. Just remember them in a few year's time when you clonk one of these trees and it costs you shots.

All jokes aside it's great to see trees actually going in again. Fantastic in fact.

All hands on Tuesdays are very welcome to join this elite group.

Don't forget that subs are still due.

Until next time, good hitting and rolling.



38 Main Street St Marys

Mark Kate

Phone/Fax 6372 2240

Butcher Ph: 6372 2274

Mon – Fri 8am – 6pm

Sat 8am 12 noon

All specials available next week



Surf 2 kg \$4.99



Pascal bags \$1.99



Tarax 1.25L \$1.15



Call in and ask for Tamatha

This week's meat specials

Porterhouse steak	\$14.99 kg
Mince	\$ 7.99 kg

Next week's meat specials

Rump steak	\$ 9.99 kg
Legs of lamb	\$ 8.99 kg
Lamb chops	\$ 7.99 kg

**Now taking orders for Christmas
hams, turkeys chickens etc.**