

# THE VALLEY & EAST COAST VOICE

VOLUME 38 NO. 7

EST. 1968

THURSDAY AUGUST 4, 2005

50 CENTS

## **The Governor of Tasmania, The Honourable William Cox and Mrs Cox visit St Marys and St Helens**

On Saturday, August 13, 2005, The Honourable William Cox and Mrs Cox will be visiting St Marys and St Helens.

At 10am, Mayor Stephen Salter, and Council General Manager Brian Inches, will greet His Excellency the Governor William Cox and Mrs Cox and Vice Regal, at the unveiling of the mural in St Marys, on the corner of Main and Storey Streets.

At 10.30am they will visit and inspect the St Marys Community Health Centre, after which morning tea will be served. His Excellency will depart St Marys at 11.30am.

At 1.30pm, His Excellency will attend a reception with members of the community at the Portland Memorial Hall in Cecilia Street St Helens. Light refreshments will be served.

Following this, His Excellency and Mrs Cox will depart

## **Hear Ye, Hear Ye, Hear Ye.**

St Marys Association for Community Development Inc. wishes to advise that His Excellency the Governor of Tasmania has graciously accepted our invitation to present the Mural Wall to the population of St Marys.

His Excellency will arrive on Saturday, August 13, 2005, at 10am. His vehicle will park in Storey Street, alongside the Information Display mushroom, (locally known as the Tardis).

This is an invitation to all in the community to attend the presentation, after which His Excellency and Mrs Cox, if time permits, will visit the e.ScApe Art Gallery, then proceed to the St Marys Community Centre and from there on to St Helens.

## **Rae & Partners Lawyers Barristers & Solicitors**

93 York Launceston

Ph: 6337 5555

Visiting :

St Marys Community

Health Centre

Alternate Tuesdays

9 am – 10 am

Appointments:

St Marys: 6372 2172

**Deadline for articles to be included in the next Valley Voice is 5pm Tuesday August 16, 2005.**

## **National Tree Planting day**

The Wombat Walk Weeders wish to thank all those who attended, with us, for the tree planting day, Sunday 31st. Some 35 persons were present, and a great job was done by all. Especially the great help from the Girl Guides, a wonderful bunch of St Marys children.

Approximately 300 trees and riverbank regeneration plants were planted, together with the man ferns which the Timber Communities of Australia, local branch, so kindly procured for us from Forestry.

Break O'Day Council also contributed to the purchasing of plants for this day, and let's not forget the Upper South Esk Landcare and Productivity Group, who gave so generously towards the regeneration of St Marys Rivulet. Their contribution was used to this end. The weather was most kind to us, and a great social time was had by all.

We also wish to thank the Lions Club of St Marys, who very kindly put on a barbecue for all those tired and thirsty workers.

**A BIG THANKS TO ALL THOSE WHO INVOLVED THEMSELVES**

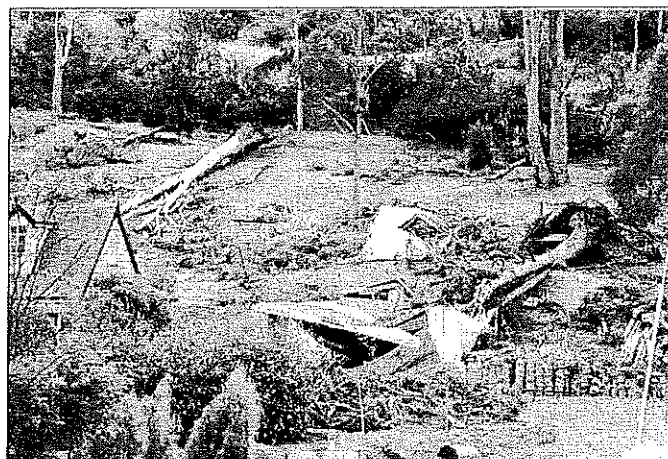
## **Want to be a storm spotter?**

**See story inside from the**

**Bureau of Meteorology**

**referring to tornadoes, even in Tasmania.**

**See picture below.**



***Damage caused by the Launceston tornado on Christmas Eve 2001.***

***Photo courtesy of Bill Laughlin***

## Community news

### Rustic Ragamuffins

Meet every Tuesday night at

**Gone Rustic** 37 Main St St Marys from 7 – 9 pm To stitch, chat and laugh! Bring your current stitching project and \$5.

Tea and coffee, plus supper provided.

Contact Rita: 0409 289 997

### St Marys Hospital Auxiliary

meets the first Monday of every month at 2pm at the St Marys Community Health Centre.

### North East Bioregional Network

Next meeting Tuesday August 16, 2005 at 10 Bowen St, St Helens.

(blue fence, opposite Ambulance Station.)

**Quilt Bank** - work together to make quilts for those in need in the Break O'Day region. Every 2nd Friday, 10 am-12 noon (check calendars in Studio window). Gold coin donation. **Gone Rustic Quilt Studio & Gallery**, 37 Main St., St.Marys (ph: 0409 289 997)

**Handmade Teddy Bears** – create a beautiful, one-off bear to keep or give away. Workshop includes all materials for 1 bear. Please bring own sewing equipment & plate of lunch to share. Cost: \$30: includes kit, tea & coffee. Date: Saturday August 27, 10am – 3pm, plus extra day to be decided. Sign up now at: **Gone Rustic Quilt Studio & Gallery**, 37 Main St., St. Marys (ph: 0409 289 997)

**The AGM** of the St Marys Association for Community Development will be held on the 26th August at 5pm. at the St Marys Online Access Centre, 23B Main Street. All welcome.

**The Break O'Day Woodcraft Guild Inc.** meets every 4th Saturday at 2pm at the goods shed behind the St Marys Railway Station.

**Thumbs down** to the driver who lost some of his load of boxes and rubbish, for a considerable way, on the St Marys Pass. You especially, should know that a law exists for loads to be covered or tied when being transported.

## Community news cont'd

### UNDER- AGE RAGE

When – Friday August 26

Where – Fingal Valley

Neighbourhood house, Fingal

Time 7.30pm – 10pm

Cost -\$4.00 per person

Refreshments available

Great prizes

**FULLY SUPERVISED**

For more info call

The Miners Cottage Co-op

**PH: 6377 1170**

### SMACD INC.

#### Paddy's Head District

#### Walking group

Despite sickness, wind and rain, five brave souls turned up for our first walk on Sunday, July 24.

We walked along Mill Ridge to the old hut site, back out, and then down the old road towards Davis Gully, and found a nice spot with a view, and had lunch.

All in all, with a half an hour out for lunch, we walked for about three hours.

The next walk is planned for Sunday August 7 at 10.30am. Meeting place will be the start of Dalmayne Road, Gray, and then walk to the old Dalmayne Mine site. A history lesson will be incorporated.

**Jim Haas**

**Project Manager**

### 60th Anniversary

**World War 11**

**In the Pacific**

**V. P. Day**

This year marks the 60th Anniversary of the end of World War 11.

**There will be no Service held at St Marys.**

An invitation has been extended from St Helens R.S.L. members to St Marys Sub-Branch, to a combined Service for this Special day, August 15, 2005.

### St Marys Playgroup

meets every Friday 10 – 12 pm in the School kindy room.

Cost \$2 plus fruit to share.

New members always welcome.

**More info: contact**

**Janelle 6372 5297**

**Tanya 6372 2534**

### Broadband for St Marys?

We are asking for expressions of interest from the local community to submit a request to Telstra for broadband in our area. There are already 18 names on their list up to date. We need at least 30 altogether for Telstra to be interested. If you are interested in having broadband, please contact **Kim** on **6372 2527** to receive an 'expression of interest' form to send to Telstra.

### PAINTER

**Ray Rosskelly**

**Phone: 6372 2218**

**St Marys**



### DESIGNER HAIR STUDIO

**Main Street St Marys**

**Lyn Emma Fran Janelle**

Welcoming new & existing clients.

**Introducing Janelle**

**to staff on Thursdays.**

**And welcoming Fran back by appointment.**

\* **Mon: 10 - 4pm with Lyn**

\* **Tues, Wed: 9 – 5pm with Emma**

\* **Thur: 9 – 5pm with Emma & Janelle**

\* **Fri: 9 – 5pm with Emma & Lyn**

**Pensioner perms & colours**

**available with Emma**

**on Tuesdays and Thursdays.**

**For all your hairdressing needs.**

**Ladies, Gents and children.**

**Come in and see us.**

**PH: 6372 2108**

## Classifieds

### Items for sale

Full set of Nicoll right hand golf clubs, bag and buggy. \$70

Too small for present owner.

P.E 250 2 stroke Trail bike, in reasonable condition. \$450.

PH: Mob: 0437 205 236

1985 Pajero Wagon, 7 seater, good condition 4x4 reco motor, bull bar, drive lights tow bar. \$5000. Ph: 6372 5650

3 ducks, 1 drake. \$5 each.

Ring 6372 2410 for enquiries.

Single bed, timber bed head, mattress, doona and pillow case. \$60 the lot.

PH: 6372 2535

DB mattress. Good condition. \$30

Boys 16" Huffy mountain bike.

Good condition. \$40

Girls 12" huffy bike. Good condition. \$20

Mens 24" Malvern Star 10 speed bike.

As new. \$80

Atari 2600 and various games. \$20

8 Cockateils. Grey colour. Last and this years. \$10 each.

Contact: Karen Polden

Ph: 6372 2438 or Mob: 0437 463 370

12½ acres, pasture, sheds, power, fenced, 700m to shops. Also 25ft caravan, 35ft solid annex. Big enough for family of 4. May separate. \$90,000. 0427 361 547

1970 Kombi rego 11/05. Nissan 2lt motor. Runs well \$2,200. 0427 361 547

**FREE to good home**, red heeler 6 months old, male, needs love and attention. Great nature.

PH: Mob: 0427 361 547

**10 % off** all classes or workshops when you join up as a member of *Gone Rustic!* Also included are mailings of free bi-monthly newsletter, free pattern, calendar of events, news and ideas.

\$15 per year. Sign up now at :

*Gone Rustic Quilt Studio & Gallery*,  
37 Main St., St. Marys (ph: 0409 289 997)

### Computer Printer –

Lexmark printer with cables, installation disk + manual. \$35 o.n.o.

Ph : 0409 289 997 or call in at  
37 Main St., St. Marys 7215

### Opportunity

Full photo lab  
equipment for sale  
due to St Helens  
Kodak shop sale.

Perfect opportunity  
to start  
your own business.

\$5,500

Phone: 6376 1815  
or 6376 3039



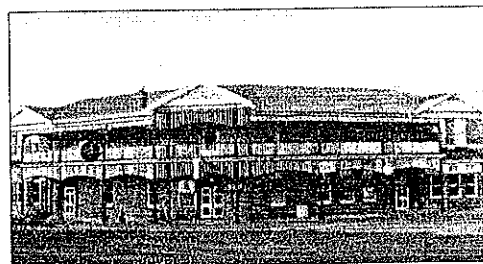
The Golden Gate Gallery  
47 High Street Mathinna  
Phone 6377 1170

We offer an outlet for  
local artists and craft  
people to sell their work.

We are looking for high  
quality art and craft and  
interesting items to sell on  
commission basis through  
our Gallery.

New office hours for  
St Marys Police Station

Monday – Friday  
9am – 12 noon 1pm – 4pm



## The St Marys Hotel Thursday Snitzel night

Chicken Parma or  
Chicken Chilli strips or  
Chicken Snitzel

All served with chips and salad.  
and

Junior Snitzel and chips  
for the kids.

All this for only \$9.99 a head  
and kids under 12 only \$4.99 each.

Ask our friendly staff  
for any Bottle Shop  
take away specials.

Ph: 6372 2181

### Thumbs up

to the staff of the St Marys  
Community Centre for continuing  
to work under very hard and  
stressful conditions.

With all the dust and noise and  
continual moving of furniture they  
and Dr Singh still continue to  
provide us with much needed  
health care.

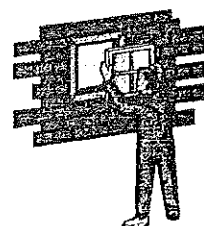
## EAST COAST GLASS

Falmouth Ph: 6372 5361

- ▶ Glass repairs
- ▶ Shower screens
- ▶ Wardrobe doors
- ▶ Double glazing
- ▶ Aluminium windows
- ▶ Security doors

Locally owned and servicing the  
East Coast.

Call David and Anne Cannon  
for prompt and reliable service.



## Have You Seen Any Tornadoes Lately?

One of the roles assigned to the Bureau of Meteorology is to warn the general public of weather conditions that could result in damage to property, personal injury or even loss of life. One such weather phenomenon is a 'severe thunderstorm'.

While all thunderstorms are dangerous (lightning does kill) some thunderstorms (known as 'severe thunderstorms') are even more dangerous because they have the potential to cause damaging wind gusts, large hail, heavy rainfall (causing flash flooding) or in some instances tornadoes, even in Tasmania.

By carefully monitoring radar and other equipment located around the state, forecasters can detect many severe thunderstorms. However a report of a thunderstorm producing 'severe weather' made by an eyewitness can be a crucial factor in any Bureau decision to issue a 'Severe Thunderstorm Warning'.

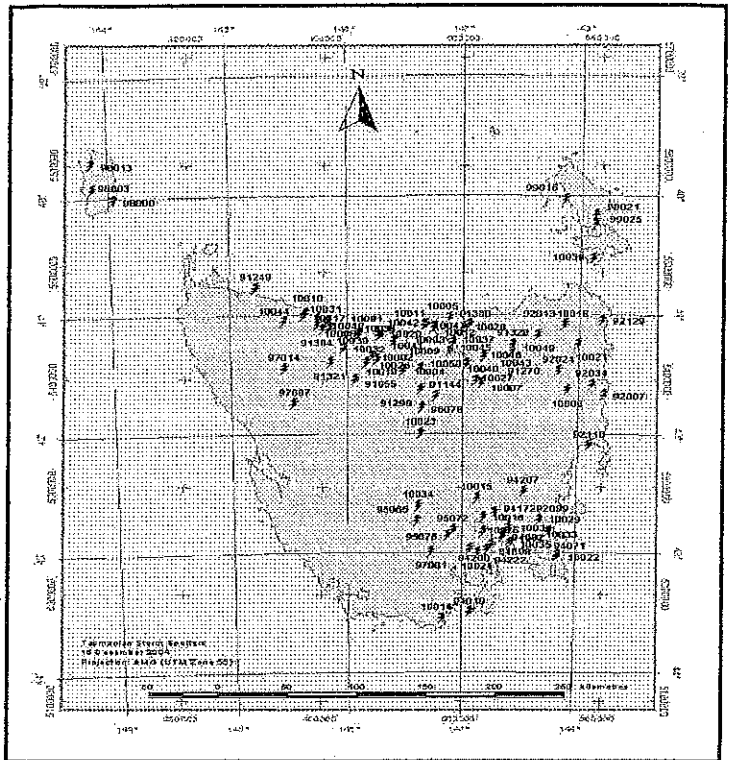
The Bureau of Meteorology is developing a 'Storm Spotter Network' around the country: a group of volunteers who, without jeopardizing their own safety, make a report if they observe a thunderstorm producing 'severe' weather.

Currently Tasmania has around 90 storm spotters and the Bureau is looking to extend the network as much as possible.

The Bureau would be keen to hear from anyone over the age of 18 interested in becoming a part of this network. Storm spotters receive a pack of information including the "Storm Spotters' Handbook" that outlines the phenomena they are asked to report on, and there is a special part of the Bureau's web site dedicated to keeping them informed of severe weather occurrences in Tasmania and on the mainland.

Anybody interested in becoming a storm spotter can contact:

**David James (ph 6221 2052) or Paul Fox-Hughes (ph 6221 2051) at the Bureau,**  
or email: [tas\\_sevwx@bom.gov.au](mailto:tas_sevwx@bom.gov.au).



**Tasmanian Storm Spotters 15 Dec. 2004**  
**Projection: AMG (UTM Zone 55)**



**St Marys Newsagency**  
Phone 6372 2143  
Open 7 days a week

Now Selling

*CONE ICE CREAMS*

- \* Kiddy: \$1.00
- \* Single: \$1.60
- \* Doubles: \$2.40

Available in  
Chocolate, Vanilla,  
Strawberry, Toffee  
and Rum & Raisin.

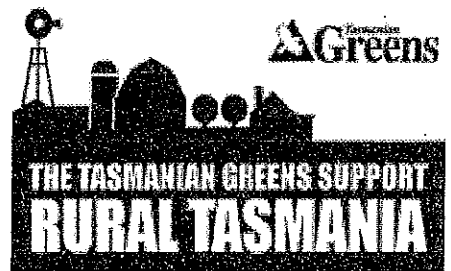
**LUCUS MILL**

**Portable  
Timber Mill**

**Will cut poles,  
planks,  
weather boards,  
slabs  
tabletops &  
benches.**

**East Coast – St Marys**

**Phone: 03 6372 2147**



**Tim Morris MHA**  
Greens Member for Lyons  
33 Burnett St, New Norfolk 7140  
Phone: (03) 6261 8048



[www.tas.greens.org.au](http://www.tas.greens.org.au)

## Police Report

There has been no criminal activity or damage to property reported in the Fingal Valley over the past two weeks. Several persons have reported to St Marys Police, their concern as to the number of motor vehicles driven in the St Marys area and on the highway, with only one headlight.

As a result there has been an increased Police presence and road checks to detect motor vehicles with this defect, with 5 defect notices issued within a 2 hour period.

For the information of drivers, the Vehicle and Traffic Standards Regulation 67 (1) state that 'a motor vehicle must be fitted with a pair of low-beam headlights if it has 4 or more wheels'. Those lights are required to be illuminated between the hours of sunset and sunrise.

The prescribed penalty for this offence can incur a monetary fine of \$110. Police have the option to issue the penalty on a vehicle defect notice that requires the driver to rectify the defect within a set time. My viewpoint is to issue a defect that's without the additional monetary penalty as this can be spent on the new headlight and solve the problem existing. But this will apply on a case by case basis.

The fact that cars are driven with only one headlight, lessens the view the driver has of the road ahead, especially in adverse weather conditions such as fog and rain, and is a distraction to other approaching motorists.

The Tasmanian Road Rules also state that in adverse weather and fog, that it is a requirement that vehicles have headlights illuminated, not just park lights.

This is a gentle reminder to drivers to check all their lights, not only head lights, but brake, park lights and indicators. An easy way to check, if there is no-one to help, is to turn on your lights at a large glass panel such as a shop front, or drive up to and back up to a wall, and check the reflection on the application of brakes and use of your switches.

If any one has any issues regarding road rules that need clarification for the benefit and advice of others, please call the police station and we shall include them in future issues.

Information just to hand: a recent report of graffiti in the Lions Park playground, to equipment and tables, has been made to police. The behaviour of defacing public property will not be tolerated, and any forthcoming information would be appreciated.

Safe motoring.  
Mike DAVIS  
Sergeant.

Advertisement

**DICK ADAMS MP**  
Federal Member for Lyons

Web Page. [Http://dickadams.id.au](http://dickadams.id.au)

Email: [D.Adams.MP@aph.gov.au](mailto:D.Adams.MP@aph.gov.au)

PH. (03) 6398 1115

Fax. (03) 6398 1120

Local Call Cost 1300 132 689



Authorised by: P. Kearney  
21 Killara Ave, Lanena

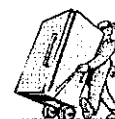
## Ransley's Appliance Service

P O BOX 136  
SCAMANDER TAS 7215

- ° WASHING MACHINE  
NOISY?
- ° REFRIGERATOR RUNS  
TO LONG?
- ° CLOTHES DRYER  
BLOWS COLD AIR?

THEN YOU NEED  
THE SERVICES  
OF OUR TECHNICIANS

RING US ON:  
SCAMANDER 6372 5307  
MOBILE: 0428 761 811



## East Coast Phone & Communications

- \* Telephone & Data cabling
- \* Commander Systems
- \* Sound System cabling
- \* TV Aerials & Tuning

**John Heron**  
30 years experience  
ACA Licence

PO Box 29,  
St Marys 7215

Ph: 6372 2402  
Mob: 0409 959 121



## R S A COURSE

(Responsible serving of alcohol)

Any person interested in attending this course, which costs \$75.00 and is going to be held on Sunday August 7, 2005 at the St Marys Golf Club

from 9am - 4pm, can you please contact Janice Viney on 6372 2608

Names must be in by Friday July 29, 2005.

## 29th Annual Changeover for Lions Club of St Marys

St Marys Lions Club held it's 29th Annual Changeover night at White sands resort on the 9th July 2005. The dinner was attended by 29 members and guests, including 7 members of St Helens Lions Club.

The Installation of new Office Bearers for 2005-2006 was conducted by Past District Governor Graeme Harris, who has supported the Club since its inception on 15/12/1975.

Outgoing President Brian Forsyth gave his report on the year's activities, which included projects such as:

Belting sales (thanks to Cornwall Coal Company). Christmas functions including stocking raffle, parade and children's party and music etc. Town decorations. Organised replies to over 100 santa letters. Various catering activities. Replaced BBQ in Lions Park, \$1800. Provided equipment to local groups such as tent, BBQ, fairy floss machine, crockery. St Patrick's Day photo competition. Donated cash to various organisations such as Tasmanian Lions Foundation \$500. Paralympics Appeal \$100. Swimming pool changerooms \$500. High School prizes \$250. Lions drug awareness \$75. Graeme Milburn cancer ride \$250. Cystic fibrosis \$250. Community mural \$200. Total monies spent or donated \$5449, and club man hours in excess of 800 hours. A minutes silence was held by all present as a mark of respect for our long standing late member, Lion Ron Sumner.

**Office Bearers for 2005 – 2006 year are**

**President: Lion Ruth McGiveron**

**Vice President: Lion Jean Legge**

**Treasurer: Lion Len Miles**

**Lion Tamer: Lion Ian Faulkner**

**Tail Twister: Lion Greg Keyes**

**Membership Chairman: Lion Robert Legge**

**Directors: Lions Kevin Faulkner, Bob Hersey, Evelyn Keyes, Charlie Cormack, Jake Smythe, David Young**

**Immediate Past President: Lion Brian Forsyth.**

Lions meet on the 1st and 3rd Wednesday of each month at the St Marys Hotel.

Anyone interested in becoming a member of the largest service organisation in the world, feel free to contact a Lions member for information.

**Acting Editor's note:** I apologise profusely for the omission of the new Office Bearers in the last edition. It was a serious oversight on my part, and I promise to remember to 'turn the page' in future.

**Here are the rules again for the Break O'Day Woodcraft Guild's logo competition.**

1. The design must be on A4 paper.
2. Must be in black and white.
- 3 Must contain the words "Break O'Day Woodcraft Guild Inc."
4. The Guild reserves the right to change or alter the winning design.
5. All entries remain the property of the Guild.
6. The competition is open to anyone.
7. You can enter as many times as you like.

All entries can be lodged at the e.ScApe Café.

Make sure you have your name, address and telephone number on each entry.

Yesterday is history, tomorrow a mystery. Today is a gift. That's why it's called the present.

**eScApe**  
Tasmanian Wilderness Centre Gallery

**Exhibiting quality Tasmanian art and design.  
with a varied range of unique Gift Ideas**

**Now Showing: NATURAL ENERGY  
AN EXHIBITION OF  
ENVIRONMENTAL BASED  
UTAS STUDENT WORKS**

**E.scape for a GREAT Grinders Coffee!!**

**Bacon and Egg Roll \$4.90**

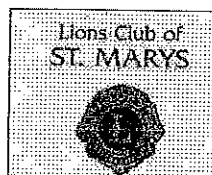
**TAKEAWAY available PH: 6372 2444**

**Open Monday to Saturday 7.30am – 8.00pm  
Sunday 8.30am – 7.00pm**

**E.ScApe**

**21 Main Street, St Marys**

**(opposite the Post Office)**



### FIRE SAFETY

As a public awareness, Fire Safety Campaign and Community Service, The Lions Club of St Marys along with the Tasmanian Fire Service and our local volunteer St Marys Brigade, are proposing to supply and fit

**'FREE OF CHARGE'**

smoke detectors to homes in our area that do not have them installed.

If your home does not have a smoke detector, please contact **John or Ruth McGiveron** on:

**6372 2231**

Or leave your details at the St Marys Post Office and a St Marys Lions Club member will contact you to arrange a time for inspection and installation.

**Allow us to help make fire Safety the number one priority in our area.**

**Ruth McGiveron, President, St Marys Lions Club.**

## THE BREAK O'DAY PLAINS -

### *A place to live and visit*

by **Jim Haas**

Cage Rattler made a very valid comment in the last issue of Valley Voice regarding utilizing part of the recreation ground as a caravan/camping area.

In 2001, consultants Ken Dorsey and Associates, through a Government grant, prepared a report called "The Fingal Valley Tourism Development Plan - Towards a clearer Future". Part of the recommendations in the plan is exactly what Cage Rattler is advocating.

However, there are a number of issues that need addressing before such a proposal would be feasible all of which were pointed out in the 2001 plan.

We have to be aware that St.Marys is not a destination, but a route to a destination. That means most of our traffic is only passing through and as we are so close to the coast, which is the destination, very few people tend to stop.

We do, therefore, need to work on ways to make our area a destination where people will not only stop, and if facilities are available spend a few days, but also bring people up from the coast on day trips etc. For people to do this they will need interesting things to see and motivating, recreational activities to do.

The planned development of the Old Railway Station by Michael and Darlene Wright, the Cornwall Miners' Heritage Wall, the development of walking tracks, the promotion given to South Sister, the town mural and the Break O'Day Plains history researched by David Clement are all positive moves and should be promoted and as the 2001 report concludes: St.Marys and its surrounds has the potential for tourist development.

As I see it, coastal areas like St.Helens, Scamander and Bicheno are a dime a dozen around Australia but St.Marys with its exceptional mountain structure, colourful history, rich coalmining heritage and if we can develop walking, mountain bike and horse riding trails around our mountains, has a more different adventure to offer.

And where would you find a town surrounded by fascinating little communities like Irish Town, German Town, Dublin Town, Gray and Cornwall? All of which have a colourful history that goes back even further than St.Marys itself.

*Continued next column*

To add to this what coastal town can offer unique businesses like St.Marys Hotel, e.ScApe Café, Purple Possum, Gone Rustic Quilt Studio, Ratha B'Zar, Mt. Elephant Pancake Parlour and of course we have Grassy Bottom and the Winter Solstice coupled with our New Years Day Races.

I believe, like Ken Dorsey and Associates, St.Marys can have a slice of the tourist industry and boost businesses and create a few jobs but first we have to sell ourselves. That means a concentrated effort from the business community, all community groups and indeed the whole community, to have a positive outlook towards our area and promote it as a magnificent place to live and visit.

The coast has its beaches but it hasn't got our mountains, heritage or lifestyle and if we learn to appreciate and enjoy it ourselves, the feeling will have a flow on effect to others.

In 2001 the Department of Main Roads estimated an average of 328,500 vehicles pass through St.Marys every year (900 per day) with an estimated 2.7 passengers. If we could lure half of these to stop and each person spent five dollars it would inject a couple of million dollars into St.Marys.

### **Letter to the Editor**

With cancer rates in Tasmania already 20% higher than the national average, what will happen to St Marys if plans to fill the Fingal Valley with private pulp plantations goes ahead?

Monocultures cannot survive without 'crop protection chemicals'. The prevailing winds will dose us with these poisons, whose long term effects are in many cases unknown. Exposure in childhood carries the highest risk factor, but we can all expect anything from the non-specific symptoms of chemical sensitivity to cancers.

There would not be much our one doctor could do for us and the possibility of long term genetic damage could have heartbreaking consequences. It is perhaps no coincidence that of all the funds available to promote tourism, virtually no money has been spent on St Marys.

We have clearly been doomed dispensable, and our area earmarked for pulp production. 40,000 additional hectares are needed to supply the proposed pulp mill. The water demand calculated on the basis of 200mg/100 hectares annually would equal 80,000 megalitres of water a year. On a ten year rotation that would be 800,000 megalitres.

Correct me if I am wrong, but I suspect there may not be that much water in the Esk system, and that would be in addition to the water presently being used by plantations already established in the catchments.

If you add up loss of water, long and short term effects of chemical exposure on the population and the loss of potential tourism, what is left?

If we wish to protect our way of life, and offer any future for our children here, we will have to fight for it. People power is our only hope. Please consider. Meeting at e.ScApe Café Sunday August 14, at 4pm to discuss this issue.

Eo Greensticks.



**Greg Keyes**, a National / International presenter of Performance Skills, recently shifted with his lovely Dutch wife Evelyn to Tasmania from Europe, taking up residence on top of Mount Elephant, on the East Coast.

Greg is considering sharing a part of his extensive knowledge initially for one or two 3-4 hour workshops in an endeavour to test the interest, talent and development potential of interested folk from the North East of Tasmania, with hopes of producing productions adding to the artistic treasures already being served on the North East, but with further hopes eventually of developing such to share in professional venues in Launceston and Hobart.

Obviously, productions require not just talent on-stage, but in the many domains behind the scenes, to produce an exciting and professional result, so all queries will be most appreciated, to fathom such interest in this possible further development for the North East of Tasmania.

*A brief history of Greg Keyes in the Artistic Domain is as follows:*

#### **Gregory J. Keyes**

Greg has been a Performer / Concept-Production Creator / Director and Producer in Theatre, Cabaret, Television, and Film / Radio for over 30 years. In the 1980's and 90's he initially appeared as an extra, then roles of many well known Television series. In Theatre, he has performed in most of Australia's best known Theatres in Musicals and Non-Musical Plays over many years.

As a producer/director, he has produced over 100 productions ranging from Comedy, Drama, Children Pantomime, Special Events to full scale Musicals and Touring Productions. Performed in over 100 productions (both professional and non-professional), plus worked in most all departments as part of the Theatrical creation process. He has been appointed Artistic Director of a number of Groups and Organizations over many years. With many productions he has either directed or performed in, such has been nominated for multiple awards and many winning.

His foray into Theatre / Television, etc began in the 1970's, as a form of escapism from his often stressful Law Enforcement duties, however his love and involvement in Theatre grew to become a full time occupation in most all domains of production. He was the concept creator of "T.A.R = Total Audience Reality" in 1985-6 and introduced such concept to the Theatrical World in his Production of "Fiddler on the Roof" (A Mini Documentary on the concept creation and introduction was created by Jennifer Byrne (later with 60 minutes) for the "SUNDAY Program" for Channel 9, Sydney, Australia for National and International release). The concept was further trialed and extremely successful for his musical productions of "Little Shop of Horrors", "Sound of Music" the Peanut musicals "Snoopy!!!", "You're a Good Man, Charlie Brown", Hans Christian Andersen, "The Mace", "Bells are Ringing", "Seesaw", "No, No, Nanette", etc as well as his Plays such as "One Flew over the Cuckoo's Nest", "Stepping Out", "The Golden Age", "Not Now, Darling", "The Removalist", to mention a few.

His T.A.R concept was unveiled internationally in 1987 by Mr Keyes at a Global Theatre/Television Convention in Hilversum, Netherlands and as previously stated published by the International Theatre Institute in 1988. It is now in use globally in many hundreds of productions.

Greg was CEO of Absolute Concepts of Entertainment Pty Ltd from 1986-1995.

Since 1995, Greg has been a major contributor in Performance and Concept Creativity Skills development globally, presenting at leading conventions on these subjects as well as Leadership, Self Development Methodology and the Wellness Vocations. He won and was presented the 'Global Award for Performance and Presentation' in Las Vegas, Nevada in June, 2002. He has been honoured in many ways for his many contributions in various vocations, not least his inclusion in the prestigious 'Marquis Who's Who in the World' editions 20, 21 and 22 (2003-2004-2005) and just been notified he will also be listed in the 2006 edition.

To share your interest in possibly being involved in this development, please contact Greg or Evelyn Keyes on H: 6372 2526, M:0400640272 or email: [gkeyes@intas.net.au](mailto:gkeyes@intas.net.au)

## **C & D EXCAVATIONS** .: Local Owner Operator

Phone Dana 6372 2033 or Craig 0439 722 032  
FOR ALL YOUR GENERAL EARTHWORK NEEDS

- |                 |                                                      |                         |
|-----------------|------------------------------------------------------|-------------------------|
| ◆ Dams          | ◆ Bridge Construction                                | ◆ Track loader          |
| ◆ Roading       | ◆ Road gravel available                              | ◆ Root rake             |
| ◆ Slashing      | ◆ D5 Dozer                                           | ◆ Bucket & forks        |
| ◆ Fire breaks   | ◆ 20 ton Excavator with log & grabs, bucket & ripper | ◆ Compaction roller     |
| ◆ House sites   |                                                      | ◆ 4WD Tractor & Slasher |
| ◆ Land clearing |                                                      |                         |



## Letters to the Editor

I am extremely concerned at the amount of good prime farmland being bought, or leased, by giant timber companies and planted into trees.

And what is more concerning to me are the strong rumours that they are currently negotiating to buy several properties within a kilometre or so of St. Marys and Cornwall. Surely farmland is for farming and the forests are for tree planting where the process needed to grow trees does not interfere with the wellbeing of a community.

If the rumors do become a reality, St. Marys will be surrounded with a mass of trees. The magnificent views down the Valley will be gone. But more importantly, how many chemical sprays will be used on these plantations? How much ten eighty poison will be used? And being in such close proximity to our towns, how much of this spray will end up on us?

We are most fortunate to live in a good, healthy, clean air, relaxed environment, all of which are part of why our community is a great place to live and visit. I believe, however, seeing dead wildlife everywhere and helicopters spraying chemicals just outside of town will change much of what we love about our area. And what effect will the sprays have on our children's health if they happen to breathe in the chemicals?

The use of chemicals and ten eighty has been an environmental debate for sometime, but most people, like myself, have tolerated their use in the bush but once you get within a kilometer or so of a town it becomes another kettle of fish.

And what about our water system, not only for St. Marys, but all the towns along the way, including Launceston, who use water from the South Esk River.

Another aspect is our tourist industry. Tourists don't drive through the Valley to see trees, they go to the forests for that. What will it look like in ten or fifteen years when its time to harvest? Many of these properties are next to our main roads.

One of the joys of living at Cornwall is sharing our town with the many wallabies, deer, wombats, possums and the variety of bird life, including wedge tail eagles, that live in and around the town. Can we train them not to eat ten eighty baited apples or carrots, or dead animals contaminated with the poison?

I'm a supporter of the timber industry, I see it as an important part of our economy, but trees are for the forests not for prime farm land, particularly around where people live.

Come on St. Marys and Cornwall, we have a proven record as fighters, look at our hospital, doctor and South Sister campaigns to name a few.

Let's give anyone who dares to come here and interfere with our lifestyle, spray their chemical into our air, interfere with our water and waste our wildlife, a message.

We are going to stand together as a community using every power, resource and environmental group available to us to stage a strong protest against anyone who poses a threat to the health and wellbeing of our neighborhood.

**Jim Haas**

## The Say by Cagerattler

About three issues ago in the Valley Voice, there appeared a really good piece by our new Post Office owners, who told us why they chose St Marys as their home, and how welcome they had felt since arriving earlier this year.

At last it was great to read some genuine reasons why our little community has had such a large influx of interstate residents in recent times, and I for one would like to thank our new Wombat Post family for their insightful comments about the area.

Why you ask do I bring this up? Quite simple really.

St Marys, Fingal and surrounding areas have so much going for them, but we seem to struggle finding a direct avenue to show this; albeit we have some terrific groups just busting to be an outlet for all sorts of things.

Our new residents may be a catalyst for this, because many can bring with them new ideas, new concepts and perhaps a fresh approach, to help put our community on the map.

We do tend to become a bit staid in our ways, even though we have so much to offer and celebrate. I believe we are generally uncoordinated at times when we need not necessarily be.

An obvious exception this year was the Winter Solstice, which saw not only Grassy Bottom Regional Arts involved, but many businesses, suppliers and community service groups.

This culminated in a fantastic night of entertainment and displays as outlined by the Wombat Post letter, and other evidences by many who attended. This success has all but guaranteed future success of this unique event. To think that just a couple of years ago the Solstice looked doomed, but a bit of forethought and some great contributions brought together by cooperation, has turned things around.

With the greatest respect to Toursim Associations and the like, I think it would be better if our valley had its own body to market all our events and attractions as they occur, which are unique to our area. Sometimes a bit of parochialism isn't such a bad thing.

Perhaps it's about time we formed a Valley Tourist Group, which could harness all our hard-working clubs and associations to help each other if and when required. I can't imagine it would be very difficult to organise such a group, maybe along the lines of that of the Recreation Ground and Community Hall management idea of Break O'Day Council.

Not only could new events ideas be developed for our struggling valley, but resource sharing, organisational skills and infrastructure development could be decided by the people who really care.

I can't imagine there would be any group who couldn't gain significant advantage for their events with a bit of networking going on if they so desired.

Perhaps some of our newer residents would like to be a part of this.

If there is any merit at all to such a suggestion, pick up a pen and lend an ear, so to speak, through the Valley Voice.

It would be great to hear from you.

**What do you think?**

# PLANTATIONS

Over the past week there has been community concern about reported sales of farm properties surrounding St Marys to investment companies for the purpose of establishing eucalyptus plantations. It should not be a surprise. Farm properties at Upper Esk have been bought for plantations, Gunns have recently converted the dairy property at Evercreech to plantation, local farm companies such as Jalen, Fingal Pastoral, etc have been converting areas of their farms to Private Timber Reserves, absentee owners have been turning their blocks into PTRs, etc, all fuelled by tax incentives from Canberra and pro-investor legislation from Hobart.

In agro-forestry terms, trees are just another crop. However, growing and harvesting trees have potentially different environmental and community impacts than grazing or shorter cycle cropping. Trees as one component of a farm plan operated by an owner living on the land, as a crop occupying a proportion of the total property area, is one thing, but a tree monoculture operated by an absentee investment company over the total area of the farm right to the boundary fence is another- with different consequences environmentally and for surrounding neighbours and communities, as has already been proved in the North West.

The grapevine reports the sale of 3 local farm properties within 2km of St Marys, and offers being made to other property holders in the area, including along Gray Road. Further sales at the Tyne and Mathinna are also reported. It seems that farm properties in the area are being targeted in a blitzkrieg raid by large companies, seeking to acquire prime productive flat farm land close to rivers and serviced by good public roads. The shout goes up "Gunns"!, but another name has surfaced, Great Southern Plantations Ltd, a West Australian Company. St Marys may well be the bone in the middle of a dogfight.

GSP is a WA investment company, investment managers specialising in identifying and purchasing farm land for the establishment of Eucalyptus and Pinus radiata plantations, packaging the land for lease or rights to growers, and maintaining the plantations on behalf of the growers and investors. Formed in 1987, the company was listed on the ASX in July 1999. It now has land and plantations extending over 110,000 ha, total sales in 2004 of \$200m, and Net Assets over \$500m. It has 47 employees, the CEO is a John Young and the Chairman is a Peter Patrikeos. As stated on its website "it has extensive holdings of prime agricultural land, it is focussed on the establishment of hardwood plantations, its operations are supported by institutional investors including leading Australian and global financial institutions, and harvesting of its established plantations in 2004/05 will provide woodchips for export to Japan for use in paper production."

In its spin to investors, the company pointed out "At the same time as securing your financial future, your investment is building jobs and growth in key regional areas, and you are providing an export commodity. It is also good for the environment. Your investment is fully tax deductible, and will build real wealth for the investor's future, the cost of an investment is \$3000 per woodlot (plus GST), with flexible finance options to spread the cost over a term that suits you, no ongoing payments apart from a low annual insurance fee. When your trees are harvested, you will receive the net harvest proceeds, less 5.5% for management and rental expenses."

It would be interesting to have a chat with Mr Young or Mr Patrikeos over a cup of coffee in one of our local eateries, as neighbours do, to learn more of how they intend to build jobs and growth in St Marys. They could also advise us of the likely impact of their plans on local real estate values and on new settlement, on landscape impacts, effects on wildlife, impacts on water use, use of chemicals, burning regimes, effects on neighbouring properties, degradation of soil for future generations, shooting programmes, road usage, etc. It would be good to share the chat with our local MHA's, particularly leading government members such as David Llewellyn and Michael Polley, with their long family associations in the area, and of course the General Manager of the Break O'Day Council, Mr Inches, and the Council Officer with powers in respect of protecting the environment, Mr Tony Walker.

An impromptu meeting of 16 local residents took place on Sunday to discuss the issues arising from significant plantation development around St Marys and in the Fingal Valley, and whether a formal group was needed to focus community comments and to establish a common community policy. If anybody would like to be involved, or comment, please let me know, either in the street or on 6372 2647, preferably in the evening.

A provisional group name was adopted, BODCRAP, (Break O Day Concerned Residents About Plantations), but don't let that put you off!

DAVID CLEMENT

# **The CARPET WALK**

25 Quail Street, St Helens 7216  
Ph (03) 6376 2555 or mobile 0417 331 537

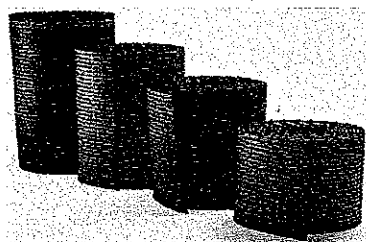
## **CERAMIC TILES**

Full range of floor, wall and decorative tiles  
displayed in the showroom

Also stocking primers, adhesives and grout  
accessories

For a free no obligation quote, give Garry Walker a  
call

## **OVER 200 RUGS IN STOCK**



## **BIG BARGAINS OFFERED FOR THE MONTH OF AUGUST**

**Earn double Easyfuel points on any purchase  
for the month of August**

**Spend \$20 and earn 4 cents per litre**

**\$100 – 8 cents per litre**

**\$1500 – 20 cents per litre**

**\$2500 – 40 cents per litre**

Also stocking domestic and heavy duty carpets – vinyl tiles – kitchen and  
bathroom carpets – outdoor carpets – rugs – hallway runners – domestic and  
commercial vinyls – all types of timber flooring – cleaning accessories – underlay  
– discounted remnants

# ST MARYS COMMUNITY HEALTH CENTRE

## **GP ROSTER- ON CALL:**

Please phone the after hours number for the doctor on call.

Dr Mohan Singh– 6372 2111

**Medical Emergencies** phone: 000  
**Or The Ambulance** on: 1800 008 008

## **RENOVATIONS AT THE CENTRE**

The St Marys Community Health Centre continues to be a work in progress. Thank you to the wider community for your continuing patients and cooperation during this time.

Work on the site is progressing well and we are 'hoping' to be completed by the end of September, this year!

Until then please be aware of a few changes at the Centre during this time.

Reception & Waiting Area– now located in the Physiotherapy room. To be accessed along the veranda. Waiting area in the hallway.

Old Reception Area– should not be accessed by anyone in the wider community. This area is still undergoing demolition work/s and is NO PUBLIC ACCESS AREA

Doctors Appointments– currently it takes 3-4 days to get a doctors appointment. If you are taking regular medication/s please don't let your script run out. **SCRIPTS WILL NOT BE TAKEN OVER THE PHONE.**

There may also be a short wait while waiting for your doctors appointments. Please be patient, we currently have one GP and he is doing his very best.

## **OUTSIDE THE CENTRE**

Please take note of Parking Areas at the Centre. It is 'recommended' that the public park their cars **BEHIND THE AMBULANCE SHED** or **IN THE CAR PARK AT HUGH STREET.**

Please leave Government Parking Only bays free. You may be asked to move your vehicle if you

Park here.– it is a tow away area.

Speed Zone– please abide by the speed limit around the car park and building areas, 40km/hr.

Thanks for your continuing support.

## **'WHAT'S ON AT THE CENTRE'**

- 9th Aug **Child Health Session** with Lorraine McGee 9am-12noon. Afternoon appointments available by phoning 0428 136 381
- 10th Aug **Breast Cancer Chat Group** 2pm at the CHC with Sandra Oliver
- 10th Aug **Alcoholics Anon** (AA) Anglican Church St Helens at 8pm every Wednesday evening. Phone 6372 2725 for further details.
- 12th Aug **Cornwall Coal** 7:30am– 3:00pm in the Day Room of the Health Centre.
- 12th Aug **Alcoholics Anon** Holy Trinity Church St Marys at 8:00pm. Please phone 6372 2725 for further details.
- 12th Aug **Physiotherapist** at the Centre
- 15th Aug **TLC Meeting** 10am in the Day Room of the Health Centre.
- 15th Aug **MOW Meeting** 1:30pm-3:30pm
- 16th Aug **Tai Chi– First session back.** For details phone Fiona Watts at the Healthy Community Project on 6376 5242. All welcome!
- 17th Aug **Alcoholics Anon** (AA) Anglican Church St Helens at 8pm every Wednesday evening. Phone 6372 2725 for further details.
- 19th Aug **Cornwall Coal** 7:30am– 3:00pm in the Day Room of the Health Centre.
- 19th Aug **Alcoholics Anon** Holy Trinity Church St Marys at 8:00pm. Please phone 6372 2725 for further details.
- 19th Aug **Physiotherapist** at the Centre

Information on this page was submitted by:

St Marys Community Health Centre, Gardiners Creek, Road, St Marys, TASMANIA. 7215

# automotive



## The VET Course FJ Project Returns to the Road, sort of .....

Front doors and guards travel to workshop 3 for body shell checking, driven by Robert Brown, David Blair, Chris Lindsay and Tyrone Blair.

This long-term rebuild approaches a major step forward, and will soon sit on its wheels for the first time in two years. Many finished components are waiting and ready, having had more than twenty students on the job over many months.



## SCHOOL DENTAL SERVICE

- Monday 15th August
- Tuesday 16th August
- Monday 29th August
- Tuesday 30th August

Please feel free to contact them regarding your child's dental health on the numbers below:

St Marys Dental Unit 63 722488  
St Helens Dental Unit 63 761713  
Northern Dental Unit 63 364100

# AUGUST 2005

Mon	Tue	Wed	Thu	Fri
8 August •	9 August • Gymnastics	10 August • Miners Training • U/16 Football • School Association Meeting 7pm • Gymnastics	11 August •	12 August • Big Newsletter
15 August • Work Experience • Primary Assembly 11am • Dental Service	16 August • Work Experience • Dental Service	17 August • Work Experience • Miners Uniforms handed out	18 August • Work Experience • Country Gold !!	19 August • Work Experience • Country Gold !!
22 August • Dance event at St Helens	23 August •	24 August • Uni TAFE Taster - grade 10	25 August •	26 August •
29 August • Primary Assembly 11am • Dental Service	30 August • Arts on Tour • Dental Service	31 August • Arts on Tour	1 September • Arts on Tour	2 September • Small Newsletter • END OF TERM 2



## NEET St Marys Campus

### Upcoming Events

- **Rock Challenge!!** - This year we have a college band entering the Tas Music Rock challenge 2005, located at the Saloon Bar Launceston. This is great to see as it's not often we have a college band enter. Members of the band are, Shaw Maddison, Sheridan Spriggs (who have previously competed in high school) and Harry Young and Christian Seddon who are also entering the high school section.
- Some of you may not have heard of the event 'Off The Rock' which is an act within the Rock Challenge where a maximum of three students perform either acoustically or electronically.  
There are two members of the band entering that section, Sheridan and Harry.
- **11/12 Camp!!** - This year 11/12 camp is at Ben Lomond around the 26th of August. We will be leaving on the Wednesday morning and returning on the Thursday afternoon. Our camp will include snowboarding, skiing, and many other exciting events.



### PATHWAY PLANNING



We are very excited to inform you of a new initiative that will complement and enhance the excellent pathway planning programs and resources we already have in our school. As part of the state government's recently released strategy for post-grade ten education and training, *Tasmania, A State of Learning*, this year all grade 8 students in government schools will be supported to develop a Learning Pathway Plan. By the end of 2007, all young people from Grades 8-10 will be involved in this process.

If you have a son or daughter in Grade 8 this year, they will be the first in our school to begin their own Learning Pathway Plans. This does not mean that your child will be asked in Grade 8 to choose a career or job. Pathway planning is about helping them to begin to develop, over an extended period of time, those skills and understandings that will enable them to make informed and realistic choices about their future pathways. Just as young people take time to develop physical skills such as catching a ball or jumping hurdles, they take time to develop other skills and understanding.

For young people in Grade 8 this means exploring and reflecting on what they learn at school, at home and in the community, how they learn, their likes, dislikes, strengths, achievements, aspirations - finding out more about themselves as a learner and as a person. As your son or daughter finds out more about themselves and the world of work, they may develop a sense of the type of career or job that may interest them e.g. helping others, working outside, working with equipment.

Pathway Planning Officers are being employed to support schools and young people develop their Learning Pathway Plans. We welcome Heather Green as our Grade 8 Pathway Planning Officer. We look forward to regularly updating you on this new initiative and to working in partnership with you and your child.

Heather Green, Liaison Officer

## Workplace reform

### 'More jobs, higher wages, stronger economy'

"The proposed Australian Government workplace reforms will increase wages, boost employment and create an even stronger economy," said Senator Guy Barnett.

As a member of the Prime Minister's task force on workplace reform, Senator Barnett said he was available at any time, subject to parliamentary sitting schedules, to personally brief community or interest groups on the workplace reforms.

"I am convinced that these reforms for a single national tribunal system, a new Fair Pay Commission, reforms to unfair dismissal laws and legislated minimum wage conditions will not only be the catalyst for even more employment growth, but will also boost wages growth while protecting the rights of workers," Senator Barnett said.

"The Government embarked on workplace reform in 1996, and our record since then has led to increased wages in real terms by more than 14%, provided the lowest unemployment for almost 30 years, provided 1.6 million new jobs, put 7 million Australians into full time work and kept interest rates and inflation at record low levels."

He said the ACTU scare campaign on changes to unfair dismissal law ignored the fact that laws guarding against unlawful termination of employment would remain in place.

### ST MARYS CHILD HEALTH CENTRE

#### *Change of Centre times*

*Commencing 1 July 2005 this Centre will be open on the 2nd and 4th Tuesday of the month.*

*Open Clinic 9.00 – 12.00 noon*

*Afternoon appointments*

**Ph: 6372 2111 or 0428 136 381**

*July dates: Tuesday 12 & 26*

*For urgent parenting issues please phone our parenting line on:  
1300 808 178*

### MATHINNA CHILD HEALTH CENTRE

#### *Change of day*

*3rd Wednesday of the month*

*By appointment*

**Ph: 6377 1124**

**Mobile: 0428 136 381**

**Parenting line : 1300 808 178**



## NORTH EAST COMPUTERS Pty Ltd

Established 1995

ABN 44 074 123 425



2/7 Pendrigh Pl. Ph: 6376 2445  
St Helens Fax: 6376 2447

Email: [sales@necomputers.com.au](mailto:sales@necomputers.com.au)  
[www.necomputers.com.au](http://www.necomputers.com.au)

**Repairs / Upgrades / Maintenance / Backups  
Disaster Recovery & Service Contracts  
- We make it work properly -**

Come and see our extensive range of computers, printers, scanners and office equipment. Get on the internet or buy a mobile phone. Be pleasantly surprised at the price.

Phone: Peter, Shan or Daryl for a free quote and friendly advice.  
Business Hrs: Mon, Tue & Fri 9am to 5pm (2 Techs available)  
Wed & Thurs 9am to 3pm Sat 9am to 12pm

## RATHA B'ZAR

40 Main Street St Marys  
Ph: 6372 2487

**Come and grab a bargain at our**

## HUGE SALE

**\* 20% and more off living art  
(indoor & outdoor)**

**\* 20% off all Van Demon leather gear.**

**\* 20% to 50% off most of our new and  
pre-loved clothing.**

**A full range of essential oils available.**

**Try our new Australian wild flower  
natural soap.**

**New long & short sleeve scull, Indian  
& Celtic design T-shirts also arriving  
very soon.**

### Rainbow Retreat Wilderness Cabins

- Sensational Ocean Views  
set on private nature reserve
- Fully self contained or catered for
- Full liquor licence

**Lot 1 Gillies Road St Marys Tas 7215**

**Phone: 6372 2168 or 0417 017 105**

**[peterpower@rainbowretreat.com.au](mailto:peterpower@rainbowretreat.com.au)**

**[WWW.RainbowRetreat.com.au](http://WWW.RainbowRetreat.com.au)**



## Thanks for the memory

By Mary-Anne Wadsworth

The trouble with finishing with the radio station was, that I couldn't say goodbye to everyone who supported my programme, "Thanks for the Memory."

### So I came up with the brilliant idea that I should try and do it live!

But where? Only one place to go and that was Doherty's. So as from Wednesday August 17, 2005, 1.30pm in the lounge bar, "Thanks for the Memory" will be coming to you live, once a month.

Gentlemen, put on your dancing shoes, come and do the light fantastic, you never know who you'll see there, and ladies, bring your knitting if you like. Enjoy a Devonshire Tea, or the luscious cakes I'm sure Denver and staff will have available for you, and **you** never know, one of those wonderful gentlemen just might ask you to join him in the light fantastic.

So come on everyone, relive all those wonderful memories of a bygone era, of music with all your favourite singers, and stories of yesterday.

**Don't forget, Wednesday August 17, 2005, 1.30pm at Doherty's Resort, with Mary -Anne. Let the good times roll.**

## Interested in joining a choir?

Well, keep August 12 free. There is to be a meeting at 3 Cameron St, St Helens, to gather like minded people together, to join an already formed choir, with the intention of bringing to the people of Break O'Day, the best in musical entertainment.

Of course we don't want the men to be shy in coming forward. Just like every other group formed, there is always a shortage of them..... we need your voices, and of course any other talents that you might have, (musicians, acting, dancing, backstage, carpentry, production etc) and that goes for the ladies too.

It's a lot of fun and a great way of joining in and meeting people if you are new in town.

**Don't forget, Friday August 12, 2005, 2pm, - 3 Cameron St St Helens.**

**For more information phone:**

**Helen 6376 2750 or Mary -Anne 6376 2969**

## Letter to the Editor

The plan by the Forestry Industry to buy up all of the farms in the Fingal /Esk Valley and convert them to plantation forest should be of concern to all of us.

Thousands of native animals, including rare and endangered species, will be needlessly slaughtered by shooting or poisoned baits, and probably aerial spraying.

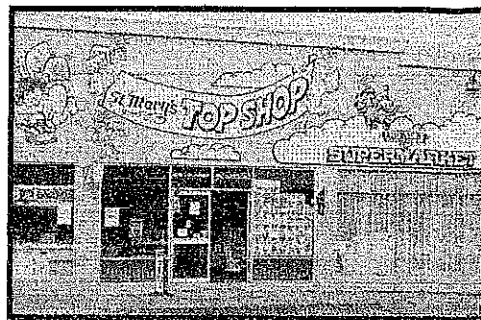
As this area is the catchment and headwater for the drinking water for the city of Launceston, I have to ask, "does anyone have the right to poison or greatly reduce the quantity by planting large areas of thirsty trees?"

The beautiful town of St Marys, with its unique mountains and valley, is a tourist gem, which is attracting even more visitors from around the world.

Are we to allow a few greedy people to put all of this at risk for personal short term gain.

We owe it to our children to see that it is prevented from happening.

Charles Trollope,  
St Marys. Ph: 6372 2980



**IGA**

## Friendly Grocer

**Barry Lyn Heather Leanne**

Welcome you to the "Top Shop"

Come and see us for

**Great specials**  
and friendly faces.

10% off frozen meat

Meat packs available to order

- \* BBQ pack \$28.00
- \* Family pack \$35.00
- \* Jumbo pack \$79.00
- \* Variety pack \$50.00

Hardware and Paint available  
including:

**Managers Special**

**6 lt Ultimate Paint \$40.00**

**EFTPOS**

and

**phone recharge available**  
**FREE TOWN DELIVERY**

**Phone: 6372 2242**

## HARRIS FUNERALS

**Lindsay & Diane**

(D. Bailey & son) A.F.D.A

**Ph/Fax: 6376 1153**

**Mob: 0418 133 420**

**Office & Residence:**

114 Cecilia St St Helens

**Chapel: 46 Tully Street**

St Helens



**We are here when you need us**  
**to arrange**  
**Burial or Cremation.**

**Pre-paid and pre-arranged**  
**funerals plans are available.**

## MEALS ON WHEELS ROSTER

Aug	St Marys	Fingal
Mon 8th	Audrey Wright	Sharon Hall
Tues 9th	Ruth Aulich	Robyn Holder
Wed 10th	Peter Williams	Barbara Saunders
Thur 11th	Liz Rice	Lynda Bean
Fri 12th	Claire Bean	Christine Woods (S)
Mon 15th	G & M Derbyshire	Mim Woods
Tues 16th	D & K Floyed	Debbie Speers (N)
Wed 17th	Ruth Mc Giveron	Tom Brady
Thur 18th	Pat O'Donnell	Patsy Death
Fri 19th	Geoff Herrmann	Robyn Miller

## Church Services

### Catholic Parish of St Marys

Enquiries Ph: 63722252

1st Sunday of each month  
Mass

Vigil Mass St Helens 6pm

Sun Mass St Marys 9am

Sun Mass Bicheno 2pm

2nd, 3rd, 4th Sundays of  
each month

Liturgy of the Word with  
Holy Communion

(Mass if a priest is available)

Vigil

Sat St Helens 6pm

Sun St Marys 9am

Sun Fingal 10.30 am

Sun Bicheno 2pm

Weekdays

Wed St Marys 10am

Thurs St Helens 10am

Friday Fingal 10am

### Anglican Parish of the Northern Midlands

Services each Sunday

Avoca 8 am

Fingal 10 am

Mathinna 2nd & 4th Sunday  
monthly at 11.30 am

### Daily Office Reading

Avoca Tuesdays 10 am

Fingal Tuesdays 12 noon

Ross Wednesdays 10 am

### Anglican Parish - St Helens

Ph: 63761144

St Helens Every Sunday

8 am and 10.30 am

### Kanga Sunday School

10.30 am - 12 noon every  
Sunday for children 5 - 12  
yrs

St Marys 10 am

(No service 5th Sunday)

### Pyengana

7.30 pm 5th Sunday months  
only

### Break O'Day Uniting Church

The Manse St Helens 63762405

St Helens 9.00 am

Fingal 11.15 am

### Seventh Day Adventist+

Hodgeman Street Scamander

Sabbath School 10 am

Divine Service 11 am



## SMALL GRANTS PROGRAM

The small Grants Program provides grants of up to \$500 to community organisations to support community projects and events. Community organisations are also able to apply for a grant to purchase new equipment.

Community groups will be able to apply for funding through the Small Grants Programs at the following times during 2005 - 2006 financial year.

### Round 1

Applications Open - 1 August, 2005

Applications close - 30 September, 2005

### Round 2

Applications open - 4 January, 2006

Applications close - 28 February, 2006

Council will advertise the funding rounds in local newspapers and on the community radio station.

For further information contact: **Chris Hughes** at the Council Office on 6376 7900 or

[chris.hughes@bodc.tas.gov.au](mailto:chris.hughes@bodc.tas.gov.au)

## CHRISTINE DEWAR F.A.I.T.T.,C.D.

(Fellow of the Australian Institute of Travel & Tourism,  
Commissioner for Declarations, Regional Tourism Consultant)

### T/A ST HELENS SECRETARIAT

Chris is pleased to announce she is now  
available from her original home office at  
13 Chimney Heights Road St Helens 7216 or  
Mobile camper to your door - you supply the power!

By appointment only - Ph: 6376 3765 / 0419 372 802

\* **Wordprocessing (Resumes /Correspondence)**  
from \$12 per page

\* **Marketing & Business Plans -**  
(Tourism & Small Business from \$30 per hour)

\* **Club / Association Auditing**

\* **Customer Service Training**

\* **Colour and B&W Photocopying**

\* **Email / Fax Service - Passport photos**

Please note: Prices above do not include GST

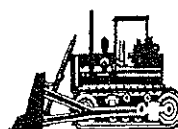
CONFIDENTIALITY ASSURED

## MILLERS SKID STEER EARTHMOVING

General Earth Works. George Miller 44 Elizabeth Street Mangana

FREE QUOTES - 6374 1024

- ◇ DRIVESWAYS/ROAD PREPARATION (Graded & rubble supplied)
- ◇ FINES SUPPLIED FOR ROADWAYS
- ◇ LANDSCAPING STONES POSITIONED (Placement of Rocks)
- ◇ ROTARY HOEING FOR HOUSEHOLD VEGETABLE GARDENS
- ◇ TREE TRIMMING & GARDEN CLEAN UPS



- ◇ TRENCHES BACK FILLED
- ◇ RUBBISH REMOVAL
- ◇ SHED SITES CUT
- ◇ LANDSCAPING

## Around Australia in 48 days *cont'd*

By Dot French

### Day 10

We rose early and left at 6am to go to Ayres Rock. (Uluru) A great many people think this is very close to Alice Springs, however it is 540kms southwest. We stopped after about an hour for breakfast at Mt Ebenezer Roadhouse.

We were served by a guy who looked like we had just woken him up and he didn't ask what we wanted, just served bacon, eggs and toast on chipped enamel plates and our coffee was in an old enamel mug.

We continued on to Erldunda, 200 kms south of Alice Springs, and turned west on the Lassiter Highway, so named after an early gold miner who perished when searching for the reef of gold he had found on a previous trip to the area.

This is one highway where 100kms is the limit, as so many large animals, from kangaroos through cattle to feral camels, roam wild and cause accidents. As you travel here there are a great many large eagles and other birds of prey.

To the left of the highway is a large flat-topped mountain, "Mt Sonnet", and people often think it is their first view of the Rock. As we approached the south side of the rock we could see it was quite purple in this early light.

The climb at the bottom of the rock is quite hard and then there is a cable to help you to pull yourself up the higher section. It can be quite windy and at times the climb is closed, as it is unsafe.

We went from there a further 36 kms to the rock formation called the Olgas. It is a nice walk into the center of this formation. On returning past the Rock, we noticed it was quite deep red, nothing like earlier. Stopping at the Ayers Rock Resort, we had refreshments, visited some shops and returned to Alice Springs at 6pm.

1080kms

### Day 11

Departed Alice and headed north again to Tennant Creek on our way to Darwin. We only stopped for a cuppa and to stretch our legs on this return journey. Arrived at Tennant Creek at 4.15pm.

528kms

### Day 12

Headed further north from Tennant Creek at 8.15am, towards Katherine. There is a roadhouse north at a truck stop called Three Ways.

Lots of small towns with character on this section such as Renner Springs, Elliott, Dunmurra and Daly Waters. Dunmurra had a buffalo in an enclosure and a crocodile in another one, who was reportedly in the Crocodile Dundee Movie.

We visited the hot springs at Mataranka, and here there is a replica of the homestead from the story of "We Of The Never Never."

*Cont'd next column*

At Daly Waters there is the only set of street lights that are not in any large town or city in Australia. We arrived at Katherine at 6pm. Here the landscape had changed again and a greener, lush area surrounded us. Katherine is very industrial and proud of its gorge and history.

704 kms

### Day 13

We left the motel at 8am to visit the Katherine Gorge. This was an experience, as we were taken up the gorge in sections. Every section there, is enclosed by rock, and you leave one boat, climb the rocks and enter the next boat. This is done until you reach the deep water of the gorge.

This gorge is very deep walled, and in the wet it is almost unbelievable to imagine it fills completely. While onboard we saw many freshwater 'crocks' sun baking on fallen trees, at the edge of the gorge.

We then continued to Pine Creek Lake and on to Adelaide River. Adelaide River has a large World War II Cemetery which is very well looked after and reminded me of the cemetery in Thailand where the soldiers who lost their lives working on the Burma Railway, are buried.

We passed the turn to Litchfield National Park, (and we were told this is by far more interesting than Kakadu) arriving at Darwin at 4.30pm. My son Michael met us here and we had a first class guide in him, for the next two days.

382 kms

*Cont'd next issue*



### Free accommodation vouchers to The Cancer Council Tasmania through Cosy Cabins Tasmania

Cosy Cabins Tasmania has made available, vouchers offering overnight accommodation free of charge to the Cancer Council Tasmania. The cabins are located at Launceston, Hadspen, Bowen Park, Mornington Park and Devonport.

They are available to individuals and families who have had a diagnosis of cancer. We envisage they could be used to have a break away, or to assist with accommodation while undergoing treatment.

You can apply for vouchers by contacting Cathy Tamplin, administration assistant at the Cancer Council Tasmania, Launceston office on 6336 2191.

### Positions vacant: Secretary & Treasurer.

**Wanted:** Volunteer dedicated to community arts & arts events. Prefer person with good communication skills & some administrative background. Enthusiasm essential. Please contact Robyn; 6372 2309 or Li-anne: 0418 446 032



### *Anomalies need further consideration*

Mayor of Break O'Day Council, Mr Stephen Salter has moved to quell concern amongst some ratepayers in the community relating to the introduction of tenement rating for properties that have been identified by the Valuer-General as being separately occupied or capable of separate occupation.

"As a result of this process a number of anomalies have been identified which need further consideration", the Mayor said.

"I have been working closely with the General manager and Council staff to address these issues, and have also received a request from a number of property owners and the Chamber of Commerce to consider phasing in the additional charges over a two year period", said the Mayor.

"I am willing to take this suggestion to the next Council meeting as I believe that there would be support for this move. There is no doubt that the increases have in some instances been greater than anyone could have expected, and we need to identify a process to reduce the immediate impact", said Mr Salter.

If Council agrees to the phasing in of the charges, it will at least provide an opportunity for the additional costs to be spread over a longer period.

Council staff is also discussing a number of issues with the Valuers to ascertain if there are any anomalies that could, if reviewed, result in a reduction of the charges, or in some cases a revaluation.

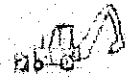
*For further information please contact Mayor Stephen Salter on mobile phone 0417 316 760 or home phone 6372 2387*

It is good to set our sights on achieving, no matter how difficult the project may at first appear. The words of President John F. Kennedy fit that goal perfectly: He said, "Only those who dare to fail greatly, can achieve greatly."

**PLASTERER**  
Plasterboard  
full house to  
renovations and repairs  
**CALL**  
**Volker Hahl on**  
**6385 2114**  
**To discuss requirements**

### **BACK-HOE FOR HIRE**

- \* For all drains, footings, driveways, cut-out and all excavations.
- \* Low hourly rates or quotes.
- \* Local owner operator.

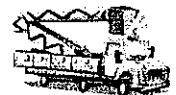


Tel: St Marys 6372 2848

### **EAST COAST CONTRACTING**

#### **Cherry Picker**

Bucket able to reach up to 12m  
Specialising in tree trimming  
in and around power lines etc.



**Paul Aulich 0419 382 287**

**Ricky Ward 0419 836 897**

**Contacts for Valley Voice. Fax: 6372 2172**

**PH: Judy: 6372 2155**

**Email: j.spilsbury@tassie.net.au**

**Accounts: Mary: 6372 2328**

Please leave written material at the  
St Marys Health & Beauty Centre, Main St,  
St Marys, or post: C/- Post Office, St Marys  
Tas 7215

**Advertising: Classifieds: 25 words or less: free**

**Community notices: free**

**Small ads. Garage sales etc. \$8, ¼ page \$15.**

**½ page \$25. Full page \$40**

**1 year posted subscription \$25.**

**Deadline for articles: Tuesday before publication.**

## **Scamander Beach Surf Shop**

6 Lagoon Esplanade  
Scamander

Ph: 6372 5529

Scamandersurf.com

Bathers Wetsuits  
Clothing Footwear

Bodyboards Watches  
Jewellery DVD's

#### **Surfboards:**

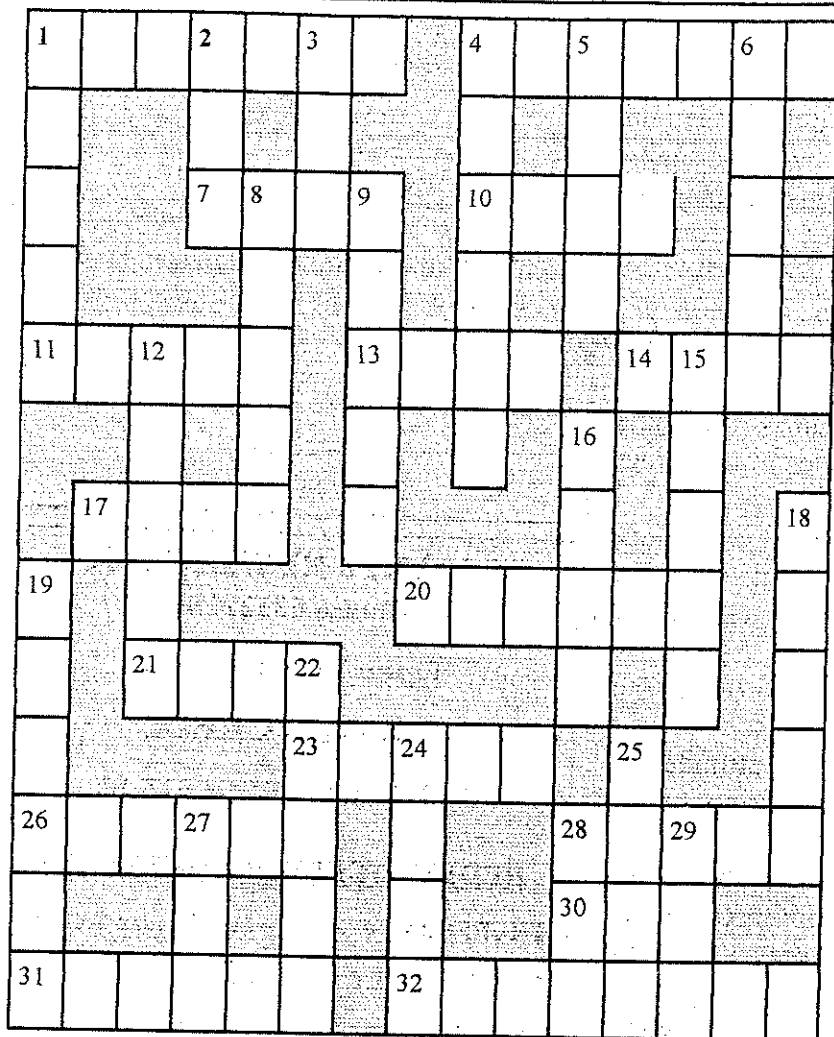
Milch McTavish  
Surftech G Boards Bic



## **Bay Surf Shop 2**

2 Pendrigh Place  
St Helens

Ph: 6376 1755



## CLUES

### Across

- 1 Under
- 4 Obligated
- 7 Snakes
- 10 Entrance
- 11 Crown
- 13 Out
- 14 Castle
- 17 Sky colour
- 20 Mad
- 21 Paddle
- 23 Proportion
- 26 Pep
- 28 Sign of merit
- 30 Era
- 31 Climbed
- 32 Gateway

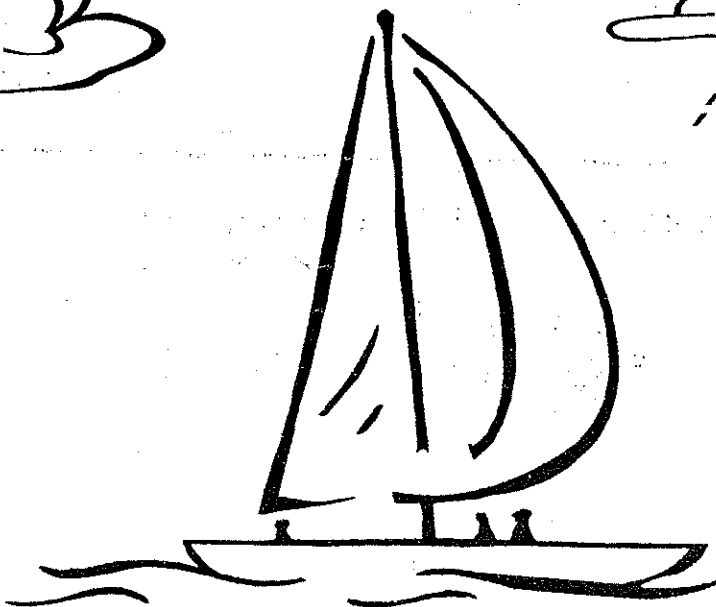
### Down

- 1 Animal
- 2 Age
- 3 Lid
- 4 Trial
- 5 See
- 6 Mistake
- 8 Extra
- 9 Sea Creature
- 12 Let
- 15 Chose
- 16 Vegetable
- 18 Top of hill
- 19 Bends
- 22 Sinned
- 24 Grow weary
- 25 Long story
- 27 Lubricate
- 28 Ban
- 29 Lair

Down  
1 Bear  
2 Era  
3 Top  
4 Ordeal  
5 Look  
6 Error  
8 Spare  
9 Shark  
11 Above  
15 Opal  
16 Bean  
18 Ridge  
21 Error  
22 Tire  
24 Sage  
25 Sage  
27 Oil  
28 Bar  
29 Den

Across  
1 Beneath  
4 Obligated  
7 Asps  
10 Door  
11 Tarn  
13 Army  
14 Fort  
17 Blue  
20 Tarn  
21 Wade  
23 Ratio  
26 Viper  
28 Badge  
30 Age  
31 Scaled  
32 Entrance

## COLOUR ME IN



## St Marys Netball news

### Division 1

**August 23** – The girls arrived at St Helens to find that Fallen Angels had to forfeit, so a scratch match was played until the rain came.

**August 30** – Lost to East Coast by 2. East Coast came out firing, playing hard and fast netball. At the start of the last quarter, St Marys were down by 8, they fought valiantly to narrow the margin to 2 but despite a great effort just couldn't turn the game around.

### Division 2

**August 23** – Lost to Surfside by 1. Another close game with arch rivals Surfside. Considering that St Marys were short a few players and others were still recovering from the flu, it was a great result.

**August 30** – Defeated East Coast by 10. Again a few players were unavailable, so a great result. Thanks to Selina from Div. 3 for playing.

### Division 3

**August 23** – Defeated Surfside by 10. A fabulous result with all players contributing.

**August 30** – Defeated East Coast by a large margin. Great work by Selina Panoff who as well as playing, took control of team placement and management of the side while Alex was away for the weekend. The challenge for this team will be to maintain their concentration and confidence going into the finals as red-hot favourites.

The St Marys Netball Club are well positioned to figure prominently in the finals in all three divisions, which is a great result for the club.

Presentation night will be on September 3, at the St Marys Sports Centre. Cost will be \$10 per family, which will cover the cost of a DJ for the night. Should be a fabulous evening, so come along and toast the success of this great bunch of girls who have so capably represented St Marys in this year's competition. Further details in next issue.

### Enquiries to:

Nicky Leedham on 6372 2383

## St Marys Tennis Club news

### Grant application

The Club has been successful in gaining a \$1500 grant for clubroom improvements from the Tasmanian State Government. We would sincerely like to thank Michael Polley for his support in the St Marys Tennis Club's application, and his interest in our local community sporting organisation.

### Sunday Pennant

We are still seeking names of players who wish to play in the Sunday Pennant roster, beginning in late August and concluding in December. Any people wishing to participate please contact the **Club Captain, Randal Faulkner** on 6372 5637 as soon as possible so our club teams can be finalised.

### Annual General Meeting

Our Annual General meeting will be held on Thursday August 25, at 7.30pm at the clubrooms. All members are invited to attend.

### ST MARYS SPORTS CENTRE INC.

Expressions of interest for the following positions are being called, for the St Marys Sports Centre Inc., by Friday August 19, 2005.

They are:

#### Greenkeeper:

Minimum 12 hours per week and dependent of vision of applicant for any additional duties within the financial capabilities of the club.

#### Bar Attendant(s)

Variable hours dependent on bar attendant(s) vision of duties and the discretion of the current committee. Development of trading would be of advantage to the applicant(s).

Applications must be in writing, marked expression of interest, complete with details of the applicant and objectives of the position as they see fit. Queries can be made to any of the committee members during the period of expressions of interest.

**R.B. McGiveron (Hon Sec.)**

## Volleyball

On the 11th August at 7pm a meeting will be held at the St Marys Hotel lounge to discuss the revival of mixed volleyball in the School gymnasium. Anyone interested please attend.

### Or contact:

**Ian Bradbury: 6372 2209**

**Mob: 0438 582 928**

**Felicity Kringle: 6372 2212**

### Christmas in July at Fingal

The staff and committee of the Fingal Neighbourhood House Inc. would like to thank everyone for their fantastic and much appreciated help with the recently held Eating With Friends program "Christmas in July".

Held at the Fingal Valley Neighbourhood House, we catered for 84 people, which included ten take-away orders.

The food was fantastic, with traditional ham, turkey and chicken, accompanied by delicious salads, followed by traditional Christmas pudding, pavlova, jelly, trifle and cheesecake.

Everyone enjoyed the warm friendly atmosphere, and we thank Warren Speers and Steve Parker, who played and sang some really great tunes.

It was great to have attending, Mr Michael Polley, Mayor Stephen Salter, Heather Butler, Chris Hughes, Inspector John Arnold, The SRC from St Marys District High School, with Acting Principal Mr Barry Le Fevre.

A very special thank you to Grace Smylie for supplying a truly delicious Christmas cake which was enjoyed by all.

Not forgetting thank you to all the very hard working volunteers from the Fingal Valley Neighbourhood House who made this event possible with the help of Mr and Mrs Claus.

*Next Eating with Friends  
Tuesday October 11, 12 noon for a  
12.30pm start.*



## Sports Centre news

Close but not quite close enough. That's how it was in the recent Pennant Regional Final against Georgetown at Mowbray. We've played in a big number of these events in the past, with stronger teams, and not done as well. So it's huge congratulations to all involved. A special mention to John Miles' 5/4 win, Chris Davern's 3/1 win, and Andrew Marshall's 2/1 win in a game against very strong opposition. Great effort fellas, and to all our pennant players who won the A Grade East Coast flag, thanks again for a fantastic effort. We'll pass on some medallions to you soon. Maybe next year for that elusive State Pennant.

A few weeks ago we had St Marys Top Shop getting behind the club with a great sponsored day. Thanks again to Barry and Lyn Harrison. And last week the ongoing support from St Marys Value Plus owners Mark Carrick and John Cox helped us conduct another good day with 18 players taking part. Special congratulations to Craig Mitchell who shot a terrific 69 off the stick to easily win the main trophy. Barry Harrison and Bob Hersey needed a count back to get a decision for runnerup prize, and Barry went within centimetres for the ultimate for golfers, of a hole in one, on Misery. Mark Birch scored a great eagle on the 8th and Craig Mitchell and Brett Leedham shared the putting trophy.

The club apologises for all the recent confusion of our upcoming, crammed up roster, but because of circumstances, events and so on, that would adversely affect playing numbers, many dates needed to change. We hope that any new dates don't preclude others from entering.

A full list of new dates are available at the club for the Men's Championships, Spilsbury Trophy, Annual Tournament, Malahide Tournament, Scamaryhide Cup, Ray Ridgers Memorial Trophy, the big AFL Day and so on., so please try and make yourselves aware of them as soon as possible. Also the Hobart House of Golf Day is still on, to coincide with the championships which gives us four sponsored days, which is great news.

Congratulations also to our ladies committee, who have gone on the front foot to avail their services to any new prospective ladies who would like to try our great game. If you are at all interested in trying golf, give the ladies a ring and organise to come along. They would love to see you.

Please also be aware that the subscription notices are now going out. The "local" locals can pick up their schedules from the club for the next week or two. The "not so local" locals will be mailed out, as will the "away" locals or in some cases the "show some interest" locals.

We're a happy bunch at the moment, with plenty to offer, and anyone interested in being a part of it all, please feel free to give us a buzz. By the way Macca, thanks for all your computer skills lately.

Thanks also to our visiting "P....pots" mostly from the coast, last Friday for supporting the club. It was great to see you all.

The eight ball team has had a good home and away season, and with finals looming, our defending champions from last year hope to continue on really well. It's good to see Captain Greg Cooper feeling better too.

Not much news from bowls just yet, but keep an eye out for future working bees to complete a few tasks for the new season.

As you can see the place is really jumping.

*Until next time, good hitting and rolling.*



### St Marys Value Plus Supermarket

38 Main Street St Marys

Mark Kate John Rosanne

Phone/Fax 6372 2240

Butcher Ph. 6372 2274

Mon - Fri 8am - 6pm

Sat 8am - 12 noon

#### Cookies Corner

##### This week

- \* Rump Steak \$ 9.99 kg
- \* Hamburger mince \$ 5.99 kg

#### Super Special

- \* Large Nichols Boilers \$5.99 ea

##### Next week

- \* Porterhouse steak \$13.99 kg
- \* Silverside \$ 6.99 kg

#### Great buys

in Soft 'n Gentle Toilet rolls.

**For those customers requiring the  
RUG doctor - it has now been  
replaced and is up and running.**

**St Marys Value Plus is the store to  
purchase all your  
stock requirements, fresh fish,  
fresh fruit and vegies,  
in - house bakery and  
in-house butchery.**

**Hey there ladies!!! Pssst!!!**

**Want to play around????**

I'm talking about a 'golf' round of course!

Cant play? Who cares!!

Bring a friend and have a 'ball'.

Equipment provided to get you started.

Commencing 3rd August, 2005

1 hour's free tuition Aug - Sept.

Fun begins 2.00pm sharp!!

St Marys Golf Club Ladies.

A friendly bunch of 'hackers'.

**CHECK INSIDE PAGE FOR  
POSITIONS VACANT AT THE  
ST MARYS  
SPORTS CENTRE INC.**