

THE VALLEY AND EAST COAST VOICE

Vol 26

No 6

Friday 16 July 1993

Established 1968

Price 50 cents

WINTER MOTORING

according to the RACT

DRIVING IN FOG

Driving in fog can be one of the most frustrating and dangerous conditions facing motorists.

In dense fog, it is easy to become confused. It is wise to travel slowly and to use the road edge markings for guidance. The desire to stay close to the centre lines on single lane highways should be avoided as this could result in a head-on collision with another vehicle. Lights should be dipped.

A common practice of drivers under foggy conditions is to closely follow the tail lights of the vehicle ahead. This is extremely dangerous and can lead to multi-vehicle collisions.

WET WEATHER DRIVING

Simply put, when driving on wet roads - slow down.

Extra care should be taken, the distance to the car in front should be doubled and all manoeuvres should be clearly and early indicated, especially in poor visibility.

Be very careful on wet roads after a dry spell. The build up of oil, grease, rubber and dust usually results in slippery surfaces.

During heavy rain, flooding can often occur from overflowed gutters and rivulets.

A car aquaplanes when it builds up a cushion of water ahead of the rolling tyre. If the tread grooves cannot allow sufficient water to pass through, the tyre loses road contact and actually floats on a wedge of water.

When that happens, brakes and steering are virtually ineffective. The remedy? Slow down until speed drops sufficiently for the tyre to make contact again.

Remember: The basic keys to safe wet weather motoring are - slow down, be alert and maintain a safe margin to the car in front. Have a safe winter!

YOUR WINTER CHECKLIST

BATTERY

Check the battery's water level and, if necessary, top it up with distilled water. Check that the battery posts, terminals and main earth terminals are clean and tight. Coat the posts and terminals with a thin smear of petroleum jelly.

LIGHTS

Check that all lights are functioning correctly and have the realignment checked.

WIRING

Check all wires and connections for fraying, looseness or corrosion. Renew any wires on which the insulation material is perished, cracked or worn.

BELTS AND HOSES

Ensure the fan belt is in good condition and is tight enough so that it does not slip. Make sure there are no leaks in the hoses, no loose hose clips and that metal parts are not chafing the hoses.

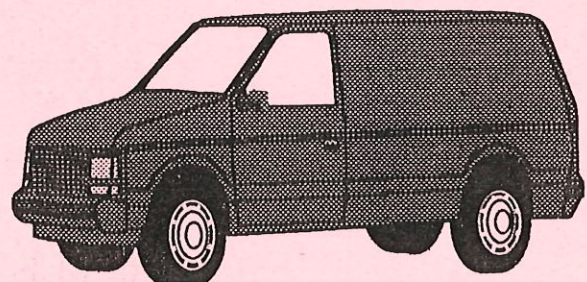
BRAKES AND TYRES

Test the brakes. They need attention if they are not effective in an emergency stop, if the car pulls to one side, or if the pedal sinks to the floor.

Make sure the tyres, including the spare have plenty of tread and are properly inflated. Check the jack and wheelbrace.

WIPERS AND WASHERS

Check that the windscreen wipers work properly and that the blades are in good condition. Check the windscreen washer and top up the washer bottle. Keep inside of windscreen clean.



CLASSIFIEDS

REDLINE COACHES... Deliver this paper quickly and efficiently. Statewide passenger and parcel service. Phone 722143.

PEAKES BUS SERVICE

ST MARYS.....BICHENO.....SWANSEA.....
PASSENGERS...PARCELS AND PAPERS
PHONE 725390

FOR SALE....69 Holden Kingswood Sedan with 186 motor, floor gear change, bucket seats, good tyres, reliable. Goes well. \$1 000 ono
Phone 751540

FOR SALE...Baby California Rabbits \$10.00
Phone (003) 722103
St.Marys Pass Rd. 7215.

VALLEY VOICE CLASSIFIEDS ARE FREE

ALL ITEMS, ADVERTISEMENTS, SPORTS
NEWS ETC FOR THE **VALLEY**
VOICE TO BE LEFT WITH THE
HEALTH & BEAUTY SHOP.

ST MARYS NEWSAGENCY

Story Street St Marys 7215 ..
Phone 722 143

STATIONERY: Vehicle Log Books, Receipt
books, Cash books, A4 Envelopes, Resumée
Folders, Leverarch and 2 Ring folders.

TAX PACK

Magazines and paperbacks for easy reading.

NEW VIDEOS INCLUDE

Rambling Rose
American Cyborg
The Player
Fortress
The Black Robe

REDLINE BUS DEPOT

GARAGE SALE

Irishtown Road, St.Marys

Barbeque, Petrol whipper snipper, ornaments,
Garden tools, 8 hp Petrol stationary motor, baby
items, electric motor (new), 20 ft 1/2 inch chain, 2
hand winches, bench vice, saw bench, spray gun,
skid chains, Makita planer, small bench grinder,
lounge suite, 200 lt drum pump, boxes of goodies
plus much more.

9am to 5 pm Saturday 17th & Sunday 18th, follow
signs.

Phone 722400

FOR SALE....Large Black Bango's Kettle BBQ.
(Similar to Webber) Portable heat indicator, Gas
Conversion Kit. \$190.00 o.n.o.
Phone 725507.

FOR SALE..... Free-arm Singer Sewing Machine
V.G. Condition, zig-zag, mending, stitches etc.
\$150.00 o.n.o. Also Fabric remnants.
Any offers. Phone 725507.

FOR SALE....SUBURU 1977 4wd
RUNS WELL \$1000.00
Phone 722578.

FOR SALE....King Size Bed - Black & White
Finish. Fully Adjustable with storage space
underneath. \$350.00 Phone 722578.

RANSLEY'S APPLIANCE SERVICES YOUR B.V.S. STORE

FOR YOUR NEW AND RECONDITIONED APPLIANCE NEEDS CONTACT THE APPLIANCE
PEOPLE ON THE COAST.

• REFRIGERATORS TO DISHWASHERS
• IRON'S + FAN HEATERS + TOASTERS
• COMMERCIAL / DOMESTIC APPLIANCES

WE ARE AUTHORISED SERVICE AGENTS FOR MOST POPULAR BRANDS AND OFFER TO
YOU A PROMPT AND PROFESSIONAL SERVICE AT ALL TIMES.

WHY NOT CALL INTO OUR SHOWROOM AT 41 QUAIL STREET, ST. HELENS (NEXT TO
R.S.L.) WHEN NEXT YOU VISIT ST. HELENS.

CONTACT: IAN & HARELLE
41 QUAIL STREET, ST. HELENS.
TELEPHONE: 76 1811

WHAT'S ON

ANGLICAN CHURCH - St Marys

Soup and Sandwich Luncheon

Time: 11.30am - Trade table -
Venue: Church. All welcome -
Date: July 20

Annual Meeting

St Marys Anglican Church July 18 after shortened Family Service. All welcome.

WOW...WOW...WOW

What a response from my last public letter.
I am overwhelmed by your response.
There will be a public meeting. Please come and voice your opinion, make your suggestions and be counted.
This is your opportunity to turn our valley around.
We can attract the tourist dollars.
We can put the valley on the tourist map.
We can have a voice in local council.
We can become united as a community.
No matter how silly you may think your ideas are, we want to hear about them.
If you are at all concerned about the future of St.Marys please stand up and be counted.
Come to the meeting and listen to ANDREW KEDDIE, LIASION OFFICER FOR SHEFFIELD.
Where.....School Staff Room
When.....Tuesday 20th July
Time.....7.30pm.

See you there. Annette Wines.

VAN DIEMAN PAVING

Lee Street
Rossarden

MANUFACTURERS & SUPPLIERS
of
INTERLOCKING PAVING STONES

- NEW DESIGNS & COLOURS TO SELECT FROM
- AVAILABLE IN 60MM TO 100MM THICKNESS
VERY COMPETITIVELY PRICED

DELIVERY AVAILABLE STATEWIDE
PHONE 852 184

B & J A SPILSBURY

BROWNS GARAGE
37 Main Street St Marys 7215

BP Products and Mechanical Repairs
Plumbing and Sewerage Supplies

{Petrol, oils, lubes, tyres and plumbing fittings
poly-pipe, brass fittings, copper pipe,
cleaners and glues

Call & see Bruce today

BH (003) 72 2233

AH (003) 72 2155

PLEASE
SUPPORT THE ADVERTISERS
WHO SUPPORT THIS PAPER.

HOLY TRINITY ST.MARYS

July 18th - 10.30am Shortened Morning Service followed by the Annual Meeting. Your attendance is needed at this meeting.

Boxes have been placed in "Brown's Health and Beauty Shop" and the Church for your gifts for the Missions. These are urgently needed. The items were printed in last edition of the Valley Voice.

HOME RECYCLERS

For your Convenience

EAST COAST RECYCLERS

have recycle bins for plastic milk bottles and cartons at SHELL OUTLETS at Avoca St Marys Fingal Scamander and St Helens

Bicheno residents can deposit their recyclables next to the Log Cabin Hardware Shop

Further enquiries Phone 002 399563

CHURCH NEWS

FINGAL-PORTLAND UNITING CHURCH

Parish Services:

Week	1	2	3	4	5
St Marys		11am	11am	11am	
Scamander	11am	9am	9am	9am	
	Kuca Club Monday 4.00pm				
Fingal	9am	9.30	9.30	9.30	
	Sunday School 9.30am				
St Helens	7pm	7pm	7pm	7pm	7pm
Parish Youth Group ring 725 139 or 761 141					
All Welcome 725 139					

ANGLICAN PARISH OF FINGAL VALLEY

FIRST SUNDAY OF MONTH

Fingal	8.45am	MP
St Marys	10.30am	HC
Avoca	5.30pm	HC

SECOND SUNDAY OF MONTH

Fingal	8.45am	HC
St Marys	10.30am	MP
Avoca	10.45am	FS
Cornwall	3.00pm	HC

THIRD SUNDAY OF MONTH

Fingal	8.45am	HC
St Marys	10.30am	HC
Avoca	5.30pm	HC

FOURTH SUNDAY OF MONTH

Fingal	8.45am	HC
St Marys	10.30am	FS
Mathinna	3.00pm	HC
Avoca	5.30pm	EP

FIFTH SUNDAY OF MONTH

HOLY COMMUNION SERVICE TIMES -
SEE 1ST SUNDAY

REV'D DAVID LE ROSSIGNOL
FINGAL 742 113

SEVENTH DAY ADVENTIST

Hodgman Street Scamander

Sabbath School 10.00am
Divine School 11.00am

FOR

SINCERE DIGNIFIED PERSONAL
SERVICE

D BAILEY & SON

AFDA

ANYWHERE

ANYTIME

ST HELENS 761 153

LINDSAY & DIANE HARRIS

FUNERAL DIRECTORS

SALVATION ARMY

Main Street St Marys (RSL Hall)

SERVICES

Sunday

9.30am Sunday School
11.00am Family Worship

Wednesday

2.00pm Ladies Fellowship

EVERYBODY WELCOME

Aux Captain & Mrs Tolputt

Phone (003) 722 352

THRIFT SHOP Wed-Fri 10am - 2pm

Pickups phone (003) 722 352

CATHOLIC PARISH OF ST MARYS

FIRST SUNDAY OF MONTH

St Helens	Sat. Vigil Mass	6.00pm
St Marys	Sunday Mass	9.00am
Fingal	Sunday Mass	10.30am
Bicheno	Sunday Mass	4.00pm

SECOND SUNDAY OF MONTH

St Helens	Sat. Vigil Mass	6.00pm
St Marys	Sunday Mass	9.00am
Mangana	Eucharistic Service	11.00am
Bicheno	Sunday Mass	4.00pm

THIRD SUNDAY OF MONTH

St Helens	Sat. Vigil Mass	6.00pm
St Marys	Sunday Mass	9.00am
Fingal	Sunday Mass	10.30am
Bicheno	Sunday Mass	4.00pm

FOURTH SUNDAY OF MONTH

St Helens	Sat. Vigil Mas	6.00pm
St Marys	Sunday Mass	9.00am
Bicheno	Sunday Mass	4.00pm
Swansea	Sunday Mass	6.00pm

FIFTH SUNDAY OF MONTH

St Helens	Sat. Vigil Mass	6.00pm
St Marys	Sunday Mass	9.00am
Bicheno	Sunday Mass	4.00pm

PRIEST: PAUL CONNOLLY

ST MARYS PHONE (003) 722 252

THE ANGLICAN PARISH OF ST HELENS

ST PAULS CHURCH

8.00am)	Every Sunday
9.30am)	Every Sunday
7.00pm	1st, 3rd & 5th Sundays

SUNDAY SCHOOL

3.30pm Mondays

PYENGANA

11.15am 2nd Sunday
7.30pm 4th Wednesday

FALMOUTH

11.15am 3rd Sundays

SCAMANDER (Home for Tea)

9.30am 2nd Sunday
10.30am 4th Tuesday

ST.MARYS GOLF NOTES by Tee-Up's Mate

The first ever NEDGA Pennant play-off final eventuated on July 4th and St.Marys won comfortably over a very determined Bicheno side. Most of the matches were reasonably clear-cut and credit must go to Malahide in hosting such a good final. The course was in very good order and the meal and hospitality was excellent.

Chris Davern who was St.Marys's captain and Mike Shepherd as Bicheno captain are also to be congratulated on the way that the final was played. St.Marys has now won 16 pennants in which 7 of these have come in the past 8 years, so it can be seen that the team does not wish to rest on it's laurels. One interesting detail in that time is that St.Marys has now won their last 26 home games, which is quite astonishing over an extended period of 8 years. The 1993 team which clinched the East Coast title is: Chris Davern (capt), Craig Mitchell (v. capt), Kim Howe, Steven Dawson, Graeme Dale, Shan Wilmot, John Newman, Andrew Wright, Barry LeFevre, Paul Davern and Rod McGiveron. The team travels to Launceston on August 15th to compete in the Division 3 Northern Championship against the 3 other regional winners to see who represents the North in the State Final. This upcoming Sunday we will see St.Marys host the Memorial Shield which is currently held by St.Helens. Each club fields a team of ten players of which the best 9 gross scores count of course there are individual trophies and a stroke competition for the non-pennant players. The event begins at 10.00am. After the game the 1993 Pennant flags and boards are presented to the relevant captains.

W LOCKETT & SONS FUNERAL DIRECTORS CAMPBELL TOWN

Enquiries may be directed through:

Mr D Casboul
St Marys 722 383

or

Mr T Pears
Campbell Town 811 167

MACQUARIE SEAFOODS

WE VISIT FINGAL EVERY SECOND
TUESDAY MORNING

HOUSE CALLS
CALL & WE WILL DELIVER

THEN ON TO ST MARYS
PARK IN THE MAIN STREET
OPPOSITE HOTEL 12 NOON - 4PM

TUESDAY JULY 27

WE CARRY FULL RANGE OF FRESH FISH,
COOKED CRAYS, PRAWNS & SCALLOPS
AND MUCH MORE

Phone PAT AH FOR YOUR ORDER OR
ENQUIRIES - 915606

A very big thank you to Geoff and Mary King for their sustained support of the Pennant team over the years. They almost never miss going to a game, and Geoff has on several occasions had to help out by carrying his trust set of clubs incase one of the team doesn't turn up.

Thanks to you both, very much.

To club golf and unfortunately at time of writing the Men's competition book was not available and I wasn't about much during the weekend so the details will have to wait until the next issue, but congratulations to Chris Davern who won this years Spilsbury Trophy. The second round was played in rough, rainy conditions and Steven Dawson also played well to record a fine 72 gross on that day.

Many thanks to the Spilsbury family for once again putting on this great 36 hole event.

In ladies golf the Barclay Shield was won by Kath Blair and Liz Clayton followed by a bottle-neck for second with three teams tying and Mary Viney and Joyce Wines winning out on a countback. In the brooch it was won by H. Hayes with 64 nett and there were some good follow up scores also.

Members don't forget to get your names up for the Foursomes Championships coming up soon, so get practising. See you next issue.

Results of golf page 6

P.6.

RESULTS

NEDGA PENNANT A GRADE FINAL

played at Malahide 4.7.93

St.Marys 61/2 def Bicheno 2 1/2

S. Wilmot 6/5 def A Longden

K.Howe square with L.Giffard

A.Wright 4/2 def C.Lyne

C.Davern 4/3 def M.Shepherd

B.LeFevre lost to S.Huddleston 3/1

S.Dawson 5/3 def S.Lockhart

C/Mitchell 5/4 def T.Longden

J.Newman 7/6 def J.McDonald

R.McGiveron lost to R.Tarr 2/1

ASSOCIATES BARCLAY SHIELD

K.Blair - L.Clayton 63

M.Viney - J.Wines 68 1/2

on countback

A.Hart -C.Gunson 68 1/2

M.Cook -L.Burness 68 1/2

Nearest Pin 7th B.Harwood

ASSOCIATES BROOCH

H.Hayes (30) 64

V. Shaw (39) 67

L.Burness (23) 69

M.Cook (18) 70

J.Lohrey (32) 70

Division 1- L.Burness 69

Putting V.Shaw 29

ST MARYS BUTCHERY

MAIN ROAD ST MARYS

TOP QUALITY

HOME MADE SMALLGOODS

PORK - BEEF AND CHICKEN
SCHNITZELS

FREE HOME DELIVERY ON FRIDAY

PHONE 722 274

COACH HOUSE RESTAURANT

UNDER NEW MANAGEMENT

VARIETY OF PIZZAS
HOT & COLD DRINKS

EAT IN OR TAKEAWAY

SPECIAL ON MINI PIZZAS
\$3.50

PHONE 722 529

FINGAL RIFLE AND PISTOL CLUB

RESULTS OF FREE PISTOL CHAMPIONSHIPS HELD ON THE 10/7/93

MENS .22 A.Napier 338

M.Herring 264

B.Cornelius 247

LADIES .22 G.Murfett 218

K.Robinson 162

S.Gillies 55

MENS CENTREFIRE B.Russell 155

A.Sarich 112

Winner of "Guess your Score" B.Russell 160
(155)

NEXT SHOOT.....Saturday 31st July -
Standard Pistol.

WANTED TO BUY.....FIRESCREEN TO
GO AROUND 1/2 BARREL WOOD HEATER.
Phone 722624

ST.MARYS TENNIS CLUB

ANNUAL GENERAL MEETING
WEDNESDAY 11TH AUGUST
7.30PM AT CLUBROOMS.

FROM THE PRINCIPAL

On Monday we were visited by some staff and parents from Lilydale District High School. Lilydale is a school of approximately the same size and has buildings of a similar vintage. I am always very interested when visitors make comparisons and I would like to pass on some of their observations.

1. The condition of classrooms and the general atmosphere of the school was continually remarked on. Nearly all of our classrooms have been recently painted and are much warmer than Lilydale.
2. There is virtually no graffiti or vandalism at St Marys compared with the situation at Lilydale.
3. Our students all seemed to be working productively and were happy and relaxed - as were staff.
4. The quantity and quality of our computer equipment was far superior due to our extra funding from Priority Projects and other grants.
5. We have a beautiful hall and gymnasium - Lilydale has neither.
6. Our uniform option arrangements greatly impressed and has been noted for discussion at Lilydale.
7. The new swimming pool, our grounds and general outdoor space they felt was quite remarkable.
8. The displays around the school were of a very high quality.
9. Our students are very polite, cheerful and well behaved.

It is very easy to take for granted just how fortunate we are. It is very satisfactory to have visitors comment on the high quality of our school.

ROB HART

SOUTH OF THE MOUNTAIN FOOTBALL REPORT

Last Thursday 17 of June 6 footballers from our school were chosen to try-out for E.N.E. Football trials. They were Tristan Clement, Dane Cumming, Kirk Bean, Matthew Viney, Adam Fletcher and Luke Faulkner.

Children from other schools participated as well.

First of all we started with a warm up and then had a training session. Afterwards we formed two sides and played a match. Different people were put on the bench so everyone got a turn and could show their skills. After the first match we had lunch. The second game got underway with everyone trying to impress the selectors. The game ended and we sat down to see who had made the final team. The people who will represent our school in the team are Dane Cumming, Tristan Clement, Luke Faulkner and Matthew Viney. Everyone played well and it was a pity some kids have had to miss out.

There will be training sessions and practice matches until the carnival is held. The carnival will take place at Hagley where the team will be billeted out.

We would like to thank Mr Bain, Mr LeFevre and other teachers, who organised this event.

We hope that our E.N.E. team will be able to repeat last years success and win back to back carnivals.

Luke Faulkner
Matthew Viney



SOUTH OF THE MOUNTAIN NETBALL REPORT

On the 17 June five schools came from Blcheno, Campbell Town, Swansea, St Helens and Mathinna. The day was cold, windy and wet. Our hands were numb which made catching the ball difficult. The six teams all played each other with the selectors watching carefully. Then they chose 18 girls to represent the E.N.E.

The standard was high which made it hard to be chosen, and everybody tried their best. Rebecca and I were selected for the team with Nadia Fraser and Erica Fearman as reserves. We are very proud to have the opportunity to represent St Marys and the E.N.E., and hope we can do a good job.

Thanks to Miss Atwell, Mr Woodfall and a big thanks to Miss Smith for coaching us.

Elizabeth Field
Rebecca Squires

THEATRE SPORTS FINALS EVENING

The Grand Final of the Theatre Sports Competition will be held on the evening of Thursday 15 July in the school hall. The programme for the evening will be as follows:

6.30 - 6.55	School bands in concert
7.00 - 7.45	Theatre Sports (Student Final)
7.45 - 7.55	Interval
7.55 - 8.00	Cinderella - Grade 9/10 performance
8.00 - 9.00	Theatre Sports Challenge Match (A Staff team v A Parent team v A student team)



WINTER

When it's winter sometimes the snow comes and we play snow fights.

In winter it rains and there's lots of floods.

Now and then we go outside ready for the snow to come.

The birds go away.

Everyone is very excited and they're mostly outside ready for everything.

Rain pours down and it's very wet.

by Jason



BOOK CLUB

The Book Club has been extremely well patronised this year. As a result we have collected 4000 bonus points. This enables us to choose free books and materials for the school.

Congratulations everyone who has purchased books from the Book Club. They are excellent value and quality and obviously the bonus points are a real asset to the school.

Barry LeFevre
ACTING AST 3

* * * * *

WINTER

Winter is cold and sometimes icicles fall from the top of caves.

I love snow. I make big balls of snow and I throw them at my brother and then he does exactly the same thing.

Now all the people are enjoying winter and when it is spring they will miss winter but they will enjoy next winter.

The people are enjoying the snow. Nearly all the people are going to the mountains.

Everyone is not going outside because it is raining now and sometimes the rivers over flow and the water from the rivers splash on the roads.

Regularly it is foggy and sometimes it becomes sunny and sometimes it is windy and cold.

By Drew



ASTHMA

Mrs Pam Davis, will be conducting the following:

July 21

9.00 - 11.30 p.m. test high school students
and others

July 23

re-tests

Parents Welcome!!!

1.5 Million Australians Need The Support Of The "SALVOS"

A record 1.5 million people sought help from the Salvation Army last year, according to the agency's first report on the service nationwide.

It warned that 40,000 single adults and families would become homeless in the next 12 months because of the recession and high unemployment.

The report, entitled 'Building the Future', revealed a bleak picture of a society in turmoil. More than five million meals were handed out last year by the Salvation Army.

The agency spent more than \$6 million in giving people cash, food and accommodation vouchers. Demand for help constantly outstripped the army's ability to respond.

In a St Kilda crisis centre, cash and food vouchers were often used up within two hours of the centre opening each day.

The report said alarming levels of domestic violence and sexual abuse were the biggest causes of an increase in youth homelessness. A study of 200 young homeless people in inner Melbourne found that 40% of the young women had been sexually or physically abused before they left home.

The report said there was an appalling lack of services to support families going through hard times and the few preventive services available were being cut because they were viewed as "non-essential" in tough economic times.

"While economic restructuring might offer stimulating challenges to governments and the business community, it has been a crippling experience for displaced workers, their families and communities. It results in diminished control over our lives and is causing a political backlash as resentment increases."

CARPENTER

Craig Oates

NEW & OLD WORK
PLASTERING

PERGOLAS
SUNDECKS

PAINTING

WOOD HEATER SUPPLY & INSTALLATION
BATHROOM & KITCHENS A SPECIALITY
NO JOB TOO BIG OR TOO SMALL

CALL FOR A FREE QUOTE

3 GREY STREET

FINGAL

PHONE 742 312

BISHOP GUNTON RAE

Barristers & Solicitors
41a Cameron Street
Launceston

Visiting St Marys alternate Thursdays 9am - 10am

50 Main Street St Marys

Phone 340644 for appointments

**ACCEPTING INSTRUCTION IN
ALL LEGAL MATTERS**

Bipartisan political support was needed to plan for both economic growth and community stability. People were experiencing alarming levels of mental stress because of the pace of modern life, the recession and significant changes in family and social structures.

The reduced use of institutions in the mental health system, without adequate replacement services, worsened the situation.

The report said the lack of affordable long-term housing for the disadvantaged was of concern. Public housing makes up only five per cent of Australian's total housing stock.

The 64-page report said the Salvation Army was the largest provider of crisis accommodation for homeless people every night.

The army spends more than \$170 million a year on social and health services. Half the funding for social services is provided by the government.

The report said that the Salvation Army should tackle sexual abuse within the community and develop strategies to help young women who had been sexually abused.

It also called for improved services for homeless people in rural areas and new welfare services in the outer-urban growth corridors of large cities.

TASMANIA'S social security bill has climbed by quarter of a billion dollars in just three years, with a record 165,000 people needing assistance.

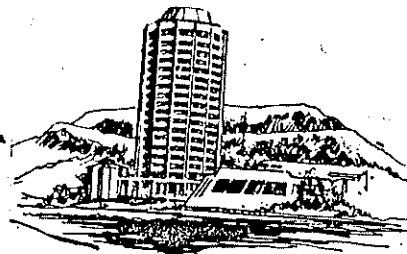
The forecast for the coming year is bleak, with welfare agencies predicting widespread hardship and social dislocation for a growing number of Tasmanians living on the poverty line.

As the state still struggles to recover from the worst recession in 60 years, the latest figures from the Department of Social Security reveal that the number of people in Tasmania receiving social security payments has jumped by almost 19,000 in the three years from 1989 to 1992.

CND... P



**MEALS ON WHEELS
TASMANIA VALLEY GROUP**



Drivers and Helpers.....

**You are invited to register
for the
FIFTH NATIONAL MEALS ON WHEELS
CONFERENCE**

which will be held during

September 13-15 1993

at

**Wrest Point Hotel , Convention Centre
Hobart, Tasmania**

Conference theme:

The TEAM Approach to Meals on Wheels

Key topics:

Care in the Community - the TEAM way
The Role of Meals on Wheels in the Community Care Team
Food Technology
Catering for a Diverse Clientele
Volunteers - The Essential Ingredient
Do You Value Your Volunteers? - A Volunteer's Perspective

**REGISTRATION FORMS HAVE BEEN SENT
TO EACH MEMBER GROUP**

Please contact your Group Secretary for a registration form and details of accommodation in the Sandy Bay area which has been block booked for the duration of the Conference. A home-hosting scheme may also be available.

**REGISTRATION COST for the two days is
\$60.00**

**which includes morning and afternoon tea, and
lunch on both days**

**REGISTRATIONS CLOSE WITH
Meals on Wheels Tasmania Inc
Conference Committee, P O Box 622 Glenorchy 7010
JULY 31. 1993**

Police Report

For the information of persons, as from the 1st day of July 1993, the Police Station at St. Marys will be open 5 days a week - 9AM until 4.15PM closing between - 12.30PM to 1.30PM for lunch.

It has come to police notice that there are still a few people riding around on their bicycles and are not wearing helmets. From now on no person gets a warning they receive a fine instead.

Other things that people seem to be ignoring is, drinking and driving. This offence carries a very stiff penalty and the loss of your drivers licence, so remember if you want to drink and drive, you have no one else to blame but yourself if you are caught.

When vehicles are driven at night they have to have all their lights in working order. I have of late noticed several vehicles driving around with one head light, tail light or no number plate light. This is the responsibility of owners to make sure that all the vehicles lights are in working order.

To finish off, although it has been some time since Police asked people of St. Marys, for their assistance in doing a search along and around the Break O' Day River area. The response was overwhelming, and to those people who helped and others who volunteered their help, I say thank you as it is extremely pleasing to see when required, people do help.

D. C. Knight

D.C. KNIGHT.
SENIOR CONSTABLE 718

ST MARYS HOTEL

Tim Scott
Licensee

Phone 722 181

Cold Beer - Counter Meals
and all your
Bottle Supplies

DINING ROOM available
for special parties

SPECIALS

SCOTCH \$23.95
STANLEY WINE CASKS \$9.00

From p.9 SALVO'S NEED CONT

There were 165 916 social security recipients in 1991-92 receiving \$887 567 000 compared to 146 938 recipients in 1989-90 receiving \$625 656 000.

The unemployed, age pensioners and sole parents represent the biggest areas of growth, with 11 000 more people receiving Newstart and Job Search allowances, 2500 more people receiving the age pension and more than 1000 more people receiving sole parent pensions.

The problems of high unemployment and an ageing population are predicted to remain in Tasmania for the long term.

Welfare agencies say they are struggling to cope with demand and while some have put in submissions to the State Government for funding in this year's budget, they are uncertain of success.

Last year, the Government allocated \$400 000 under its Family Assistance Programme to help alleviate suffering in the community caused by the recession.

Demand had continued to grow even from those record levels of last year. One wonders what is going to happen if demand continues to increase. There's no way we are able to cope.

It is with sadness that I say that the greatest growth industry is the welfare industry.

The most staggering figure is that a state the size of Tasmania had its unemployment size swollen by 11 000 people. That is pretty disastrous.

As the welfare bill climbs, the number of people living just near the poverty line also increases.

For family, including a couple and two children, receiving social security payments, the poverty line is just \$40 away.

If they receive the maximum benefit it is \$379.90 a week while the poverty line is calculated as being \$337.86.

But the situation is worse for single parents. They hover between \$10 and \$30 above the poverty line.

Tasmanian Council of Social Security executive director Peter Nute says it is a week-by-week exercise how far people are from the poverty line.

The minute someone has an unexpected expense such as the car breaking down or children needing clothes, it looms so much closer.

Poverty lines are based on a benchmark income set by the Henderson poverty inquiry in 1973.

Aux Capt R Tolputt

P12

WHICH BANK IN ST MARYS WAS TRYING TO 'FLOAT' THE DOLLAR OR 'FLOAT' A LOAN LAST WEEK?

LANDSCAPING PROJECT

Praise must be given to the project being undertaken near the Railway at the entrance to St Marys. Looks good already so will be great when it's finished.

WATCH THIS COLUMN BECAUSE VERITY IS WATCHING YOU

Are you using the recycling facilities that have been provided at the tip? Give it a go, it doesn't hurt a bit.

Is there a rumbling of interest in promoting the Valley as a tourist destination??? I believe there may be.

EXTRACT from WEEKLY COURIER (31 July 1901)

A pleasing ceremony took place at Mathinna on Saturday evening when Mr W Blair was presented with a travelling bag, suitably engraved. Mr W Webb in making the presentation on behalf of the Mathinna Cricket Club, spoke of the good services which had been rendered to the club by Mr Blair.

A painful accident happened on Thursday to an old resident of this district, in the person of Mr J Williams. He was standing on a cart, emptying a barrel of water, when the horse took fright at some pigs that were running past, and it bolted. Mr Williams, in trying to secure the reins was thrown off. The wheel passed over his legs breaking one. The case is considered serious, as he is over seventy years of age.

EAST COAST GLASS

FOR PROMPT RELIABLE
SERVICE CALL 72 5361
DAVID CANNON

FOR : GLAZING GLASS REPAIRS
MIRRORS
FLY SCREEN - DOORS
SHOWER SCREENS
BLINDS & AWNINGS

COMPETITIVE RATES
WE SERVE THE WHOLE EAST COAST
AND THE FINGAL VALLEY

CLOSING DOWN SALE

GREENS AND GRAINS will be closing down permanently at the end of this month.

There will be a sale on all stock beginning 19th July.

A warm thank you to all the people who have supported us in our 3 years of trading.

KRYSTYNA, THOMAS & EBONY.

ST.MARYS SHOE STORE

CLEARANCE SALE:

- * 20% Discount on all winter stock (includes fashion shoes, hiking boots etc)
- * All Nike socks \$7 pair
- * Mens outdoor socks (black & navy) \$4.95 pair
- * Footy socks \$7 pair
- * Childrens gumboots \$10 pair
- * 20% Discount on all jewellery, handbags, belts etc.

CASH, CREDIT CARD ONLY.

SCAMANDER HIRE & DRIVE KART CENTRE

Wish to advise their Fingal Valley customers that we are building a bigger and better track at present.

We will be open for business again on **Saturday 28 August** for school holidays. Any inquiries please phone 725507.

Rates of Payment

Job Search, Newstart and Sickness Allowance

The following rates apply for the period:
1 July 1993 - 19 September 1993.

Age, Residential and Family situation	Maximum Fortnightly rate
Single, no children	
under 18	\$129.80
under 18, independent or homeless	\$214.30
18-20, at home	\$156.10
18-20, away from home	\$237.00
over 21	\$282.70
60 or over, after 6 months	\$312.10
Single, any age, with children	\$312.10
Couples	
both over 21 or with children (combined)	\$520.60
for partner 21 and over (each)	\$260.30
for partner 18-20 (each)	\$237.00
for partner under 18 (each)	\$214.30

Additional payments for children: People receiving an allowance automatically get Basic and Additional Family Payment (plus Guardian Allowance if applicable). See the card "Family Payment Rates".

Income and Assets tests

Assets test

Family/ Homeowner Situation	Assets Limit*
Single homeowner	\$112,750.00
Single non-homeowner	\$193,250.00
Partnered, homeowners (combined)	\$160,500.00
Partnered, non-homeowners (combined)	\$241,000.00

* If assets exceed these amounts, JSA, NSA or SA are not payable.

Hardship provisions apply

SALVATION ARMY NEWS TEEN SCENE IN THE CENTRE OF ST.MARYS THE COFFEE SHOP GAMES, KIOSK, MUSIC

OPENING ON FRIDAY 23RD AND SATURDAY 24TH JULY AT 7PM-10PM FRIDAY AND 7PM-10.30PM SATURDAY

WHERE

THE SALVATION ARMY HALL, MAIN ST, ST.MARYS
AGE GROUP 13-18 YEARS.
ADULT PARTICIPATION WOULD BE WELCOMED IN KIOSK AND SECURITY. CONTACT (003) 722352
YOUNGER AGE GROUP WILL COMMENCE SHORTLY 3.30PM-5PM

TO THE COMMUNITY AT LARGE

As from July 5th 1993 The Salvation Army Social Welfare Office at 9 Gardiners Creek Road, St.Marys will be open from 9am-12 noon and 1pm-4pm (Monday - Friday only). For welfare assistance and counselling please follow signs for entrance to office. For **URGENT** out of hours needs Phone (003) 722352 and ask for Capt. Mrs Tolputt (except 6pm - 7.30pm) daily.

FLANNELLED FOOLS

We played our first official game of cricket in 1826, a match between the Military Club and the Australian Club on the Turnpike Cowpaddock, which later became the Sydney Domain. Those early matches on the cowpaddock were soon an institution in the new colony. A respectable boundary fence was erected and games were played on a semi regular basis. Betting was common and there are reports of wagers laid in, livestock, grain, rum and even lumber. The game continued on the Domain, the cradle of Australian cricket, until someone burnt the boundary fence down in the 1850's. Less than thirty years later we were making our mark in international cricket, beating the English at their own game and on their own grounds

DELIGHTS OF A PICNIC.

You are sitting on stones with rheumatically bones, And a sandwich with egg in is handed you, Though the yolk for a cert, drops a blob on your shirt, And as now the others have branded you;
There are old Mrs Heath with her spit and clickety teeth

Mum and Dad, and the kids and a cousin, And they all sit around on the horrible ground, Tongues a-wagging nineteen to the dozen; But you feel very old, or your backs too cold, and long-legged beasties are biting you; Or your suffering stings from mosquito - like things that are dancing but hardly delighting you, You are loath to be rude, but you're hating the food, which is certainly unsatisfying;

Mainly damp - looking lettuce, which felons in fetters might feed on if very near dying, There is molten ice - cream, which you do not esteem, when you're dry there is milk going curdly, For the tool isn't here that they open the beer with, you've left it behind most absurdly; Then the children get hurt, lie in the dirt, and you shout at em, smack em and shake em, And you swear that again (walking home in the rain) for a picnic you never will take them.

ADVERTISING RATES

5 cm column	\$ 3.00
10 cm column (casual)	\$ 6.00
10 cm column (long term)	\$ 5.00
1/4 page	\$12.00
1/2 page	\$20.00
full page	\$36.00

Classifieds. (25 words or less free)

DR ROGER PUCKRIDGE

(DENTIST)

will be attending

ST HELENS DENTAL SURGERY

at

57a Cecilia Street

St Helens

each Saturday between 9am & 5pm

commencing 8 May

Appointments can be made either through the surgery on 761600 or through Targetts Pharmacy on 761374 (ah 445105)

ST MARYS HEALTH

&

BEAUTY CENTRE

42 Main Road St Marys Tasmania

Phone (003) 722 172 AH (003) 722 210

New stocks of decorated face washers

Many colours and designs \$2.50 - \$3.00

Decorated childrens baskets, ideal gift - \$9.50

New matchbox cars, trucks and playmat to arrive soon

Dried flower arrangements \$12.95

Knitting bags now available \$12.95

SPECIALS

Pental Soap

Vitamin E, Evening Primrose Oatmeal, Aloe Vera, Tea

Tree - \$1.95 for pack of 5

Gaviscon Peppermint Granules

Normally \$8.75 now \$4.95

Cosifits Medium Nappies with bonus face washer - \$5.95

Still a few oddments in the BARGAIN BASKET for \$1.00

VEGETABLE PIE

* 1 quantity wholemeal pastry

Filling:

- 1 tbspn olive oil
- 2 large onions - sliced
- 3 tbsps root ginger - grated
- 3 gloves garlic - crushed
- 1 red capsicum - thinly sliced
- 500g cabbage - shredded
- 500g pumpkin - grated
- 500g tomatoes - skinned & chopped
- 2 tbsps each chopped
parsley & basil
- 2 tbsps soy sauce

Roll 2/3 pastry out and line the greased base and sides of a 30cm pie dish. Heat oil in a large pan. Add onion, ginger and garlic saute gently for 3 minutes. Add capsicum, cabbage, tomatoes and pumpkin and cook gently with the lid on for 10 minutes, stirring occasionally. Stir in parsley, basil and sauce. Spoon into pastry case and cover with remaining pastry. Bake at 220°C (450°F) for 10 minutes. Reduce temperature to 180°C (350°F) and bake for a further 25-30 minutes.

ST.MARYS LIONS CLUB INC.

The Lions Club of St.Marys (Inc) held their change over dinner at Scamander Beach Resort Hotel on Saturday and it was attended by 55 Lions, Lions Ladies and guests, a presentation was made to Lion Graeme and Lions Lady Christine (Beswick) for their services to the Club over the past 7 years.

The outgoing President of the Club listed some of the activities for the past year, these included:

- Sold Lions Mints and Christmas Cakes
- Donated Christmas Cakes to Hospital & Meals on Wheels
- Hired Fairy Floss Machine
- Purchased Bunting for Town Decorations
- Began to Revamp Banners
- Organise Crockery Hire
- Collected, cut & rolled up used Conveyor Belting from Cornwall Coal
- Made Belting ready for sale, handled, loading and delivery
- Income from belting sales was used to provide donations and assist the less fortunate
- Provided Firewood for sick residents
- Presented bravery award to Glen McDonald
- Provide trip to Launceston for Elderly Citizens
- Cater for "Glen Coc" Ram Sale
- Decorate St.Marys streets for Christmas
- Father Christmas letters
- Assist with Carol by Candlelight
- Organise St.Marys Christmas Parade
- Elderly Citizens BBQ at Trout Rd Scamander
- Elderly Citizens trip to Beaconsfield
- Restoration of Recreation Hall
- "Clean Up" Australia Day, St.Marys to Scamander
- Sponsor Silver Threads Bowls Club Tournament
- St.Marys Swimming Pool DONATION
- Assist Local Tae Kwon Do Competition to National Titles (Paul Barnes)
- Laid Wreath on Anzac Day
- Lend out Lions Food Caravan to other Charities and Sporting Groups
- Man hours for the year over 507 and our Lions Ladies being closely involved in many activities

- Fitted Hand Rails for Elderly Citizen
- Donated to Primary School Football Carnival
- Donated towards Heart Start Machine
- Donated to Teenage Cancer Society
- Donated to Primary School Public Speaking Contest
- Donated towards St.Marys High School for Prizes
- Donated to Sight First
- Donated for St.Marys Christmas Party
- Donated to St.Giles
- Donated to Dr Phillip Cheung Appeal
- Donated to Camp Quality
- Donated to Graeme Milburn Cancer Ride
- Donated to Lions Landcare
- Donated to Lions Hearing Dogs
- Donated to Tas Wheelchair Sports Club
- Donated towards S.I.D.S. Monitor
- Donated to St.Marys Fire Victim
- Donated towards Childrens Goodwill Village (India)

President Jake thanked all for an enjoyable and successful year for the Lions Club of St.Marys.

ESK-DELORAIN ASSOCIATION

JULY 17th

Perth v Hagley
St. Marys v Westbury
Cressy v Campbell Town
Fingal v Mole Creek
Bracknell v Evandale

JULY 24th

Hagley v Fingal
Westbury v Perth
Bracknell v Cressy
Mole Creek v Evandale
St. Marys v Campbell Town

ST MARYS SWIMMING POOL ASSOCIATION INC

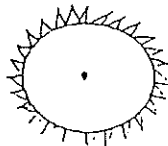
ANNUAL GENERAL MEETING
19 JULY 1993
7.30PM
SCHOOL HALL

MATHINNA SAWMILL

SCANTLING, RAILS, PALINGS
TIMBER CUT TO ORDER

CALL US

WE ARE: FREE DELIVERY AND
PROMPT SERVICE



STARDUST

CANCER June 22 - July 23

Financial surprises are in store. Follow your instincts in matters involving security. This is a time of great activity in your life. Lucky numbers; 15,21,26.

LEO July 24 - Aug 23

You may be surprised how well this week works out to your advantage. Push ahead with your goals. This is a good time to plan your future. Lucky numbers; 6,25,30.

VIRGO Aug 24 - Sept 23

Personal and employment matters head the list of your priorities in what should be an excellent week for getting things done. Lucky numbers; 9,16,22.

LIBRA Sept 24 - Oct 23

Entertainment, recreation, romance and money should see fortunate trends. Impatience must be avoided. You will soon face an important decision. Lucky numbers; 37,38,45.

SCORPIO Oct 24 - Nov 22

This week points to a change in love, perhaps caused by an error of judgment on your part. You have a chance to make major changes in your life. Lucky numbers; 31,36,41.

SAGITTARIUS Nov 23 - Dec 21

This may be an exceptional week for dealing with everyday business transactions, education and neighbourhood interests. A pleasant surprise in store. Lucky numbers; 3,20,39.

CAPRICORN Dec 22 - Jan 20

You may make many new friendships. Others may look to you as a person who can get things done. This should be a good week for planning or organisation. Lucky numbers; 11,17,43.

AQUARIUS Jan 21 - Feb 19

You should push ahead with all personal goals. This is a favourable time for travel. Opportunities should not be wasted. Lucky numbers; 5,28,33.

PISCES Feb 20 - Mar 20

Your ambitions should be pushed to the limits - many roads will be opened to you this week as you climb the ladder of success. Lucky numbers; 2,27,32.

ARIES Mar 21 - Apr 20

An interesting situation may develop concerning your social life. Good news is on the way. Look for those who will be a positive influence. Lucky numbers; 12,18,23.

TAURUS Apr 21 - May 21

Home and career interests feature strongly - mix a little business with pleasure for quick results. Family matters are important. Lucky numbers; 19,24,29.

GEMINI May 22 - June 21

This is a great week for group activities or just having a good time. Consider a new approach to your finances. Lucky numbers; 7,13,14.

MEALS ON WHEELS FINGAL VALLEY

JULY

Sunday	18
Monday	19
Tuesday	20
Wednesday	21
Thursday	22

ST. MARYS

Yvonne Saunders
P & Y Daveñ
Sandra Cook
George Oliver
Yvonne Salter

FINGAL

Janine Burt
Carol Woods
June Hall (Emer)
Roxie Cowie
Robyn Miller (Emer)

MATHINNA

Kaye Turner
Tom Baker
Max Ellis
Cynthia Webb
Christine Scott

JULY

Sunday	25
Monday	26
Tuesday	27
Wednesday	28
Thursday	29

ST. MARYS

Liz Guy
Lorraine Gill
D & S Robinson
Patsy Burgess (emer)
Rona Gatty

FINGAL

Les Rubenach
Christine Woods
Jack Miller
Jan Marshall
Yvonne Johnson

MATHINNA

Kaye Turner
Tom Baker
Max Ellis
Cynthia Webb
Christine Scott